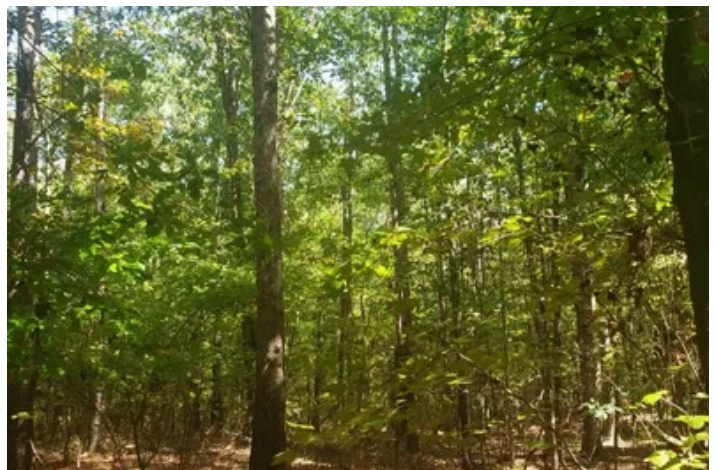


Gerald Tract
Bellfield Road
Ridgeway, SC 29130

\$249,600
32.36± Acres
Fairfield County



MORE INFO ONLINE:

<https://scacres.com/>

Gerald Tract
Ridgeway, SC / Fairfield County

SUMMARY

Address

Bellfield Road Park Road

City, State Zip

Ridgeway, SC 29130

County

Fairfield County

Type

Undeveloped Land, Hunting Land

Latitude / Longitude

34.314559 / -80.865535

Acreage

32.36

Price

\$249,600

Property Website

<https://scacres.com/property/gerald-tract/fairfield/south-carolina/91322/>



MORE INFO ONLINE:

<https://scacres.com/>

Gerald Tract
Ridgeway, SC / Fairfield County

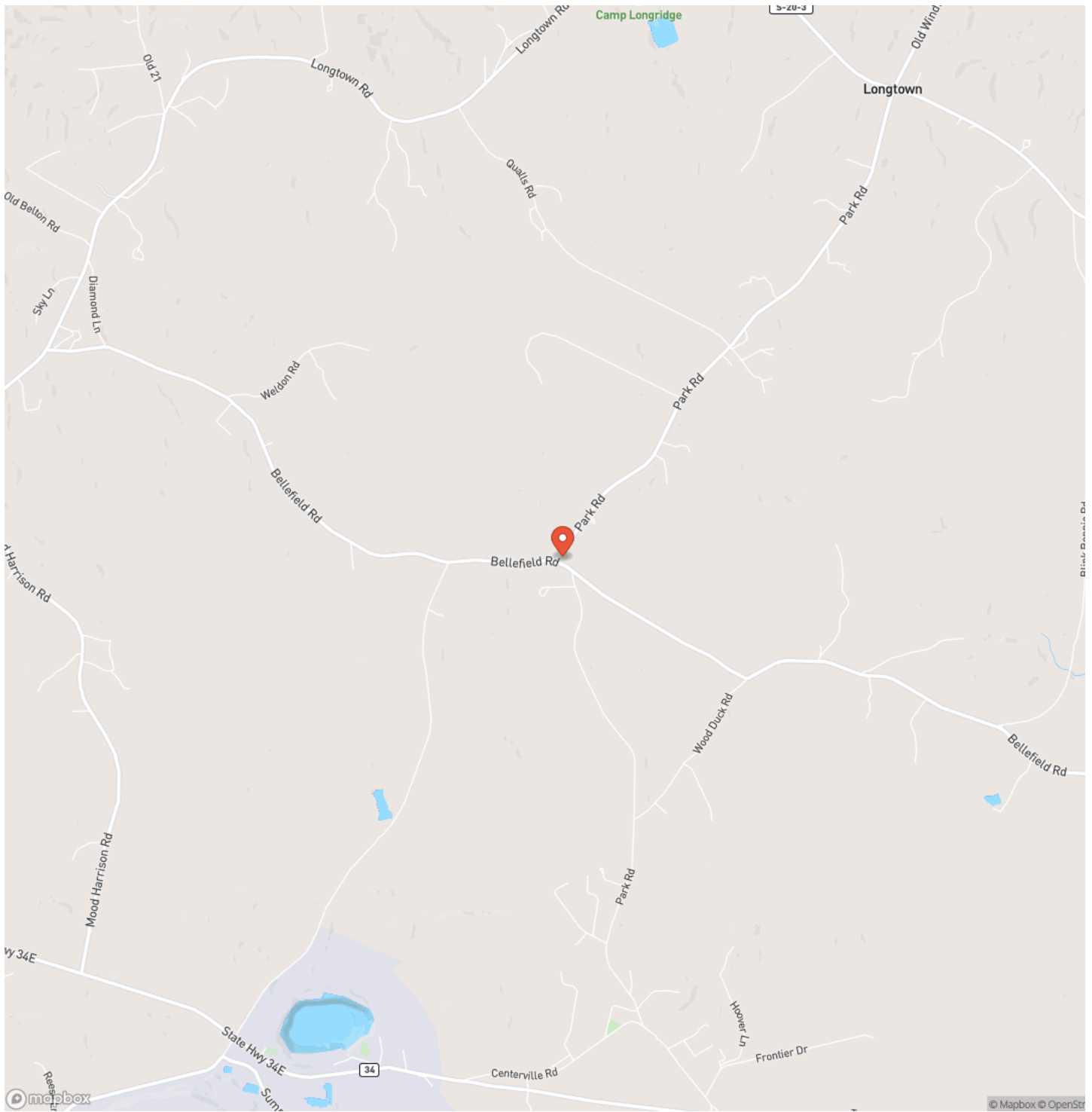
PROPERTY DESCRIPTION

The midland counties of South Carolina are seeing a dramatic increase in land sales and new residence growth, especially with the addition of the new Scout Motors facility and its parts providers located on Interstate 77 in northern Richland County. This 32+/- acre tract is in a great location to build your own private estate with a residence and/or to enjoy recreationally. It has approximately 1,400 feet of frontage along Park Road and 500 feet along Bellfield Road allowing easy access and available power to the property. It is covered with mature pine and scattered mature hardwoods providing beautiful homesite locations and great hunting opportunities. This rural area in Fairfield County offers quiet country living in a location with convenient travel to the historical town of Ridgeway in 10 minutes and to the larger cities of Camden and Columbia in 30 minutes. Property taxes in 2024 were \$62.82.

MORE INFO ONLINE:

<https://scacres.com/>

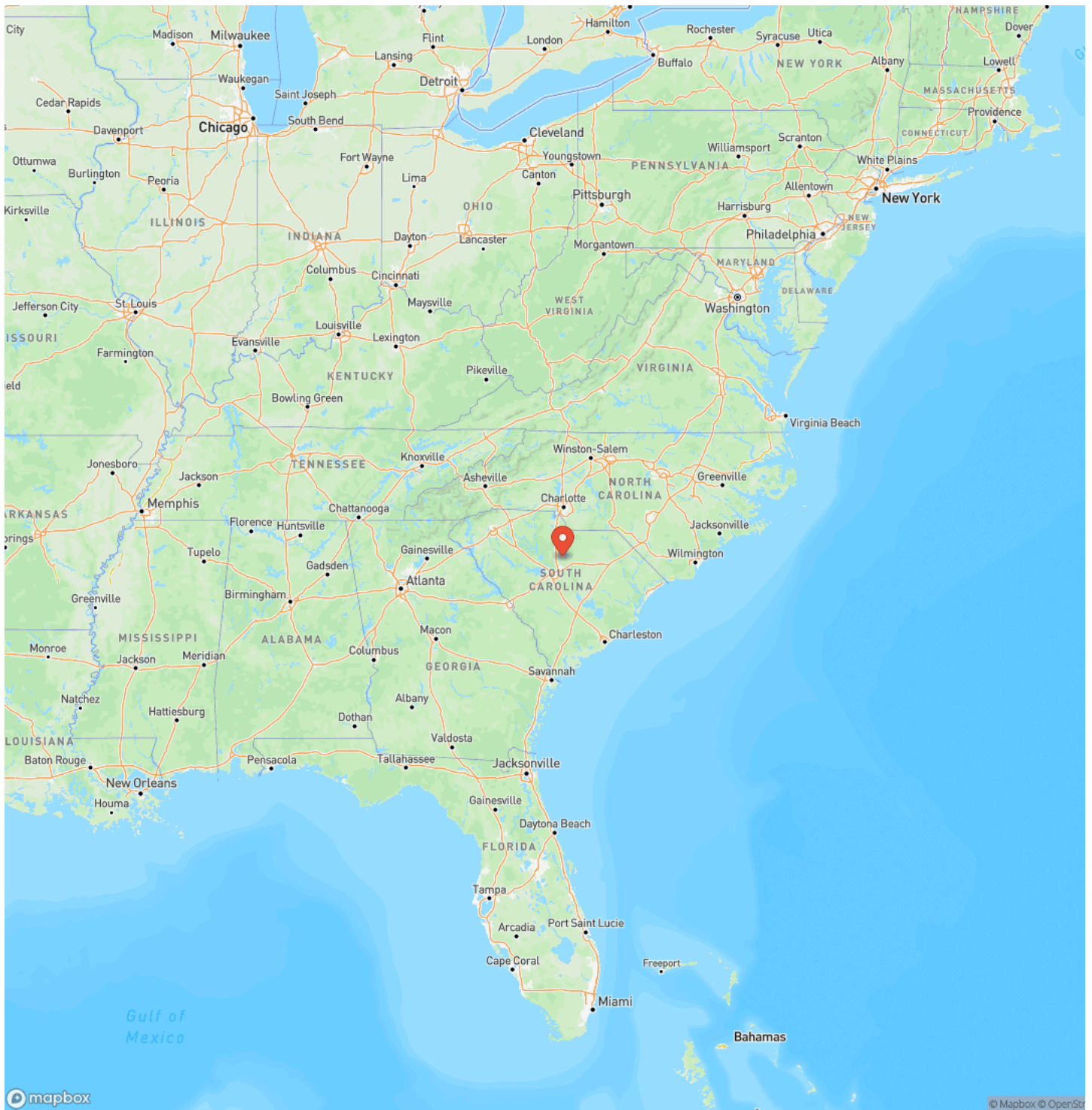
Locator Map



MORE INFO ONLINE:

<https://scacres.com/>

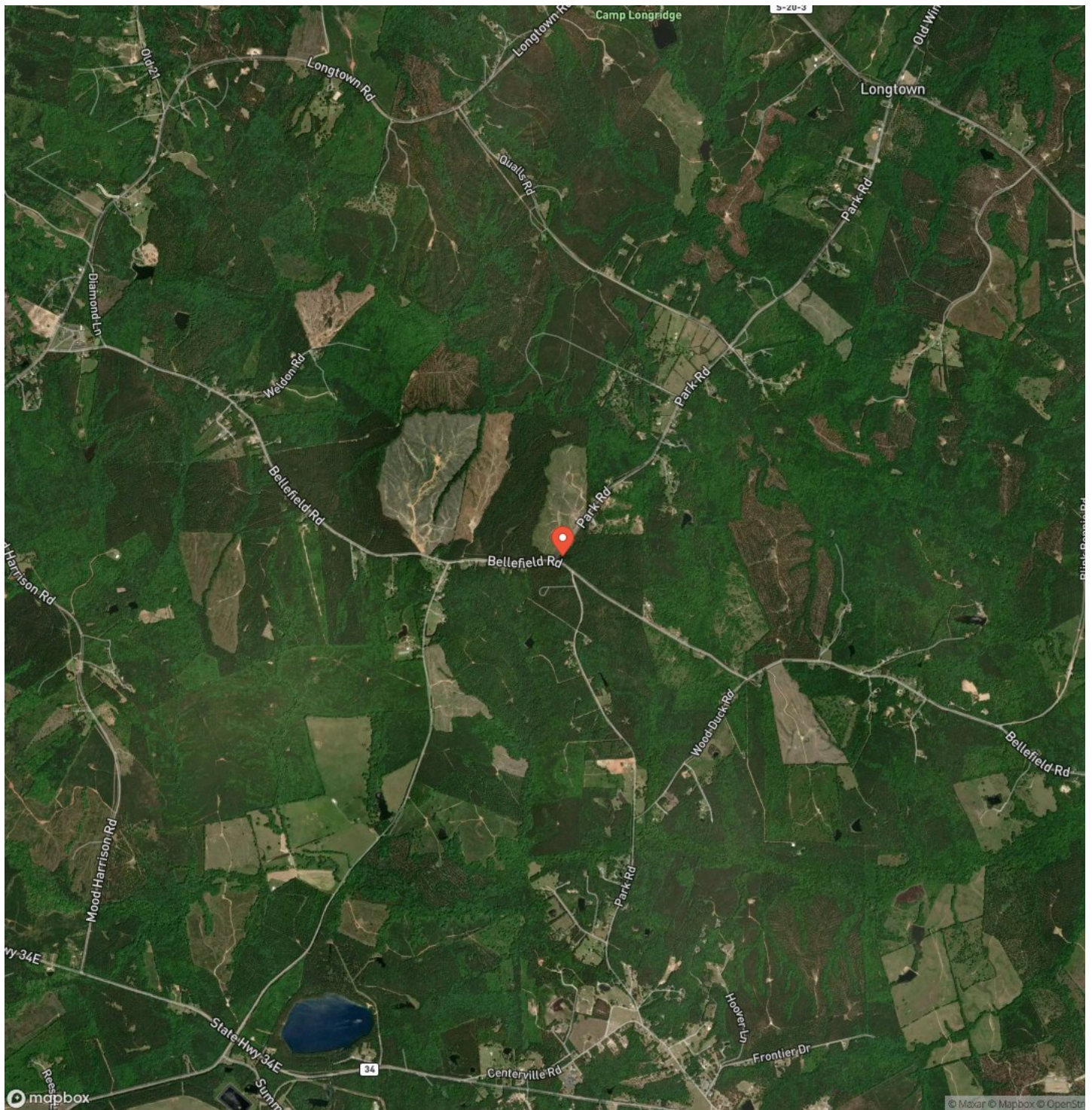
Locator Map



MORE INFO ONLINE:

<https://scacres.com/>

Satellite Map



MORE INFO ONLINE:

<https://scacres.com/>

DISCLAIMERS

Broker & Commission Disclosure: *Broker and Commission Disclosure: Commission splits will be at the sole discretion of Brown and Company. Buyer's Agents must be identified upon first contact with the Listing Firm and the Buyer's Agent must be present at the initial property tour to participate in the real estate commission. No land disclosure is available. Buyer or buyer's agent to verify any pertinent information before the completion of any inspection period.*

Brown & Company
485 US Hwy 321 Byp S
Winnsboro, SC 29180
(803) 337-7405
<https://scacres.com/>

MORE INFO ONLINE:

<https://scacres.com/>