

Bells Ferry Commercial Opportunity
Bells Ferry Road
Canton, GA 30114

\$750,000
2.5± Acres
Cherokee County



Bells Ferry Commercial Opportunity Canton, GA / Cherokee County

SUMMARY

Address

Bells Ferry Road

City, State Zip

Canton, GA 30114

County

Cherokee County

Type

Undeveloped Land, Commercial, Recreational Land

Latitude / Longitude

34.1802 / -84.5481

Acreage

2.5

Price

\$750,000

Property Website

<https://arrowheadlandcompany.com/property/bells-ferry-commercial-opportunity/cherokee/georgia/102333/>



Bells Ferry Commercial Opportunity Canton, GA / Cherokee County

PROPERTY DESCRIPTION

Opportunity and location meet with this 2.503 +/- acre commercial tract tucked just outside Lake Allatoona in one of Cherokee County's fastest-growing areas. Positioned on Bells Ferry Road near the intersection of Sixes Road and approximately 3 +/- miles from I-575, this property offers easy access, steady traffic, and a setting that feels connected and convenient. Located less than 15 +/- minutes from downtown Canton and Cherokee High School, it sits in an area where growth and community activity continue to come together. Situated just behind an established shopping center with popular retail and dining options, the site benefits from consistent nearby traffic while still offering privacy and flexibility for future development. Whether you're envisioning retail, office space, or a service-oriented business, this location offers strong potential in an already established area. With Lake Allatoona just minutes away and surrounding neighborhoods continuing to expand, this is more than just land; it's an opportunity to be part of a thriving and evolving community! All showings are by appointment only. If you would like more information or would like to schedule a private viewing please contact Cal Hardie at [\(770\) 296-2163](tel:7702962163).

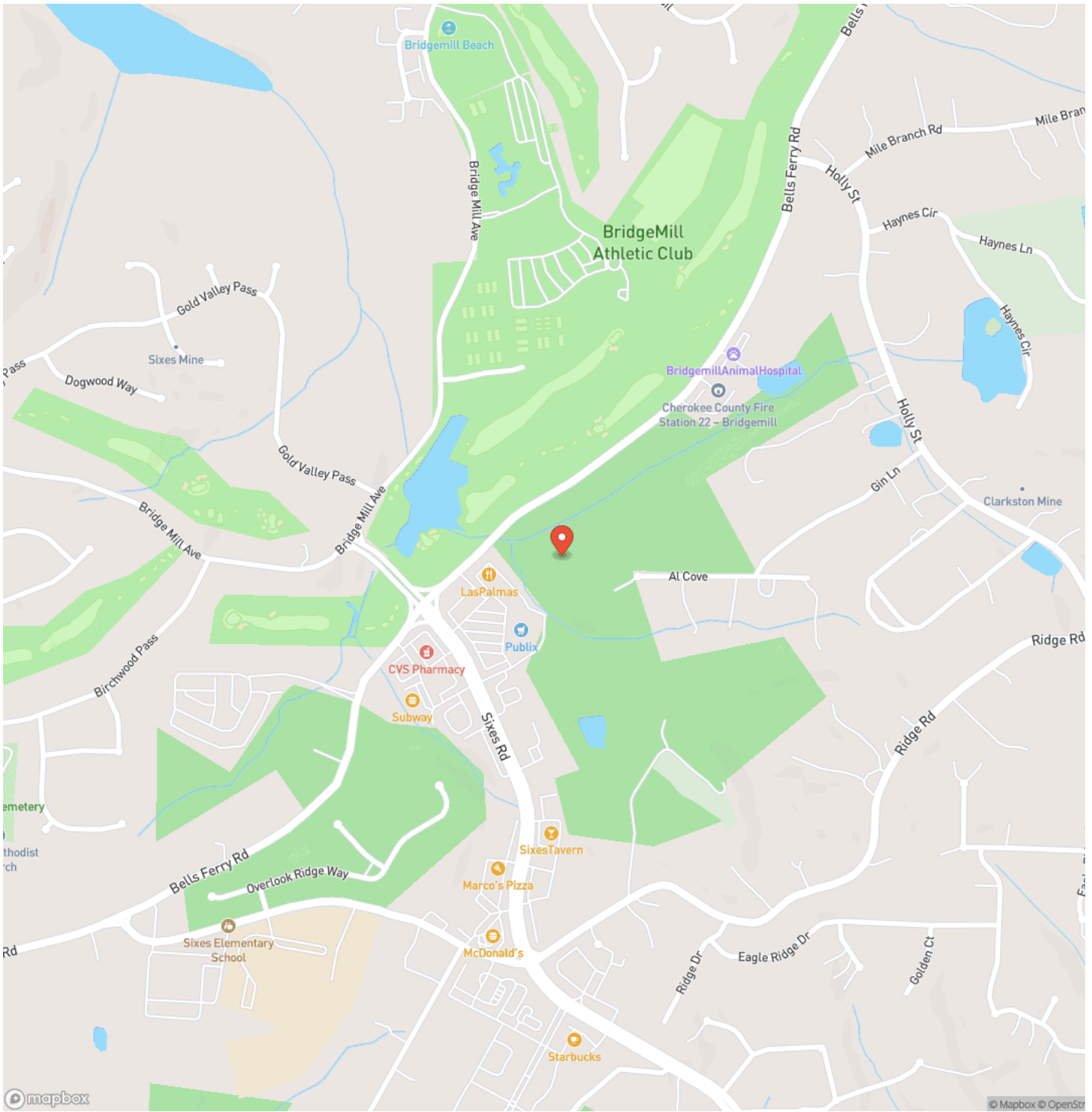
Disclaimer: The boundary lines shown are approximate and are provided for general reference only. Arrowhead Land Company makes no representations or warranties, express or implied, as to the accuracy, completeness, or reliability of those property lines. Buyers are advised to obtain an independent survey to verify exact property boundaries.



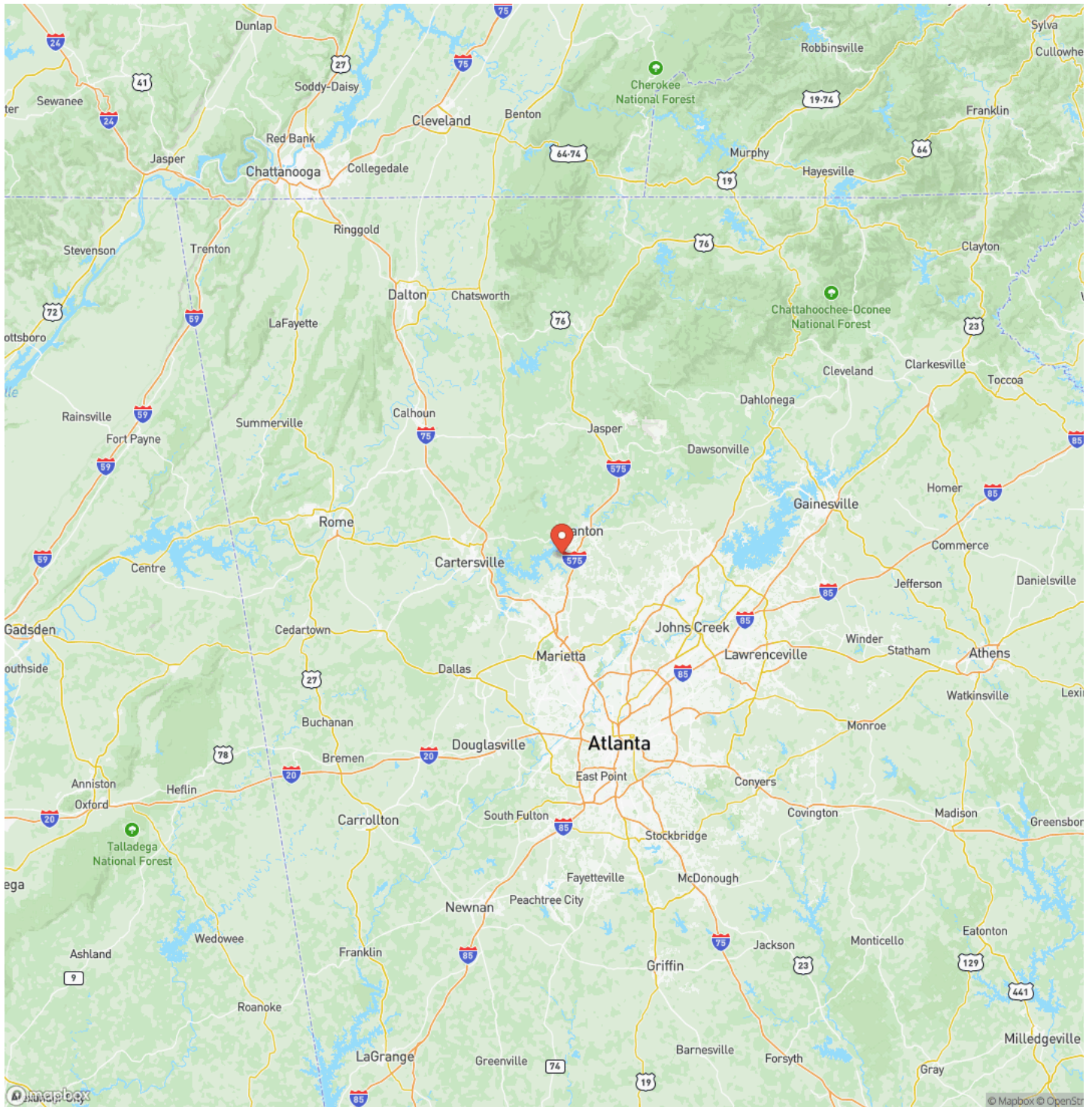
Bells Ferry Commercial Opportunity
Canton, GA / Cherokee County



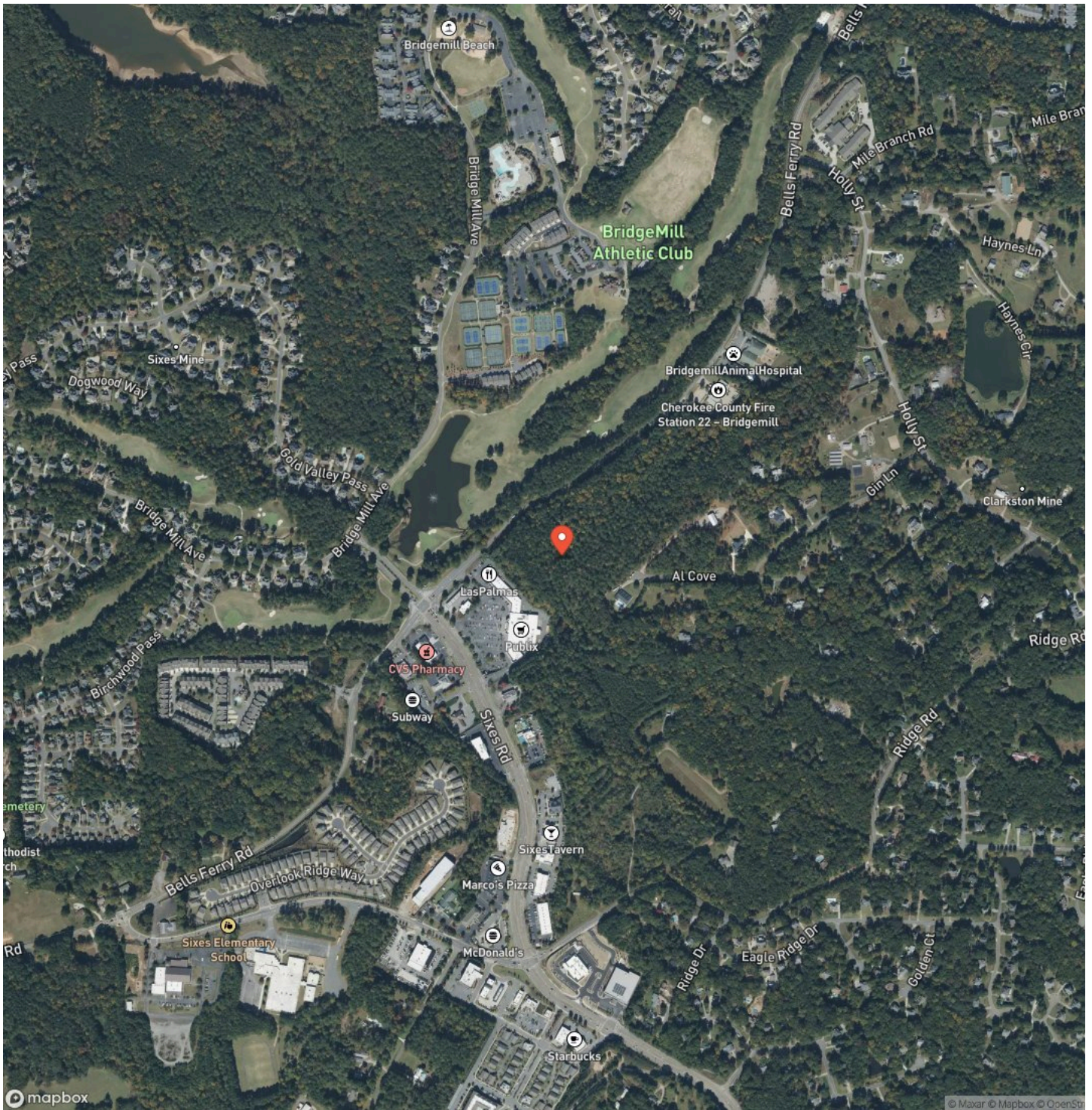
Locator Map



Locator Map



Satellite Map



DISCLAIMERS

Information in this brochure is provided solely for information purposes and does not constitute an offer to sell or advertise real estate outside the states in which broker or agent licensed. The information presented has been obtained from sources deemed to be reliable, but is not guaranteed or warranted by the agent, broker, or the sellers of these properties. This offering is subject to errors, omissions, prior sale, price change, correction or withdrawal from the market without notice. All references to age, square footage, income, expenses, acreage, carrying capacity, and land classification, etc. are approximate. Prospective buyers are chargeable with and expected to conduct their own independent investigation of the information and the property and to rely only on those results. Sellers reserve the right to accept or reject any and all offers without liability to any buyer or cooperating broker.

Maps are provided for illustration purposes only, the accuracy is not warranted. Parcels on interactive maps are not adjusted to match aerial backgrounds. This information is for reference purposes only and is not a legal document. Data maps contain errors. The seller and seller's agent are making known to all potential buyers that there may be variations between the location of the existing fence lines and the legal description of the deeded property. Seller and seller's agent make no warranties with regard to the location of the fence lines in relationship to the deeded property lines, nor does the Seller make any warranties or representations with regard to the specific acreage contained within the fenced property lines. Seller is selling the property in an "as is" condition, which includes the location of the fences as they exist. Boundaries shown on the accompanying maps are approximate, based on county parcel data. The maps are not to scale. The accuracy of the maps is not guaranteed. Prospective buyers are encouraged to verify fence lines, deeded property lines and acreages using a licensed surveyor at their own expense.

Arrowhead Land Company
205 E Dewey Ave
Sapulpa, OK 74066
(833) 873-2452
<https://arrowheadlandcompany.com/>

