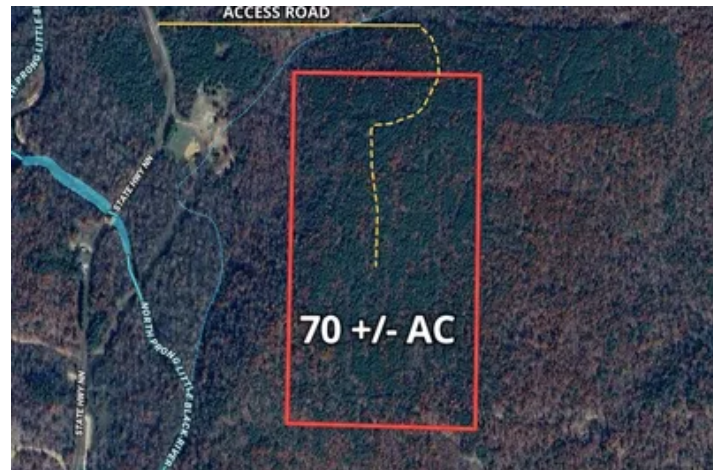


Beautiful 70 +/- Acre Getaway Near Grandin, Missouri  
000 NN Highway  
Grandin, MO 63943

**\$189,900**  
69.200± Acres  
Ripley County





## Beautiful 70 +/- Acre Getaway Near Grandin, Missouri Grandin, MO / Ripley County

---

### **SUMMARY**

#### **Address**

000 NN Highway

#### **City, State Zip**

Grandin, MO 63943

#### **County**

Ripley County

#### **Type**

Hunting Land, Business Opportunity, Recreational Land, Farms, Ranches

#### **Latitude / Longitude**

36.829221 / -90.822901

#### **Acreage**

69.200

#### **Price**

\$189,900

#### **Property Website**

<https://www.mossyoakproperties.com/property/beautiful-70-acre-getaway-near-grandin-missouri-ripley-missouri/86936/>



## Beautiful 70 +/- Acre Getaway Near Grandin, Missouri

### Grandin, MO / Ripley County

---

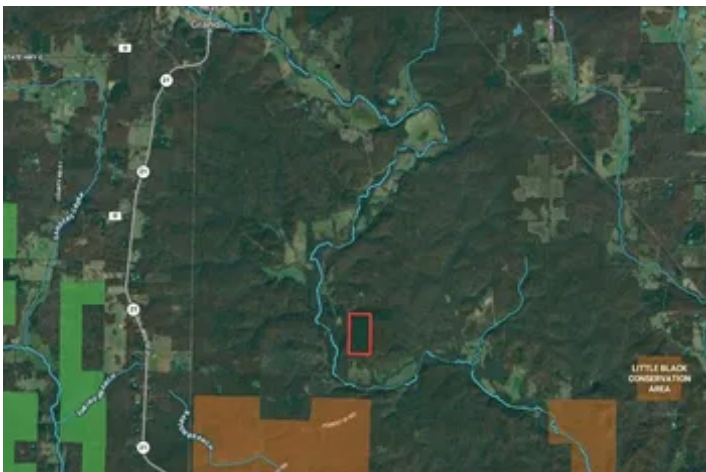
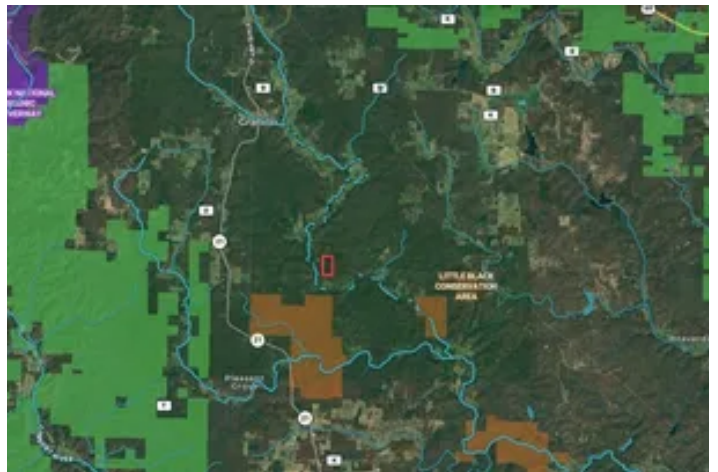
#### **PROPERTY DESCRIPTION**

Beautiful 70 +/- Acre Getaway Near Grandin, Missouri

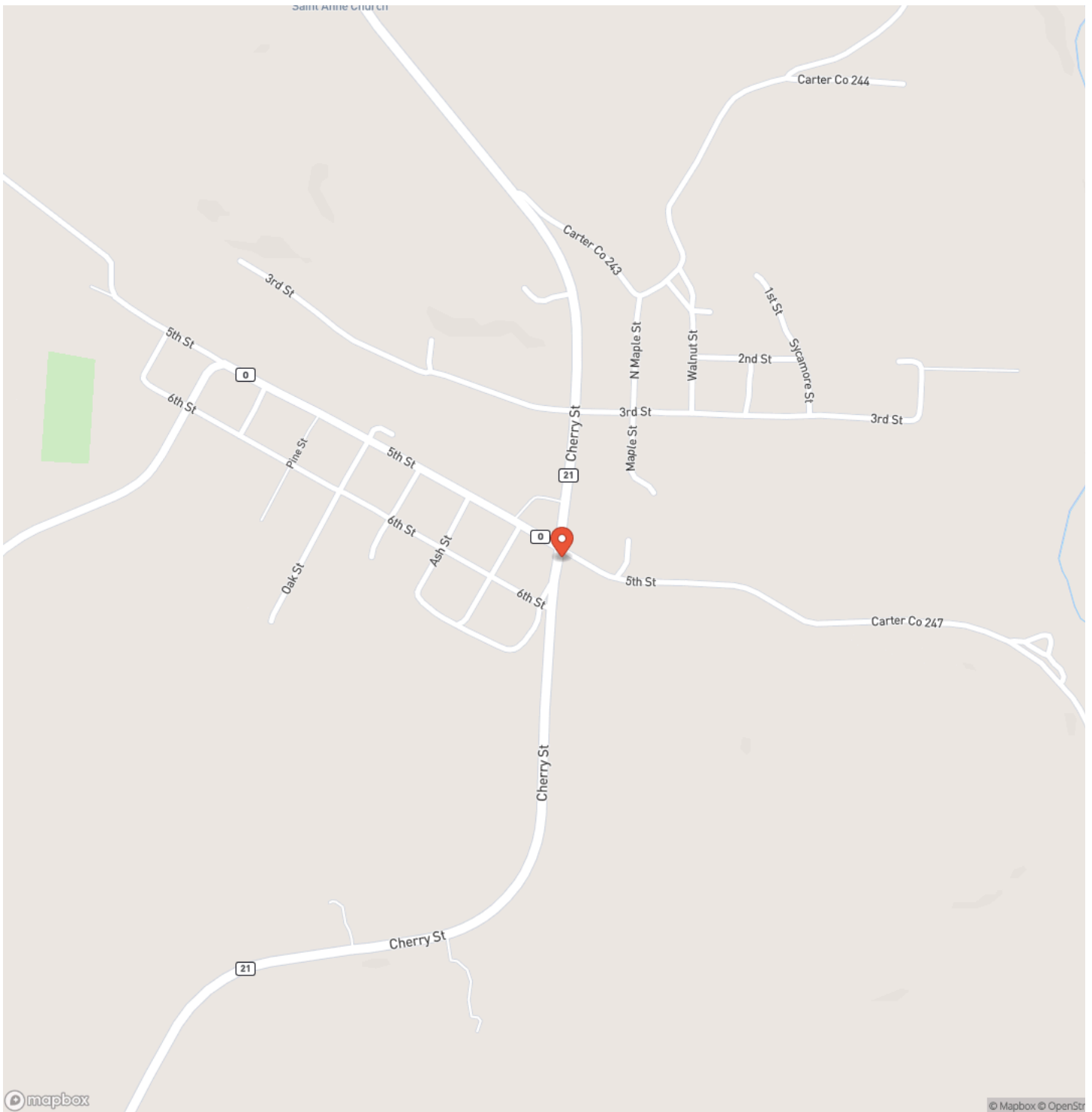
Located just off Highway NN, this 70-acre parcel offers great recreational opportunities and is in an incredibly private location. A new road is being added for improved access, and there is a flat-central ridge system running through the property. This ridge system would be an excellent location for a series of food plots, or one large food plot. Additionally, this piece is just minutes from thousands of acres of public land and a few miles from the scenic Current River. If you're looking for a private retreat with tons of recreational possibilities, don't wait! Contact Landon Carlton or David Nance with Mossy Oak Properties Mozark Realty.



Beautiful 70 +/- Acre Getaway Near Grandin, Missouri  
Grandin, MO / Ripley County

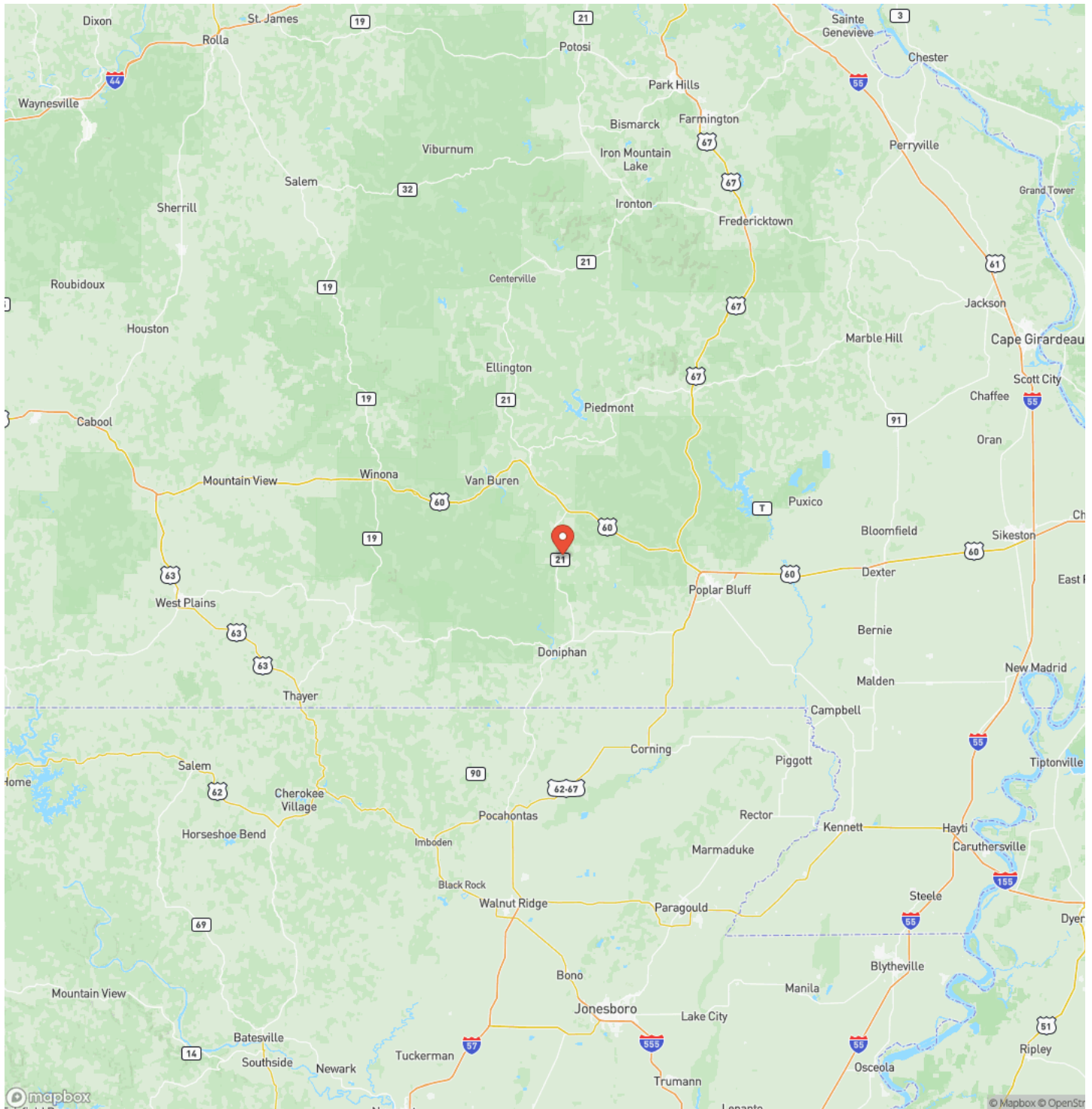


## Locator Map



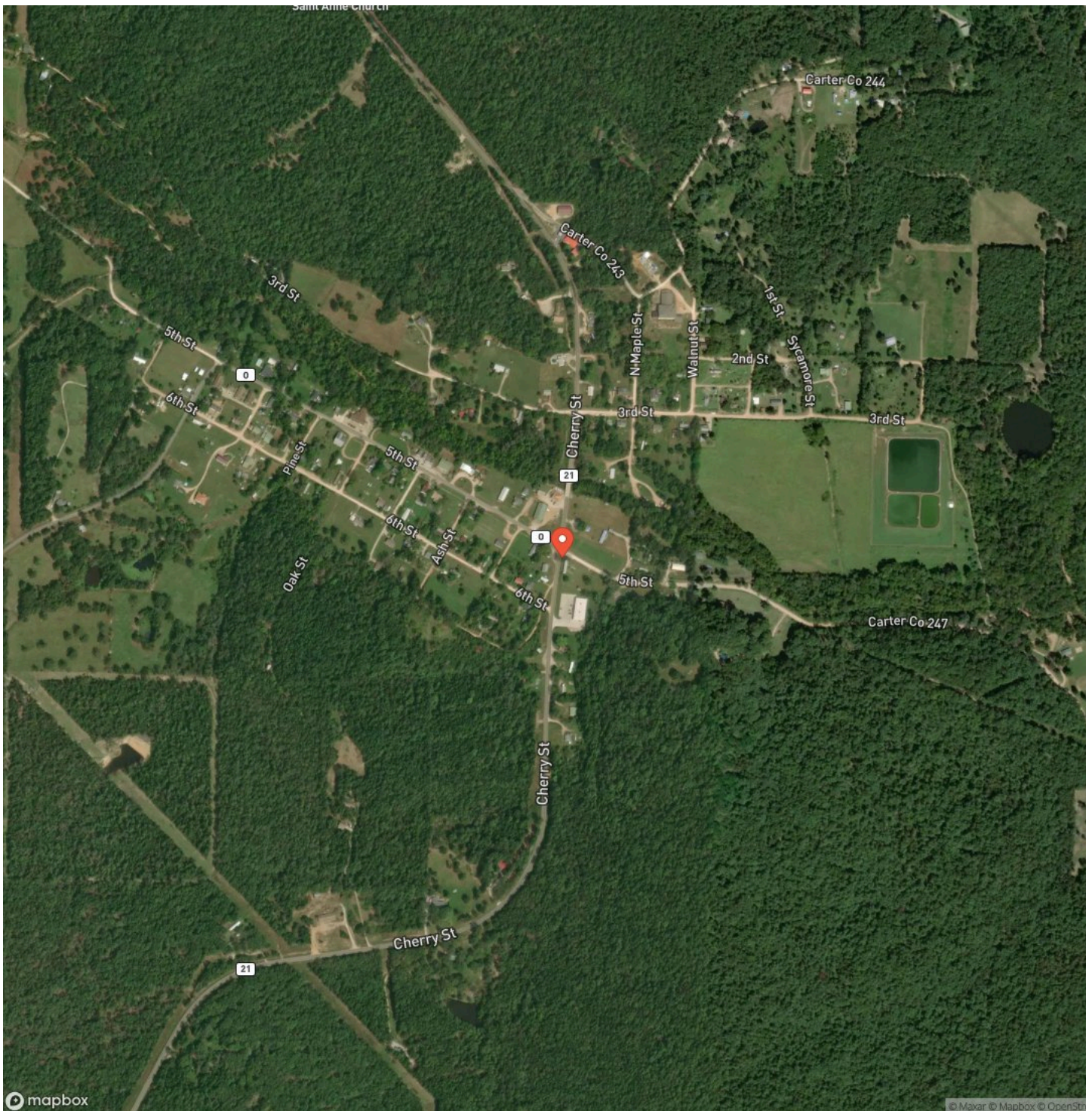
## Grandin, MO / Ripley County

## Locator Map





## Satellite Map



## Beautiful 70 +/- Acre Getaway Near Grandin, Missouri

## LISTING REPRESENTATIVE

**For more information contact:**



### Representative

Landon Carlton

## Mobile

(573) 225-2907

## Office

(573) 225-2907

## Email

lcarlton@mossyoakproperties.com

## Address

## City / State / Zip

## NOTES

[illegible]



## This image shows a single sheet of white paper with horizontal ruling lines. The lines are evenly spaced and run across the width of the page. There are no margins, text, or other markings on the paper.



**MORE INFO ONLINE:**  
**MossyOakProperties.com**

## **DISCLAIMERS**

Information in this brochure is provided solely for information purposes and does not constitute an offer to sell or advertise real estate outside the states in which broker or agent licensed. The information presented has been obtained from sources deemed to be reliable, but is not guaranteed or warranted by the agent, broker, or the sellers of these properties. This offering is subject to errors, omissions, prior sale, price change, correction or withdrawal from the market without notice. All references to age, square footage, income, expenses, acreage, carrying capacity, and land classification, etc. are approximate. Prospective buyers are chargeable with and expected to conduct their own independent investigation of the information and the property and to rely only on those results. Sellers reserve the right to accept or reject any and all offers without liability to any buyer or cooperating broker.

Maps are provided for illustration purposes only, the accuracy is not warranted. Parcels on interactive maps are not adjusted to match aerial backgrounds. This information is for reference purposes only and is not a legal document. Data maps contain errors. The seller and seller's agent are making known to all potential buyers that there may be variations between the location of the existing fence lines and the legal description of the deeded property. Seller and seller's agent make no warranties with regard to the location of the fence lines in relationship to the deeded property lines, nor does the Seller make any warranties or representations with regard to the specific acreage contained within the fenced property lines. Seller is selling the property in an "as is" condition, which includes the location of the fences as they exist. Boundaries shown on the accompanying maps are approximate, based on county parcel data. The maps are not to scale. The accuracy of the maps is not guaranteed. Prospective buyers are encouraged to verify fence lines, deeded property lines and acreages using a licensed surveyor at their own expense.



---

**Mossy Oak Properties Mozark Realty**  
947 N. Westwood Blvd.  
Poplar Bluff, MO 63901  
(573) 712-2252  
[MossyOakProperties.com](http://MossyOakProperties.com)

---