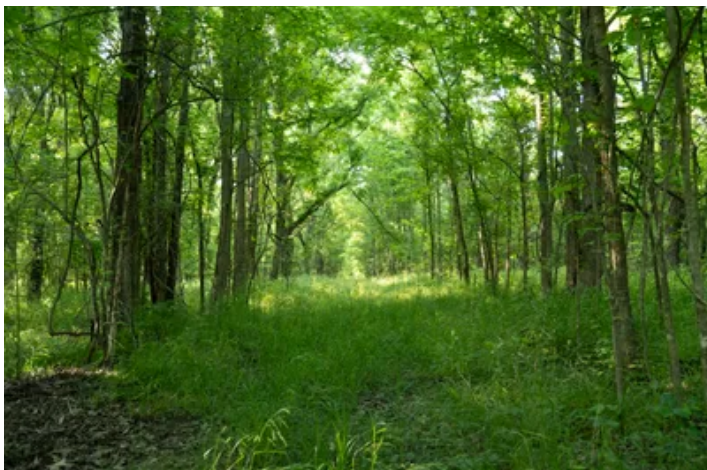


Prime 24± Acre Tract Just Minutes from Bloomfield, MO  
000 State Highway BB  
Bloomfield, MO 63825

**\$136,800**  
24± Acres  
Stoddard County



**Prime 24± Acre Tract Just Minutes from Bloomfield, MO**  
**Bloomfield, MO / Stoddard County**

---

**SUMMARY**

**Address**

000 State Highway BB

**City, State Zip**

Bloomfield, MO 63825

**County**

Stoddard County

**Type**

Farms, Business Opportunity, Recreational Land, Hunting Land

**Latitude / Longitude**

36.987309 / -89.960115

**Acreage**

24

**Price**

\$136,800

**Property Website**

<https://www.mossyoakproperties.com/property/prime-24-acre-tract-just-minutes-from-bloomfield-mo-stoddard-missouri/82054/>



## **Prime 24± Acre Tract Just Minutes from Bloomfield, MO**

### **Bloomfield, MO / Stoddard County**

---

#### **PROPERTY DESCRIPTION**

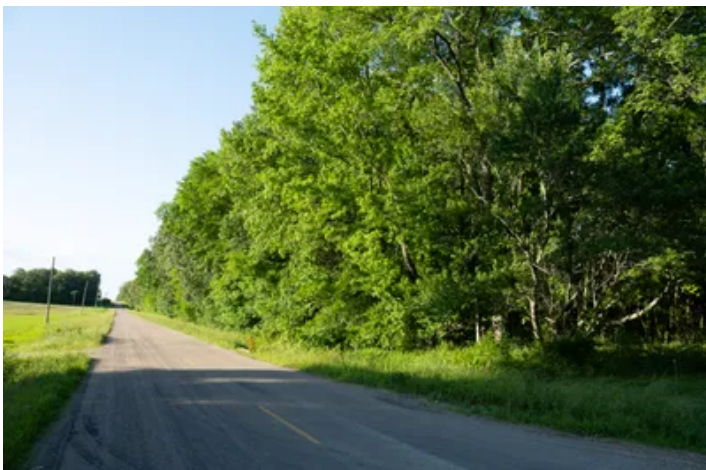
Prime 24± Acre Tract Just Minutes from Bloomfield, MO!

This versatile 24± acre property is ideally situated just outside Bloomfield, offering an exceptional opportunity for development, recreation, or a private retreat. Boasting over 1,200 feet of highway frontage and more than 700 feet of additional frontage along a county road on its southern boundary, this tract offers outstanding access and visibility.

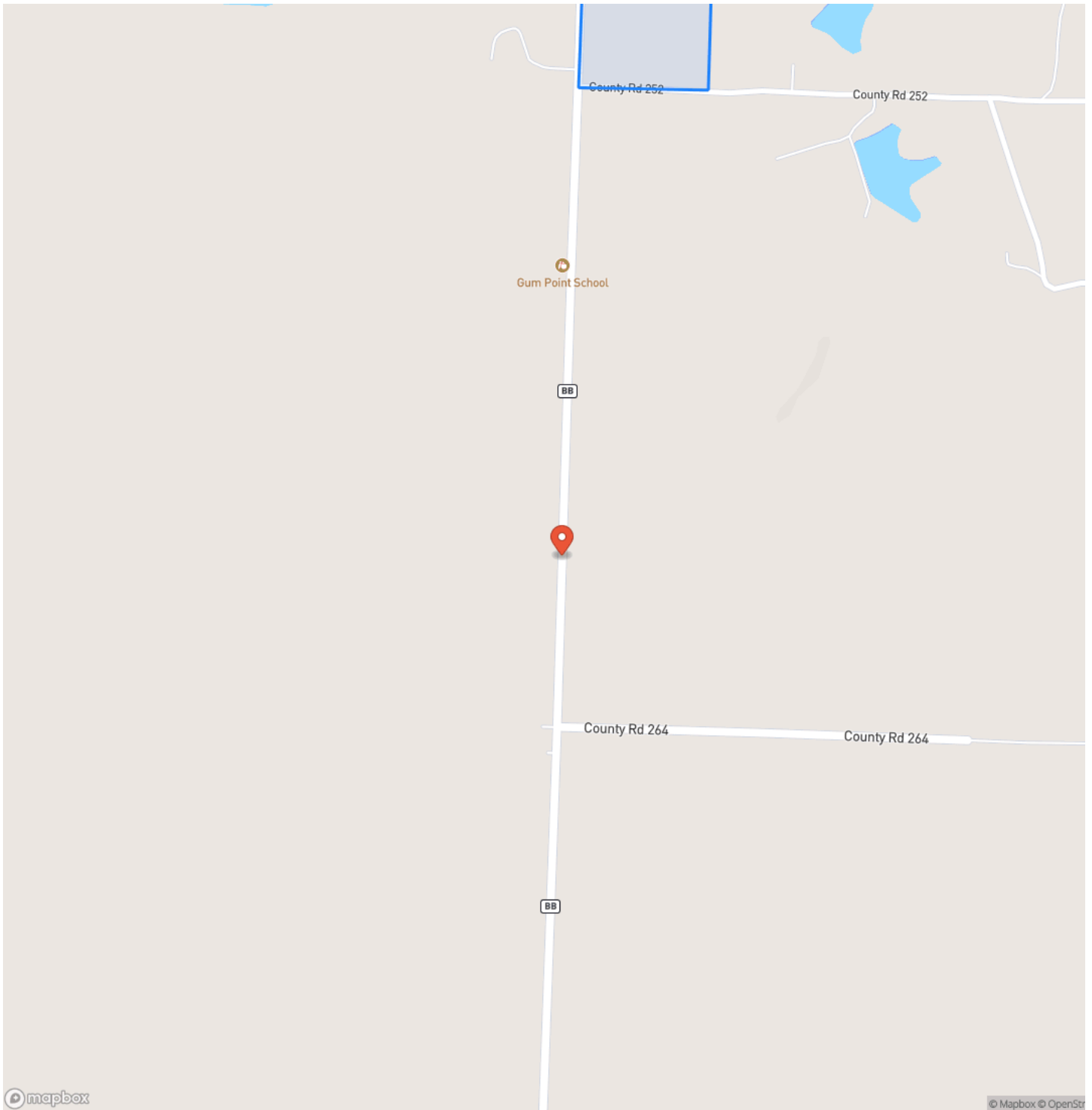
This parcel features gently rolling terrain, making it suitable for a wide range of uses. A well-maintained trail system winds throughout the property, enhancing accessibility and recreational appeal. Additionally, deer and turkey hunting opportunities are available on-site.

Properties in this desirable area rarely come on the market - don't miss your chance to invest in this prime piece of Stoddard County ground!

Prime 24± Acre Tract Just Minutes from Bloomfield, MO  
Bloomfield, MO / Stoddard County

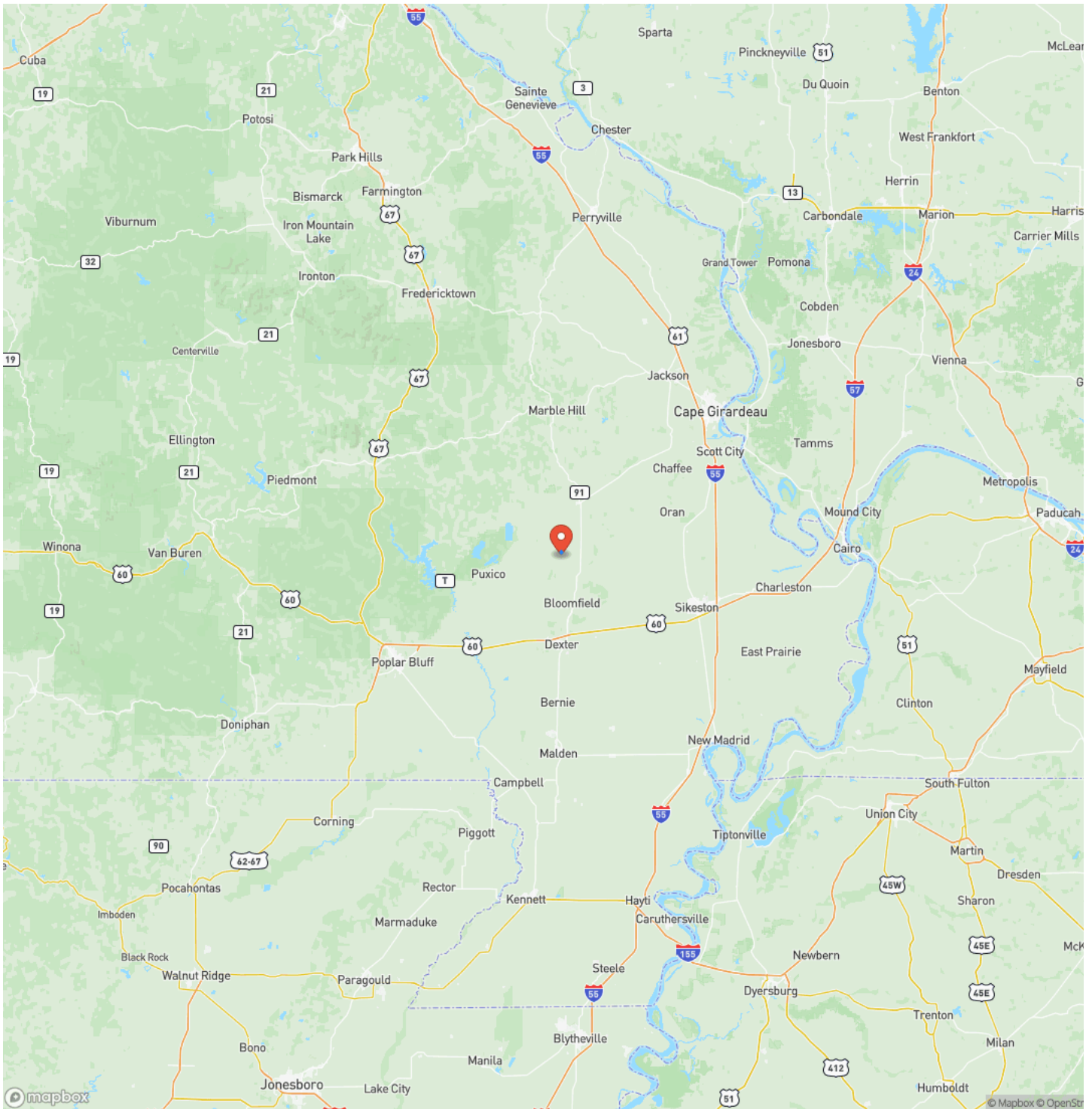


## Locator Map



## Prime 24± Acre Tract Just Minutes from Bloomfield, MO Bloomfield, MO / Stoddard County

## Locator Map

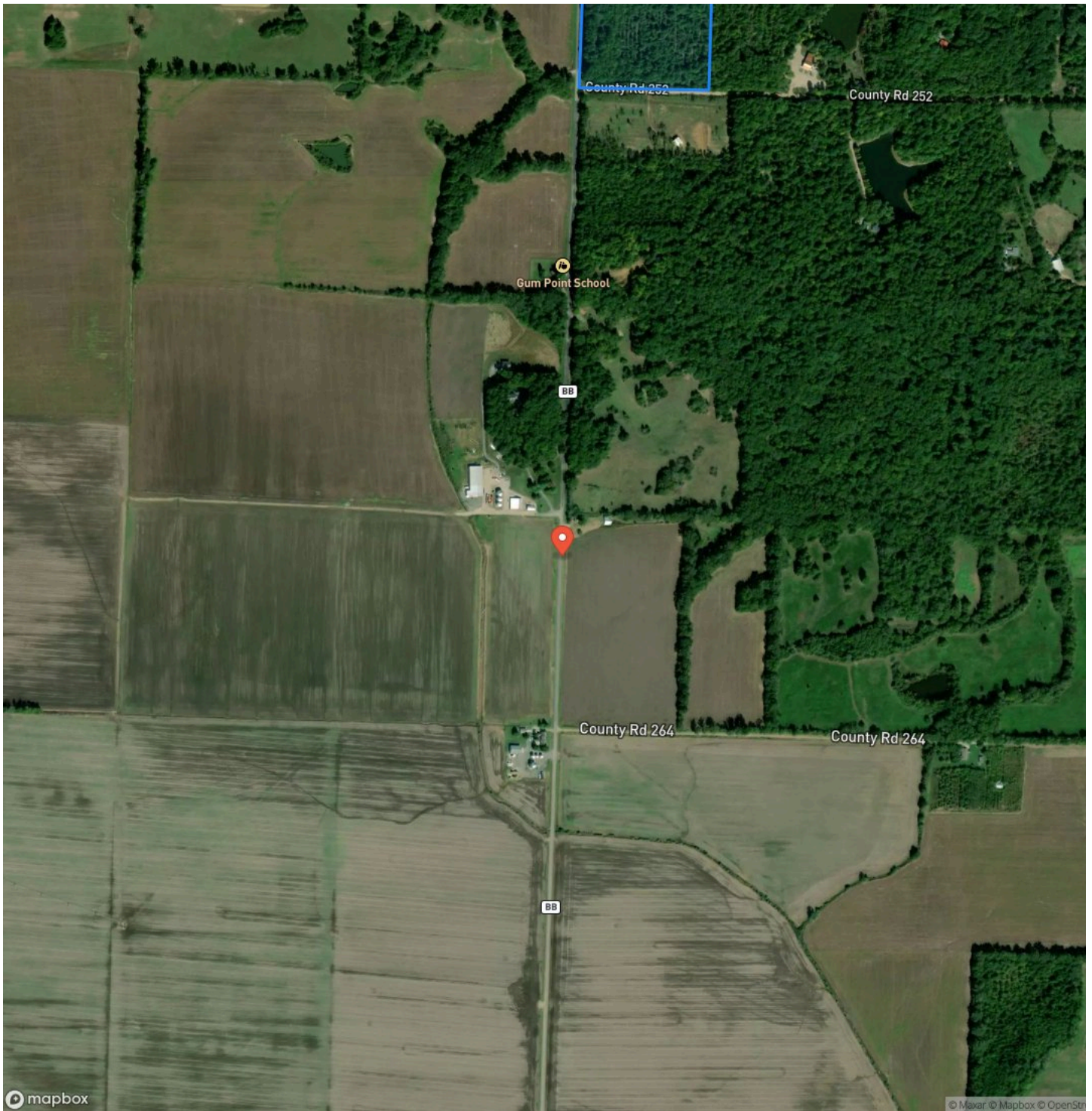


**MORE INFO ONLINE:**

**MossyOakProperties.com**

Prime 24± Acre Tract Just Minutes from Bloomfield, MO  
Bloomfield, MO / Stoddard County

## Satellite Map



## Prime 24± Acre Tract Just Minutes from Bloomfield, MO

### Bloomfield, MO / Stoddard County

## LISTING REPRESENTATIVE

**For more information contact:**



### Representative

Landon Carlton

## Mobile

(573) 225-2907

## Office

(573) 225-2907

## Email

lcarlton@mossyoakproperties.com

## Address

## City / State / Zip

## NOTES

[illegible]

## NOTES

This image shows a full page of blank white paper with horizontal ruling lines. The lines are evenly spaced and run across the width of the page, providing a template for writing or drawing. There are no margins, text, or other markings present.

## **DISCLAIMERS**

Information in this brochure is provided solely for information purposes and does not constitute an offer to sell or advertise real estate outside the states in which broker or agent licensed. The information presented has been obtained from sources deemed to be reliable, but is not guaranteed or warranted by the agent, broker, or the sellers of these properties. This offering is subject to errors, omissions, prior sale, price change, correction or withdrawal from the market without notice. All references to age, square footage, income, expenses, acreage, carrying capacity, and land classification, etc. are approximate. Prospective buyers are chargeable with and expected to conduct their own independent investigation of the information and the property and to rely only on those results. Sellers reserve the right to accept or reject any and all offers without liability to any buyer or cooperating broker.

Maps are provided for illustration purposes only, the accuracy is not warranted. Parcels on interactive maps are not adjusted to match aerial backgrounds. This information is for reference purposes only and is not a legal document. Data maps contain errors. The seller and seller's agent are making known to all potential buyers that there may be variations between the location of the existing fence lines and the legal description of the deeded property. Seller and seller's agent make no warranties with regard to the location of the fence lines in relationship to the deeded property lines, nor does the Seller make any warranties or representations with regard to the specific acreage contained within the fenced property lines. Seller is selling the property in an "as is" condition, which includes the location of the fences as they exist. Boundaries shown on the accompanying maps are approximate, based on county parcel data. The maps are not to scale. The accuracy of the maps is not guaranteed. Prospective buyers are encouraged to verify fence lines, deeded property lines and acreages using a licensed surveyor at their own expense.

---

**Mossy Oak Properties Mozark Realty**  
947 N. Westwood Blvd.  
Poplar Bluff, MO 63901  
(573) 712-2252  
[MossyOakProperties.com](http://MossyOakProperties.com)

---