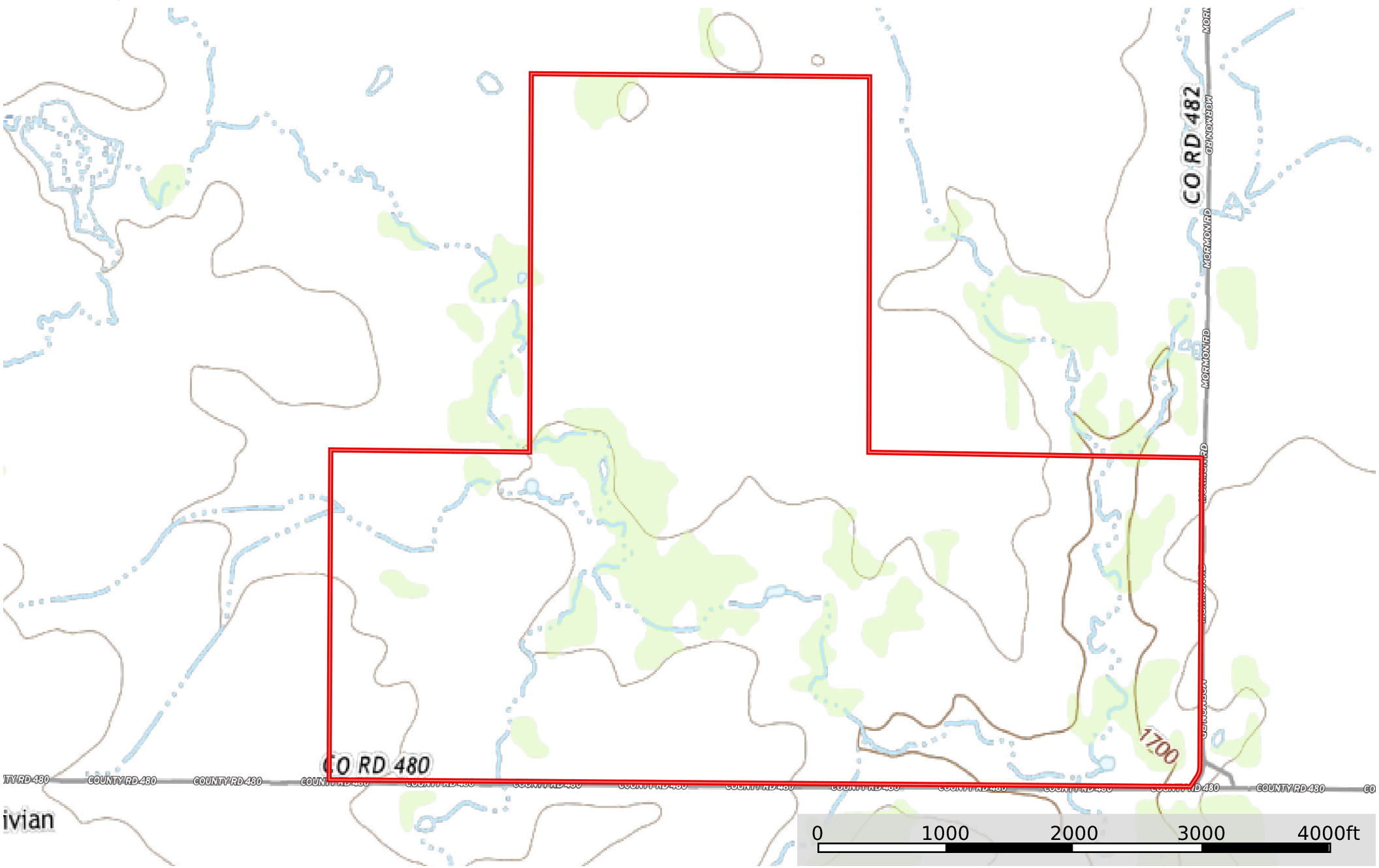


- Well
- House
- Blind
- Feeder
- Pens
- Shop
- Gate
- Fence
- Road / Trail
- Primary Road
- Circle MC Ranch

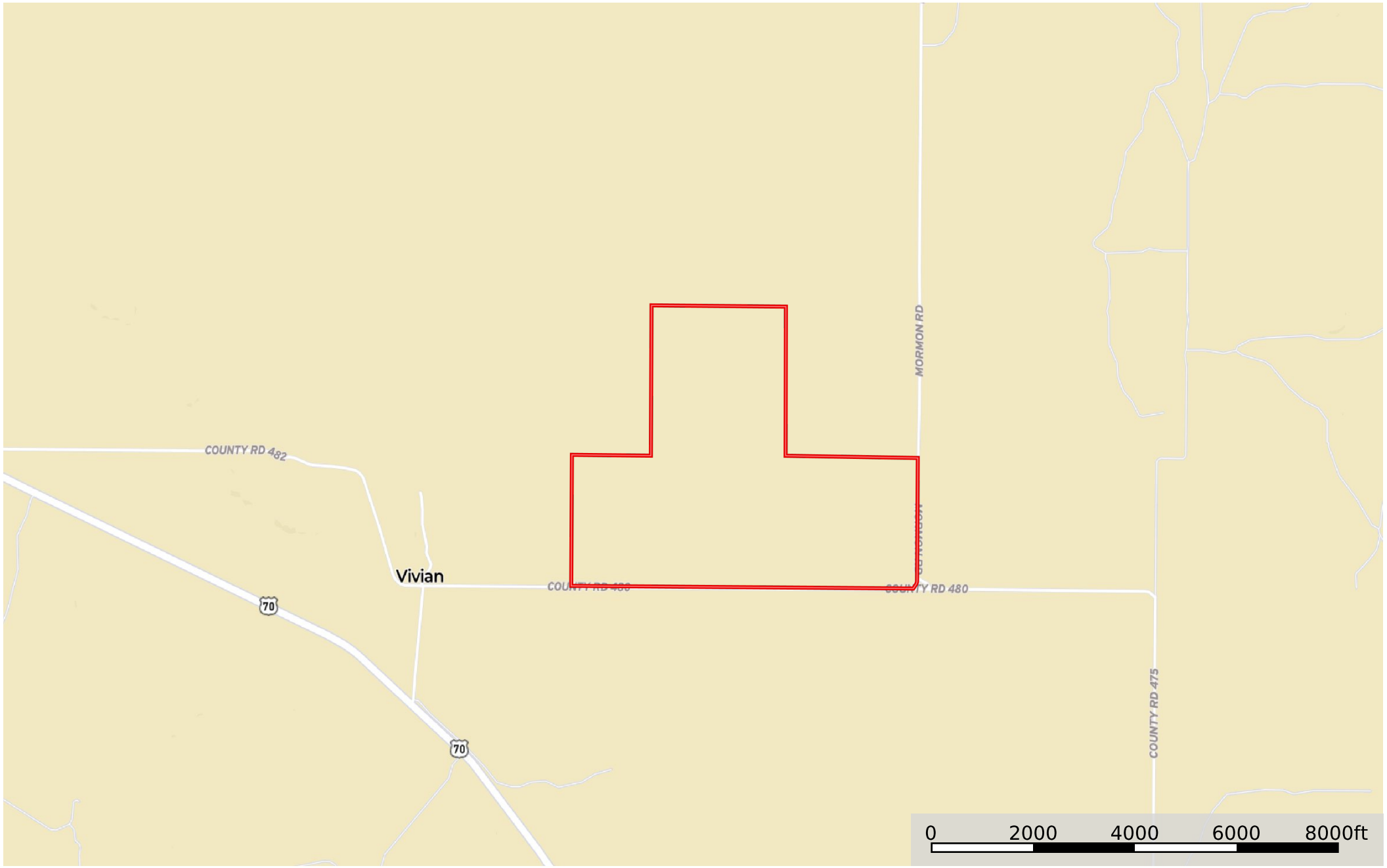
Circle MC Ranch

Foard County, Texas, 530 AC +/-



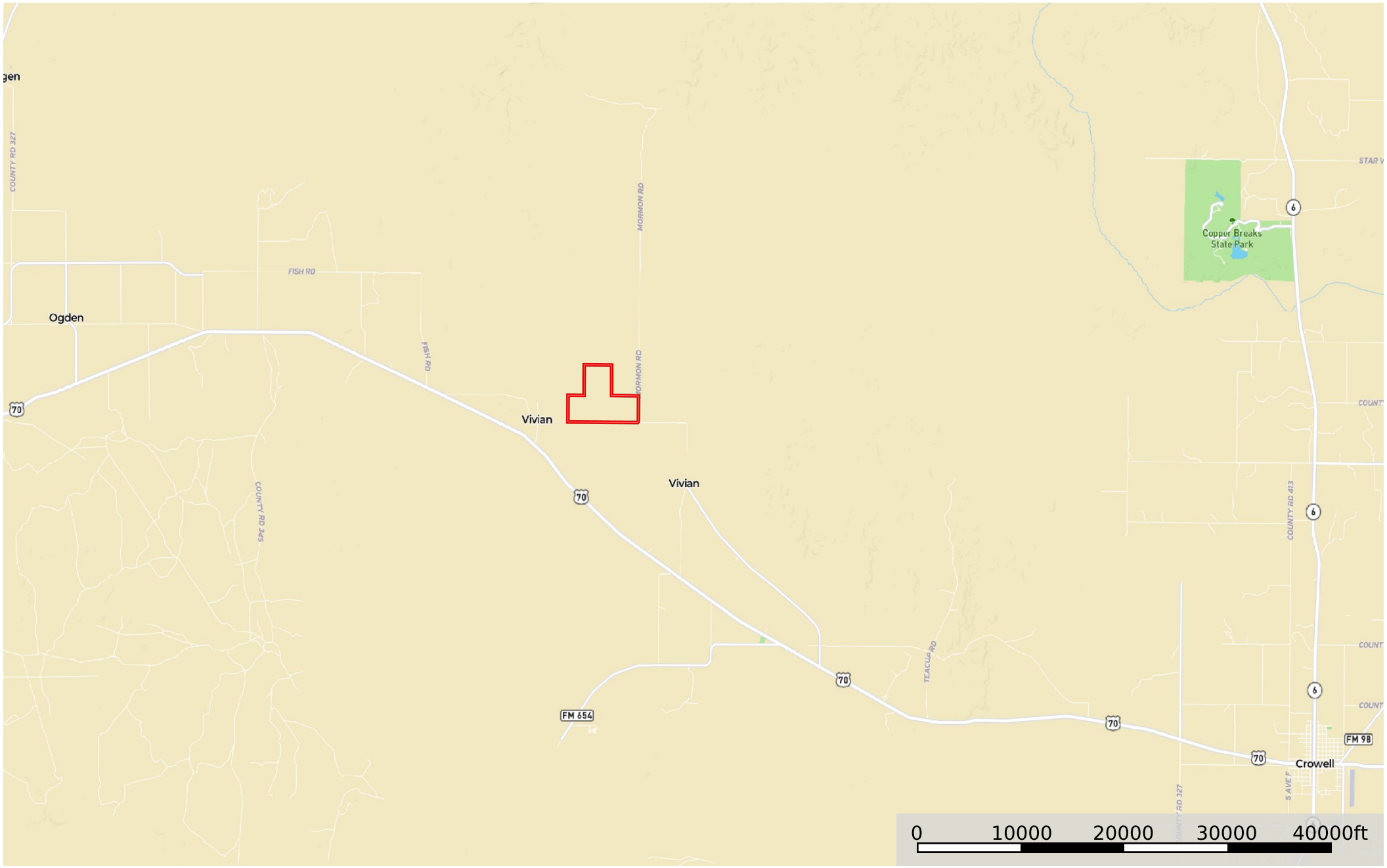
ivian

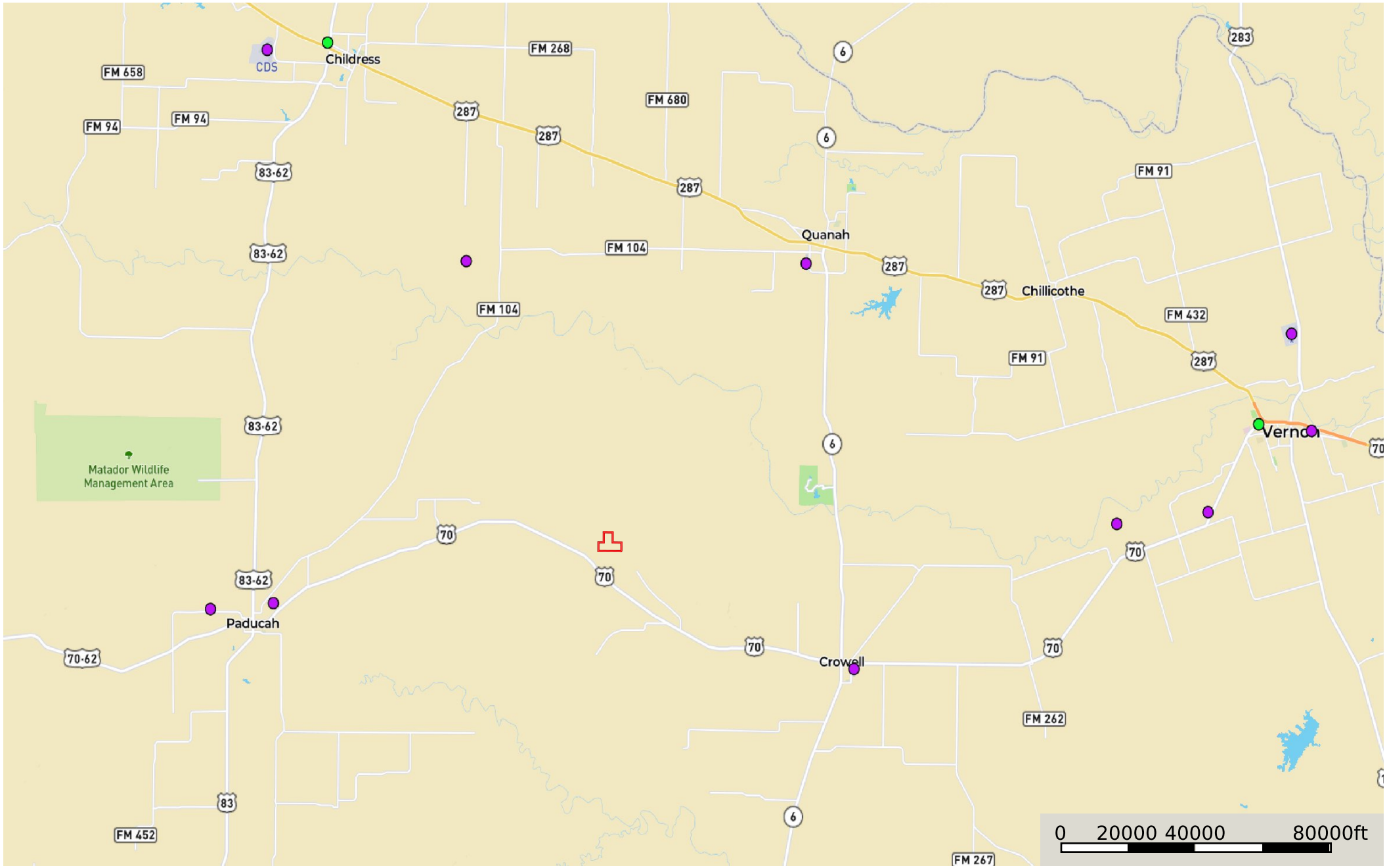




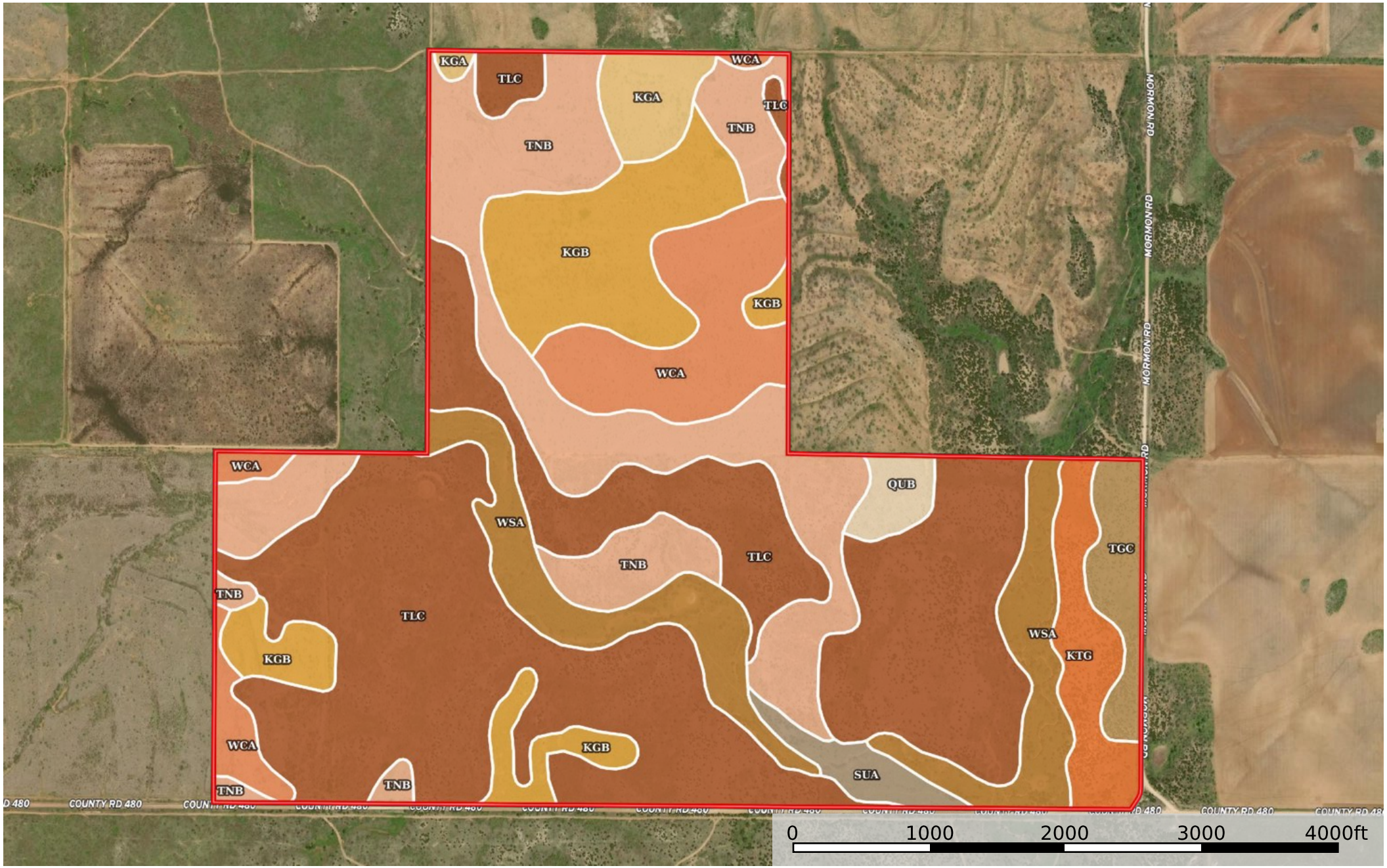
Circle MC Ranch

Foard County, Texas, 530 AC +/-





- Circle MC Ranch
- Aerodrome
- Heliport
- Seaport
- Glider Port
- Ultra Light
- Ballon Port



 Circle MC Ranch

|  Circle MC Ranch 526.53 ac

SOIL CODE	SOIL DESCRIPTION	ACRES	%	CPI	NCCPI	CAP
TLC	Talpa-La Casa complex, 1 to 5 percent slopes	218.98	41.59	0	30	7s
TnB	Tilvern clay loam, 1 to 3 percent slopes	102.64	19.49	0	43	3e
KgB	Kingco silty clay loam, 1 to 3 percent slopes	56.07	10.65	0	49	2e
WSA	Wheatwood-Spur loams, 0 to 1 percent slopes, frequently flooded	47.69	9.06	0	57	5w
WcA	Westill clay loam, 0 to 1 percent slopes	43.52	8.27	0	43	3s
KTG	Knoco-Talpa complex, 5 to 30 percent slopes, very bouldery	18.84	3.58	0	11	7e
TgC	Talpa gravelly loam, 1 to 5 percent slopes	12.76	2.42	0	16	7s
KgA	Kingco silty clay loam, 0 to 1 percent slopes	11.7	2.22	0	49	2s
SuA	Spur loam, 0 to 1 percent slopes, occasionally flooded	8.07	1.53	0	59	2w
QuB	Quanah silty clay loam, 1 to 3 percent slopes	6.26	1.19	0	52	2e
TOTALS		526.53(*)	100%	-	38.19	4.93









(*) Total acres may differ in the second decimal compared to the sum of each acreage soil. This is due to a round error because we only show the acres of each soil with two decimal.

Capability Legend

Increased Limitations and Hazards

Decreased Adaptability and Freedom of Choice Users

Land, Capability

								
	1	2	3	4	5	6	7	8
'Wild Life'	•	•	•	•	•	•	•	•
Forestry	•	•	•	•	•	•	•	
Limited	•	•	•	•	•	•	•	
Moderate	•	•	•	•	•	•		
Intense	•	•	•	•	•			
Limited	•	•	•	•				
Moderate	•	•	•					
Intense	•	•						
Very Intense	•							

Grazing Cultivation

(c) climatic limitations (e) susceptibility to erosion

(s) soil limitations within the rooting zone (w) excess of water