

Pike County-60 acres
US-51
Magnolia, MS 39652

\$223,800
60± Acres
Pike County



Pike County-60 acres
Magnolia, MS / Pike County

SUMMARY

Address

US-51

City, State Zip

Magnolia, MS 39652

County

Pike County

Type

Hunting Land, Recreational Land, Timberland

Latitude / Longitude

31.106531 / -90.483448

Taxes (Annually)

261

Acreage

60

Price

\$223,800

Property Website

<https://www.mossyoakproperties.com/property/pike-county-60-acres-pike-mississippi/57506/>



Pike County-60 acres
Magnolia, MS / Pike County

PROPERTY DESCRIPTION

This 60+/- acre property in Pike County offers a blend of mature hardwoods and pine, making it an excellent opportunity for timber investment. Its convenient location includes direct access with frontage on both I-55 and Highway 51. The land is well-suited for hunting, with abundant opportunities for whitetail deer, turkeys, and upland bird species. Additionally, the property features modern amenities such as fiber cable and a power line running through the north end. Contact Will Waits for more information!!

Will Waits

Certified Land Specialist

Licensed in MS

Office: [662-495-1121](tel:662-495-1121)

Cell: [769-572-2267](tel:769-572-2267)

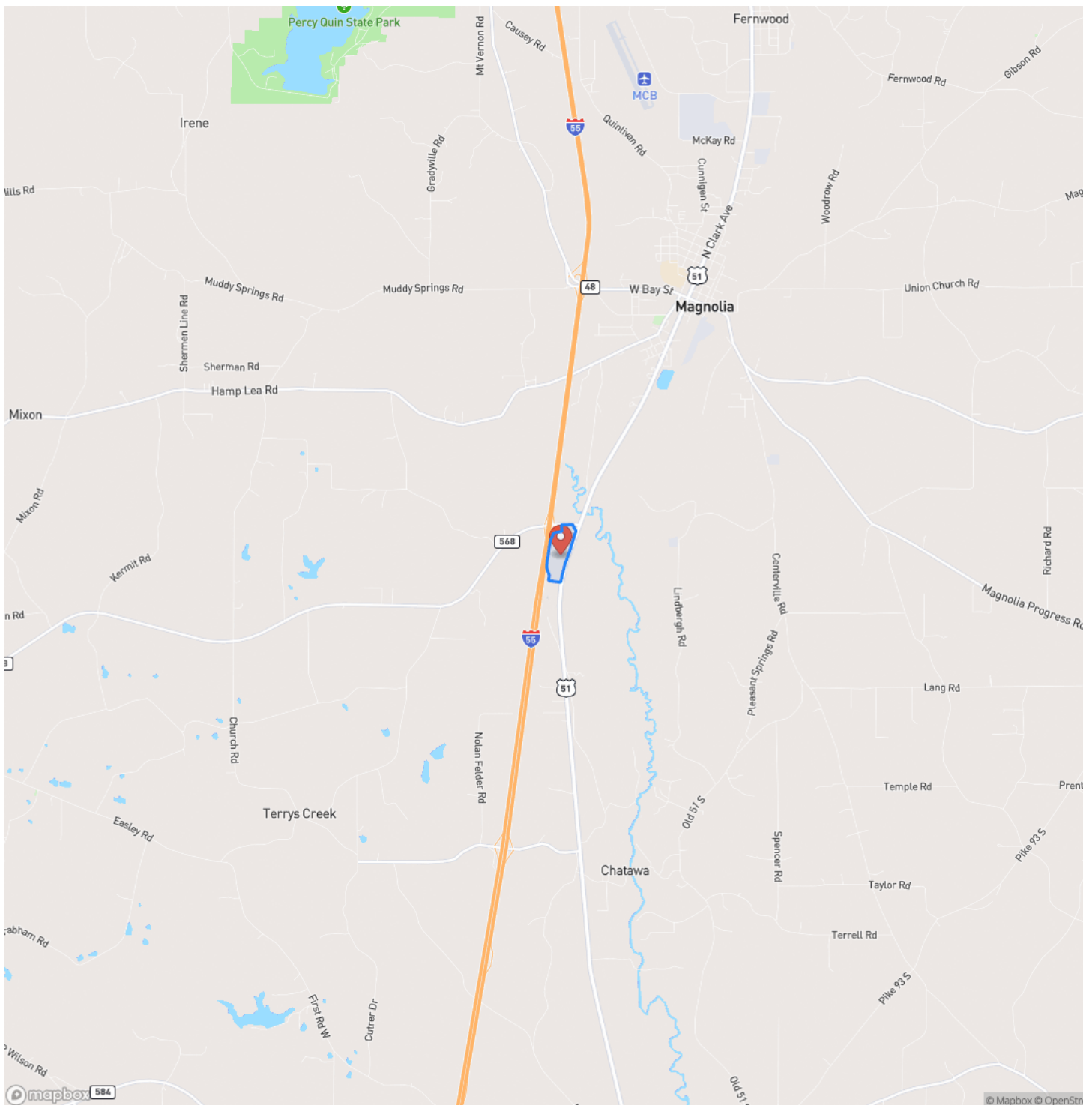
Email: wwaits@mossyoakproperties.com



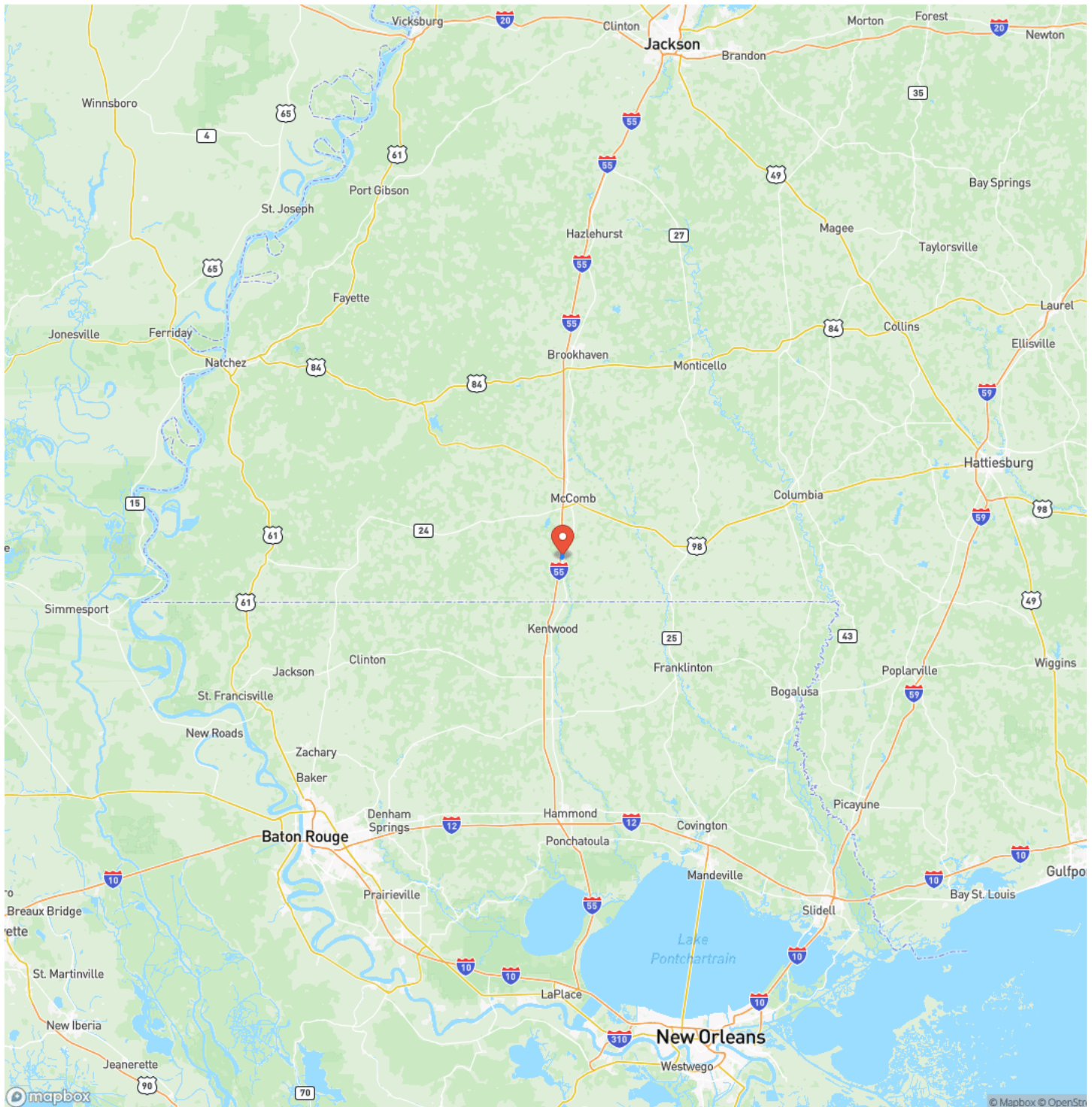
Pike County-60 acres
Magnolia, MS / Pike County



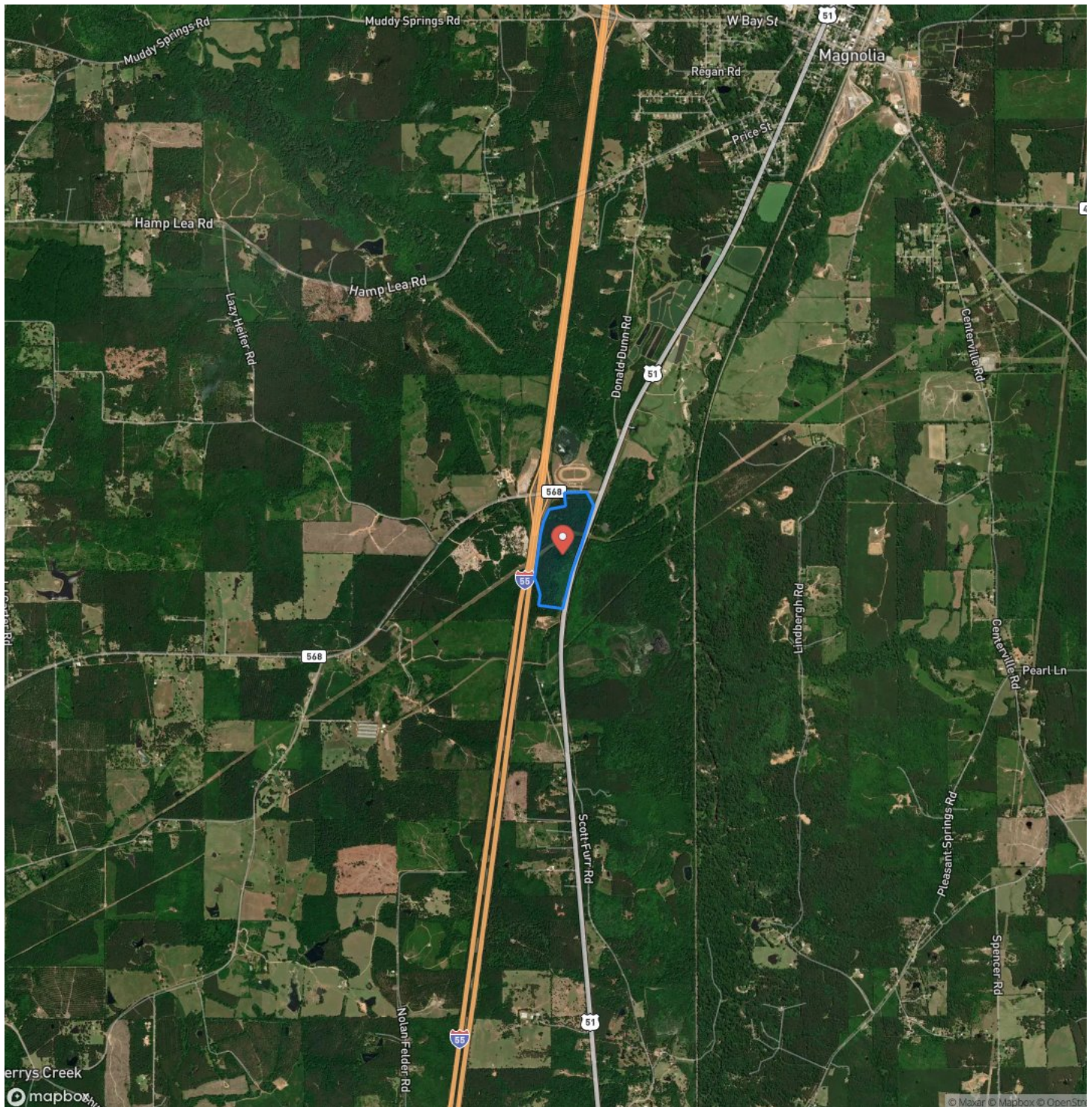
Locator Map



Locator Map



Satellite Map



Pike County-60 acres
Magnolia, MS / Pike County

LISTING REPRESENTATIVE

For more information contact:



Representative

Will Waits

Mobile

(769) 572-2267

Office

(662) 495-1121

Email

wwaits@mossyoakproperties.com

Address

108 Lone Wolf Dr.

City / State / Zip

Madison, MS 39051

NOTES



MORE INFO ONLINE:

MossyOakProperties.com

[illegible]

DISCLAIMERS

Information in this brochure is provided solely for information purposes and does not constitute an offer to sell or advertise real estate outside the states in which broker or agent licensed. The information presented has been obtained from sources deemed to be reliable, but is not guaranteed or warranted by the agent, broker, or the sellers of these properties. This offering is subject to errors, omissions, prior sale, price change, correction or withdrawal from the market without notice. All references to age, square footage, income, expenses, acreage, carrying capacity, and land classification, etc. are approximate. Prospective buyers are chargeable with and expected to conduct their own independent investigation of the information and the property and to rely only on those results. Sellers reserve the right to accept or reject any and all offers without liability to any buyer or cooperating broker.

Maps are provided for illustration purposes only, the accuracy is not warranted. Parcels on interactive maps are not adjusted to match aerial backgrounds. This information is for reference purposes only and is not a legal document. Data maps contain errors. The seller and seller's agent are making known to all potential buyers that there may be variations between the location of the existing fence lines and the legal description of the deeded property. Seller and seller's agent make no warranties with regard to the location of the fence lines in relationship to the deeded property lines, nor does the Seller make any warranties or representations with regard to the specific acreage contained within the fenced property lines. Seller is selling the property in an "as is" condition, which includes the location of the fences as they exist. Boundaries shown on the accompanying maps are approximate, based on county parcel data. The maps are not to scale. The accuracy of the maps is not guaranteed. Prospective buyers are encouraged to verify fence lines, deeded property lines and acreages using a licensed surveyor at their own expense.



Mossy Oak Properties Bottomland Real Estate

639 Commerce Street
West Point, MS 39773
(662) 495-1121
MossyOakProperties.com

