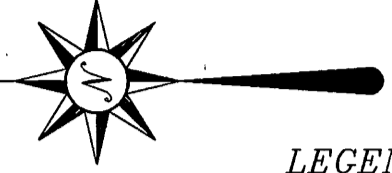


POINT OF BEGINNING
S.E. CORNER SEC. 25, T-4, R-4

VOLUME 101 PLAT NO. 97
WARREN COUNTY ENGINEER'S
RECORD OF LAND SURVEYS



- LEGEND**
STANDARD SYMBOLS THAT MAY APPEAR ON THIS DRAWING
- IP FOUND
 - ⊙ IP FOUND - 1"
 - ⊙ IP SET - 1/2"
 - ⊙ IP SET - 1"
 - PK FOUND
 - PK SET
 - CONC. MON. FND
 - ⊗ RR SPIKE FOUND
 - △ STONE FOUND

LINE TABLE

LINE	BEARING	DISTANCE
L1	N 22°33'26" E	53.54'
L2	N 46°29'09" W	29.60'
L3	S 46°29'09" E	34.03'
L4	N 65°18'56" E	50.38'
L5	S 19°02'13" W	41.47'

CURVE TABLE

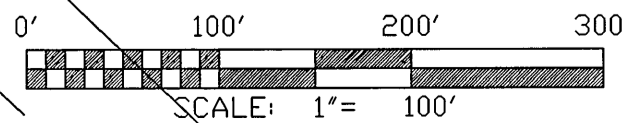
CURVE	RADIUS	ARC LENGTH	CHORD LEN	CHORD BEARING	DELTA ANGLE
C1	4016.53'	240.23'	240.20'	N 16°02'03" E	03°25'37"
C2	1133.22'	726.63'	714.24'	S 14°36'16" E	36°44'18"
C3	1880.08'	503.86'	502.36'	S 11°26'33" W	15°21'19"
C4	1940.08'	221.74'	221.62'	N 07°02'21" E	06°32'55"
C5	1193.22'	765.09'	752.05'	N 14°36'15" W	36°44'16"
C6	1163.22'	745.86'	733.15'	S 14°36'16" E	36°44'17"
C7	1910.08'	511.90'	510.37'	S 11°26'33" W	15°21'19"
C8	1940.08'	298.20'	297.91'	N 14°43'00" E	08°48'24"

THOMAS HUDSON, et al
PLAT OF SURVEY
SITUATED IN
SECTION 25, TOWN 4, RANGE 4
CITY OF LEBANON
&
TURTLECREEK TOWNSHIP
WARREN COUNTY
OHIO

Charles H. Huntley
CHARLES H. HUNTLEY, OHIO REG. SUR. No. 5630



NOTES:
BEARING SYSTEM FROM S.R. 67, PG. 45
DEED RECORDS AS SHOWN ON PLAT ARE SOURCE DOCUMENT.
OCCUPATION IN GENERAL FITS SURVEY.
ALL MONUMENTS IN GOOD CONDITION.



(X-REF C-4292)

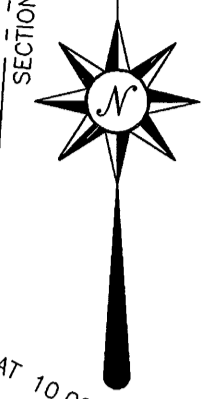
KING-HASSELBRING & ASSOCIATES
CIVIL ENGINEERS • LAND SURVEYORS
212 NORTH BROADWAY • LEBANON, OHIO 45036-1716
TELEPHONE: (513) 932-3806 FACSIMILE: (513) 932-8847

WILLIAM & CHARLES WATSON
STATE ROUTE 48
WARREN COUNTY, OHIO

CHECKED BY: <i>CH</i>	DRAWN BY: R. M. N.	DATE: 06/10/97	.DWG NAME: HUDSON-228
SCALE: 1" = 100'		.CRD NAME: HUDSON.CRD	DRAWING No. C-10123

- LEGEND**
STANDARD SYMBOLS THAT MAY APPEAR ON THIS DRAWING
- IP FOUND - 1/2"
 - IP SET - 1/2"
 - ⊙ IP SET - 1"
 - ⊕ IP FOUND - 1"
 - △ STONE FOUND
 - ⊗ RR SPIKE FOUND
 - PK FOUND

J. ERNST KITE, et al
14.19 AC.
O.R. 168, PG. 313



J. ERNST KITE, et al
84,532 AC.
O.R. 168, PG. 313

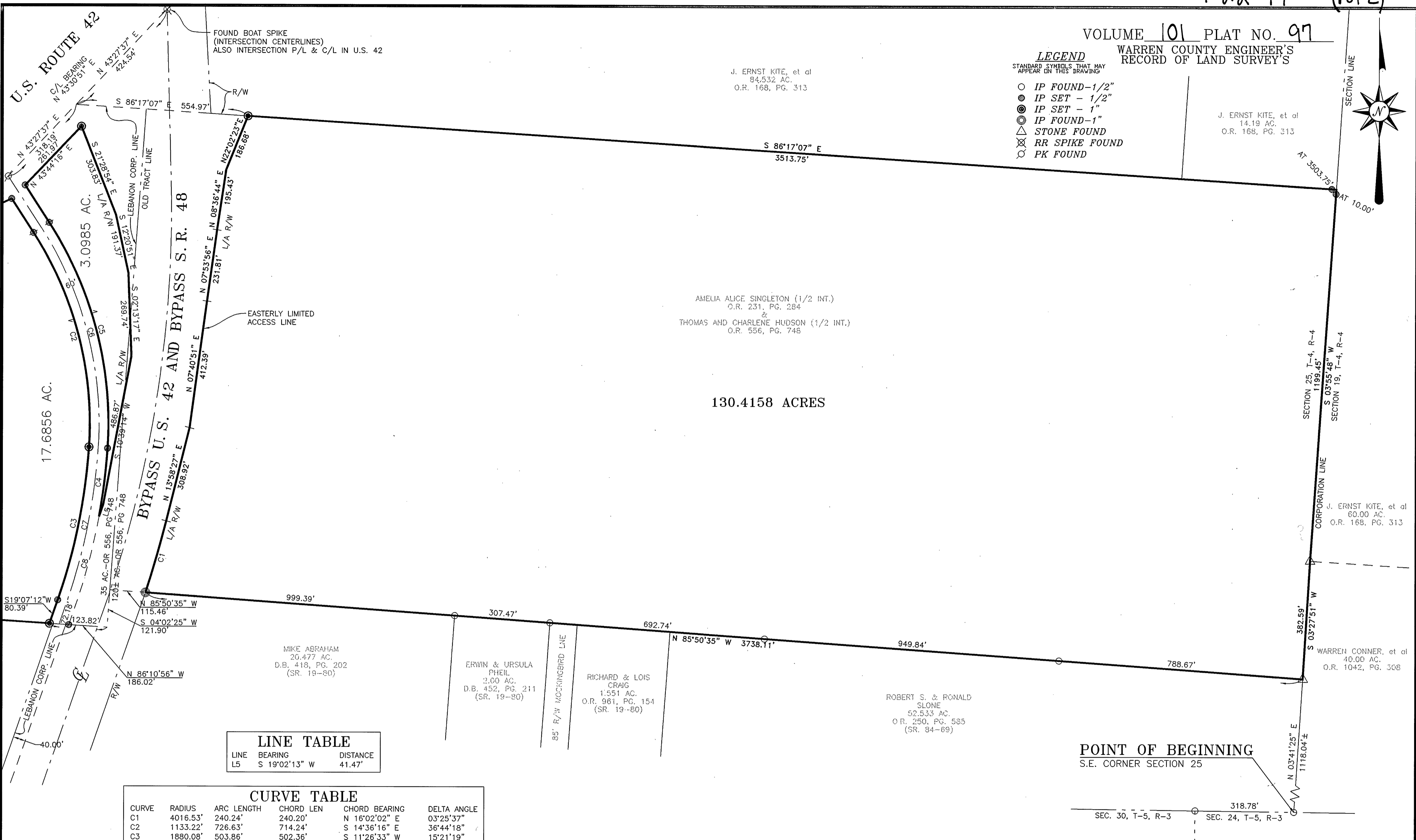
AMELIA ALICE SINGLETON (1/2 INT.)
O.R. 231, PG. 284
&
THOMAS AND CHARLENE HUDSON (1/2 INT.)
O.R. 556, PG. 748

130.4158 ACRES

SECTION 25, T-4, R-4
1199.45'
SECTION 19, T-4, R-4
S 03°55'48" W

J. ERNST KITE, et al
60.00 AC.
O.R. 168, PG. 313

WARREN CONNER, et al
40.00 AC.
O.R. 1042, PG. 308



LINE TABLE

LINE	BEARING	DISTANCE
L5	S 19°02'13" W	41.47'

CURVE TABLE

CURVE	RADIUS	ARC LENGTH	CHORD LEN	CHORD BEARING	DELTA ANGLE
C1	4016.53'	240.24'	240.20'	N 16°02'02" E	03°25'37"
C2	1133.22'	726.63'	714.24'	S 14°36'16" E	36°44'18"
C3	1880.08'	503.86'	502.36'	S 11°26'33" W	15°21'19"
C4	1940.08'	221.74'	221.62'	N 07°02'21" E	06°32'55"
C5	1193.22'	765.09'	752.05'	N 14°36'15" W	36°44'16"
C6	1163.22'	745.86'	733.15'	S 14°36'16" E	36°44'17"
C7	1910.08'	511.90'	510.37'	S 11°26'33" W	15°21'19"
C8	1940.08'	298.20'	297.91'	N 14°43'00" E	08°48'24"

POINT OF BEGINNING
S.E. CORNER SECTION 25

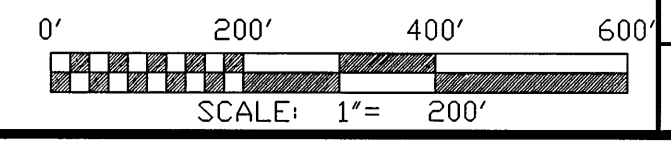
SEC. 30, T-5, R-3 318.78'
SEC. 24, T-5, R-3

(X-REF C-4292)

THOMAS HUDSON, et al
PLAT OF SURVEY

SITUATED IN
SECTION 25, TOWN 4, RANGE 4
TURTLECREEK TOWNSHIP
WARREN COUNTY
OHIO

NOTES:
BEARING SYSTEM FROM S.R. 67, PG. 45
DEED RECORDS AS SHOWN ON PLAT ARE SOURCE DOCUMENT.
OCCUPATION IN GENERAL FITS SURVEY.
ALL MONUMENTS IN GOOD CONDITION.
Additional monuments not set per request of owner.



KING-HASSELBRING & ASSOCIATES
CIVIL ENGINEERS • LAND SURVEYORS
212 NORTH BROADWAY LEBANON, OHIO 45036-1716
TELEPHONE: (513) 932-3806 FACSIMILE: (513) 932-6847

WILLIAM & CHARLES WATSON
STATE ROUTE 48
WARREN COUNTY, OHIO

CHECKED BY: <i>CH</i>	DRAWN BY: R. M. N.	DATE: 06/10/97	DWG NAME: HUDSON-1304
SCALE: 1" = 200'		CRD NAME: HUDSON.CRD	DRAWING No. C-10124

Charles H. Huntley
CHARLES H. HUNTLEY, OHIO REG. SURV. No. 5630

