

Double Aces Ranch
2601 County Road 314
Robert Lee, TX 76945

\$11,300,000
6,552± Acres
Coke County



Double Aces Ranch
Robert Lee, TX / Coke County

SUMMARY

Address

2601 County Road 314

City, State Zip

Robert Lee, TX 76945

County

Coke County

Type

Ranches, Hunting Land, Recreational Land

Latitude / Longitude

32.083012 / -100.428294

Acreage

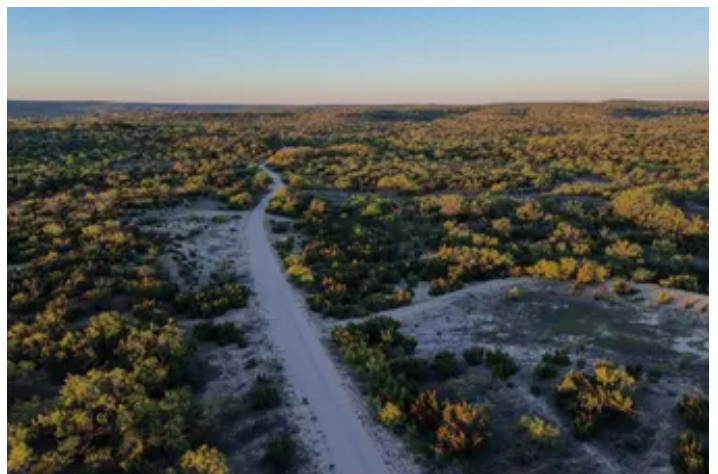
6,552

Price

\$11,300,000

Property Website

<https://kwland.com/property/double-aces-ranch/coke/texas/94685/>



Double Aces Ranch **Robert Lee, TX / Coke County**

PROPERTY DESCRIPTION

Just Reduced!

Double Aces Ranch encompasses roughly 6,552 contiguous acres in northern Coke County. The ranch lies in a rare ecological crossroads where rolling Hill Country terrain, South Texas brush energy, and West Texas mesa country meet. Elevation changes, sweeping ridges, deep drainages, and productive valleys create a ranch with working capability, scenery, and huntability all on a scale large enough to manage, improve, and protect long-term.

The diversity of native grasses is impressive and includes species such as little bluestem, buffalo grass, sideoats grama, hairy grama, hooded windmillgrass, green sprangletop, white tridens, and canada wildrye. Timber and woody cover transition from live oak and post oak pockets to ashe juniper, mesquite, cedar elm, shin oak, and native brush more common to arid regions further west and south.

Location & Area Context

Situated between Abilene and San Angelo, the ranch is easy to access while still feeling private and remote. The north gate sits only minutes west of Blackwell, Texas a quiet agricultural town with day-to-day essentials such as fuel, hardware, groceries, feed, and dining. Oak Creek Lake borders Blackwell and provides fishing, boating, and weekend recreation close by.

Abilene: approx. 1 hour

San Angelo: approx. 1 hour

Midland/Odessa: approx. 2 hours

Robert Lee (County Seat): closest access near south boundary

Ranch Terrain & Grazing Layout

The ranch's topography offers a mix of rugged ridges, mesa tops, open grass meadows, timbered draws, and scattered flats suitable for livestock, wildlife, and strategic forage plans. Seven interior pastures enable legitimate rotational grazing without compromising wildlife cover or natural travel corridors.

Water & Infrastructure

Water distribution is a major asset of Double Aces Ranch and supports both livestock and wildlife:

7 operational windmills

1 solar well

1 electric water wells

Multiple concrete pila storage tanks & drinkers

Seasonal creek systems, large draws, & scattered dirt tanks

Headquarters & Improvements

The headquarters sits near the east-central portion of the ranch beneath large hardwoods and consists of:

Two 3-bedroom homes



Mature pecan & live oak cover

25 acres of tillable land set up as a food plot in direct view of HQ

Pole barn, cattle working pens, horse stalls

Dedicated water well serving both homes and improvement area

Concrete pila converted into a shaded, chlorinated swimming pool

Fencing & Additional Features

Perimeter is primarily low fence with a short area of high fence on the west side

Approximately 80% of perimeter & interior fencing replaced in last 8 years

Historic, high-fenced, 1-mile asphalt landing strip with potential for rehabilitation

Access & Internal Road System

Primary access arrives from a county-maintained road at the northeast corner. Inside the entrance lies a professionally-built caliche spine road with four concrete spillways that runs the full length of the ranch to the south gate. Additional two-tracks, utility roads, and ATV trails extend across the property. The south exit connects to HWY 158 via Graham Valley Road.

Wildlife & Hunting Value

The ranch is situated in a well-known free-range hunting region with a balanced habitat system and plentiful natural water sources.

Whitetail deer with above-average body mass & antler potential

Strong Rio Grande turkey population

Bobwhite quail (excellent in wet years)

High-volume dove flyway

Seasonal waterfowl including teal, pintail, wigeon, and gadwall

Sandhill crane flights through colder seasons

Positioning & Takeaway

Large legacy ranches in this region with water, interior infrastructure, grazing design, and diverse habitat rarely hit the public market. Double Aces Ranch offers scale, scenery, history, functionality, and long-term management potential all with the blank-canvas upside investors, cattle operators, and recreational buyers look for.



Double Aces Ranch
Robert Lee, TX / Coke County



Locator Map



Locator Map



Satellite Map



DISCLAIMERS

Information in this brochure is provided solely for information purposes and does not constitute an offer to sell or advertise real estate outside the states in which broker or agent licensed. The information presented has been obtained from sources deemed to be reliable, but is not guaranteed or warranted by the agent, broker, or the sellers of these properties. This offering is subject to errors, omissions, prior sale, price change, correction or withdrawal from the market without notice. All references to age, square footage, income, expenses, acreage, carrying capacity, and land classification, etc. are approximate. Prospective buyers are chargeable with and expected to conduct their own independent investigation of the information and the property and to rely only on those results. Sellers reserve the right to accept or reject any and all offers without liability to any buyer or cooperating broker.

Maps are provided for illustration purposes only, the accuracy is not warranted. Parcels on interactive maps are not adjusted to match aerial backgrounds. This information is for reference purposes only and is not a legal document. Data maps contain errors. The seller and seller's agent are making known to all potential buyers that there may be variations between the location of the existing fence lines and the legal description of the deeded property. Seller and seller's agent make no warranties with regard to the location of the fence lines in relationship to the deeded property lines, nor does the Seller make any warranties or representations with regard to the specific acreage contained within the fenced property lines. Seller is selling the property in an "as is" condition, which includes the location of the fences as they exist. Boundaries shown on the accompanying maps are approximate, based on county parcel data. The maps are not to scale. The accuracy of the maps is not guaranteed. Prospective buyers are encouraged to verify fence lines, deeded property lines and acreages using a licensed surveyor at their own expense.



TX Real Estate Group
10917 Wayne Ave
Lubbock, TX 79424
(806) 370-7233
<https://txrealestategroup.com/>

