



40 Creek Off-Grid Bunker Outpost: An Oasis in Oregon's Desert Wilderness

1,399.91 Acres of Remote and Pristine Land

\$500,000



Rich Bradbury

(541) 417-0250

rich@highcountryrealestate.com

40 Creek Off-Grid Bunker Outpost

A Hidden Gem Amidst Oregon's Desert Expanse

Picture, if you will, an ethereal landscape where time seems to stand still. Amidst Oregon's arid wilderness, 40 Creek Off-Grid Bunker Outpost lies waiting, cloaked in mystery and rugged beauty.

Spread across a tapestry of 1,399.91 acres, this land is the epitome of nature's raw splendor. A bunker, stoic and self-reliant, anchors itself in this untamed terrain. The whisper of the wind carries tales of bygone pioneers, and here, like them, you may craft a self-sustaining existence. Though the well once bore water, it is now dry, beckoning the resourceful.

Under a velvet canvas pierced by countless shimmering stars, the property unveils its celestial treasures. Within this Dark Sky sanctuary, the night sky's ballet is a sight to behold.

Not far, nature's wonders abound – Hart Mountain National Antelope Refuge, the regal sentinels of Beatys Butte, Sheldon National Wildlife Refuge, and the formidable Steens Mountain.

So, dear explorer, journey through these pages, where every turn echoes the whispers of the wild. Here, in a place as boundless as the night sky, your desert odyssey awaits.

Note: A land so remote, it calls for ingenuity and fortitude.



1,399.91 Acres

Overview:

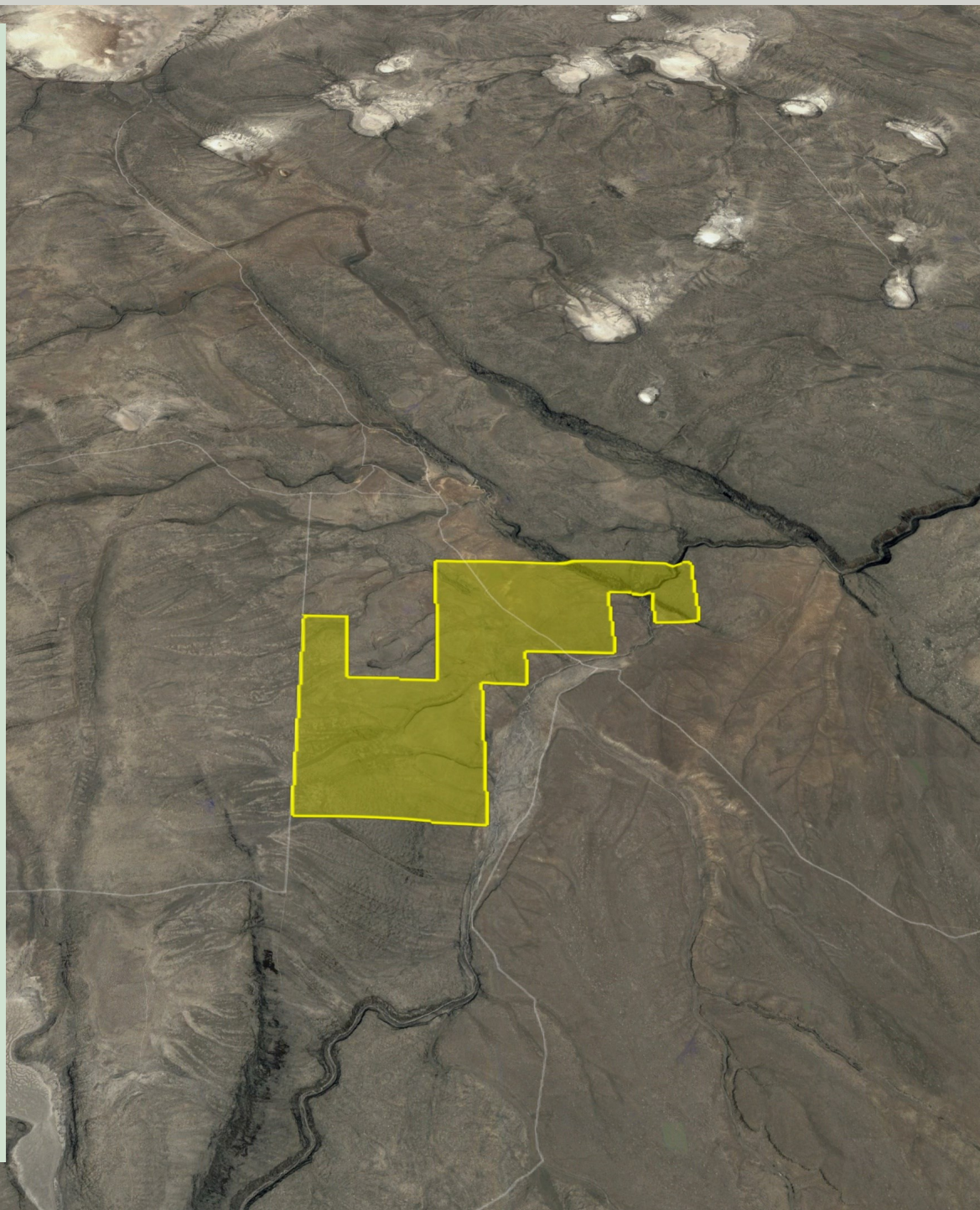
Immerse yourself in the untouched desert wilderness of Oregon with this remarkable, self-sustaining, bunker-style outpost. Spread across an expansive 1,399.91 acres, this one-of-a-kind property is the epitome of tranquility, offering off-grid living and an unrivaled stargazing experience within a designated Dark Sky area.

Property Details:

- Parcel 1: 520 acres
- Parcel 2: 719.91 acres
- Parcel 3: 160 acres

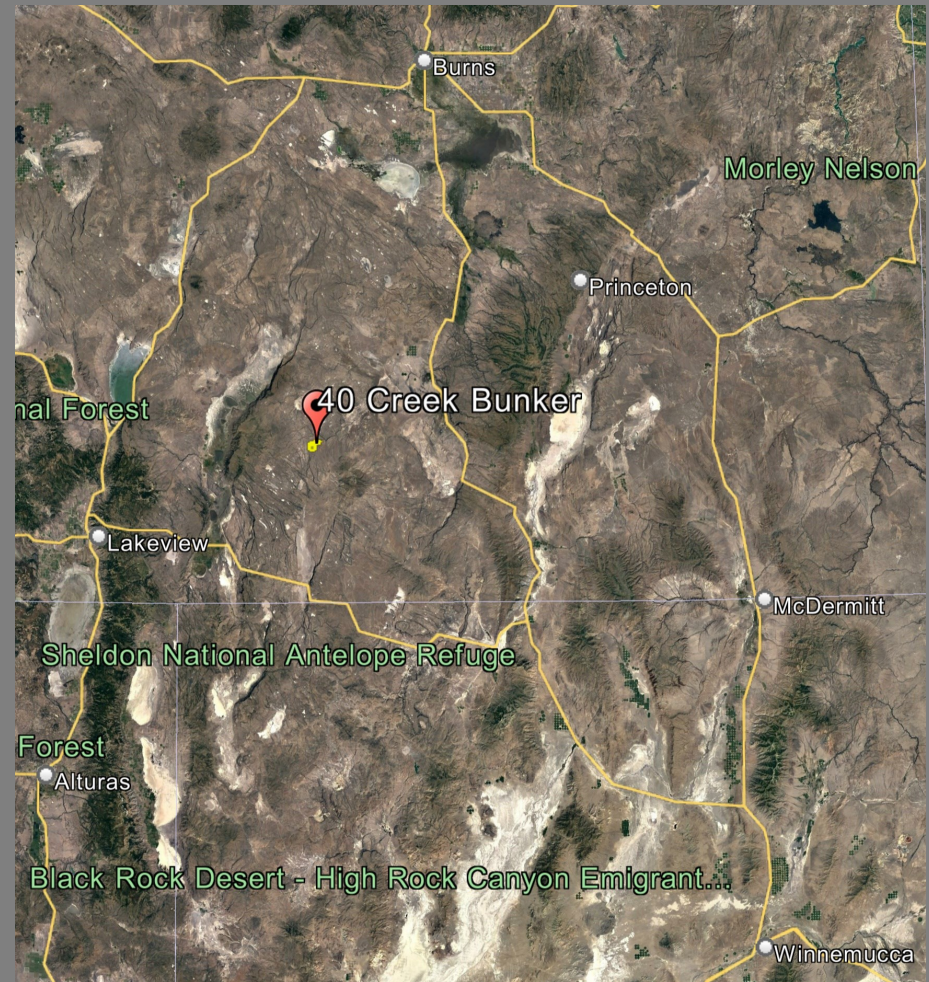
Features:

- **Unique Bunker-Style Structure:** The property includes a bunker-style shelter designed for self-sufficiency (requires diesel fuel and propane), standing as a solitary dwelling in an area with nearly no other livable structures except Grazing Association Cow Camps.
- **Ultimate Seclusion:** Located in one of the most remote areas of the lower 48 states, this estate offers unmatched privacy and detachment from the hustle and bustle.
- **Designated Dark Sky Area:** Perfect for astronomers and stargazers, this sanctuary boasts crystal-clear night skies free from light pollution.



Location and Attractions:

- Situated between Hart Mountain National Antelope Refuge, Beatys Butte, and close to Sheldon National Wildlife Refuge, and not far from the majestic Steens Mountain.
- Hart Mountain National Antelope Refuge (~30 miles away) is a protected area spanning over 270,000 acres and is home to pronghorn antelope, bighorn sheep, and an array of other wildlife. It's also a hub for hiking, fishing, and wildlife observation.
- Beatys Butte (~20 miles away) is a prominent peak in southeastern Oregon known for its wild horse population. The rugged and isolated nature of the butte makes it an exciting destination for adventure seekers.
- Sheldon National Wildlife Refuge (~90 miles away) encompasses over 575,000 acres of high desert habitat for pronghorn antelope, bighorn sheep, and a variety of bird species. It is a cherished area for wildlife enthusiasts, hikers, and photographers.
- Steens Mountain (~150 miles away) is a massive fault-block mountain in southeastern Oregon. Its diverse landscape includes towering cliffs, alpine meadows, and a lush forest. It's a popular destination for hiking, camping, and enjoying breathtaking views.



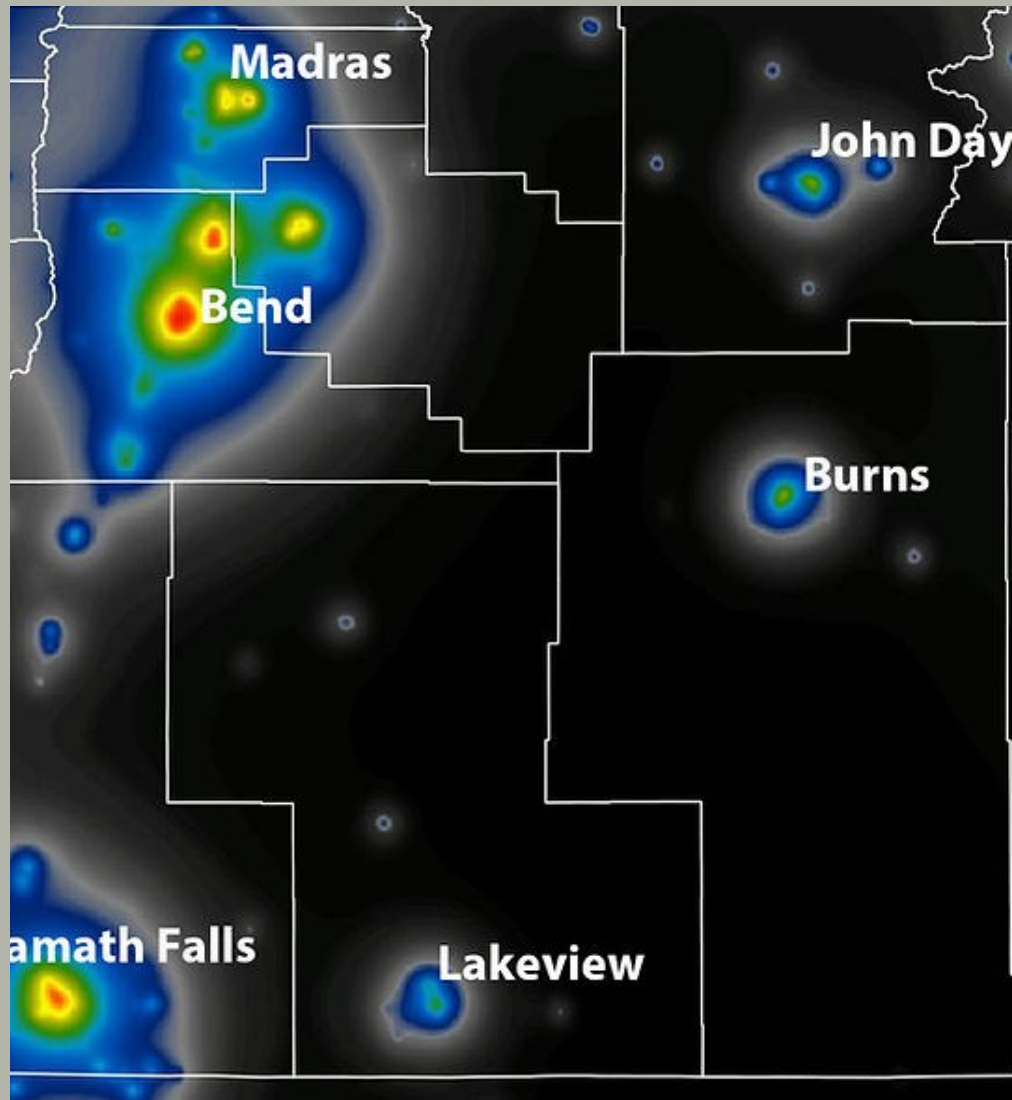
Nearby Towns and Cities:

- Lakeview, Oregon (~150 miles; Population ~2,300): Known as the "Tallest Town in Oregon," offering essential amenities and services.
- Burns, Oregon (~220 miles; Population ~2,700): A charming town with local shops and a close-knit community.
- Winnemucca, Nevada (~170 miles; Population ~7,800): A larger city with a mix of historical allure and modern conveniences.

In Oregon, landowners can obtain Landowner Preference (LOP) tags for hunting deer, elk, and antelope through the Oregon Department of Fish and Wildlife (ODFW). To qualify, a property must be at least 40 contiguous acres for deer and elk, and 160 acres for pronghorn antelope. The 1,399-acre property described likely qualifies for LOP tags if it offers suitable habitat.

For more information on LOP tags, contact the Oregon Department of Fish and Wildlife at (503) 947-6000.





Oregon Outback is recognized by residents and scientists as home to some of the darkest night skies in the world. Dark Sky communities are rising quickly in popularity for stargazers and amateur astronomers and are a gateway to awareness of “light pollution.”

Embark on Your Desert Adventure

As our journey through the 40 Creek Off-Grid Bunker Outpost reaches its zenith, consider the endless possibilities that this illustrious 1,399.91 acres present. Here, where Oregon's arid beauty stands timeless, an opportunity to carve your sanctuary amidst the stars and rolling terrain is at hand.

This land, situated between the enriching Hart Mountain National Antelope Refuge and the majestic Beatys Butte, and in close proximity to Sheldon National Wildlife Refuge and the imposing Steens Mountain, is a tapestry of nature's grandeur.

With solitude as your neighbor and the night sky as your canvas, envision the legacy you can establish in this pristine wilderness.

It is a land for visionaries seeking solace and boundless skies. A place where dreams transcend the horizon.

Make the bold decision. Connect with the land's ancient spirit. Let this Oregon wilderness be the stage for your dreams.

Seize this opportunity. Reach out and secure your future in Oregon's desert wilderness.

****Contact Rich Bradbury for a private tour and details:****

Phone: (541) 417-0250

Email: rich@highcountryrealestate.com

