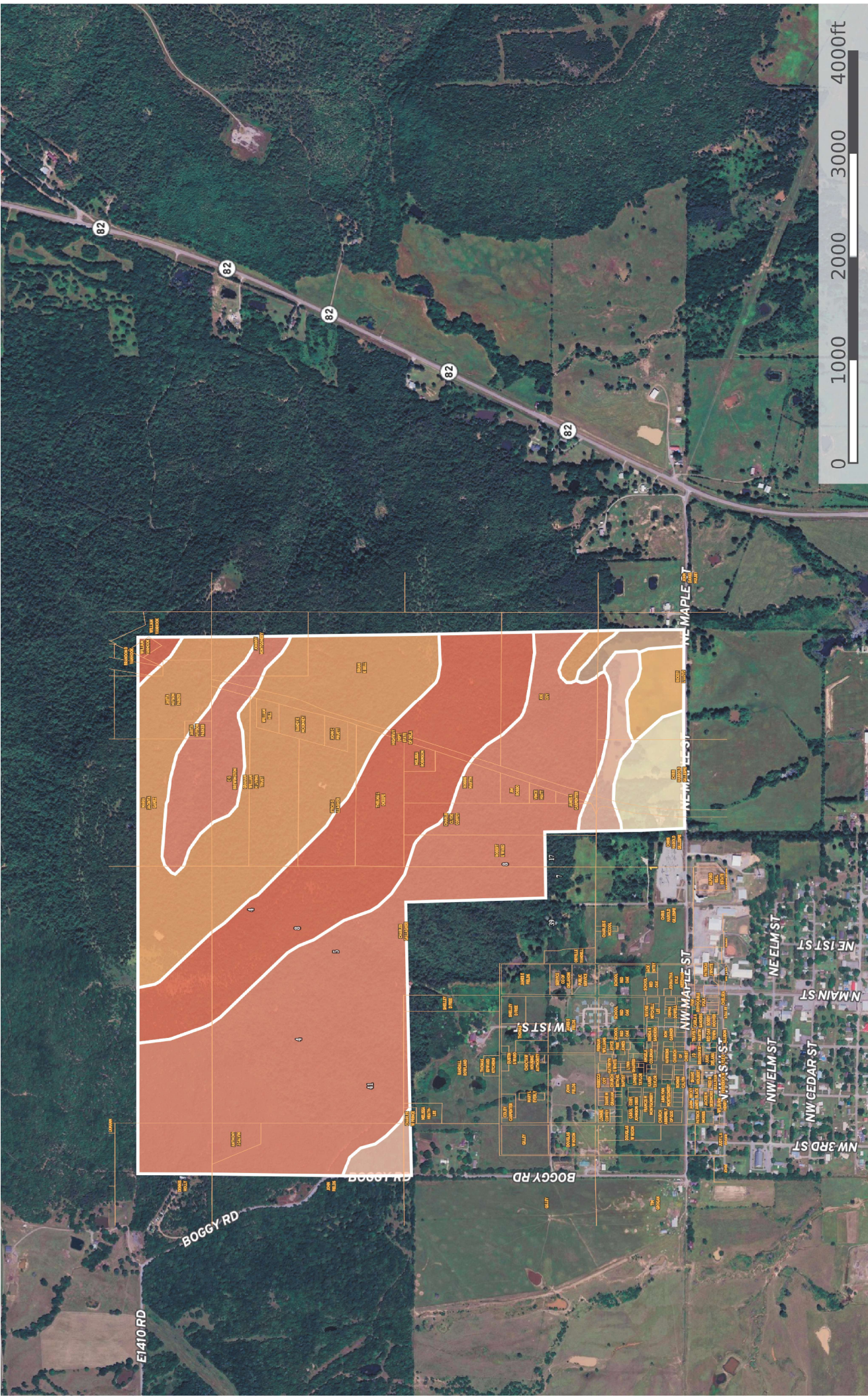


# Fields Rains Gallagher 455 Soils Oklahoma, AC +/-



SOIL CODE	SOIL DESCRIPTION	ACRES	%	CPI	NCCPI	CAP
4	Carnasaw-Clebit association, 8 to 30 percent slopes	198.16	43.85	0	45	7e
8	Carnasaw-Pirum-Clebit association, 3 to 12 percent slopes	116.12	25.7	0	51	6e
5	Carnasaw-Clebit-Pickens variant association, 30 to 45 percent slopes	95.28	21.08	0	9	7e
41	Tamaha silt loam, 3 to 5 percent slopes	15.21	3.37	0	62	3e
39	Stigler silt loam, 1 to 3 percent slopes	14.25	3.15	0	64	3s
7	Carnasaw-Pirum complex, 3 to 8 percent slopes	8.31	1.84	0	58	4e
17	Counts-Rexor complex, 0 to 12 percent slopes	4.57	1.01	0	58	6e
TOTALS		451.9(*)	100%	-	40.49	6.42

(\*) Total acres may differ in the second decimal compared to the sum of each acreage soil. This is due to a round error because we only show the acres of each soil with two decimal.

