

Trophy Whitetail Haven on 47+- Acres in Famed Buffalo County
00 Moe Road
Mondovi, WI 54755

\$450,000
47± Acres
Buffalo County



Trophy Whitetail Haven on 47+- Acres in Famed Buffalo County Mondovi, WI / Buffalo County

SUMMARY

Address

00 Moe Road

City, State Zip

Mondovi, WI 54755

County

Buffalo County

Type

Hunting Land, Recreational Land

Latitude / Longitude

44.594897 / -91.594282

Taxes (Annually)

1286

Acreage

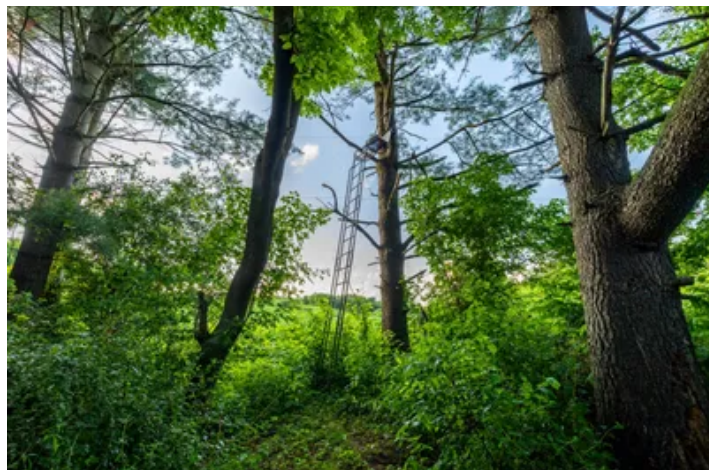
47

Price

\$450,000

Property Website

<https://mississippivalleyre.com/property/trophy-whitetail-haven-on-47-acres-in-famed-buffalo-county-buffalo-wisconsin/84869/>

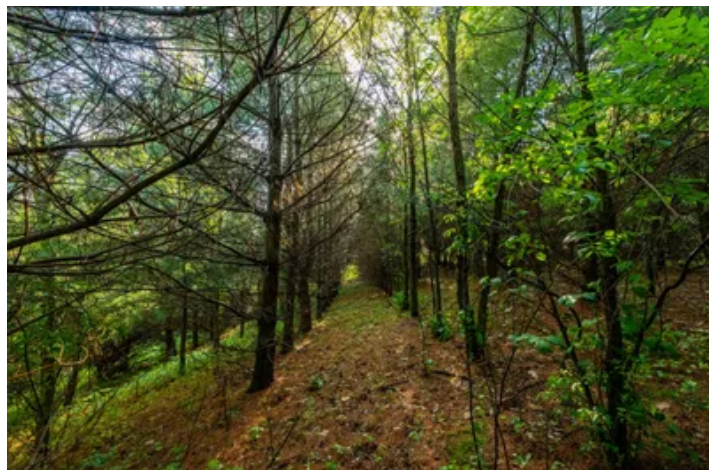


Trophy Whitetail Haven on 47+- Acres in Famed Buffalo County Mondovi, WI / Buffalo County

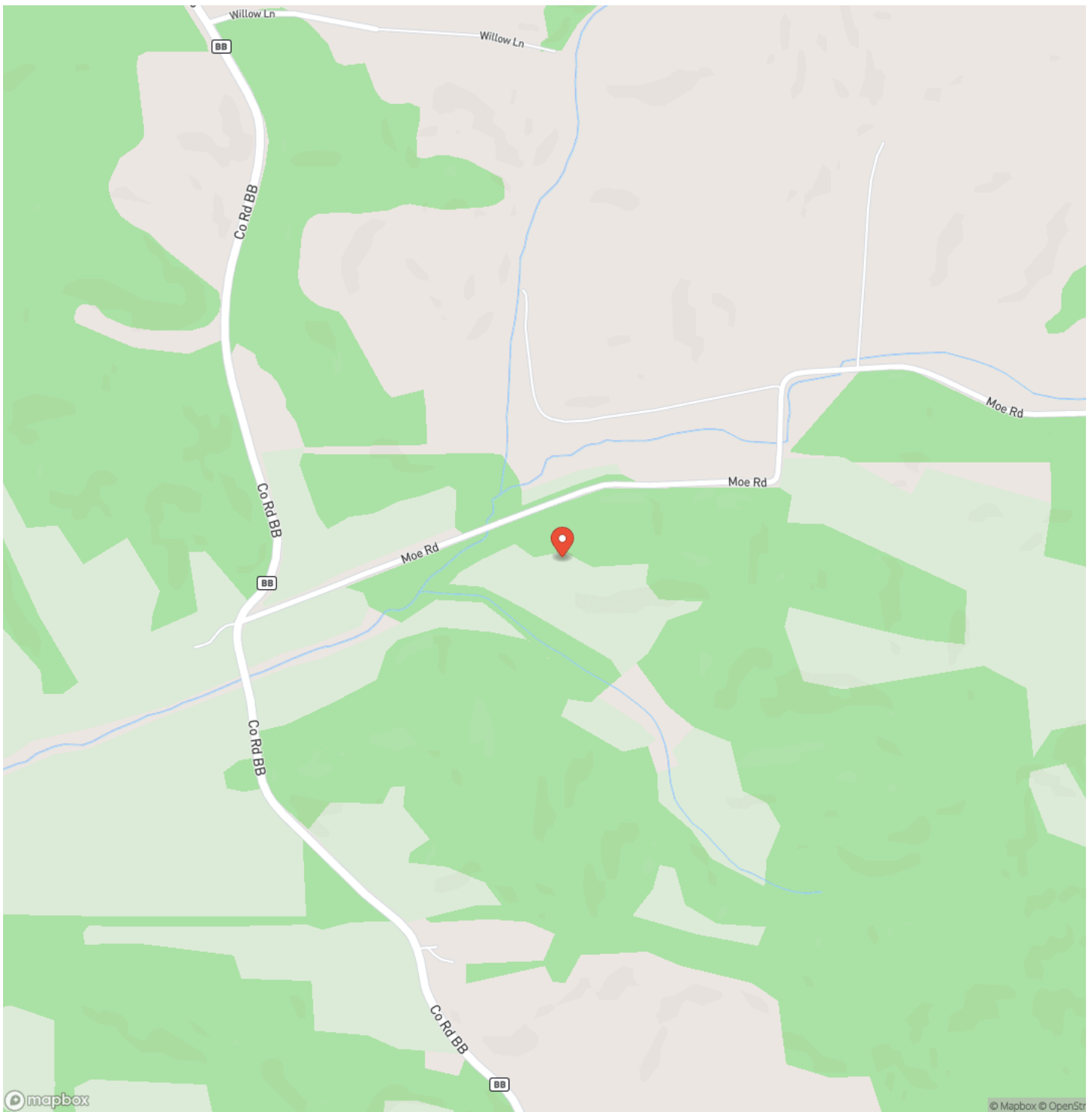
PROPERTY DESCRIPTION

Check out this remarkable 47+-acre hunting haven tucked into the heart of Buffalo County, Wisconsin. This exceptional property is tailored for harvesting mature bucks, offering a dynamic landscape that includes productive crop fields, established hardwoods, and a private orchard planted with a variety of nut and fruit trees. 5 Millennium Ladder Stands and two Box Blinds have been thoughtfully placed throughout the property for optimal access and strategic hunting. Boasting a rich history of successful hunts and a well-maintained trail network, this land is designed for easy access and minimal disturbance. Set in the legendary deer country of Buffalo County, this is your chance to claim a slice of Wisconsin's storied hunting tradition. Reach out today for a private showing —don't miss the opportunity to make this your own!

**Trophy Whitetail Haven on 47+- Acres in Famed Buffalo County
Mondovi, WI / Buffalo County**

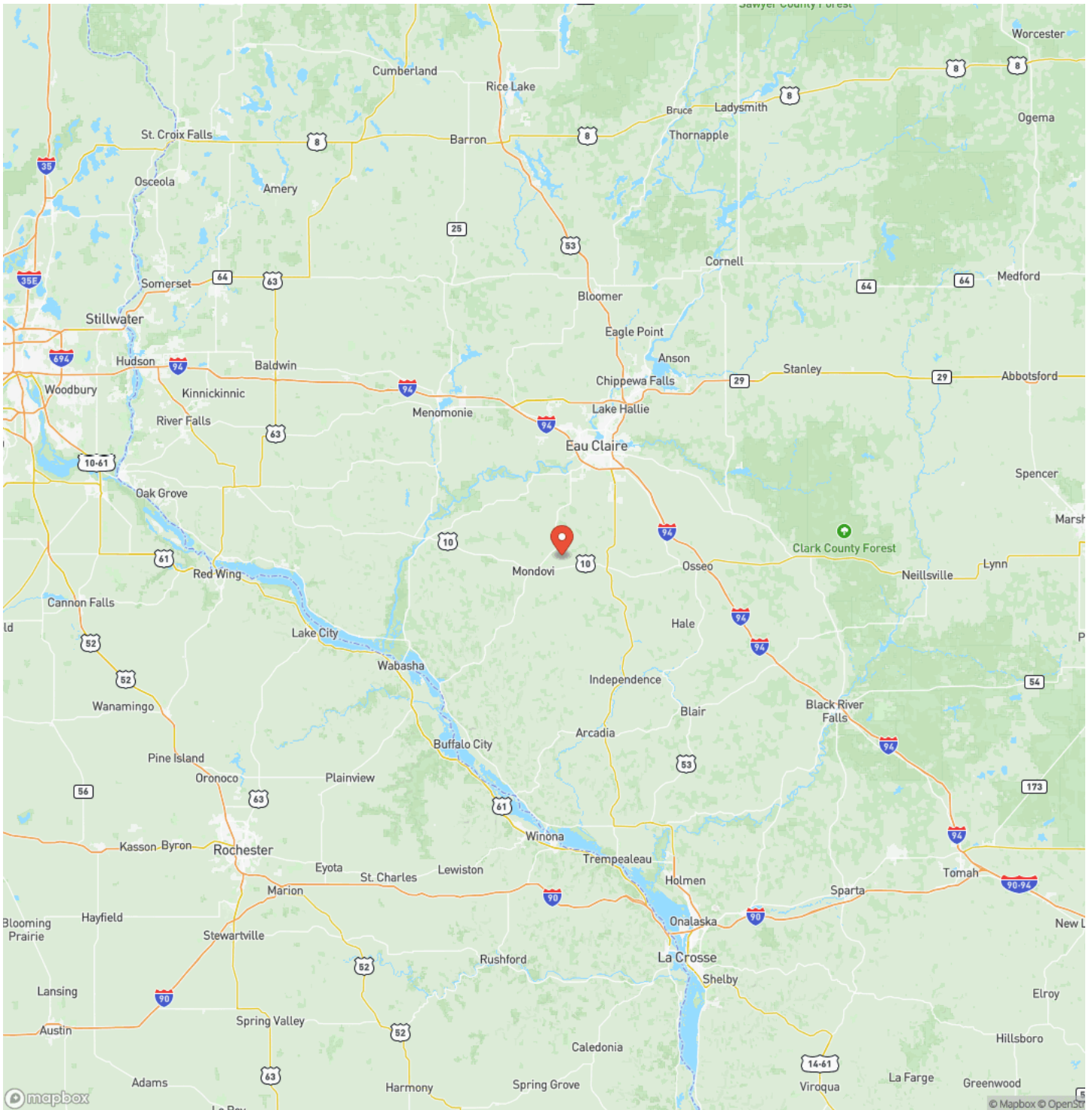


Locator Map

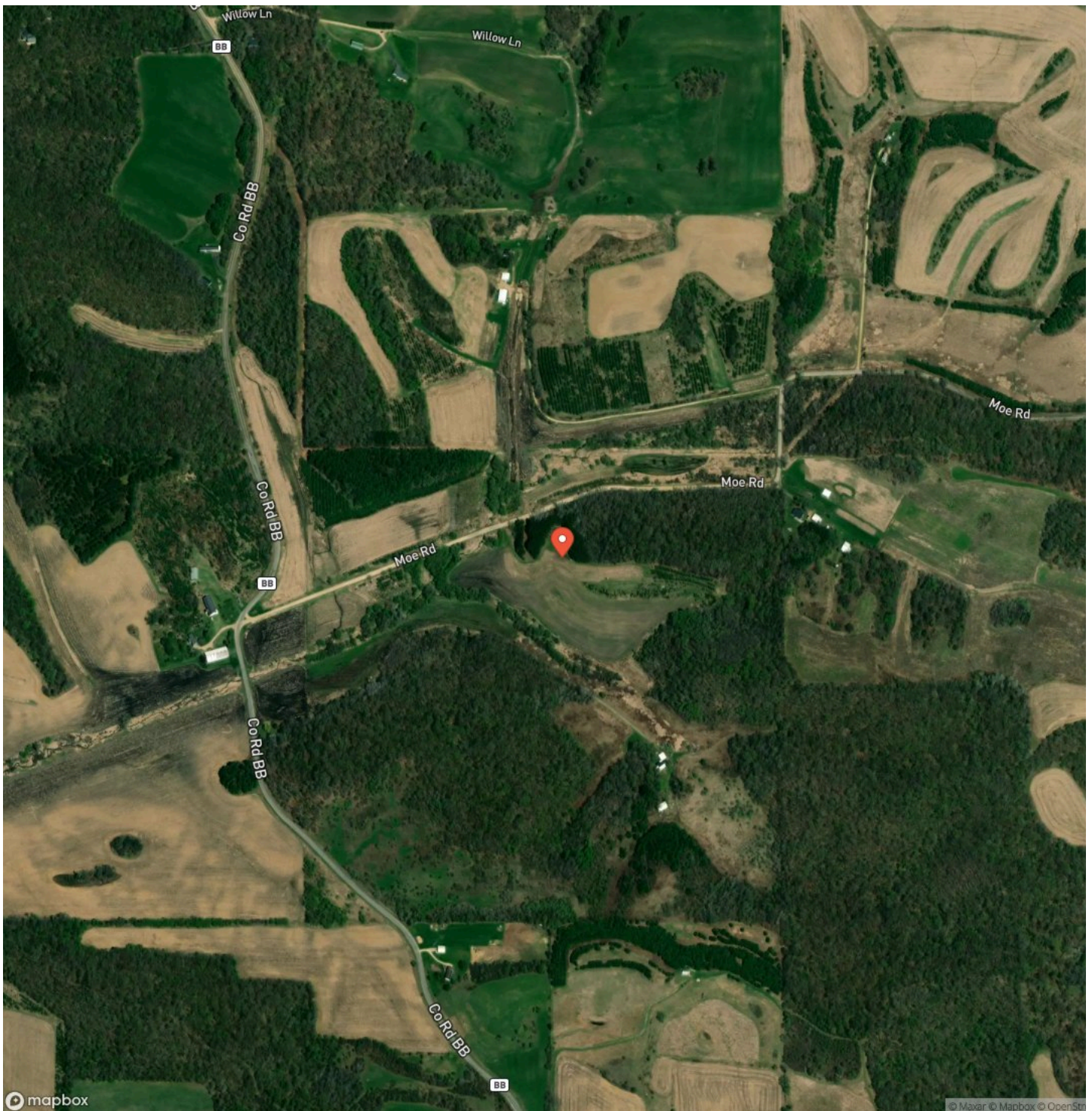


**Trophy Whitetail Haven on 47+- Acres in Famed Buffalo County
Mondovi, WI / Buffalo County**

Locator Map



Satellite Map



Trophy Whitetail Haven on 47+- Acres in Famed Buffalo County Mondovi, WI / Buffalo County

LISTING REPRESENTATIVE

For more information contact:



Representative

Matthew Haselwander

Mobile

(715) 579-9830

Office

(715) 579-9830

Email

matthew@mossyoakproperties.com

Address

City / State / Zip

NOTES

[illegible]

This image shows a single sheet of white paper with horizontal ruling lines. The lines are evenly spaced and run across the width of the page. There are no margins, text, or other markings on the paper.



<https://mississippivalleyre.com>

DISCLAIMERS

Information in this brochure is provided solely for information purposes and does not constitute an offer to sell or advertise real estate outside the states in which broker or agent licensed. The information presented has been obtained from sources deemed to be reliable, but is not guaranteed or warranted by the agent, broker, or the sellers of these properties. This offering is subject to errors, omissions, prior sale, price change, correction or withdrawal from the market without notice. All references to age, square footage, income, expenses, acreage, carrying capacity, and land classification, etc. are approximate. Prospective buyers are chargeable with and expected to conduct their own independent investigation of the information and the property and to rely only on those results. Sellers reserve the right to accept or reject any and all offers without liability to any buyer or cooperating broker.

Maps are provided for illustration purposes only, the accuracy is not warranted. Parcels on interactive maps are not adjusted to match aerial backgrounds. This information is for reference purposes only and is not a legal document. Data maps contain errors. The seller and seller's agent are making known to all potential buyers that there may be variations between the location of the existing fence lines and the legal description of the deeded property. Seller and seller's agent make no warranties with regard to the location of the fence lines in relationship to the deeded property lines, nor does the Seller make any warranties or representations with regard to the specific acreage contained within the fenced property lines. Seller is selling the property in an "as is" condition, which includes the location of the fences as they exist. Boundaries shown on the accompanying maps are approximate, based on county parcel data. The maps are not to scale. The accuracy of the maps is not guaranteed. Prospective buyers are encouraged to verify fence lines, deeded property lines and acreages using a licensed surveyor at their own expense.

Mossy Oak Properties - Mississippi Valley Real Estate

W1099 280th Avenue

Plum City, WI 54761

(651) 324-1147

<https://mississippivalleyre.com>
