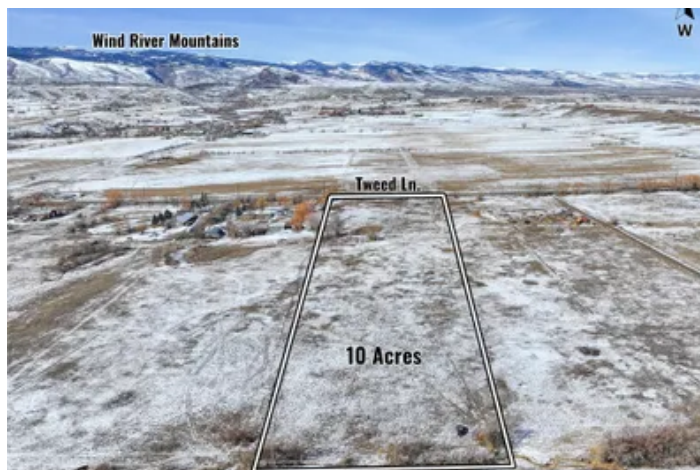
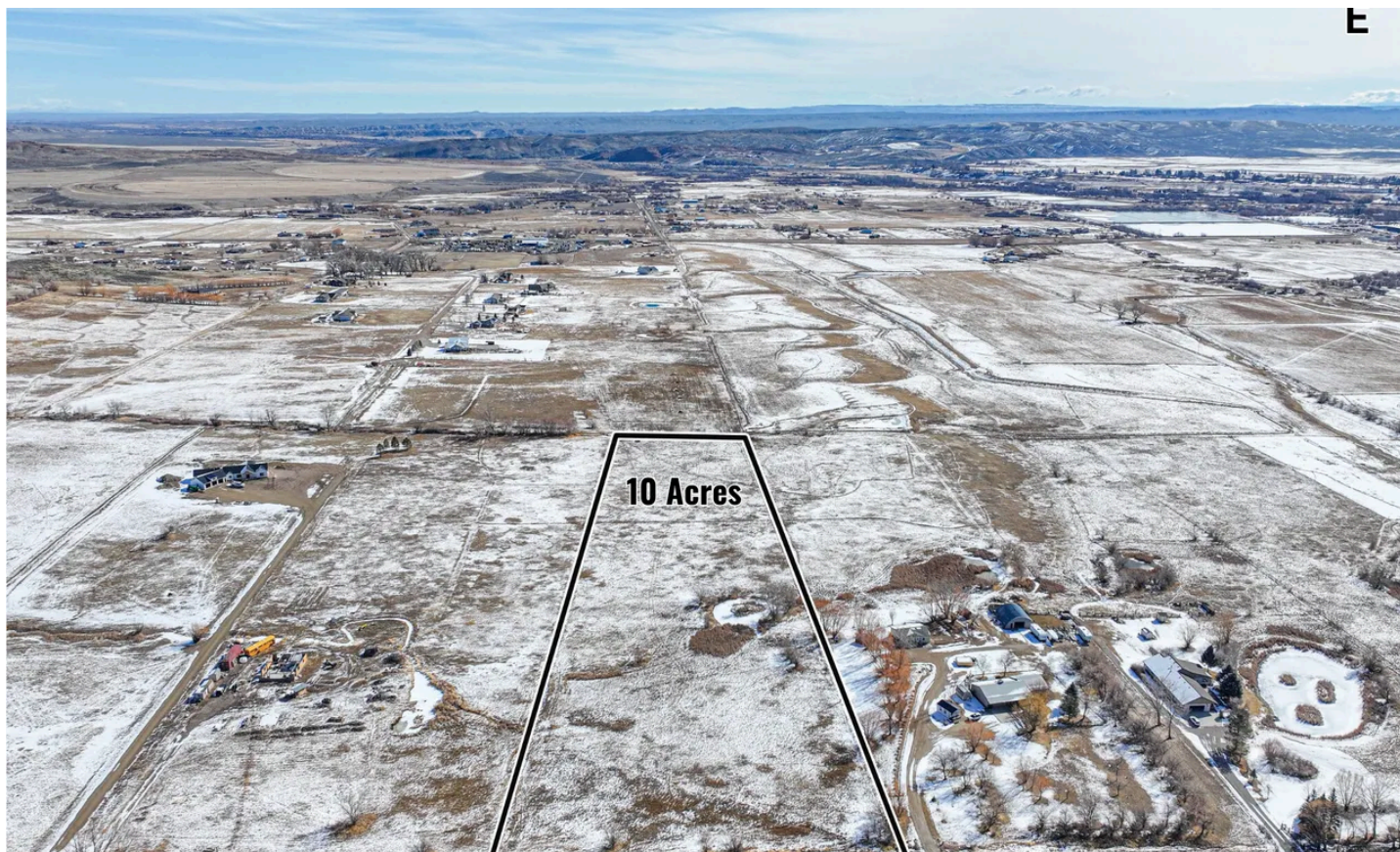


Tweed Ln - 9 acres - Fremont County
0 Tweed Ln
Lander, WY 82520

\$199,900
9.970± Acres
Fremont County



Tweed Ln - 9 acres - Fremont County
Lander, WY / Fremont County

SUMMARY

Address

0 Tweed Ln

City, State Zip

Lander, WY 82520

County

Fremont County

Type

Recreational Land, Undeveloped Land

Latitude / Longitude

42.857707 / -108.742713

Acreage

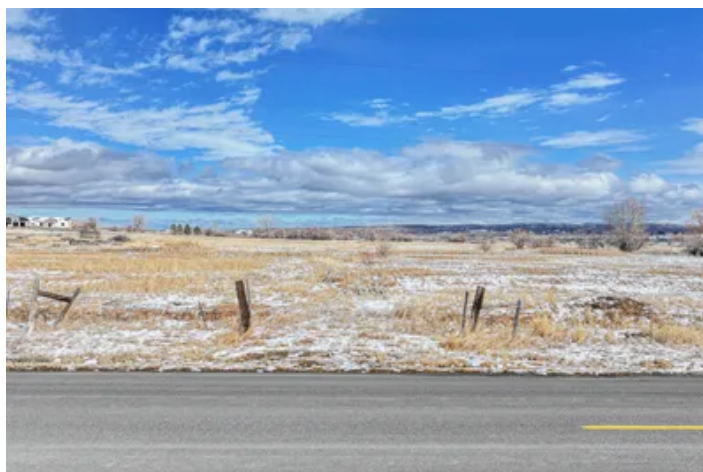
9.970

Price

\$199,900

Property Website

<https://www.mossyoakproperties.com/property/tweed-ln-9-acres-fremont-county-fremont-wyoming/78113/>



Tweed Ln - 9 acres - Fremont County
Lander, WY / Fremont County

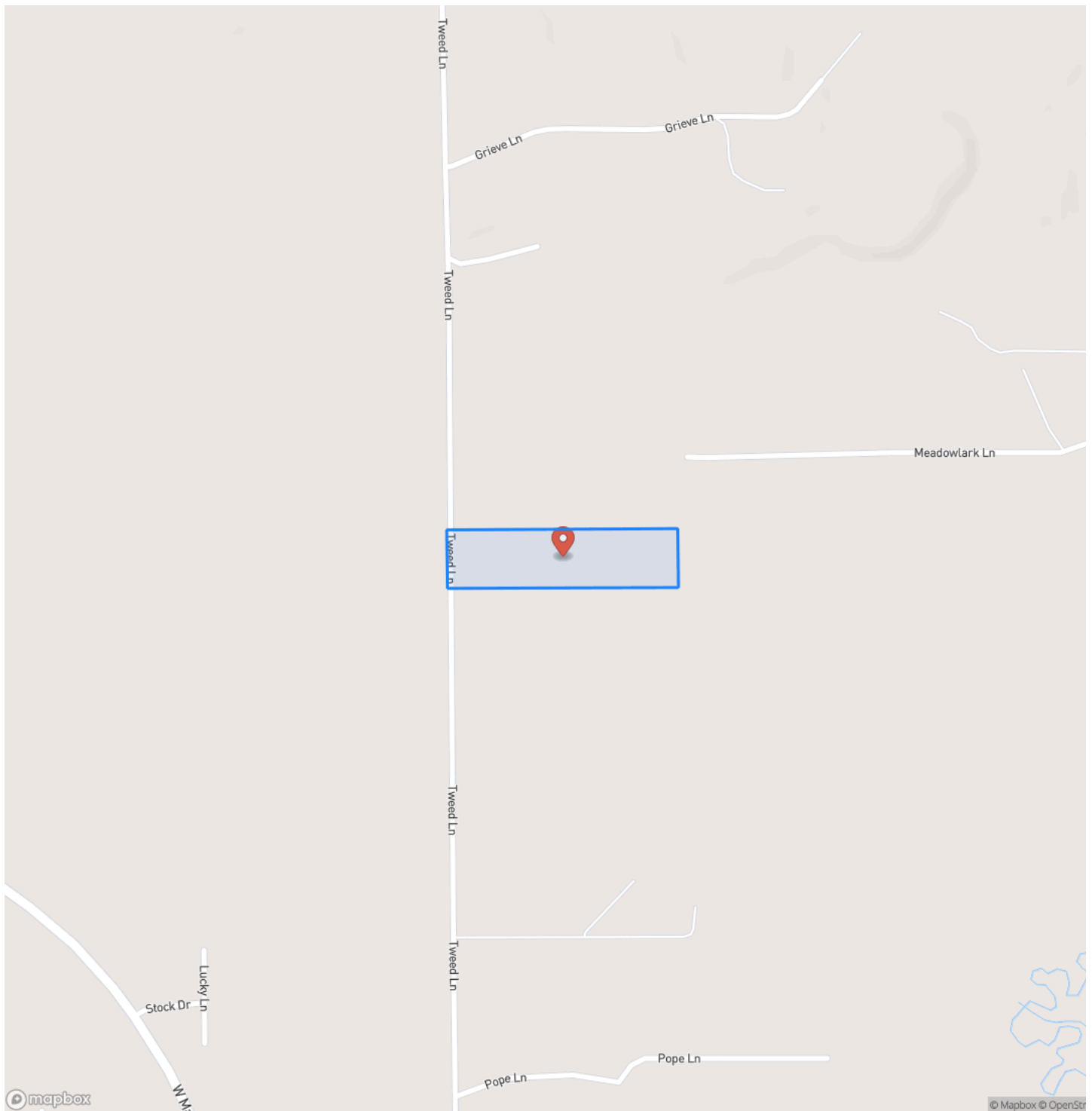
PROPERTY DESCRIPTION

Land for sale in Fremont County, WY. Situated along Tweed Ln. on the outskirts of Lander, this 9.97-acre property offers rural living yet close to all of the conveniences of town. The land offers a small pond, mostly level topography, and awesome views of the Wind River Mountains. Do not miss the opportunity to purchase a great appreciating asset!

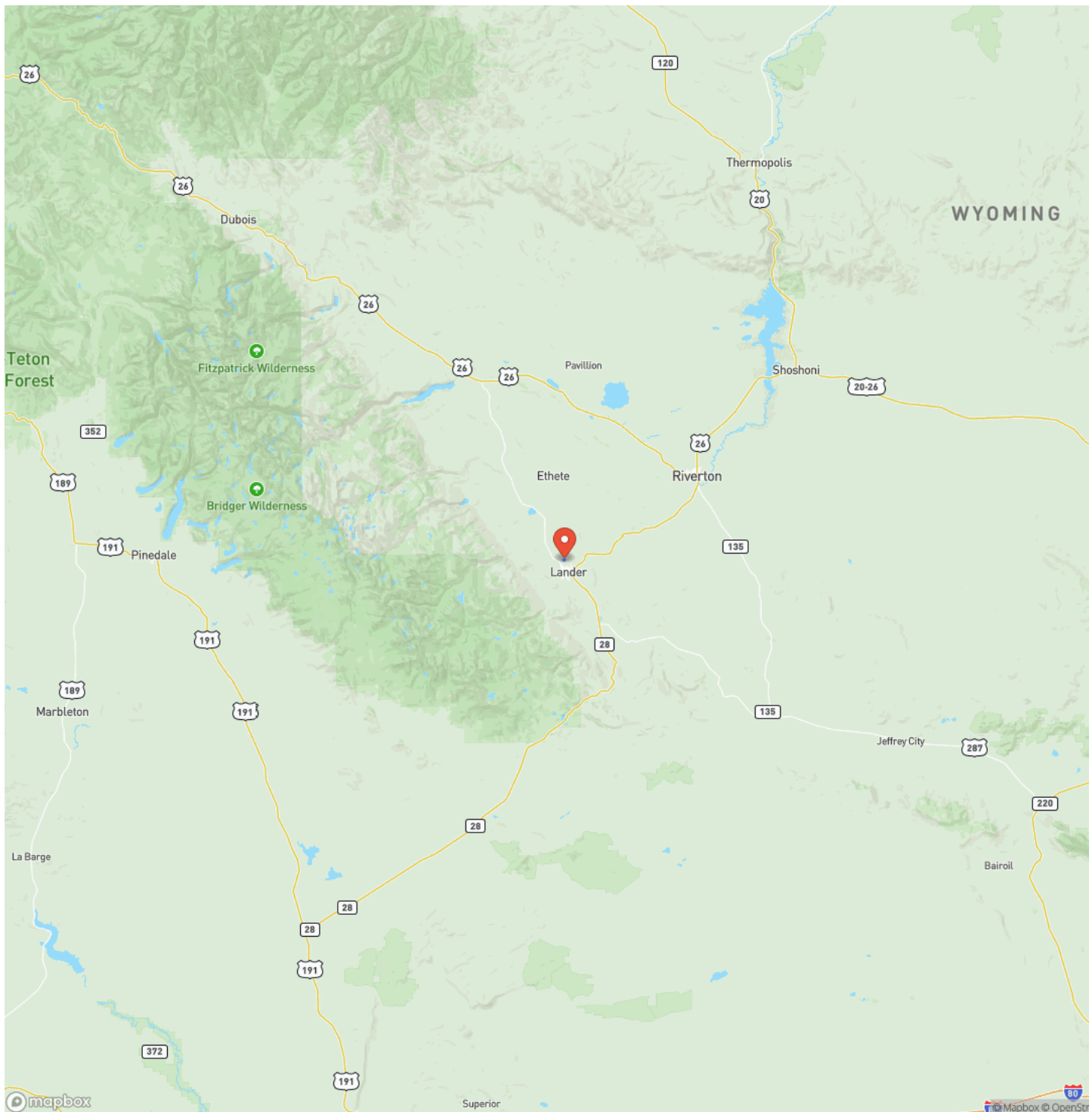
Tweed Ln - 9 acres - Fremont County
Lander, WY / Fremont County



Locator Map



Locator Map



Satellite Map



Tweed Ln - 9 acres - Fremont County
Lander, WY / Fremont County

LISTING REPRESENTATIVE

For more information contact:



Representative

Rick Swain

Mobile

918-527-3946

Office

(307) 306-4101

Email

rswain@mossyoakproperties.com

Address

City / State / Zip

Lander, WY 82801

NOTES

[illegible]

MORE INFO ONLINE:

www.mossoakproperties.com/land-for-sale/ohio/

[illegible]

DISCLAIMERS

Information in this brochure is provided solely for information purposes and does not constitute an offer to sell or advertise real estate outside the states in which broker or agent licensed. The information presented has been obtained from sources deemed to be reliable, but is not guaranteed or warranted by the agent, broker, or the sellers of these properties. This offering is subject to errors, omissions, prior sale, price change, correction or withdrawal from the market without notice. All references to age, square footage, income, expenses, acreage, carrying capacity, and land classification, etc. are approximate. Prospective buyers are chargeable with and expected to conduct their own independent investigation of the information and the property and to rely only on those results. Sellers reserve the right to accept or reject any and all offers without liability to any buyer or cooperating broker.

Maps are provided for illustration purposes only, the accuracy is not warranted. Parcels on interactive maps are not adjusted to match aerial backgrounds. This information is for reference purposes only and is not a legal document. Data maps contain errors. The seller and seller's agent are making known to all potential buyers that there may be variations between the location of the existing fence lines and the legal description of the deeded property. Seller and seller's agent make no warranties with regard to the location of the fence lines in relationship to the deeded property lines, nor does the Seller make any warranties or representations with regard to the specific acreage contained within the fenced property lines. Seller is selling the property in an "as is" condition, which includes the location of the fences as they exist. Boundaries shown on the accompanying maps are approximate, based on county parcel data. The maps are not to scale. The accuracy of the maps is not guaranteed. Prospective buyers are encouraged to verify fence lines, deeded property lines and acreages using a licensed surveyor at their own expense.

Mossy Oak Properties Bauer Realty & Auctions
PO BOX 896
Pickerington, OH 43147
(614) 949-6764
www.mossyoakproperties.com/land-for-sale/ohio/

