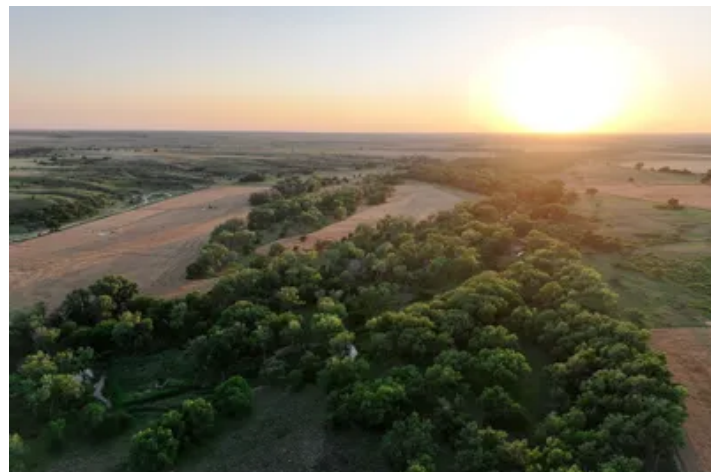


**160 Acres of Whitetail & Turkey Hunting Along The
Saline River**
00000 County Rd
Ellis, KS 67637

\$479,680
160± Acres
Ellis County



160 Acres of Whitetail & Turkey Hunting Along The Saline River Ellis, KS / Ellis County

SUMMARY

Address

00000 County Rd

City, State Zip

Ellis, KS 67637

County

Ellis County

Type

Farms, Hunting Land, Ranches

Latitude / Longitude

39.092054 / -99.514447

Taxes (Annually)

493

Dwelling Square Feet

0

Acreage

160

Price

\$479,680

Property Website

<https://redcedarland.com/detail/160-acres-of-whitetail-turkey-hunting-along-the-saline-river-ellis-kansas/57380/>



160 Acres of Whitetail & Turkey Hunting Along The Saline River Ellis, KS / Ellis County

PROPERTY DESCRIPTION

160 Acres of Whitetail & Turkey Hunting Along The Saline River

Property is a full 160 acres in Unit 3, which legally qualifies for multiple landowner tenant tags

Located more than a half mile off a county road and only accessible via a private entrance is this 160-acre Kansas deer and turkey hunting mecca. Nestled in the heart of the Saline River basin, best known for being one of the top-producing big buck river bottoms in all of Kansas, this property has been carefully managed and provides all of the necessary ingredients to grow and hold mature bucks. Featuring nearly a half mile of mature Saline River timber, lush agricultural fields perfect for food plots, deep overgrown cuts for additional bedding, and steep elevation changes providing some of the most breathtaking views Kansas has to offer, this property is a must see for the trophy deer hunter.

Property Overview

Located 1/2 mile West of 150th Ave and 1/2 mile South of Saline River Road in Ellis County, the main entrance to the property is accessible via a 1/2 mile private road leading to the South property line. Upon entering the property, you'll quickly realize you're in deer and turkey hunting heaven. Look North into the distance and your eye will be drawn to the largest portion of the river bottom with mature timber spanning nearly 300 yards wide! This area serves as the heaviest bedding area for the deer and is also a popular roosting spot for the turkeys. As you scan to the West, multiple agricultural fields, tucked up against two additional timber rows, come into view. Unique to The Saline River Sanctuary, these two additional mature timber rows allow you to successfully hunt and harvest mature bucks near the food sources, without ever stepping foot in the bedding area.

Top producing farms, like The Saline River Sanctuary, almost always feature great access where a hunter can enter and exit their stands and blinds undetected. With prevailing Westerly winds, and a South Property line entrance paired with over 100 foot bluffs on the West side of the property, this farm provides the perfect balance of being far enough away from the prime bedding areas but still just a short undetected walk into the best stand and blind locations. The bluffs also produce a picturesque view of the river bottom fields and create two giant ravines that lead South up off the river. These are big buck highways, specifically during the rut as deer transition throughout the property, allowing the next owner to have multiple hunting opportunities, regardless of the wind direction.

Improvements

As good as The Saline River Sanctuary is today, it is only going to get better in the future. The current owners have invested in the deer and turkey population in a variety of ways. Cattle production was removed off the farm multiple years ago, improving the natural habitat, seclusion, and thermal cover for the wildlife. Two Texas Wildlife Feeders have been used to feed high protein deer feed year-round, ensuring maximum antler growth and herd health for the deer. Two water troughs have been installed creating multiple water sources for the wildlife, and over 350 fruit and thermal cover trees were planted to improve the bedding and food sources across the farm.

If you're looking to experience Kansas whitetail and turkey hunting at its finest, on a property with hard-to-find features, such as premier access, vast elevation changes, mature timber, multiple agricultural fields, and heavy canyon draws, suited for bow or rifle hunting, all located on the world-renowned Saline River, contact Greg Bieker with Red Cedar Land Company to schedule your private showing.

Included In The Sale

- 3,000lb All Seasons Spin Feeder
- 2,000lb Texas Wildlife Gravity Feeder
- 2 In-Ground Water Troughs
- Multiple Established Mineral Sites

Property Features



- Trophy Whitetail Deer Hunting
- Turkey Hunting
- Quail Hunting
- Mature Timber
- Vast Elevation Changes
- Multiple Agricultural Fields
- Heavy Canyon Draws
- 25 Minutes From Hays, KS
- Multiple Established Mineral Sites

Driving Directions

From Ellis, Kansas located at Exit 145 on Interstate 70, travel North on Ellis Avenue for 2.5 miles, follow the curve in the road to the East for 1 mile and then continue North for 6 miles to Wiles Road. Turn East on Wiles Road and travel 1.75 miles until the road curves back to the North. Follow the curve for 1/2 mile where you'll meet the private entrance on the West side of the road. The trail will continue 1/2 mile Northwest where you'll meet the Southern entrance to the property.

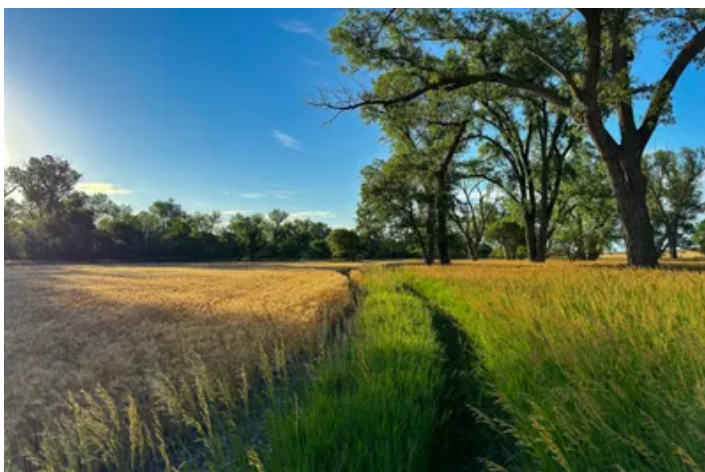
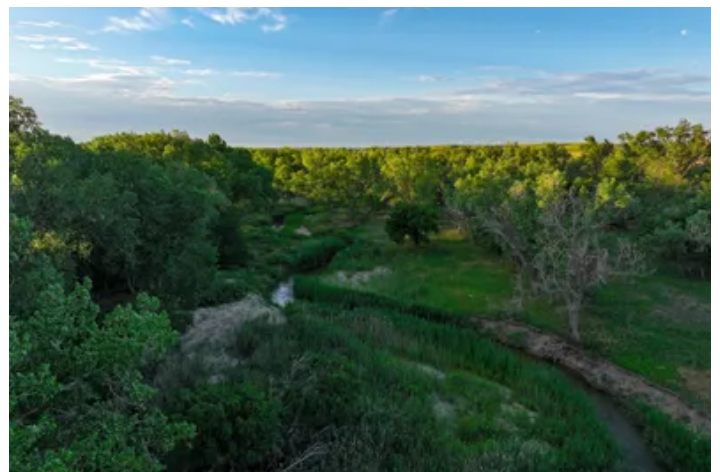
- 25 Minutes From Hays, Kansas

- 3 Hours From Wichita, Kansas

- 4.5 Hours From Denver, Colorado

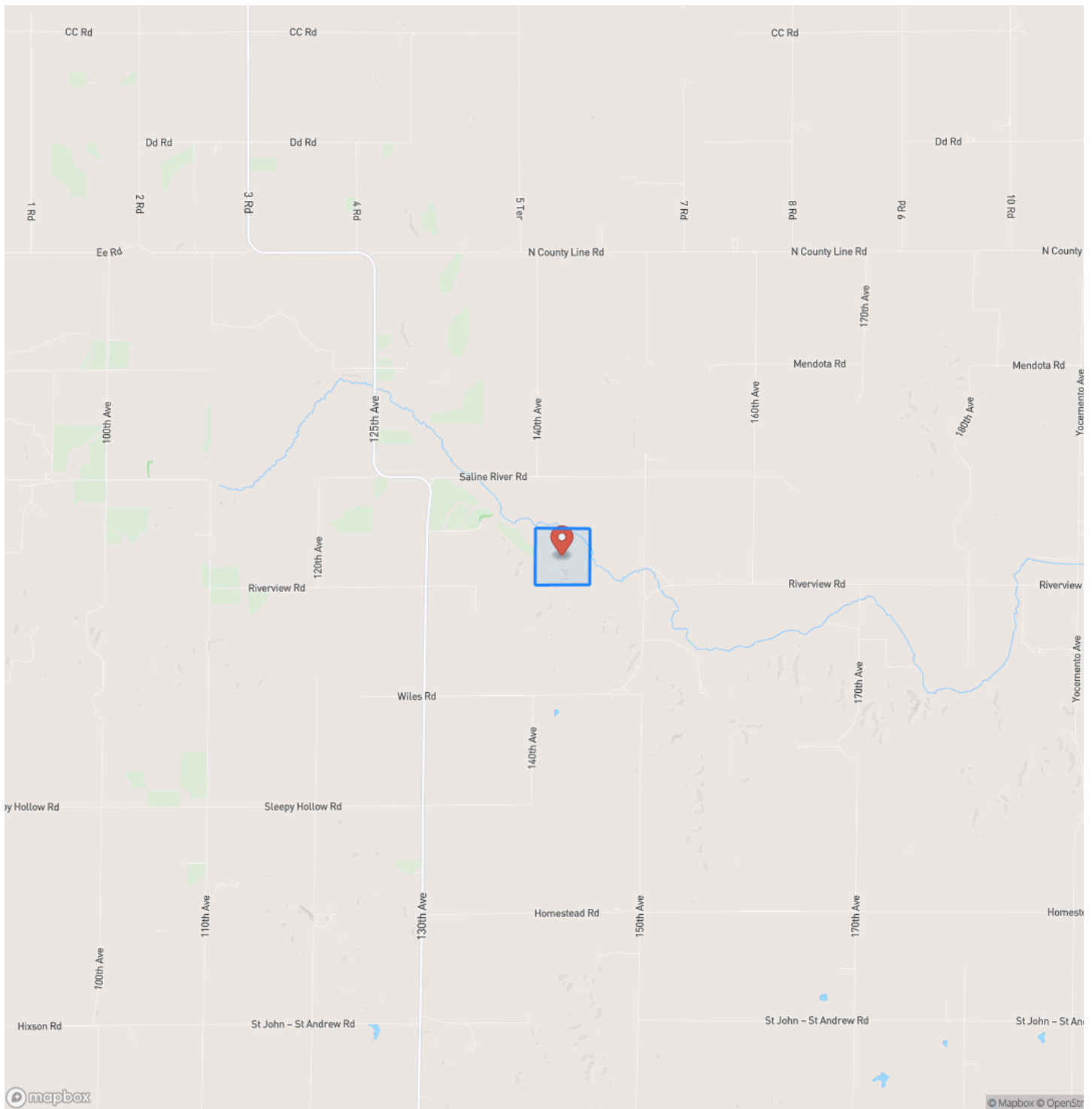


160 Acres of Whitetail & Turkey Hunting Along The Saline River
Ellis, KS / Ellis County



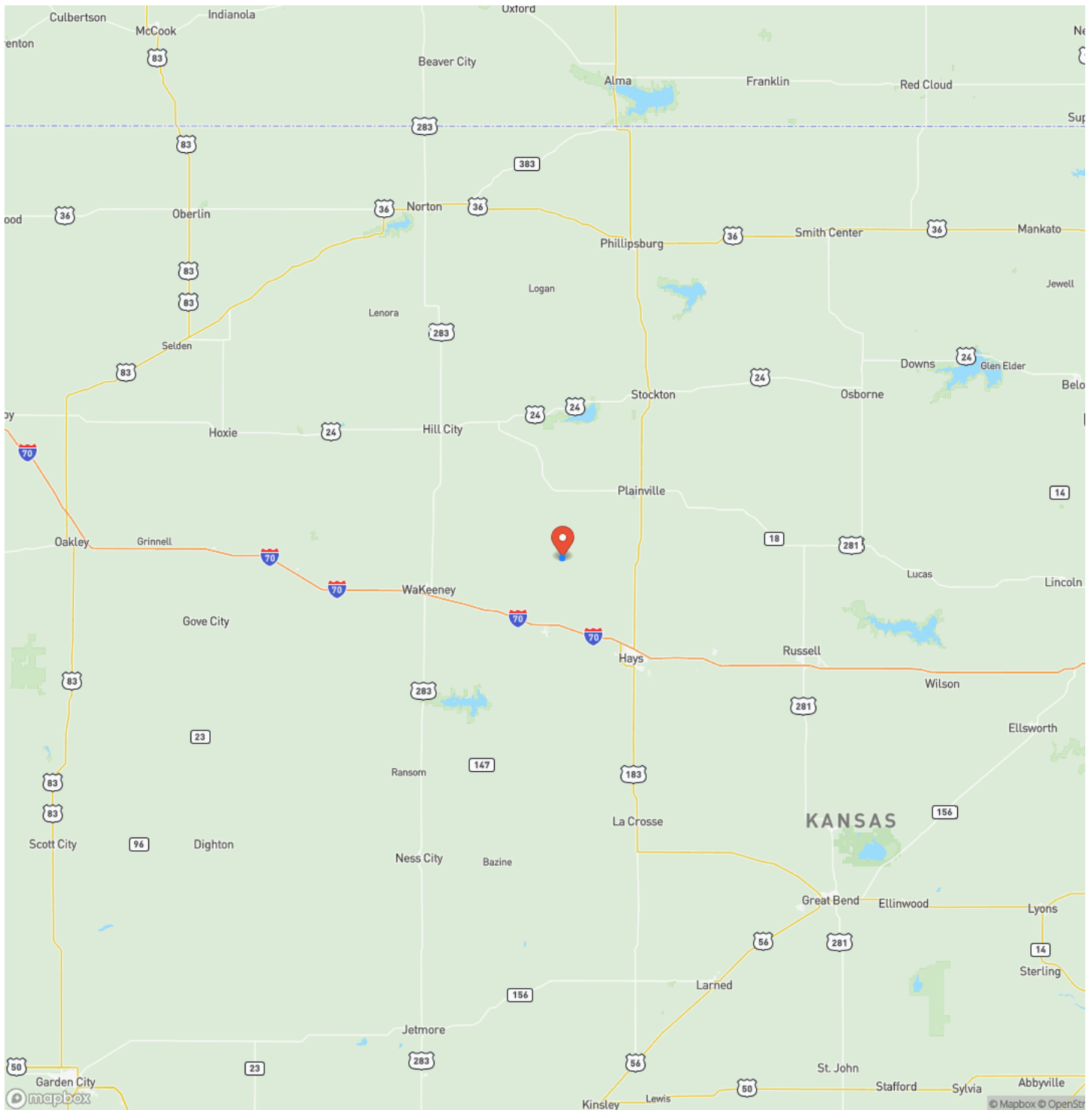
160 Acres of Whitetail & Turkey Hunting Along The Saline River
Ellis, KS / Ellis County

Locator Map



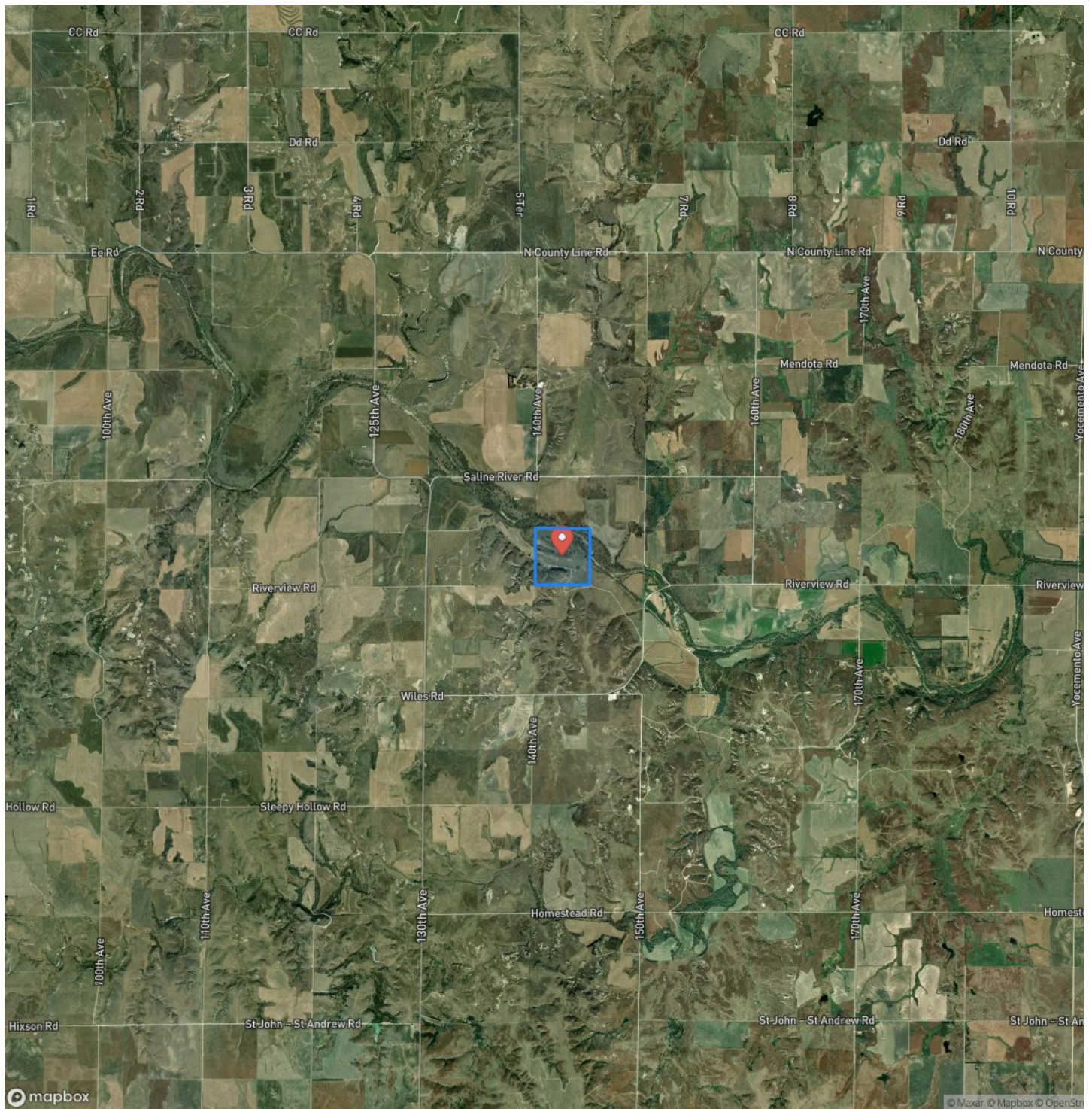
**160 Acres of Whitetail & Turkey Hunting Along The Saline River
Ellis, KS / Ellis County**

Locator Map



160 Acres of Whitetail & Turkey Hunting Along The Saline River
Ellis, KS / Ellis County

Satellite Map



160 Acres of Whitetail & Turkey Hunting Along The Saline River Ellis, KS / Ellis County

LISTING REPRESENTATIVE

For more information contact:



Representative

Greg Bieker

Mobile

(620) 639-3337

Email

greg@redcedarland.com

Address

City / State / Zip

NOTES

[illegible]

This image shows a blank sheet of white paper with horizontal ruling lines. The lines are evenly spaced and run across the width of the page. There are no margins, text, or other markings on the paper.



redcedarland.com

DISCLAIMERS

Information in this brochure is provided solely for information purposes and does not constitute an offer to sell or advertise real estate outside the states in which broker or agent licensed. The information presented has been obtained from sources deemed to be reliable, but is not guaranteed or warranted by the agent, broker, or the sellers of these properties. This offering is subject to errors, omissions, prior sale, price change, correction or withdrawal from the market without notice. All references to age, square footage, income, expenses, acreage, carrying capacity, and land classification, etc. are approximate. Prospective buyers are chargeable with and expected to conduct their own independent investigation of the information and the property and to rely only on those results. Sellers reserve the right to accept or reject any and all offers without liability to any buyer or cooperating broker.

Maps are provided for illustration purposes only, the accuracy is not warranted. Parcels on interactive maps are not adjusted to match aerial backgrounds. This information is for reference purposes only and is not a legal document. Data maps contain errors. The seller and seller's agent are making known to all potential buyers that there may be variations between the location of the existing fence lines and the legal description of the deeded property. Seller and seller's agent make no warranties with regard to the location of the fence lines in relationship to the deeded property lines, nor does the Seller make any warranties or representations with regard to the specific acreage contained within the fenced property lines. Seller is selling the property in an "as is" condition, which includes the location of the fences as they exist. Boundaries shown on the accompanying maps are approximate, based on county parcel data. The maps are not to scale. The accuracy of the maps is not guaranteed. Prospective buyers are encouraged to verify fence lines, deeded property lines and acreages using a licensed surveyor at their own expense.



Red Cedar Land Co.
2 NE 10th ave
Saint John, KS 67576
(620) 546-3746
redcedarland.com

