

School House Rd NW - 4 acres
9672 School House Rd NW
Canal Winchester, OH 43110

\$450,000
4.87± Acres
Fairfield County



School House Rd NW - 4 acres
Canal Winchester, OH / Fairfield County

SUMMARY

Address

9672 School House Rd NW null

City, State Zip

Canal Winchester, OH 43110

County

Fairfield County

Type

Residential Property

Latitude / Longitude

39.873348 / -82.788705

Dwelling Square Feet

1,456

Bedrooms / Bathrooms

3 / 2

Acreage

4.87

Price

\$450,000



School House Rd NW - 4 acres
Canal Winchester, OH / Fairfield County

PROPERTY DESCRIPTION

Welcome to this well-maintained ranch home situated on 4.87 acres in Fairfield County, offering a balance of comfortable living and functional space both inside and out. Built in 1971, this 3-bedroom, 2-bath home features a practical layout with a primary suite that includes a private ensuite bath, along with a spacious second full bathroom in the hallway complete with a double vanity.

The home offers 1,456 square feet of living space, plus a large full basement that provides excellent storage or the opportunity to finish an additional living area to suit your needs. Recent updates include a roof and central A/C system, both less than 10 years old, along with a new well pump and check valve installed in 2025, and new garage doors in 2026.

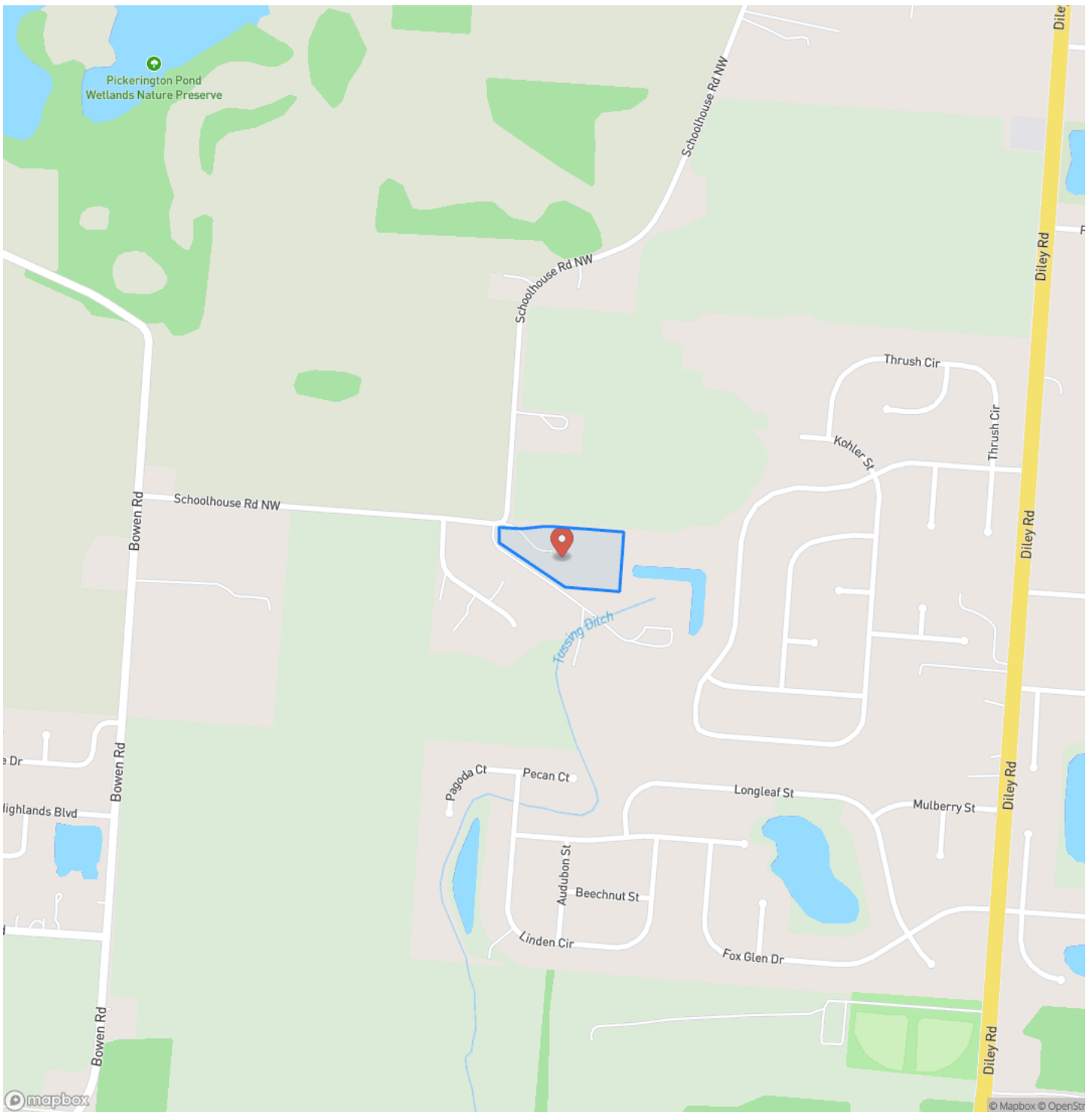
Outside, the property is set up for versatility and usability. A three-bay, 4-car garage provides ample parking and workspace, while the 40x80 pole barn offers significant storage or potential for equipment, hobbies, or livestock. Properties of this size in the area rarely hit the market and present a great opportunity for someone seeking more space while still enjoying a neighborhood setting.

Utilities include well water, septic system, gas heat, and central air. Located within the Pickerington Local School District, this property offers a desirable combination of rural space and convenience. Whether you're looking for a homestead, hobby farm, or simply room to spread out, this property is ready to meet your needs.

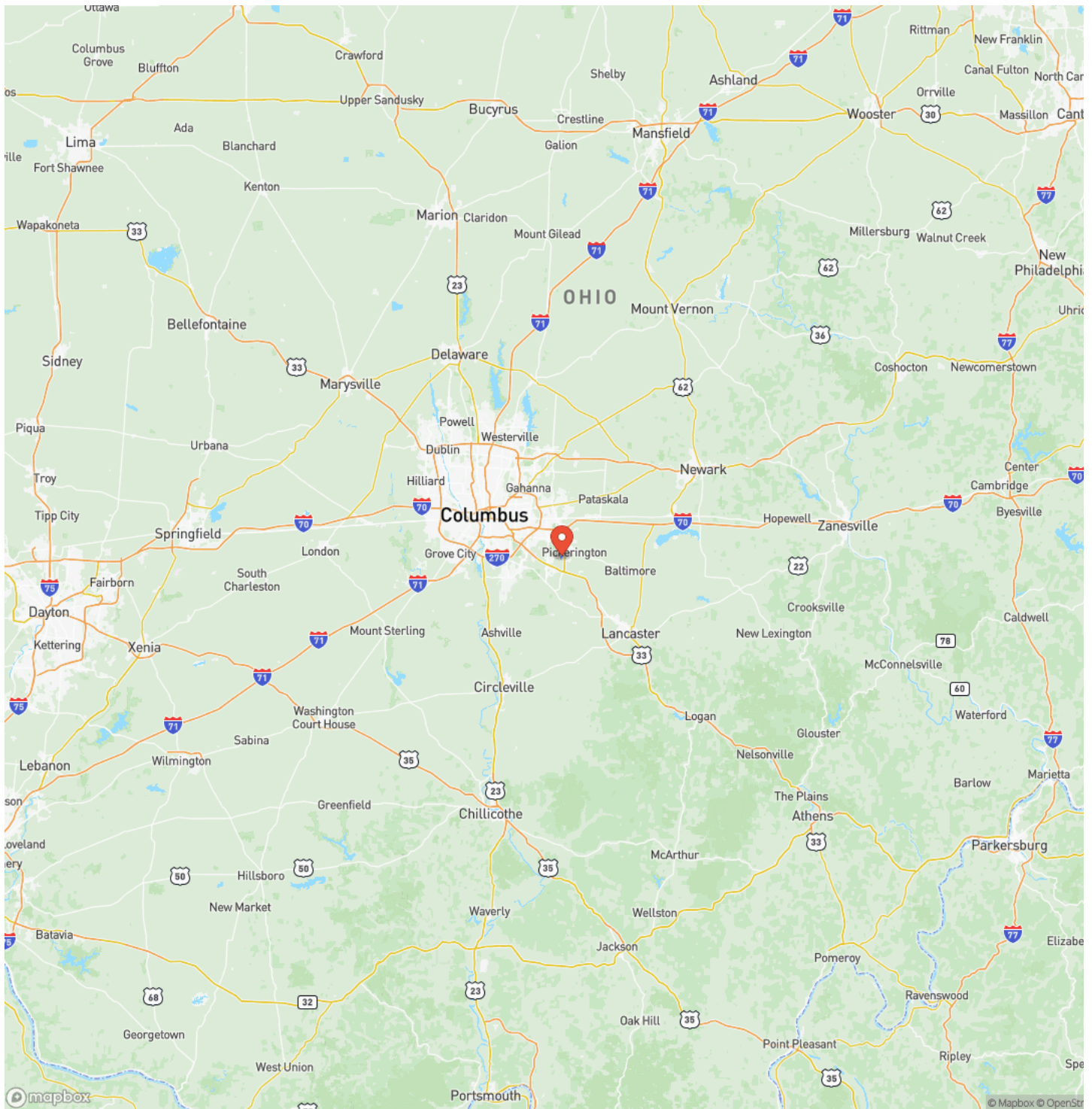
School House Rd NW - 4 acres
Canal Winchester, OH / Fairfield County



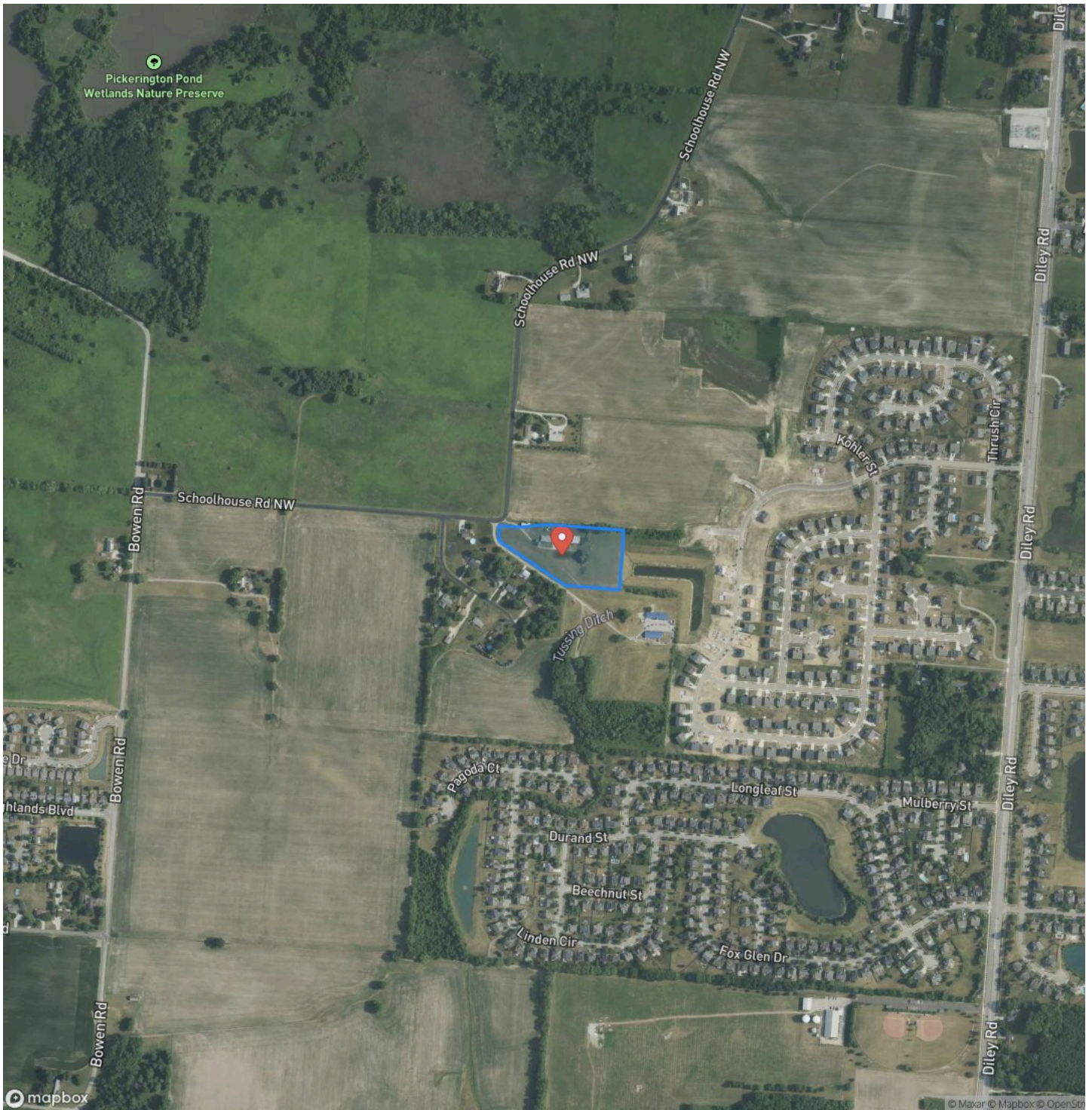
Locator Map



Locator Map



Satellite Map



DISCLAIMERS

Information in this brochure is provided solely for information purposes and does not constitute an offer to sell or advertise real estate outside the states in which broker or agent licensed. The information presented has been obtained from sources deemed to be reliable, but is not guaranteed or warranted by the agent, broker, or the sellers of these properties. This offering is subject to errors, omissions, prior sale, price change, correction or withdrawal from the market without notice. All references to age, square footage, income, expenses, acreage, carrying capacity, and land classification, etc. are approximate. Prospective buyers are chargeable with and expected to conduct their own independent investigation of the information and the property and to rely only on those results. Sellers reserve the right to accept or reject any and all offers without liability to any buyer or cooperating broker.

Maps are provided for illustration purposes only, the accuracy is not warranted. Parcels on interactive maps are not adjusted to match aerial backgrounds. This information is for reference purposes only and is not a legal document. Data maps contain errors. The seller and seller's agent are making known to all potential buyers that there may be variations between the location of the existing fence lines and the legal description of the deeded property. Seller and seller's agent make no warranties with regard to the location of the fence lines in relationship to the deeded property lines, nor does the Seller make any warranties or representations with regard to the specific acreage contained within the fenced property lines. Seller is selling the property in an "as is" condition, which includes the location of the fences as they exist. Boundaries shown on the accompanying maps are approximate, based on county parcel data. The maps are not to scale. The accuracy of the maps is not guaranteed. Prospective buyers are encouraged to verify fence lines, deeded property lines and acreages using a licensed surveyor at their own expense.

Mossy Oak Properties Bauer Realty & Auctions
PO BOX 896
Pickerington, OH 43147
(614) 829-7070
<https://www.mossoakproperties.com/>

