

**Itawamba County - 206 Acres for Sale in Tremont MS  
with Camphouse, Shop, Splunge Creek Frontage, Food  
Plots, and Hunting Land**  
731 Wright Road  
Tremont, MS 38876

**\$820,000**  
206± Acres  
Itawamba County



**Itawamba County - 206 Acres for Sale in Tremont MS with Camphouse, Shop, Splunge Creek Frontage, Food Plots, and Hunting Land**  
**Tremont, MS / Itawamba County**

**SUMMARY**

**Address**

731 Wright Road null

**City, State Zip**

Tremont, MS 38876

**County**

Itawamba County

**Type**

Recreational Land, Hunting Land, Timberland, Residential Property

**Latitude / Longitude**

34.107188 / -88.224294

**Dwelling Square Feet**

2,000

**Bedrooms / Bathrooms**

3 / 2

**Acreage**

206

**Price**

\$820,000

**Property Website**

<https://www.mossoakproperties.com/property/itawamba-county-206-acres-for-sale-in-tremont-ms-with-camphouse-shop-splunge-creek-frontage-food-plots-and-hunting-land/itawamba/mississippi/101182/>



## Itawamba County - 206 Acres for Sale in Tremont MS with Camphouse, Shop, Splunge Creek Frontage, Food Plots, and Hunting Land

Tremont, MS / Itawamba County

---

### PROPERTY DESCRIPTION

#### **206± Acres for Sale in Tremont, MS with Camphouse, Shop, Splunge Creek, Food Plots, and Prime Hunting Land**

Welcome to **731 Wright Road, Tremont, MS 38876**, a rare chance to own **206± acres of hunting land for sale in Itawamba County, Mississippi**. This **turnkey Mississippi recreational property** features a well-appointed **2,000± square foot camphouse**, a **1,800± square foot shop**, mature hardwood timber, managed pine habitat, **Splunge Creek frontage**, more than 10 established food plots, planted oak groves, and an extensive internal trail system. For buyers searching for **land for sale in Tremont MS, hunting property in Northeast Mississippi**, or **Mississippi land with a camp house and shop**, this property offers an outstanding combination of habitat, improvements, access, and long-term stewardship.

This is a property built for enjoyment and designed for function. The land has been carefully managed for wildlife for decades and offers excellent habitat for **whitetail deer, wild turkey, and small game**. The majority of the tract is in mature hardwood timber, complemented by planted and thinned pines that have been managed with wildlife in mind. Splunge Creek adds natural beauty, water, and habitat diversity, while the established food plots and strategically planted oak groves help make this property a true turnkey hunting tract.

The gently rolling topography and highly walkable layout set this property apart from many larger tracts on the market. Whether you are riding trails, checking stands and cameras, working food plots, or simply enjoying the outdoors, the extensive internal trail system makes the property easy to use and easy to enjoy. This is the kind of **Mississippi hunting land** that works equally well for serious hunters, families, and buyers looking for a private recreational retreat.

The improvements are a major part of what makes this property so special. The **2,000± square foot camphouse** includes **3 bedrooms and 2 full baths**, along with **two kitchens** and **two laundry areas**, offering flexibility for family use, guests, or multiple parties during hunting season. A balcony overlooks the property, while the large patio and massive stone outdoor fireplace create an ideal setting for entertaining, relaxing, and making the most of time spent at camp.

The **1,800± square foot shop with roll-up doors** provides excellent storage and utility for tractors, ATVs, side-by-sides, tools, implements, hunting gear, and maintenance equipment. Properties offering this level of improvement are increasingly hard to find, especially in an area known for strong hunting, privacy, and easy access to nearby towns and attractions.

### **Property Highlights**

- **206± acres**
- **Tremont, Mississippi**
- **Itawamba County, MS**
- **Turnkey hunting and recreational property**
- **Splunge Creek frontage**
- **2,000± square foot camphouse**
- **3 bedrooms / 2 full baths**
- **Two kitchens**
- **Two laundry areas**
- **Balcony overlooking the property**
- **Large patio with massive stone outdoor fireplace**
- **1,800± square foot shop with roll-up doors**
- **Mature hardwood timber**
- **Managed planted and thinned pine timber**
- **10+ established food plots**
- **Planted oak groves**
- **Extensive internal trail system**
- **Gently rolling topography**
- **Highly walkable property**

- Excellent deer, turkey, and small game habitat
- Long history of wildlife management

## Location

This **Itawamba County land for sale** is conveniently located in Northeast Mississippi and is approximately:

- 12 miles from Fulton, MS
- 30 miles from Tupelo, MS
- 18 miles from Hamilton, AL
- 60 miles from Pickwick Lake

Whether you are looking for **hunting land for sale in Itawamba County, recreational land in Mississippi, deer hunting property near Tupelo**, or a **Mississippi legacy property with a camphouse, shop, creek, and food plots**, 731 Wright Road is a property that deserves serious consideration.

Email Fred Zepponi III at [fred@mossyoakproperties.com](mailto:fred@mossyoakproperties.com)

Office Phones [662 495 1121](tel:6624951121)



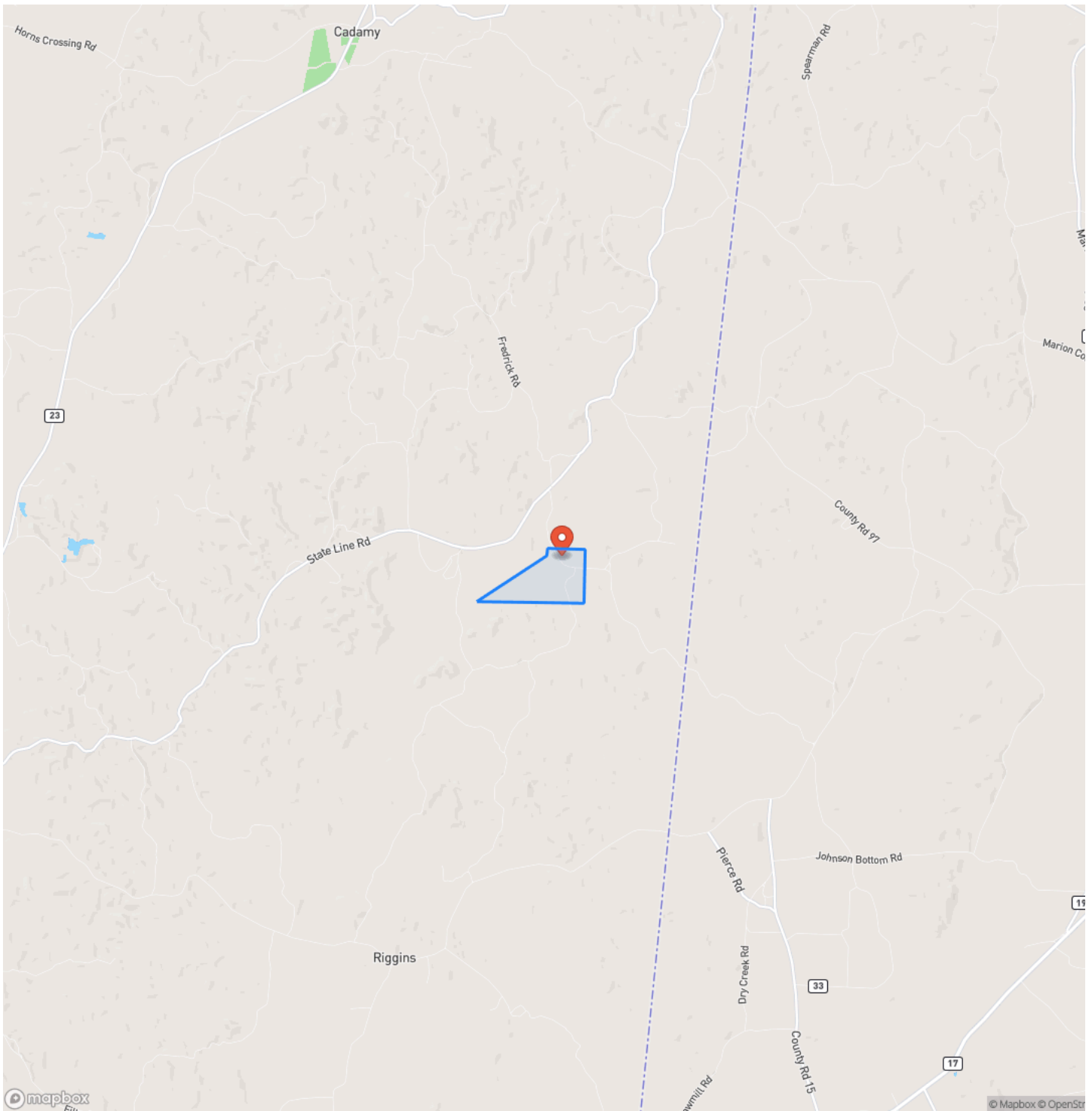
**Itawamba County - 206 Acres for Sale in Tremont MS with Camphouse, Shop, Splunge Creek Frontage, Food Plots, and Hunting Land**  
**Tremont, MS / Itawamba County**

---



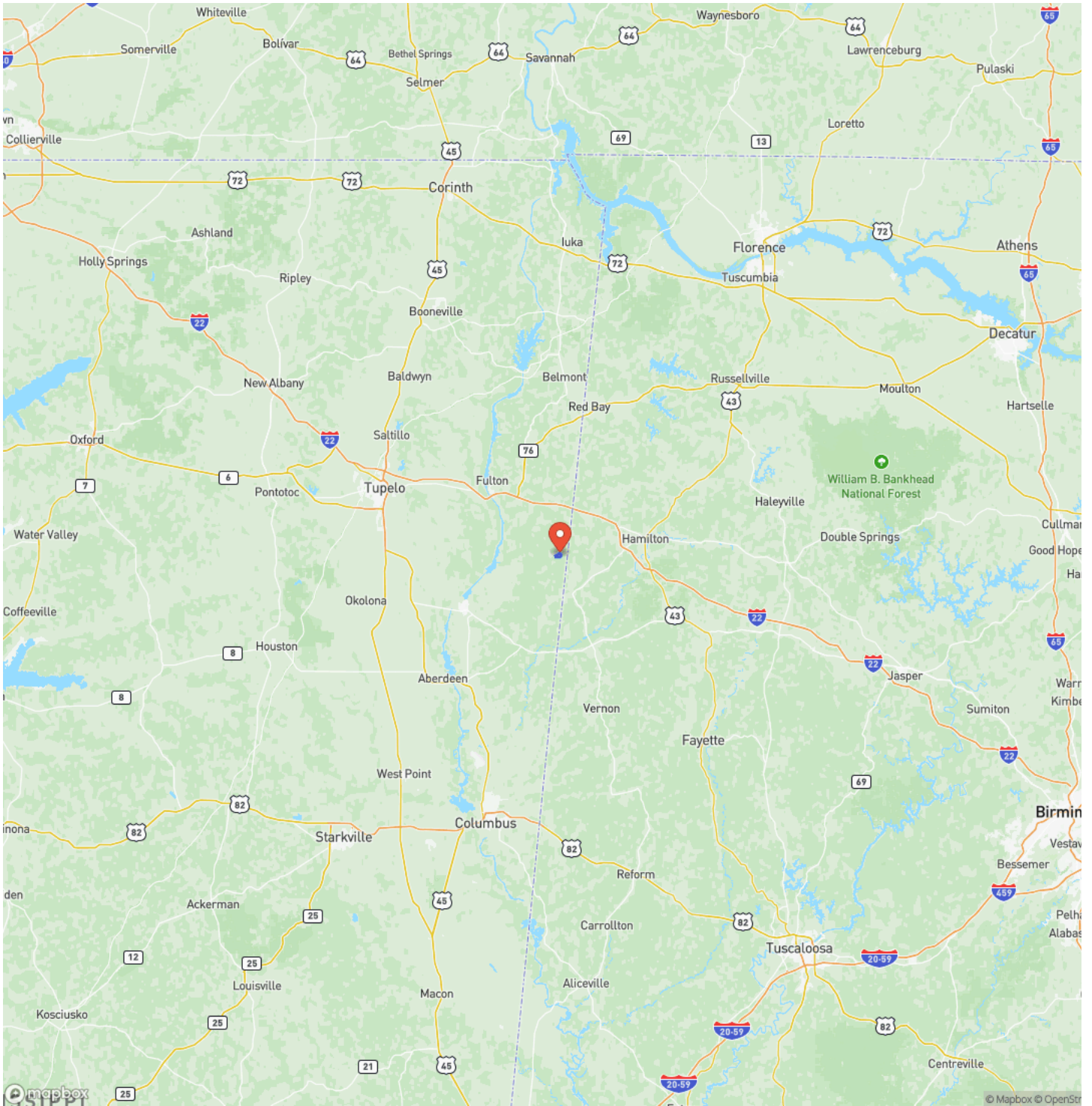
## Locator Map



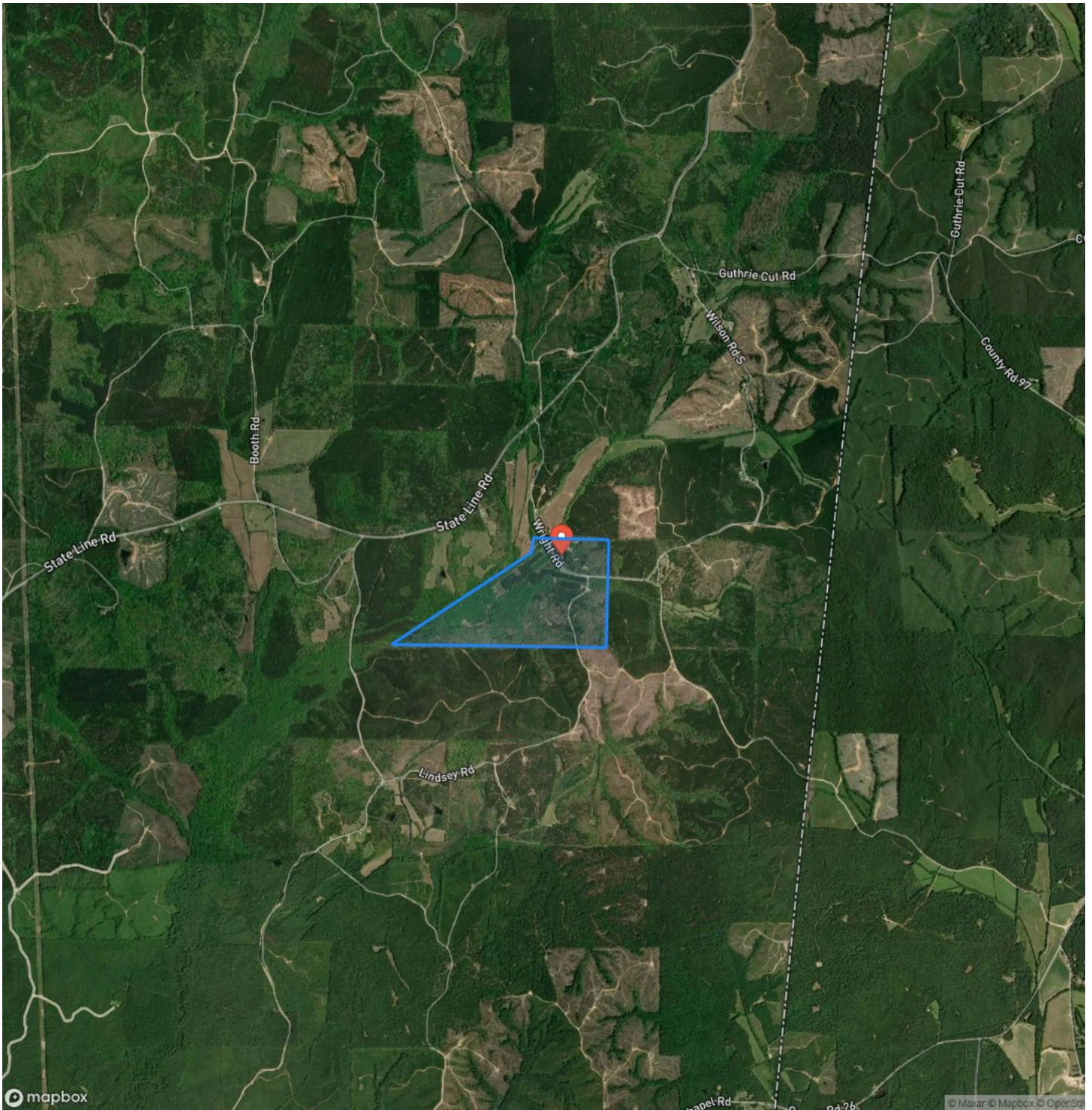


## **Locator Map**





## Satellite Map







## **DISCLAIMERS**

Information in this brochure is provided solely for information purposes and does not constitute an offer to sell or advertise real estate outside the states in which broker or agent licensed. The information presented has been obtained from sources deemed to be reliable, but is not guaranteed or warranted by the agent, broker, or the sellers of these properties. This offering is subject to errors, omissions, prior sale, price change, correction or withdrawal from the market without notice. All references to age, square footage, income, expenses, acreage, carrying capacity, and land classification, etc. are approximate. Prospective buyers are chargeable with and expected to conduct their own independent investigation of the information and the property and to rely only on those results. Sellers reserve the right to accept or reject any and all offers without liability to any buyer or cooperating broker.

Maps are provided for illustration purposes only, the accuracy is not warranted. Parcels on interactive maps are not adjusted to match aerial backgrounds. This information is for reference purposes only and is not a legal document. Data maps contain errors. The seller and seller's agent are making known to all potential buyers that there may be variations between the location of the existing fence lines and the legal description of the deeded property. Seller and seller's agent make no warranties with regard to the location of the fence lines in relationship to the deeded property lines, nor does the Seller make any warranties or representations with regard to the specific acreage contained within the fenced property lines. Seller is selling the property in an "as is" condition, which includes the location of the fences as they exist. Boundaries shown on the accompanying maps are approximate, based on county parcel data. The maps are not to scale. The accuracy of the maps is not guaranteed. Prospective buyers are encouraged to verify fence lines, deeded property lines and acreages using a licensed surveyor at their own expense.

---

**Mossy Oak Properties Bottomland Real Estate**

5795 Highway 45 Alt S

West Point, MS 39773

(662) 495-1121

<https://www.mossoakproperties.com/>

---

