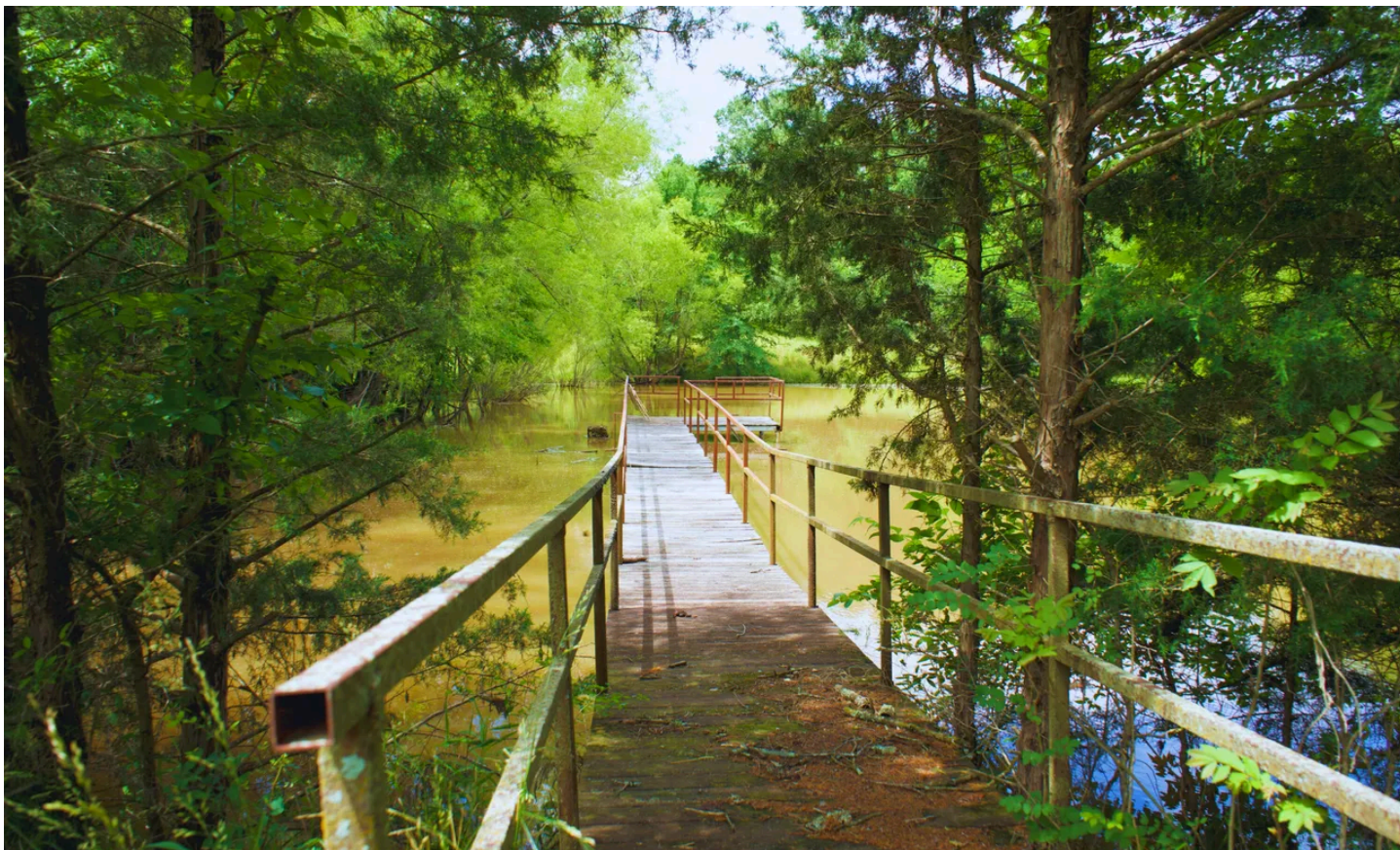


Featherwood Ranch
TBD Nelson Rd.
Soper, OK 74759

\$380,000
76± Acres
Choctaw County



Featherwood Ranch
Soper, OK / Choctaw County

SUMMARY

Address

TBD Nelson Rd.

City, State Zip

Soper, OK 74759

County

Choctaw County

Type

Recreational Land, Hunting Land, Ranches, Timberland, Farms

Latitude / Longitude

34.127665 / -95.773602

Taxes (Annually)

604

Acreage

76

Price

\$380,000

Property Website

<https://www.bartrealtyllc.com/property/featherwood-ranch-choctaw-oklahoma/82280/>



PROPERTY DESCRIPTION

General Description & Location-

Located just 13± miles northwest of Soper, OK, and 18± miles southwest of Antlers, this beautiful 76+/- ranch offers the perfect blend of open pasture, wooded terrain, and recreational opportunity. Set in beautiful Choctaw County, OK, this property features approximately 12± acres of open ground—mostly concentrated on the eastern side—while the remainder is covered in mature timber, providing excellent wildlife habitat and natural privacy.

Features-

Outdoor amenities include two ponds: one approximately half an acre in size, complete with a dock, and another smaller seasonal pond that holds water during wet periods. Whether you're fishing, relaxing by the water, or watching the wildlife, this ranch provides a serene outdoor setting.

Utilities-

Utilities are already in place, with electric and water access at two separate locations, making the land easily accessible and versatile for future improvements. The property has perimeter fencing, with some cross fencing around the homestead area. While the fencing is in fair condition, a few adjustments could significantly enhance its quality.

Improvements-

Improvements on the property include a 40'x50' metal shop building with electricity—ideal for equipment storage or a workspace—and a carport for additional covered storage. The main residence is a 1,092 sq ft home that, with some renovation, has the potential to become a charming ranch-style home. A small cabin is also located on the southwest corner of the property, though it holds little value and is likely best removed.

Hunting-

This property is a hunter's dream, with abundant deer sign, cover, and water. It offers excellent recreational hunting opportunities for whitetail deer, hogs, and waterfowl, making it a great weekend getaway or permanent rural retreat.

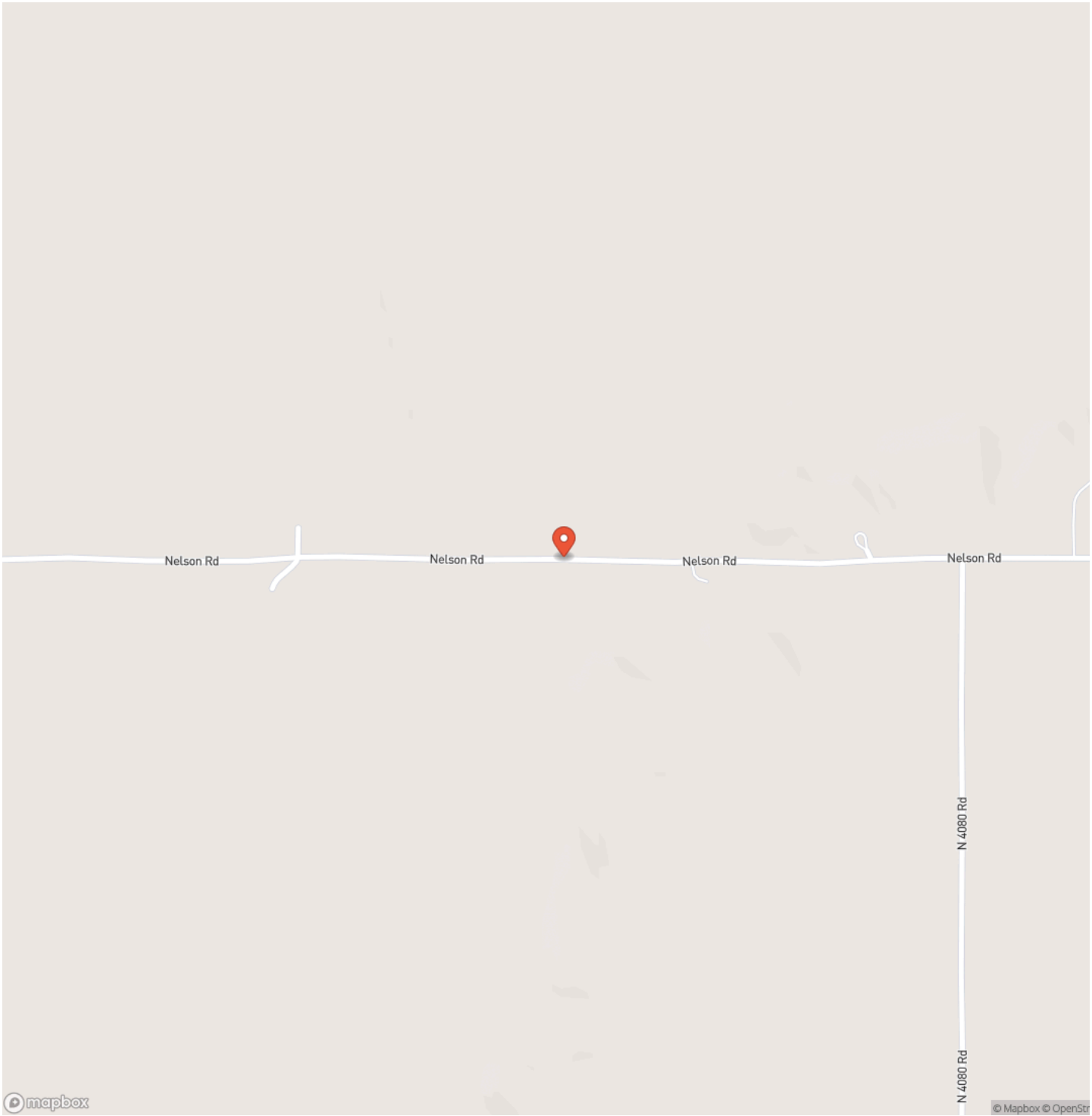
If you're looking for a versatile property with natural beauty, development potential, and outstanding recreational value, this one deserves a closer look.



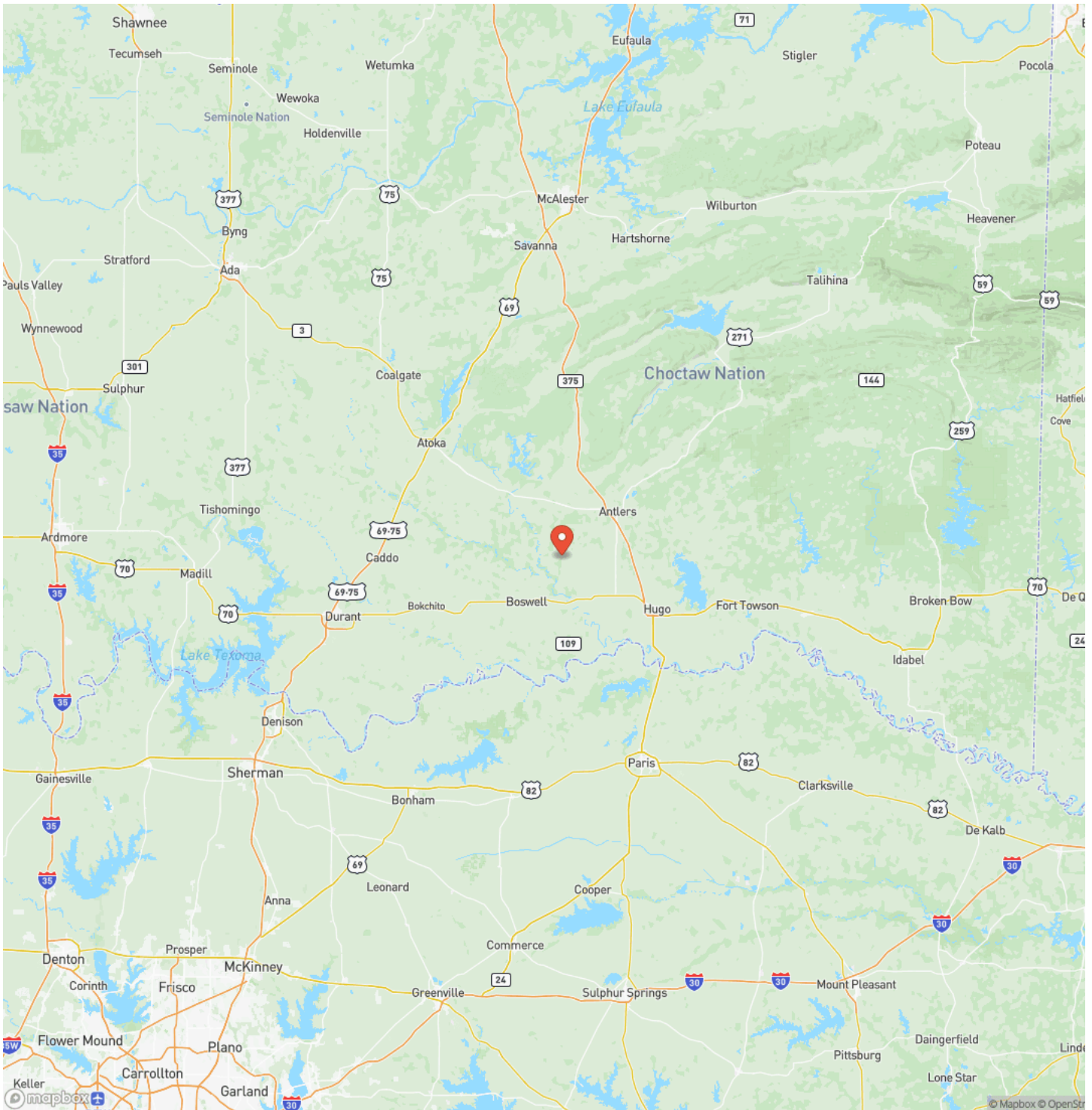
Featherwood Ranch
Soper, OK / Choctaw County



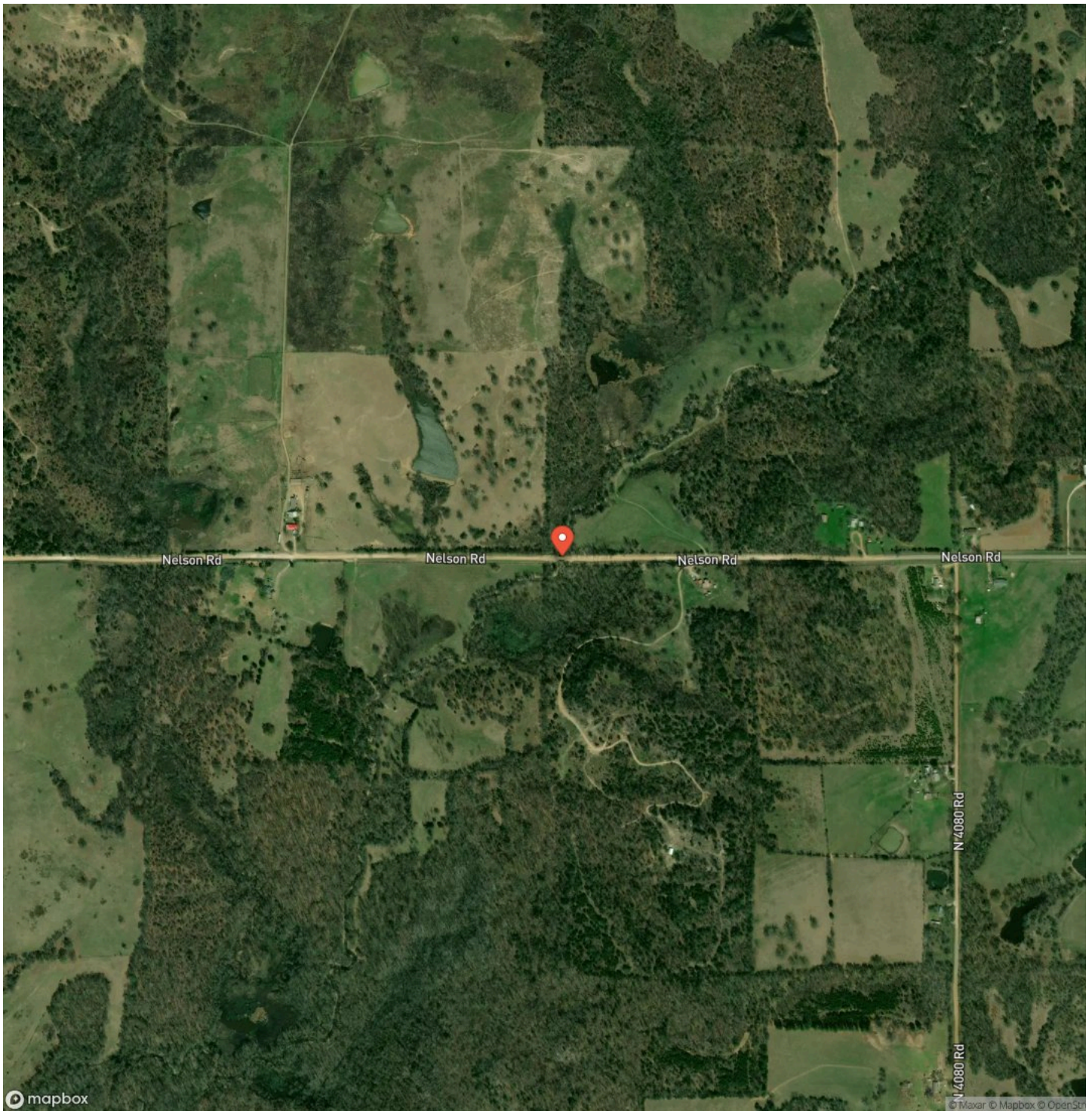
Locator Map



Locator Map



Satellite Map



[illegible]

DISCLAIMERS

Shown by appointment only with Bar T Realty, LLC. Buyers brokers must be identified on first contact and must accompany buying prospect on first showing to be allowed full fee participation. If this condition is not met, fee participation will be at the sole discretion of Bar T Realty, LLC.



Bar T Realty, LLC
46 Samac Lane
Lampasas, TX 76550
(833) 722-7873
www.bartrealtyllc.com

