

Canal Tract (6573)
Chester, SC 29706

\$390,087
111.090± Acres
Chester County



MORE INFO ONLINE:

1

**[https://www.mossyoakproperties.com/
oak-properties-rural-land-
investments/](https://www.mossyoakproperties.com/oak-properties-rural-land-investments/)**

Canal Tract (6573)
Chester, SC / Chester County

SUMMARY

City, State Zip

Chester, SC 29706

County

Chester County

Type

Farms, Recreational Land, Timberland

Latitude / Longitude

34.704861 / -81.214256

Acreage

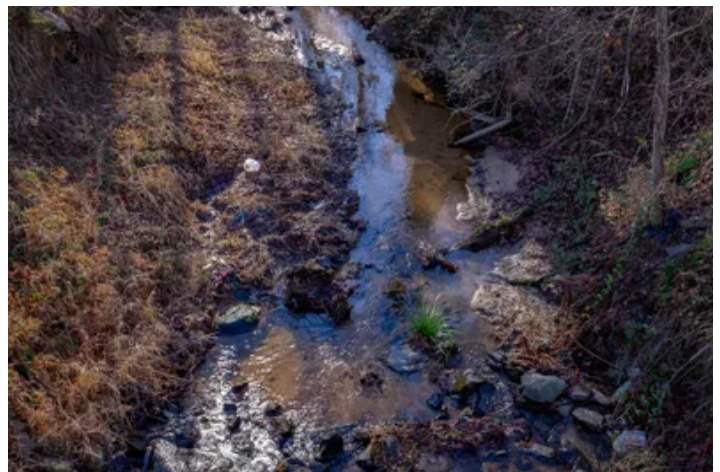
111.090

Price

\$390,087

Property Website

<https://www.mossoakproperties.com/property/canal-tract-6573-chester-south-carolina/48974/>



MORE INFO ONLINE:

<https://www.mossoakproperties.com/oak-properties-rural-land-investments/>

Canal Tract (6573)

Chester, SC / Chester County

PROPERTY DESCRIPTION

The **Canal Tract** (CNC 6573) is a quietly located tree farm in Central Chester County near the rural town of Chester, SC. This property contains 111.09 acres with 103 acres of pines planted in 2021 with the remaining acreage containing a mix of pines and hardwood drainage.

This property is an excellent opportunity for ownership of a property that has recreational opportunities for hunting whitetail deer or wild turkey.

The Canal tract offers an opportunity for having a residence with enough acreage to have a small farm out of town from the Charlotte – Rock Hill area but close enough to the town of Chester for basic shopping.

The Canal Tract is conveniently located just a 6 mile drive from Chester, SC and is a pleasant 30-mile drive to Rock Hill and the Charlotte area can be reached within 45 minutes.

This property would be an ideal location for a homestead with a lot of potential for development as a recreational timber farm with a timberland investment component.



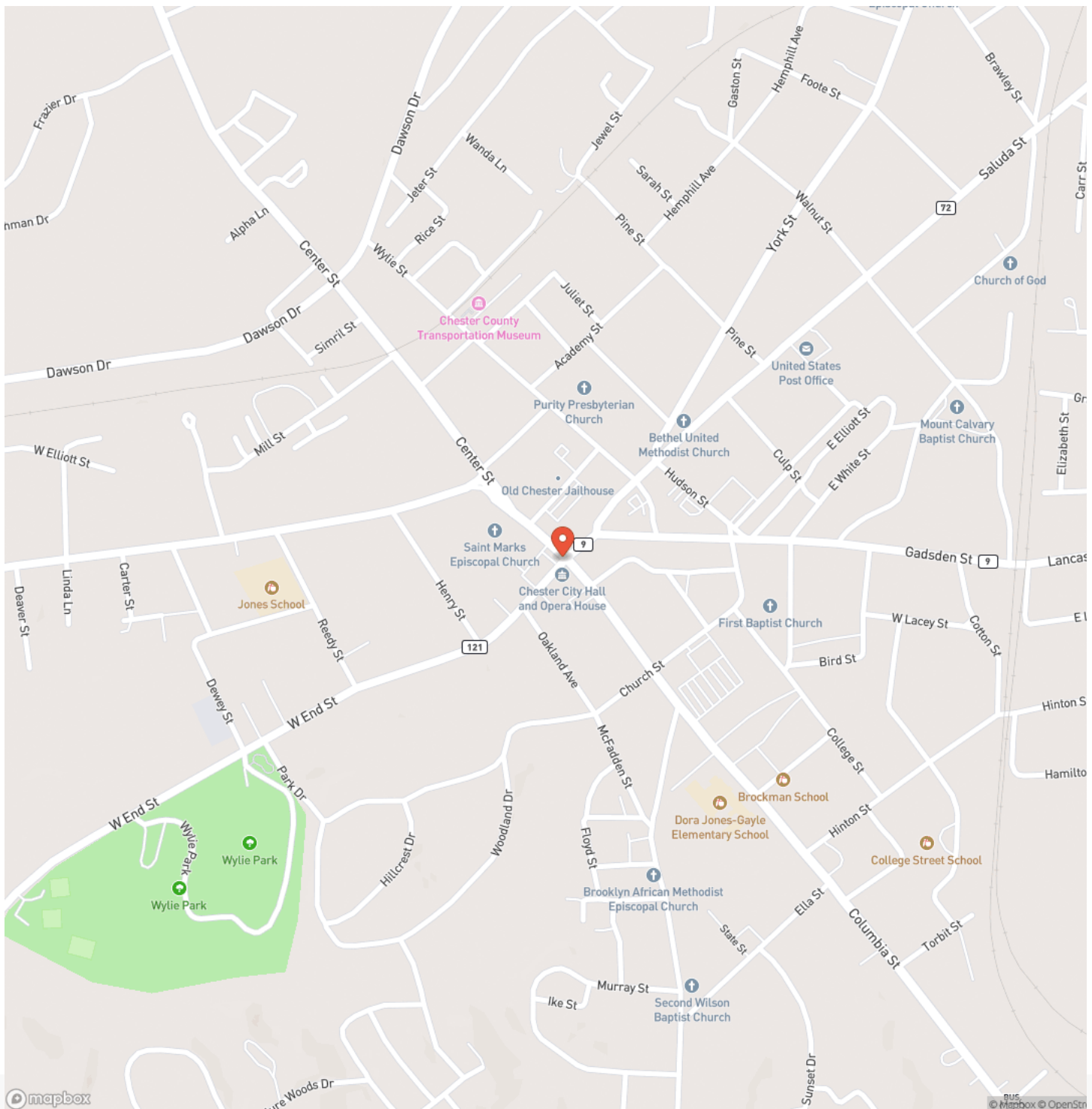
Canal Tract (6573)
Chester, SC / Chester County



MORE INFO ONLINE:

**[https://www.mossyoakproperties.com/
oak-properties-rural-land-
investments/](https://www.mossyoakproperties.com/oak-properties-rural-land-investments/)**

Locator Map

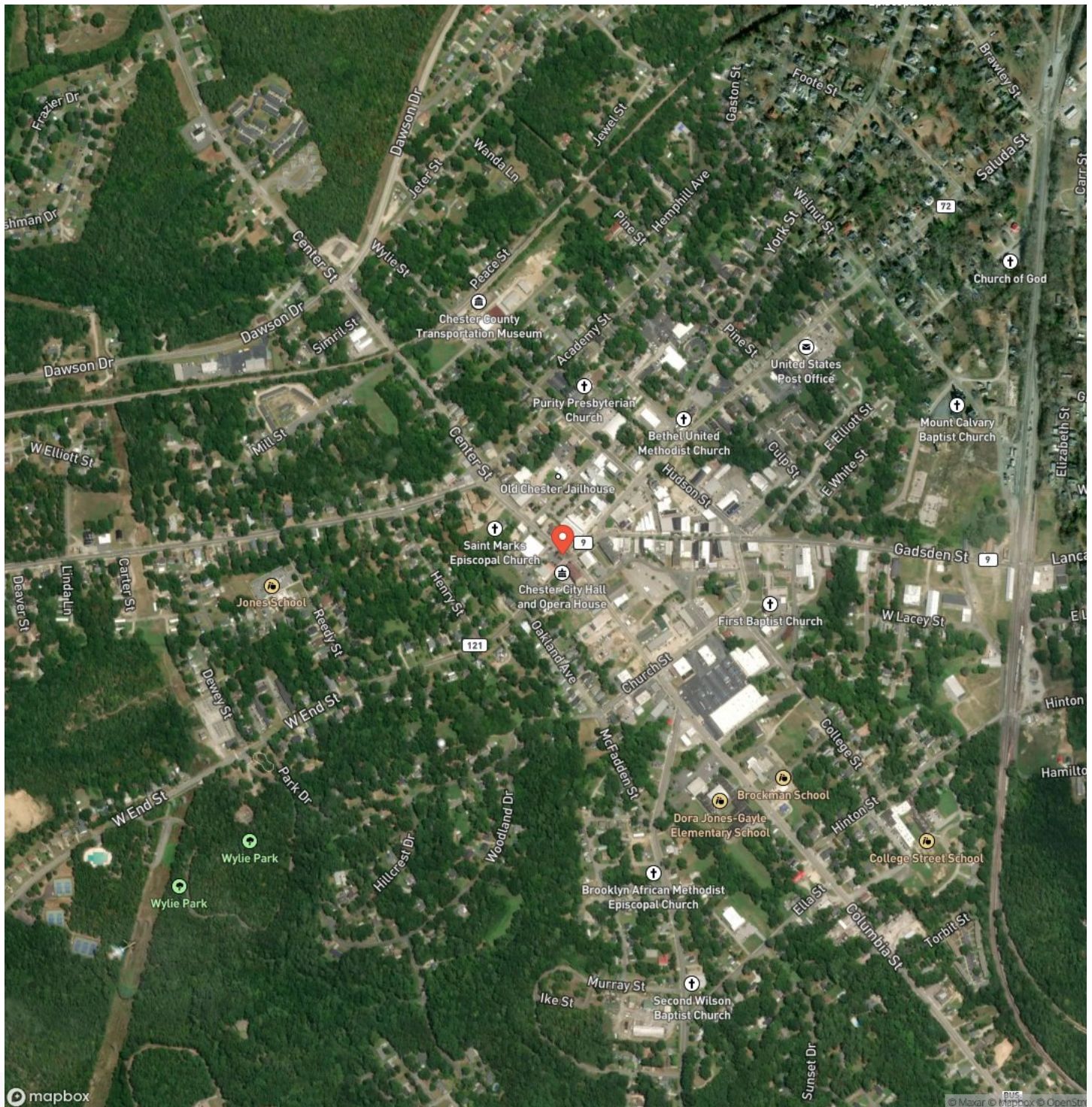


MORE INFO ONLINE:

5

<https://www.mossyOakproperties.com/oak-properties-rural-land-investments/>

Satellite Map



MORE INFO ONLINE:

Canal Tract (6573)
Chester, SC / Chester County

LISTING REPRESENTATIVE

For more information contact:



Representative

Dave Hegler

Mobile

(803) 920-5819

Office

(803) 722-1124

Email

dhegler@mossyoakproperties.com

Address

245 Stoneridge Drive

City / State / Zip

Columbia, SC 29210

NOTES



MORE INFO ONLINE:

7

**[https://www.mossyoakproperties.com
oak-properties-rural-land-
investments/](https://www.mossyoakproperties.com/oak-properties-rural-land-investments/)**

This image shows a blank sheet of white paper with horizontal ruling lines. The lines are evenly spaced and run across the width of the page. There are no margins, text, or other markings on the paper.



**[https://www.mossyoakproperties.com
oak-properties-rural-land-
investments/](https://www.mossyoakproperties.com/oak-properties-rural-land-investments/)**

DISCLAIMERS

Information in this brochure is provided solely for information purposes and does not constitute an offer to sell or advertise real estate outside the states in which broker or agent licensed. The information presented has been obtained from sources deemed to be reliable, but is not guaranteed or warranted by the agent, broker, or the sellers of these properties. This offering is subject to errors, omissions, prior sale, price change, correction or withdrawal from the market without notice. All references to age, square footage, income, expenses, acreage, carrying capacity, and land classification, etc. are approximate. Prospective buyers are chargeable with and expected to conduct their own independent investigation of the information and the property and to rely only on those results. Sellers reserve the right to accept or reject any and all offers without liability to any buyer or cooperating broker.

Maps are provided for illustration purposes only, the accuracy is not warranted. Parcels on interactive maps are not adjusted to match aerial backgrounds. This information is for reference purposes only and is not a legal document. Data maps contain errors. The seller and seller's agent are making known to all potential buyers that there may be variations between the location of the existing fence lines and the legal description of the deeded property. Seller and seller's agent make no warranties with regard to the location of the fence lines in relationship to the deeded property lines, nor does the Seller make any warranties or representations with regard to the specific acreage contained within the fenced property lines. Seller is selling the property in an "as is" condition, which includes the location of the fences as they exist. Boundaries shown on the accompanying maps are approximate, based on county parcel data. The maps are not to scale. The accuracy of the maps is not guaranteed. Prospective buyers are encouraged to verify fence lines, deeded property lines and acreages using a licensed surveyor at their own expense.



Mossy Oak Properties Rural Land Investments

245 Stoneridge Drive

Columbia, SC 29210

(803) 722-1124

<https://www.mossy oakproperties.com/office/mossy-oak-properties-rural-land-investments/>



MORE INFO ONLINE:

<https://www.mossy oakproperties.com/office/mossy-oak-properties-rural-land-investments/>