

Elk County Pasture and Build Site 60
0000 Rd 28
Fall River, KS 67047

\$201,000
60± Acres
Elk County



Elk County Pasture and Build Site 60
Fall River, KS / Elk County

SUMMARY

Address

0000 Rd 28

City, State Zip

Fall River, KS 67047

County

Elk County

Type

Undeveloped Land

Latitude / Longitude

37.578136 / -96.035591

Acreage

60

Price

\$201,000

Property Website

<https://l2realtyinc.com/property/elk-county-pasture-and-build-site-60-elk-kansas/85817/>



Elk County Pasture and Build Site 60

Fall River, KS / Elk County

PROPERTY DESCRIPTION

60± Acres of Prime Kansas Pastureland with Pond, Hunting, and Blacktop Frontage.

If you've been searching for a manageable and multi-use tract of land in southeast Kansas, this 60± acre property just south of Fall River, KS, deserves a look. This area is known for its scenic rolling landscapes, rich grazing ground, and strong wildlife presence. The property at hand offers a balance of agricultural value and recreational appeal.

The land is primarily open pasture, making it ideal for cattle or livestock operations. It has a well-maintained five-wire barbed wire fence, ready for immediate grazing. With paved blacktop frontage, you'll enjoy reliable year-round access. Along with blacktop road frontage it also holds all the needed utilities at the road for a build site. Having rural water and electricity directly at the road is a huge upside for anyone wanting to expand and own a home on acreage.

A clean, well-placed pond sits on the property, serving as a consistent water source for livestock and a natural draw for wildlife. Scattered clusters of mature shade trees provide cover for animals and relief from the Kansas sun. The terrain is mostly level, with a gentle slope to the south that adds natural drainage for water run off.

In addition to its agricultural value, this property offers excellent recreational potential. With a mix of open ground, timber pockets, and a water source, it attracts deer, turkey, and other native wildlife, making it an attractive spot for hunting as well.

Whether you're looking to expand your current grazing operation, establish a private retreat, or make a long-term land investment, this 60± acre tract offers versatility, location, and beauty in one complete package.

Key Features:

- 60± acres of fenced pasture
- Blacktop road frontage for easy access
- Full perimeter five-wire barbed wire fencing
- Established pond for livestock and wildlife
- Scattered mature trees providing shade and cover
- Gently rolling terrain with a slope to the south
- Excellent deer and turkey hunting opportunities
- Located in Elk County, just south of Fall River, KS
- Utilities easily accessible
- Short drive to Fall River Lake and public hunting areas

For a closer look at this property give Clint Graves a call at [\(620\) 440-2683](tel:6204402683) or email at Cgraves@L2realtyinc.com

MORE INFO ONLINE:

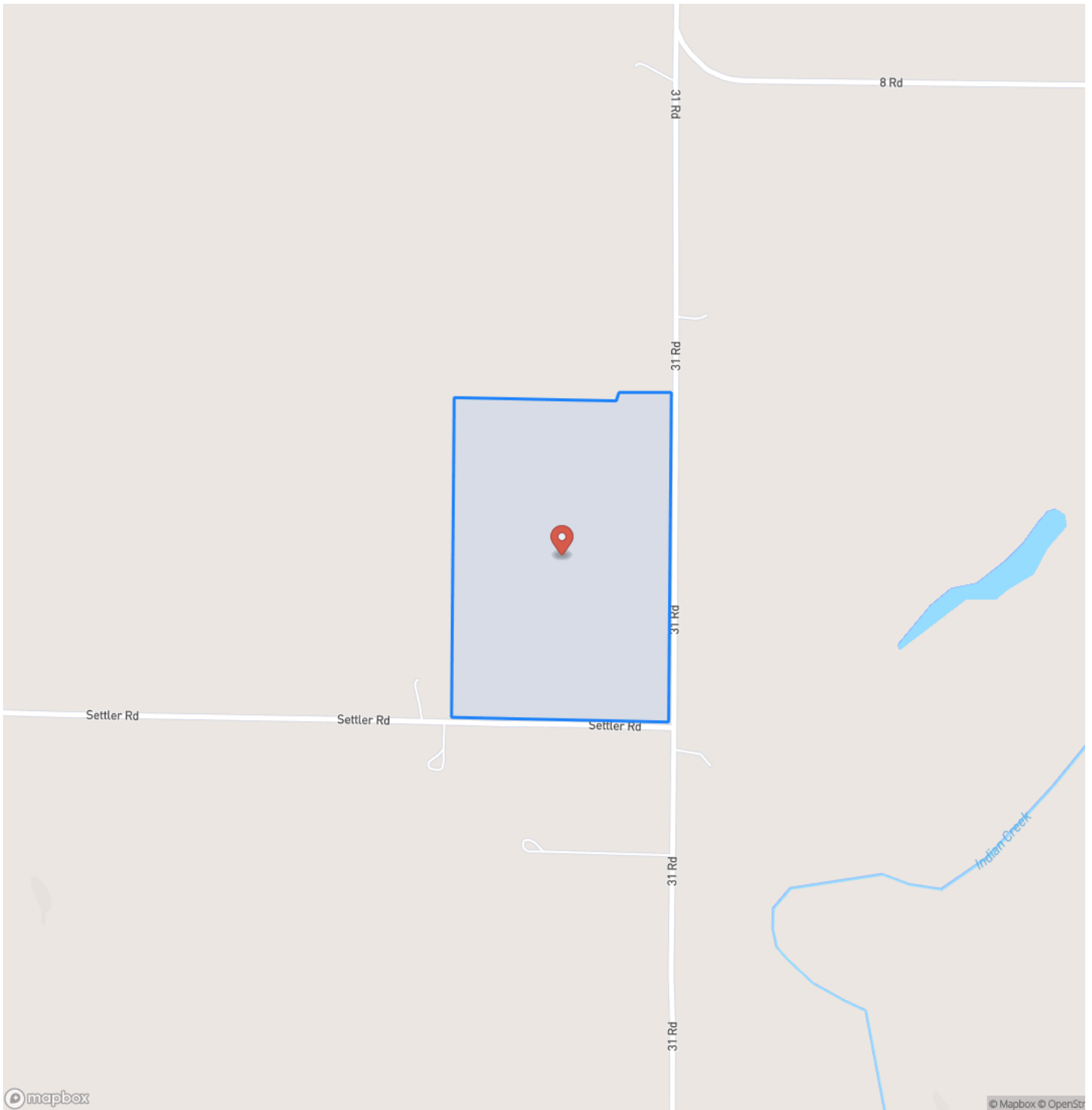
L2realtyinc.com



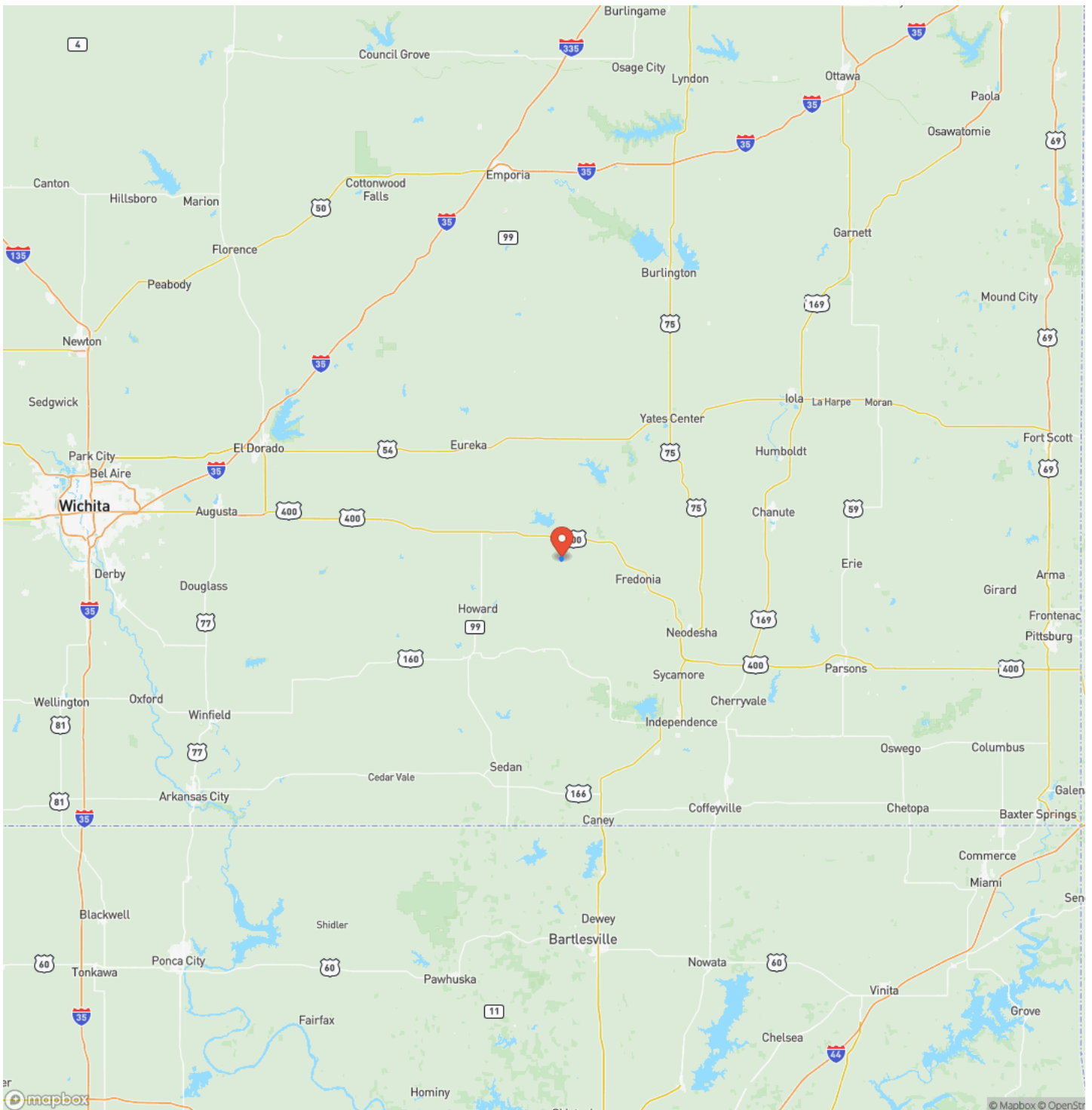
Elk County Pasture and Build Site 60
Fall River, KS / Elk County



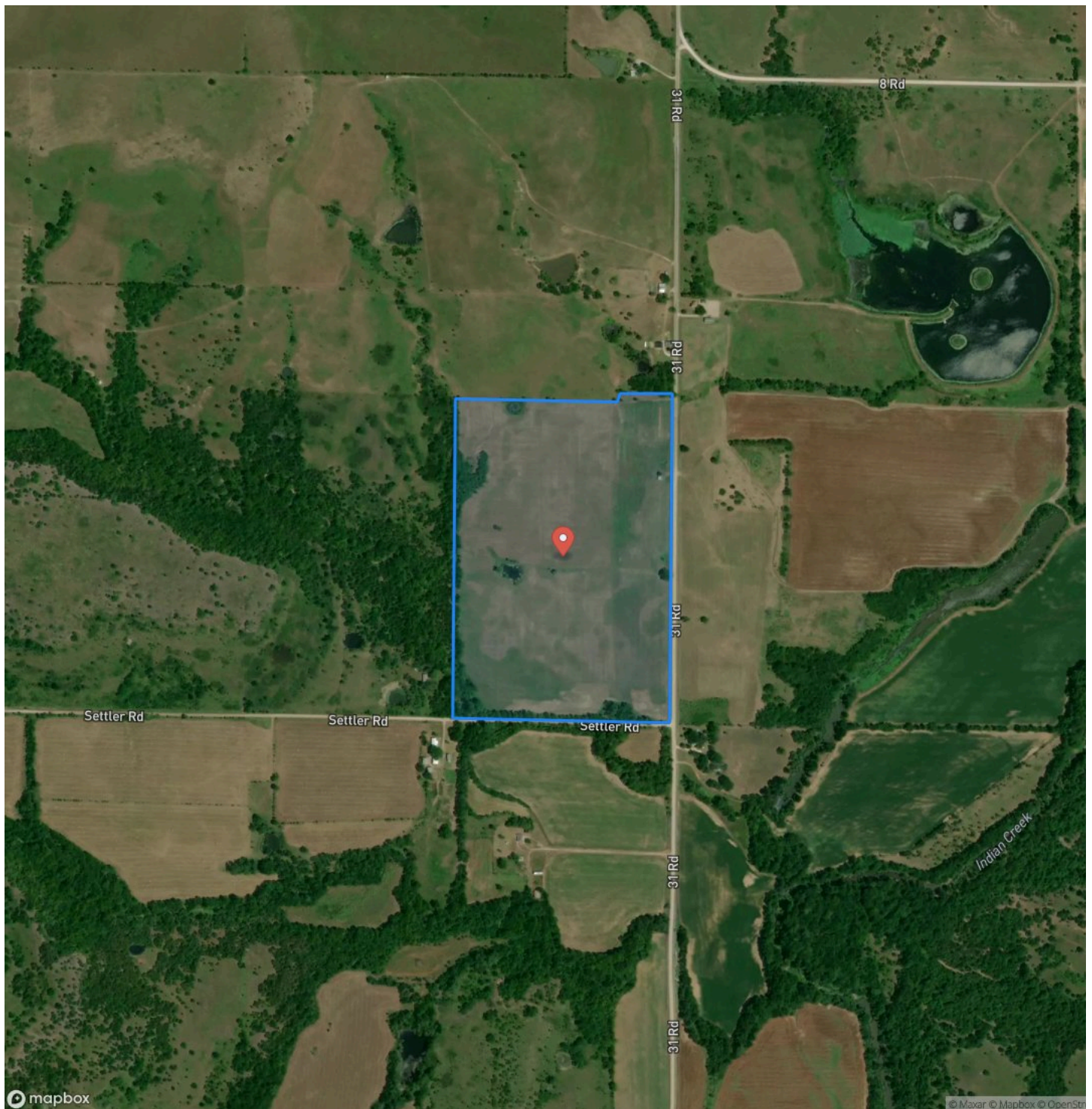
Locator Map



Locator Map



Satellite Map



Elk County Pasture and Build Site 60

Fall River, KS / Elk County

LISTING REPRESENTATIVE

For more information contact:



Representative

Clint Graves

Mobile

(620) 440-2683

Email

cgraves@l2realtyinc.com

Address

City / State / Zip

NOTES

[illegible]

[illegible]

L2realtyinc.com

DISCLAIMERS

Graveyard on soud end of property.



L2 Realty, Inc - Land and Lifestyle Properties
4045B CR 3900
Independence, KS 67301
(620) 577-4487
L2realtyinc.com

