

Cow Shoals Cabin
1215 Ferguson Road
Heber Springs, AR 72543

\$795,000
0.290± Acres
Cleburne County



Cow Shoals Cabin
Heber Springs, AR / Cleburne County

SUMMARY

Address

1215 Ferguson Road

City, State Zip

Heber Springs, AR 72543

County

Cleburne County

Type

Single Family

Latitude / Longitude

35.516813 / -91.931732

Dwelling Square Feet

2453

Bedrooms / Bathrooms

3 / 3

Acreage

0.290

Price

\$795,000

Property Website

<https://habitatlandcompany.com/property/cow-shoals-cabin-cleburne-arkansas/92785/>



Cow Shoals Cabin

Heber Springs, AR / Cleburne County

PROPERTY DESCRIPTION

The Cow Shoals Cabin – Little Red River | Heber Springs, Arkansas (Cleburne County)

Welcome to the Cow Shoals Cabin, a truly special retreat perched above the Little Red River just outside the city limits of Heber Springs, Arkansas. Set on approximately 0.29 acres with about 120 feet of river frontage, this property sits within walking distance of the Arkansas Game and Fish Commission's Cow Shoals access — and even features its own private staircase leading directly down to the river. Step out your back door and enjoy world-class trout fishing in your own backyard.

The cabin itself is as inviting as the view it overlooks. Spanning roughly 2,450 square feet, it features 3 bedrooms and 3 bathrooms, with an open layout designed to showcase the river from nearly every room. The living room's floor-to-ceiling windows bring the water and sky right into the home, while a cozy sitting room with a stone fireplace creates a perfect space to unwind after a day on the river.

From the sitting room, step onto the screened-in porch overlooking the water, or head out to the 800-square-foot open-air stone patio — a natural gathering place for morning coffee or evening conversation as the river drifts by below.

Between the living and sitting areas, a refreshment bar with a built-in refrigerator and ice maker keeps entertaining easy. The home's interior is finished in custom tongue-and-groove wood throughout — walls, ceilings, and trim — paired with wood blinds that complement the warm, natural atmosphere.

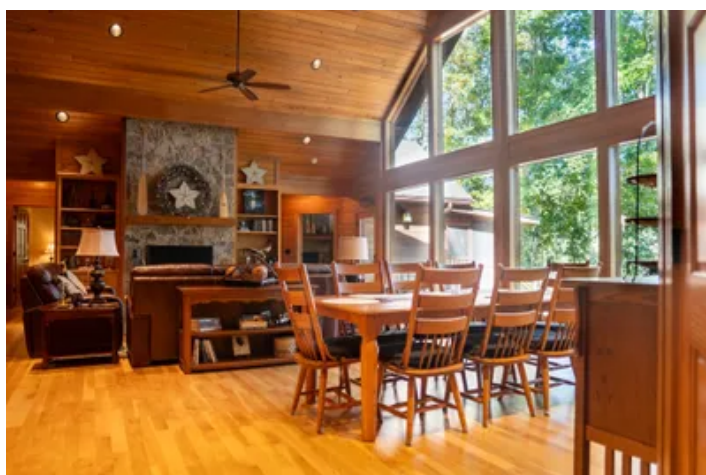
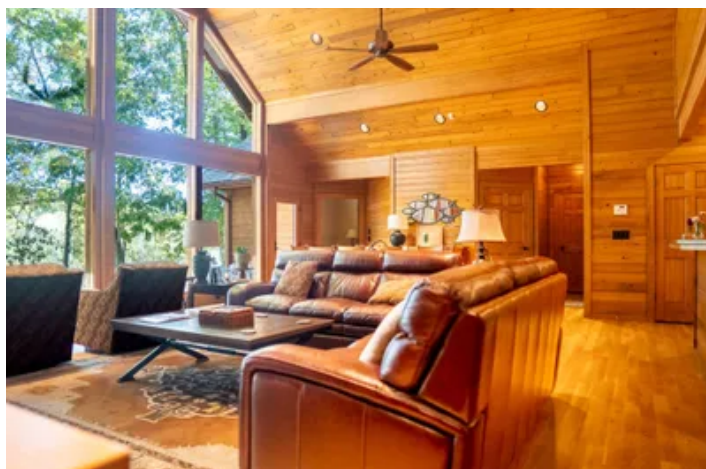
The kitchen is spacious and functional, featuring a bar and island with a built-in 5-burner gas range, double ovens, and a built-in microwave with a lighted prep area below — all in stainless steel.

Outside, the low-maintenance yard is beautifully landscaped and equipped with a sprinkler system. Large shade trees surround the home, adding to the peaceful, tucked-away feeling.

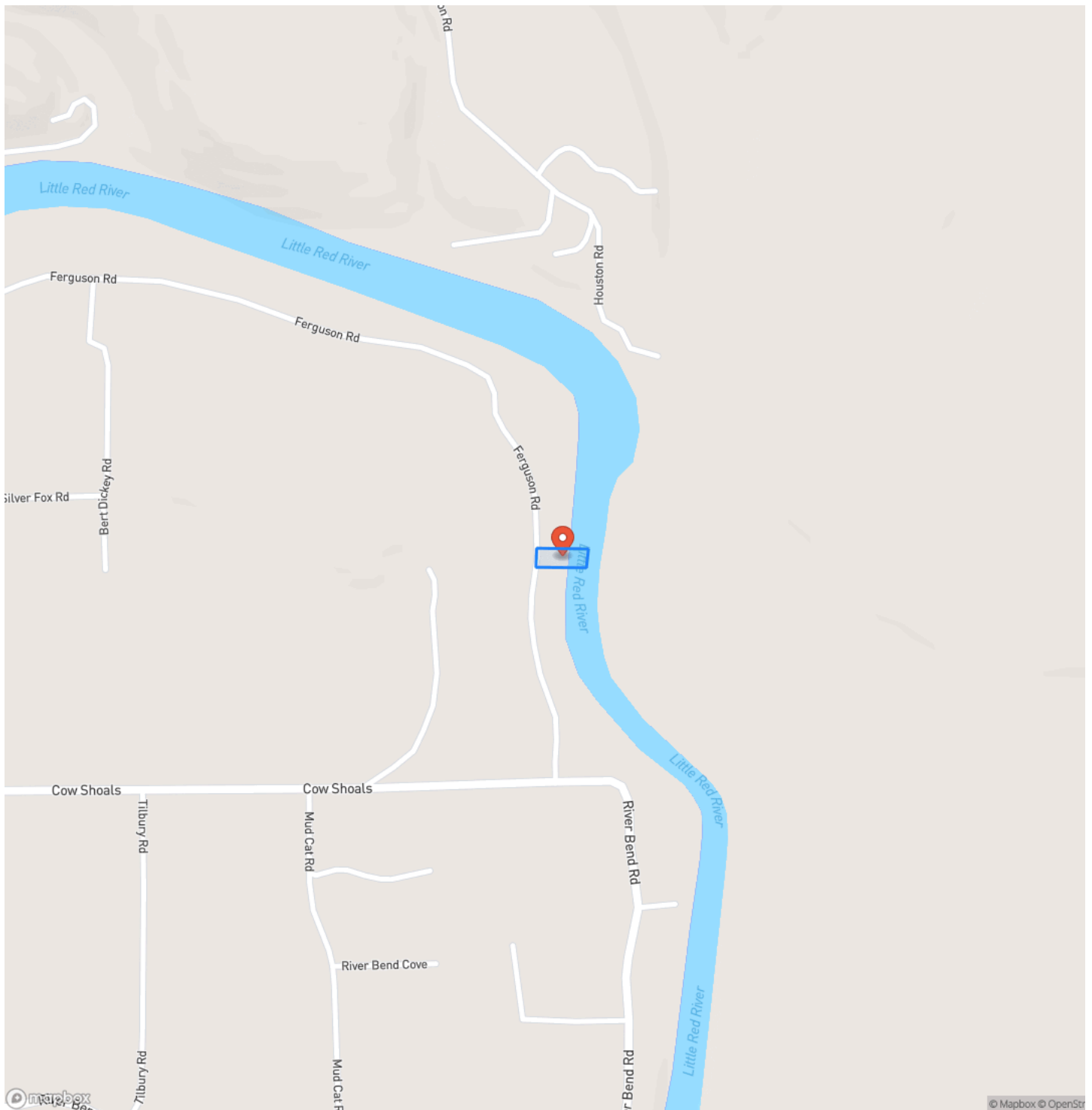
Everything about the Cow Shoals Cabin has been designed to observe, access, and enjoy the river. The moment you park and step out, it's quiet — calm — and everything but the sound of moving water just seems to fade away.



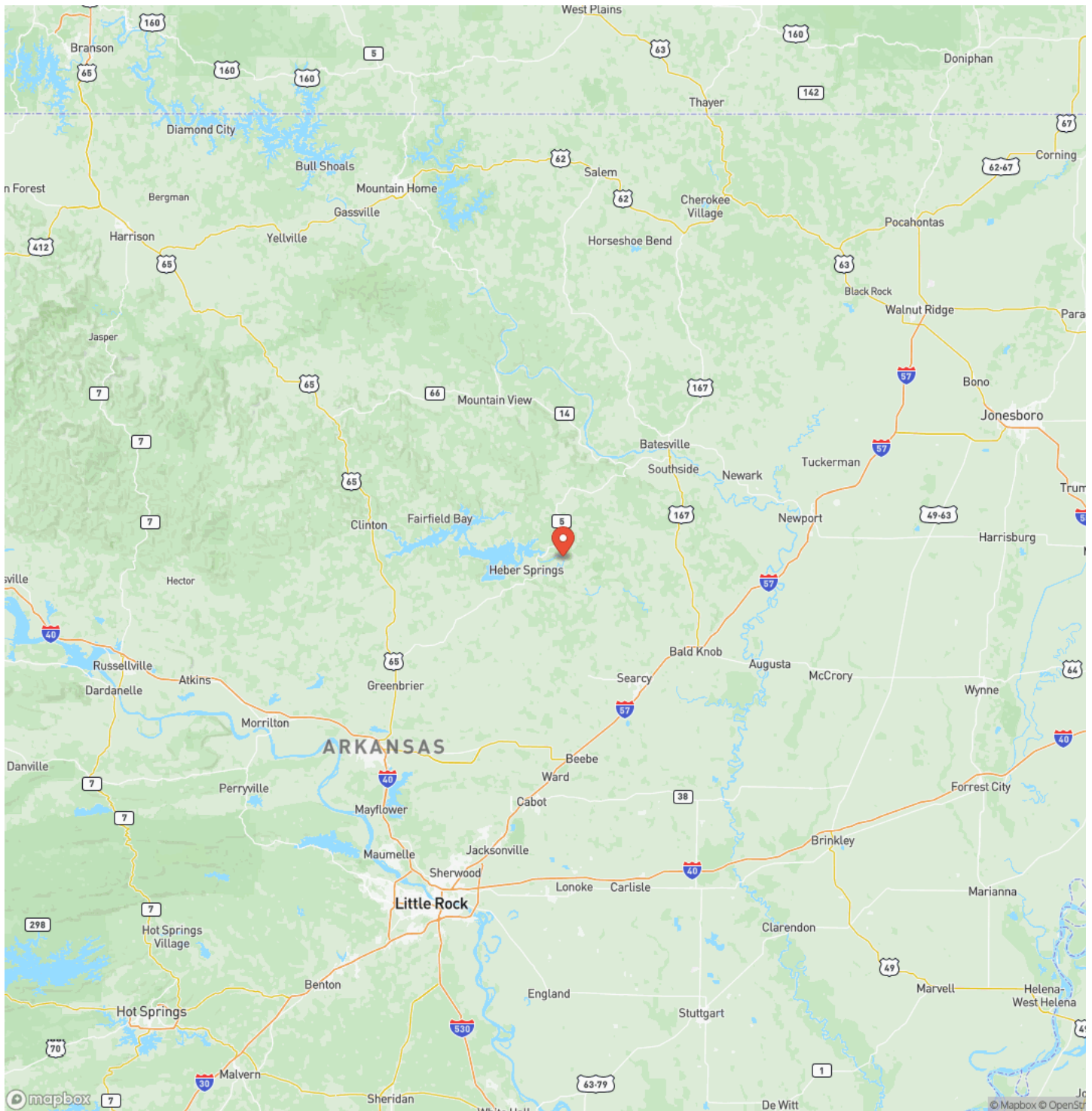
Cow Shoals Cabin
Heber Springs, AR / Cleburne County



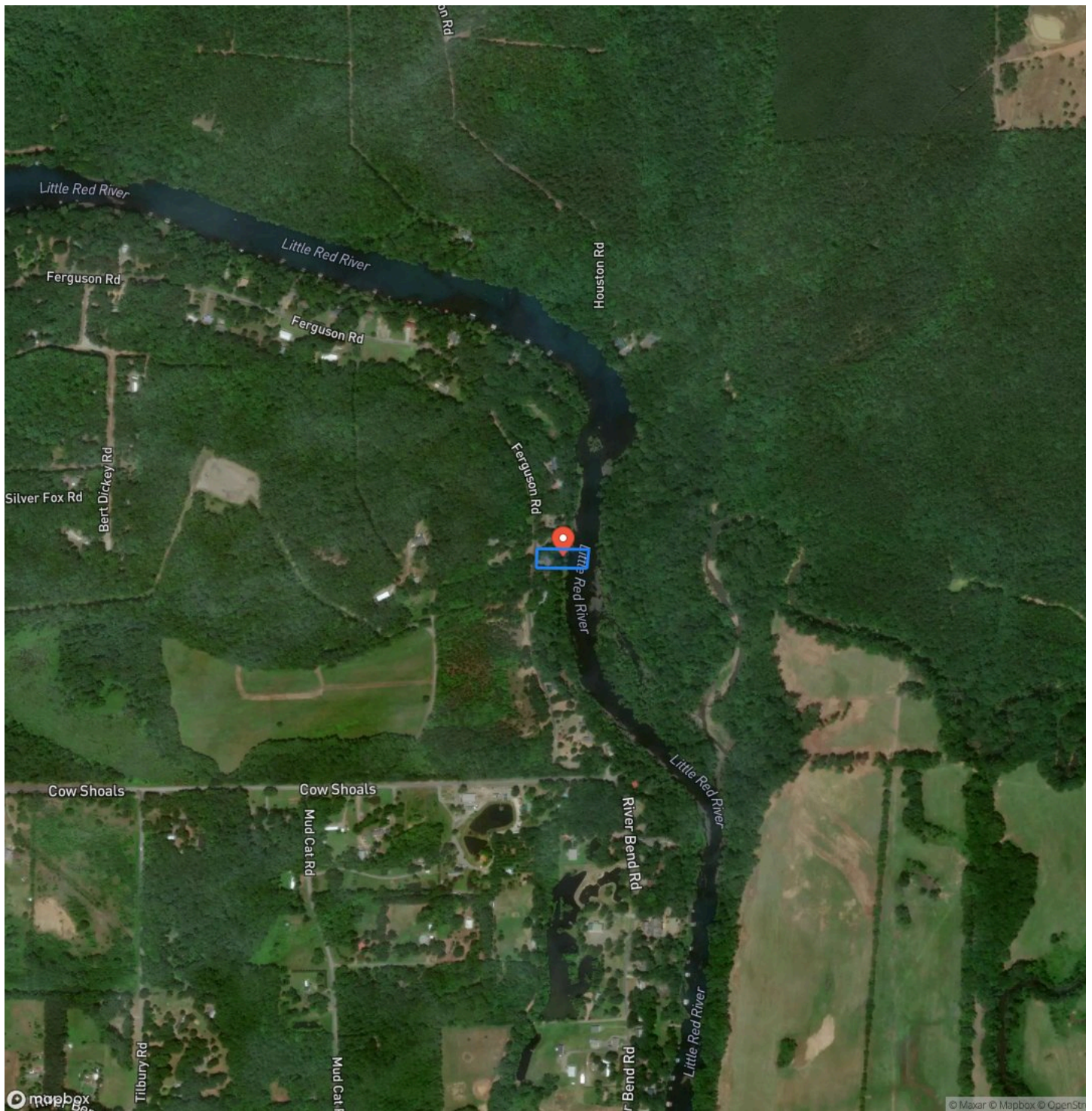
Locator Map



Locator Map



Satellite Map



Cow Shoals Cabin
Heber Springs, AR / Cleburne County

LISTING REPRESENTATIVE

For more information contact:



Representative

Will Hardin

Mobile

(870) 512-9298

Email

will@habitatlandcompany.com

Address

City / State / Zip

NOTES

[illegible]

This image shows a single sheet of white paper with horizontal ruling lines. The lines are evenly spaced and run across the width of the page. There are no margins, text, or other markings on the paper.



<https://www.habitatlandcompany.com/>

DISCLAIMERS

Information in this brochure is provided solely for information purposes and does not constitute an offer to sell or advertise real estate outside the states in which broker or agent licensed. The information presented has been obtained from sources deemed to be reliable, but is not guaranteed or warranted by the agent, broker, or the sellers of these properties. This offering is subject to errors, omissions, prior sale, price change, correction or withdrawal from the market without notice. All references to age, square footage, income, expenses, acreage, carrying capacity, and land classification, etc. are approximate. Prospective buyers are chargeable with and expected to conduct their own independent investigation of the information and the property and to rely only on those results. Sellers reserve the right to accept or reject any and all offers without liability to any buyer or cooperating broker.

Maps are provided for illustration purposes only, the accuracy is not warranted. Parcels on interactive maps are not adjusted to match aerial backgrounds. This information is for reference purposes only and is not a legal document. Data maps contain errors. The seller and seller's agent are making known to all potential buyers that there may be variations between the location of the existing fence lines and the legal description of the deeded property. Seller and seller's agent make no warranties with regard to the location of the fence lines in relationship to the deeded property lines, nor does the Seller make any warranties or representations with regard to the specific acreage contained within the fenced property lines. Seller is selling the property in an "as is" condition, which includes the location of the fences as they exist. Boundaries shown on the accompanying maps are approximate, based on county parcel data. The maps are not to scale. The accuracy of the maps is not guaranteed. Prospective buyers are encouraged to verify fence lines, deeded property lines and acreages using a licensed surveyor at their own expense.



Habitat Land Company
418 E. Booth Rd
Searcy, AR 72143
(870) 830-5263
<https://www.habitatlandcompany.com/>

