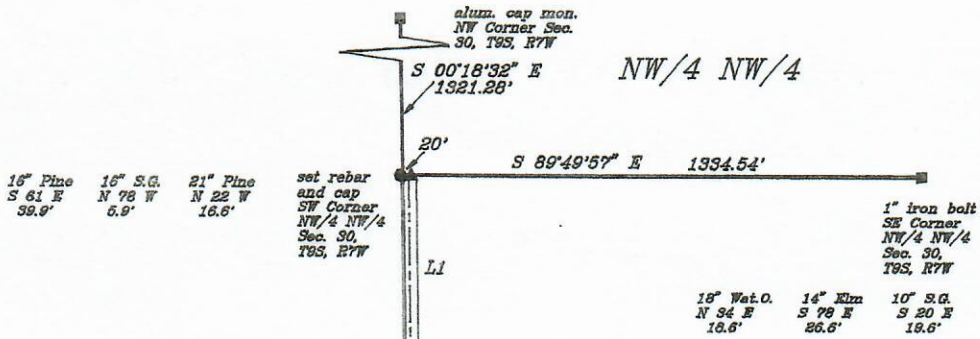


SURVEY PLAT



LINE DATA

L1	S 00°18'32" E	525.23'
L2	S 56°54'57" E	115.51'
L3	S 31°48'40" E	177.00'
L4	S 24°48'15" E	261.05'
L5	S 31°51'20" E	699.85'
L6	S 20°37'54" E	223.76'
L7	S 37°52'39" E	142.97'
L8	S 41°05'01" E	342.70'
L9	S 11°24'07" E	97.54'
L10	S 16°25'52" W	259.79'
L11	S 51°58'53" W	99.48'
L12	S 77°47'11" W	169.54'
L13	S 19°17'56" W	62.67'

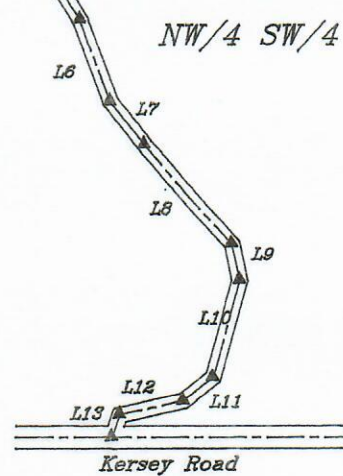


True North off Hwy plans

LEGEND

- Monument set
- Monument found
- Calculated corner

NOTE: All monuments set are 1/2" rebars and caps.



Scale: 1" = 300'	WYNN SURVEYING INC.
Date: April 3, 2020	326 Friendship Cir. Star City, AR 71667 (870)-628-4568
Drawn By: Clay Wynn	Certified by: Robert C. Wynn, Lincoln County Surveyor, PLS 1033
Drawing Number: 40-1130a	Legal: a road easement through the SW/4 NW/4 and the NW/4 SW/4 of Sec. 30, T9S, R7W, Lincoln Co. Ar.
Prepared For: Ridgewood Timber	500-095-07W-0-30-304-40-1033