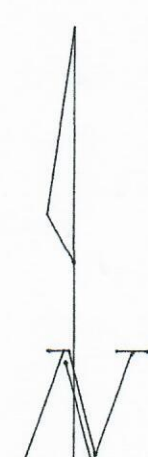
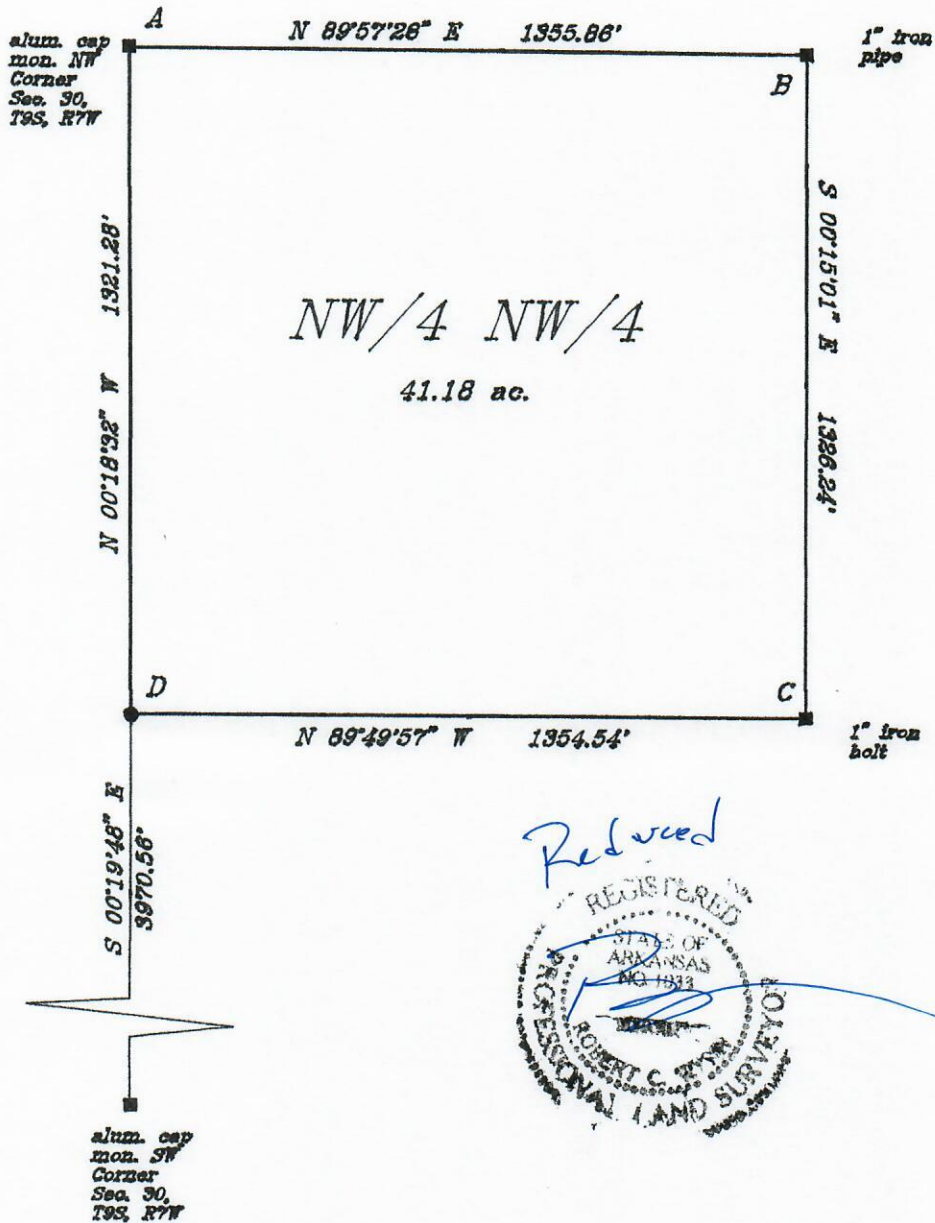


SURVEY PLAT

CORNER WITNESS

A	17" S.G. S 78 E 33.2'	34" Wat.O. N 9 E 28.7'	13" P.O. S 79 W 22.6'	C	18" Wat.O. N 94 E 18.6'	14" Elm S 78 E 26.6'	10" S.G. S 20 E 19.6'
B	32" P.O. N 64 W 2.2'	8" Pine N 12 W 9.0'	7" Elm N 52 E 20.5'	D	16" Pine S 61 E 39.9'	16" S.G. N 78 W 5.9'	21" Pine N 22 W 16.6'

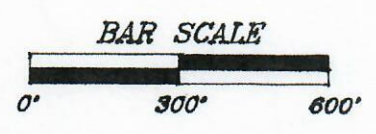


alum. cap
mon. SW
Corner
Sec. 30,
T9S, R7W

LEGEND

- Monument set ●
- Monument found ■
- Calculated corner ▲

NOTE: All monuments set are 1/2" rebars and caps.



Solar Observation.

Scale 1" = 300'	WYNN SURVEYING INC.	
Date April 7, 2021	326 Friendship Cir. Star City, AR 71667 (870)-628-4568	
Drawn By Clay Wynn	Certified by Robert C. Wynn, Lincoln County Surveyor, PLS 1033	
Drawing Number 40-1130c	Brief Legal The NW/4 of the NW/4 of Sec. 30, T9S, R7W, Lincoln Co. Ar.	
Prepared for Ridgewood Timber	500-09S-07W-0-30-440-40-1033	