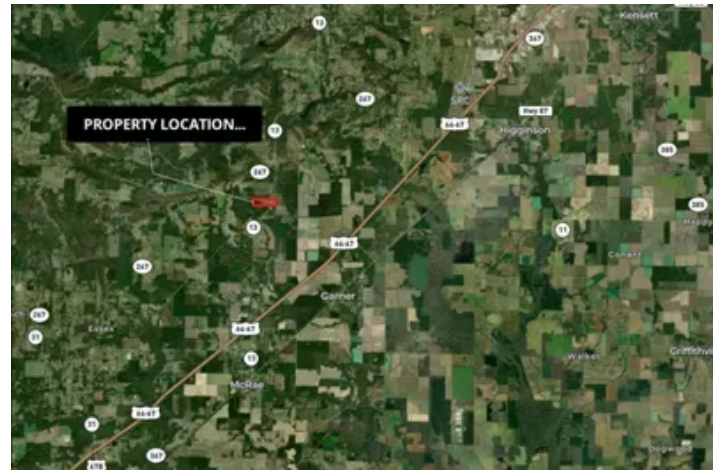


HWY 13 - 15 Acres
000 HWY 13
Mcrae, AR 72102

\$119,000
15± Acres
White County



HWY 13 - 15 Acres
Mcrae, AR / White County

SUMMARY

Address

000 HWY 13

City, State Zip

Mcrae, AR 72102

County

White County

Type

Farms, Hunting Land, Ranches, Recreational Land, Horse Property

Latitude / Longitude

35.117721 / -91.820553

Acreage

15

Price

\$119,000

Property Website

<https://habitatlandcompany.com/property/hwy-13-15-acres-white-arkansas/79130/>



HWY 13 - 15 Acres
Mcrae, AR / White County

PROPERTY DESCRIPTION

Small farm enthusiasts looking to move into the country, look no further. This 27 acre m/l parcel has lots of potential for your small farm. Additional acreage is available too. This is an outstanding location for affordable country living! Little Rock commuters? This property allows you to access Hwy. 67 / 167 in about 3 minutes. The amenities of town are just a few minutes away too. Outstanding deer habitat and hunting, small game opportunities, trail riding, etc...

-1 mile from Dollar General

-3 miles from Hwy. 67 / 167

-10 miles from Searcy

-7 miles from Beebe

-County water -Electricity

-440' of paved HWY 13 road frontage

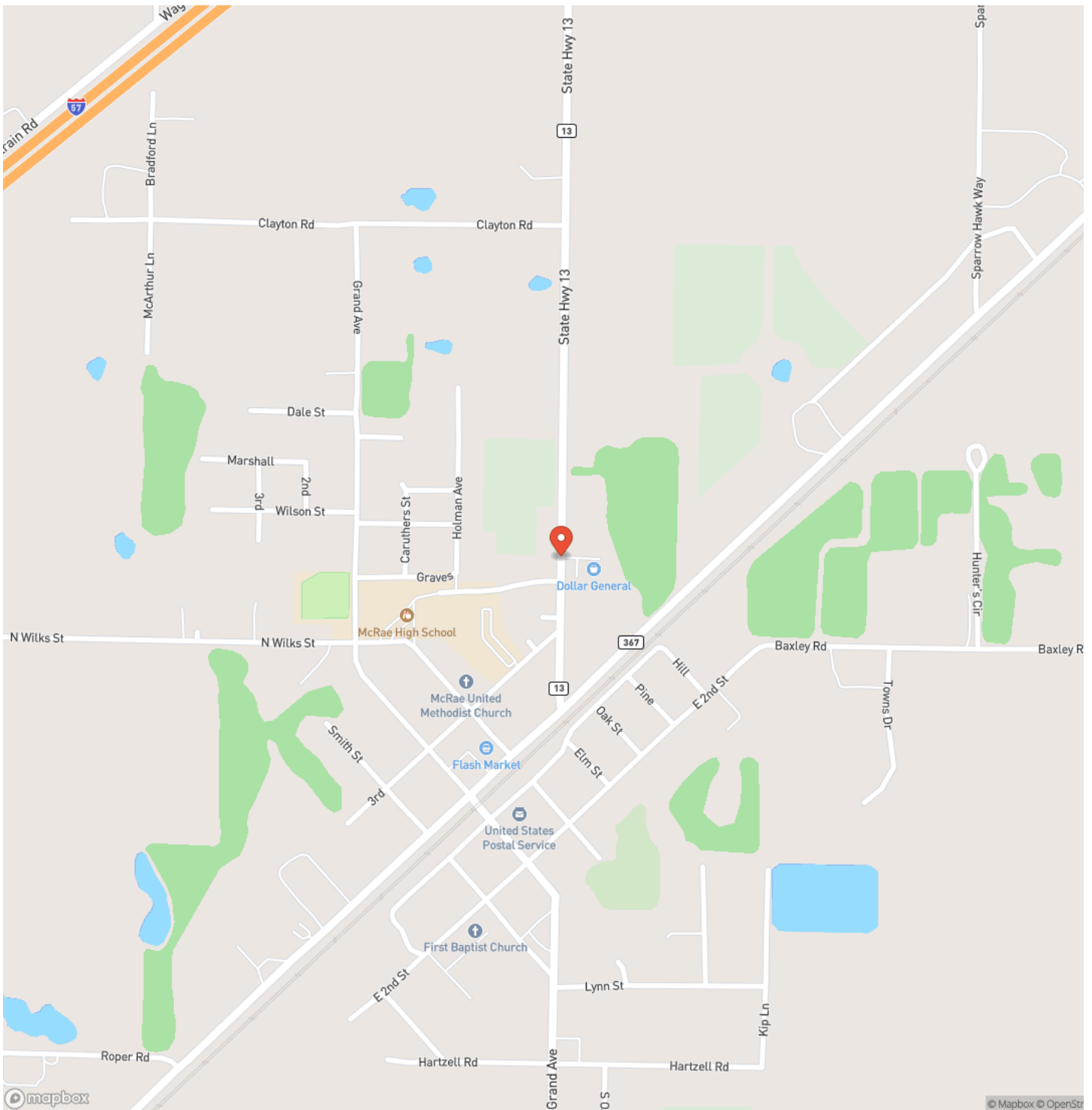
Additional acreage available. Agent owned.



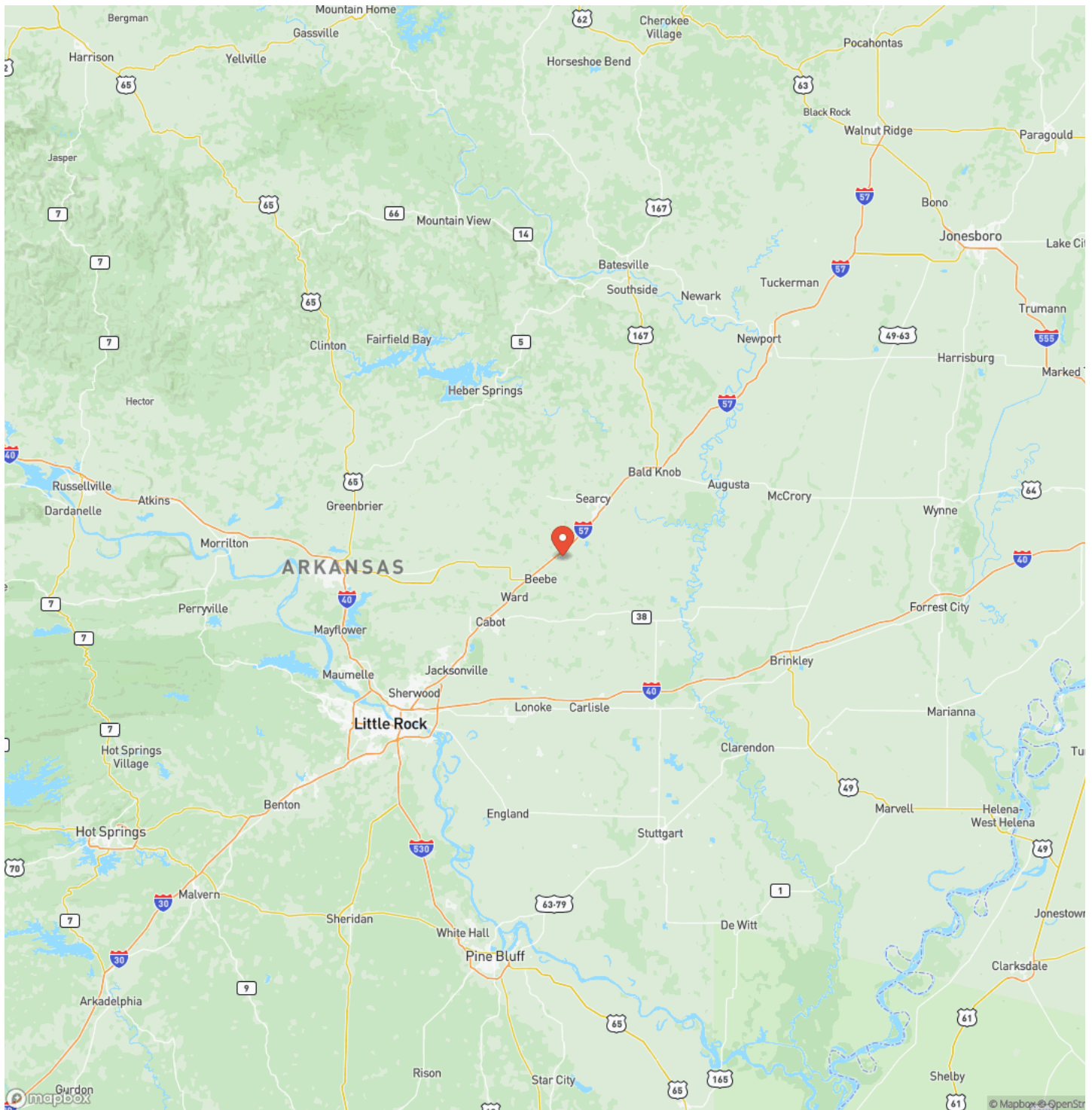
HWY 13 - 15 Acres
Mcrae, AR / White County



Locator Map



Locator Map



Satellite Map



HWY 13 - 15 Acres
Mcrae, AR / White County

LISTING REPRESENTATIVE

For more information contact:



Representative

Luke Cullins

Mobile

(501) 593-8009

Email

luke@habitatlandcompany.com

Address

270 Riverview Road

City / State / Zip

NOTES

[illegible]

MORE INFO ONLINE:

<https://www.habitatlandcompany.com/>

[illegible]

<https://www.habitatlandcompany.com/>

DISCLAIMERS

Information in this brochure is provided solely for information purposes and does not constitute an offer to sell or advertise real estate outside the states in which broker or agent licensed. The information presented has been obtained from sources deemed to be reliable, but is not guaranteed or warranted by the agent, broker, or the sellers of these properties. This offering is subject to errors, omissions, prior sale, price change, correction or withdrawal from the market without notice. All references to age, square footage, income, expenses, acreage, carrying capacity, and land classification, etc. are approximate. Prospective buyers are chargeable with and expected to conduct their own independent investigation of the information and the property and to rely only on those results. Sellers reserve the right to accept or reject any and all offers without liability to any buyer or cooperating broker.

Maps are provided for illustration purposes only, the accuracy is not warranted. Parcels on interactive maps are not adjusted to match aerial backgrounds. This information is for reference purposes only and is not a legal document. Data maps contain errors. The seller and seller's agent are making known to all potential buyers that there may be variations between the location of the existing fence lines and the legal description of the deeded property. Seller and seller's agent make no warranties with regard to the location of the fence lines in relationship to the deeded property lines, nor does the Seller make any warranties or representations with regard to the specific acreage contained within the fenced property lines. Seller is selling the property in an "as is" condition, which includes the location of the fences as they exist. Boundaries shown on the accompanying maps are approximate, based on county parcel data. The maps are not to scale. The accuracy of the maps is not guaranteed. Prospective buyers are encouraged to verify fence lines, deeded property lines and acreages using a licensed surveyor at their own expense.



Habitat Land Company
418 E. Booth Rd
Searcy, AR 72143
(870) 830-5263
<https://www.habitatlandcompany.com/>

