

**Ultimate Recreational Haven**  
00000 SE 70 RD  
Bluff City, KS 67018

**\$555,450**  
158.7± Acres  
Harper County



**Ultimate Recreational Haven**  
**Bluff City, KS / Harper County**

---

**SUMMARY**

**Address**

00000 SE 70 RD

**City, State Zip**

Bluff City, KS 67018

**County**

Harper County

**Type**

Farms, Hunting Land, Recreational Land

**Latitude / Longitude**

37.050892 / -97.859294

**Acreage**

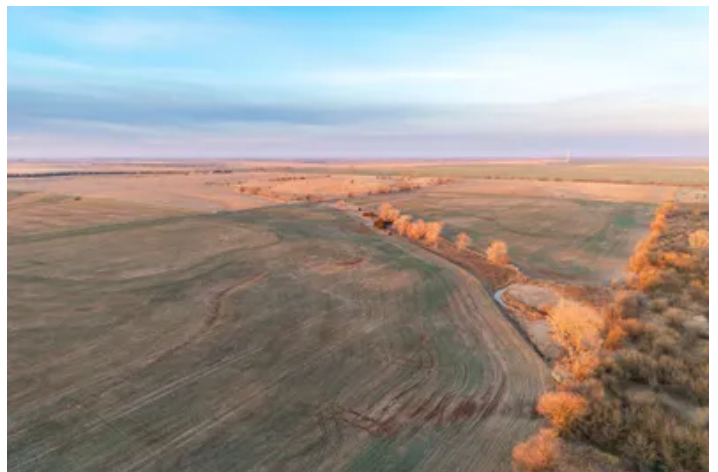
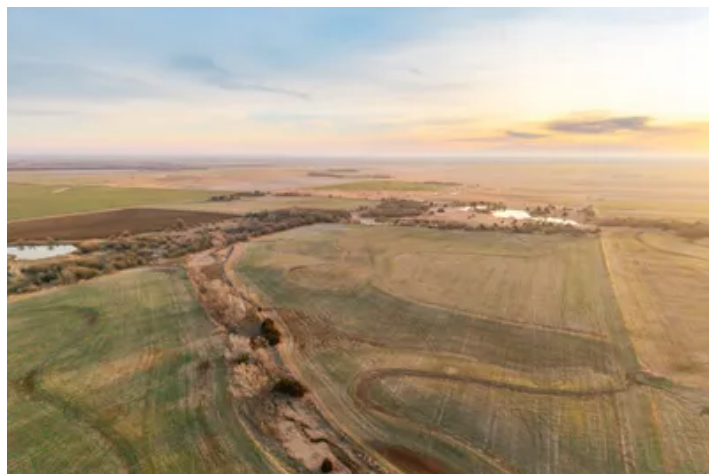
158.7

**Price**

\$555,450

**Property Website**

<https://arrowheadlandcompany.com/property/ultimate-recreational-haven/harper/kansas/99024/>



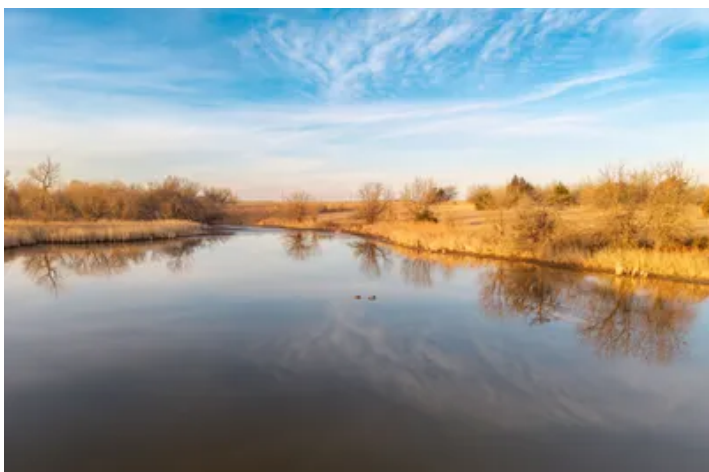
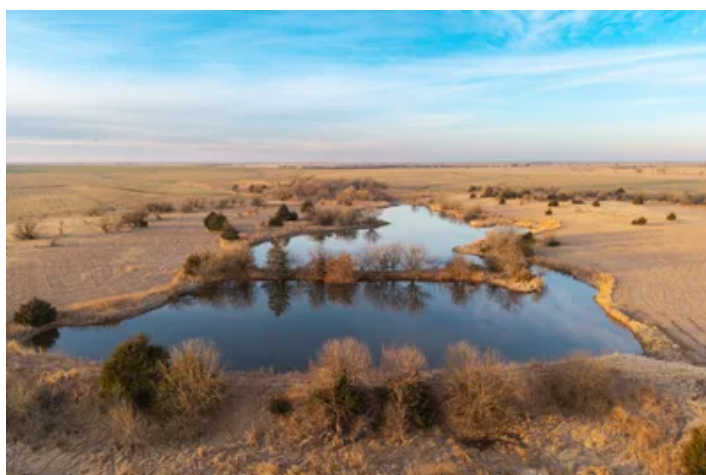
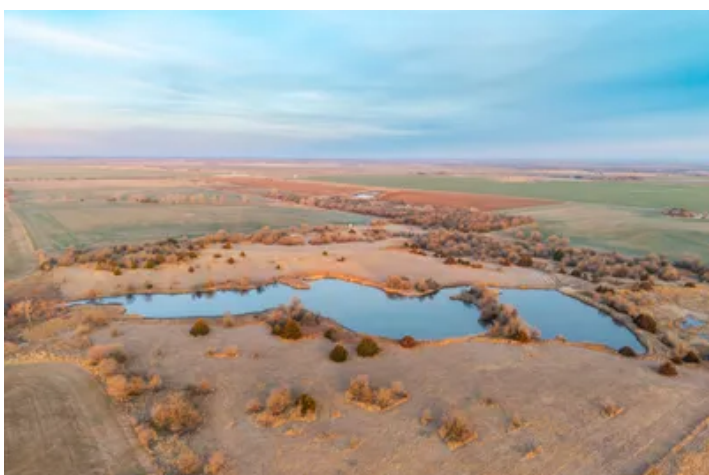
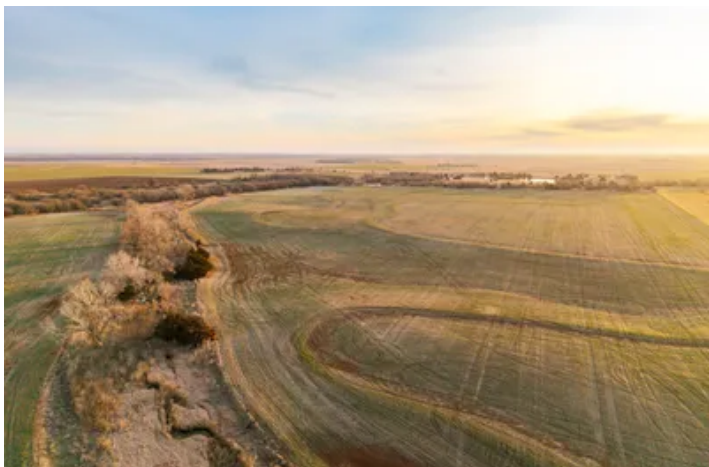
**PROPERTY DESCRIPTION**

Tucked away in Harper County, Kansas, this 158.7± acre tract offers the kind of opportunity that rarely comes to market! From the moment you step onto the property, it's clear this farm was built for both production and recreation. With 101± tillable acres, the property provides strong agricultural income potential, while the remaining acreage is a carefully balanced mix of native grasses, cedar thickets, and natural travel corridors that create exceptional wildlife habitat. A small creek winds quietly through the farm, adding character to the landscape and serving as a natural funnel for deer and turkey movement. In the southeast corner lies one of the property's most impressive features—a 4± acre pond that has consistently been loaded with waterfowl. Whether you're setting decoys before sunrise or casting a line in the evening, the pond offers both incredible duck hunting and fishing opportunities. What truly sets this tract apart is its versatility. This is not a one-season property; it's a year-round recreational haven! Trophy whitetails move through the thick bedding cover and crop edges. Ducks and geese utilize the pond throughout the season. Pheasants thrive in the native grasses, and turkeys roam the timbered edges and creek bottom. Few properties can honestly say they offer this many hunting options in one place. Conveniently located just 67 +/- miles southwest of Wichita, 52 +/- miles southeast of Kingman, and 26 +/- miles southeast of Harper, the farm strikes the perfect balance between accessibility and privacy. It's close enough for a quick weekend trip, yet secluded enough to feel like your own private retreat. Properties that combine strong tillable income, diverse habitat, reliable water, and true multi-species hunting are increasingly hard to find in this part of Kansas. This is more than just a farm—it's a legacy property with everything you could want in a premier hunting tract. Don't miss the chance to make it yours! All showings are by appointment only. If you would like more information or would like to schedule a private viewing please contact Jacob Lemons at [\(620\) 501-3688](tel:6205013688). Disclaimer: The boundary lines shown are approximate and are provided for general reference only. Arrowhead Land Company makes no representations or warranties, express or implied, as to the accuracy, completeness, or reliability of those property lines. Buyers are advised to obtain an independent survey to verify exact property boundaries. \*Map coming soon.

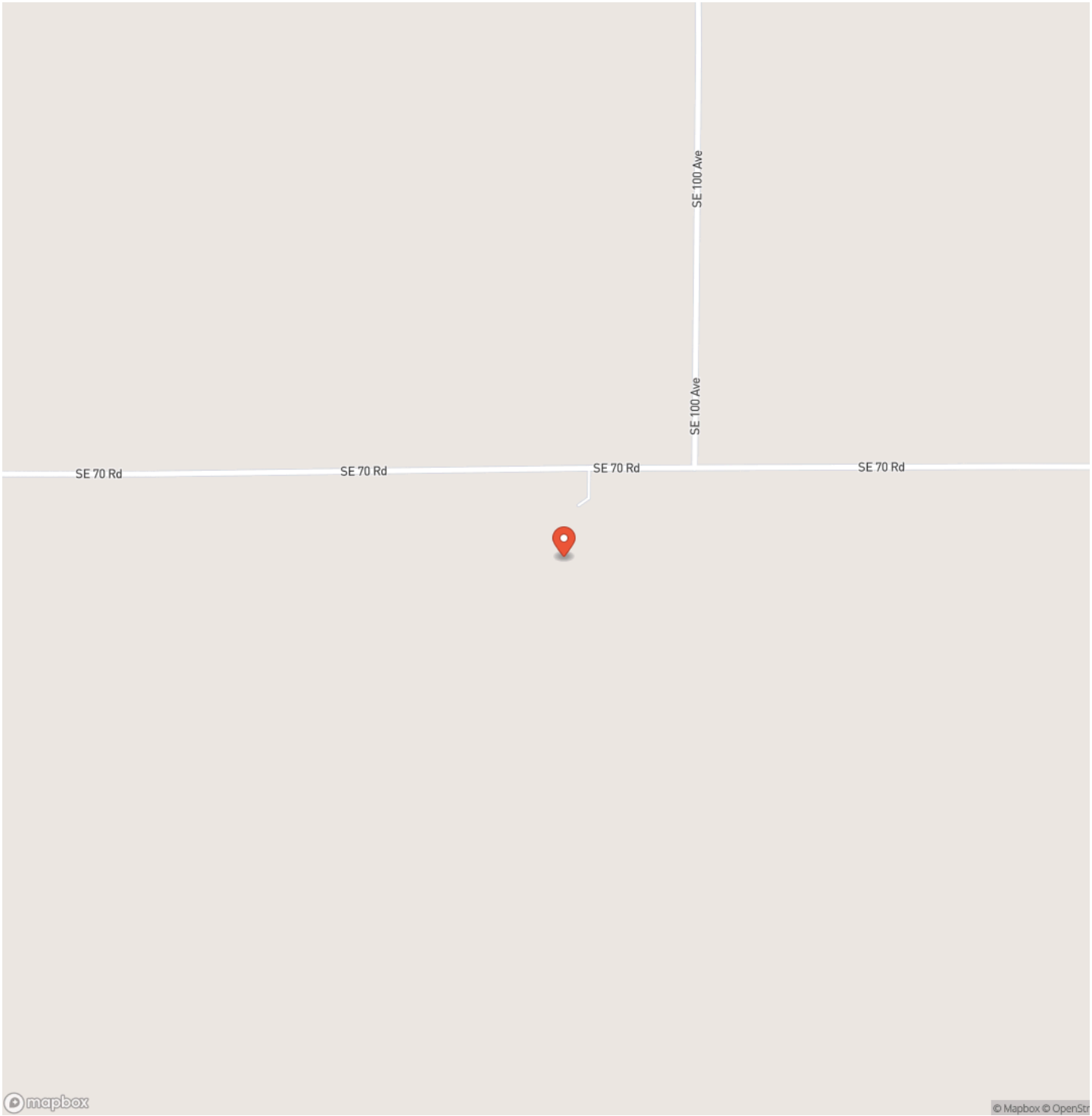


Ultimate Recreational Haven  
Bluff City, KS / Harper County

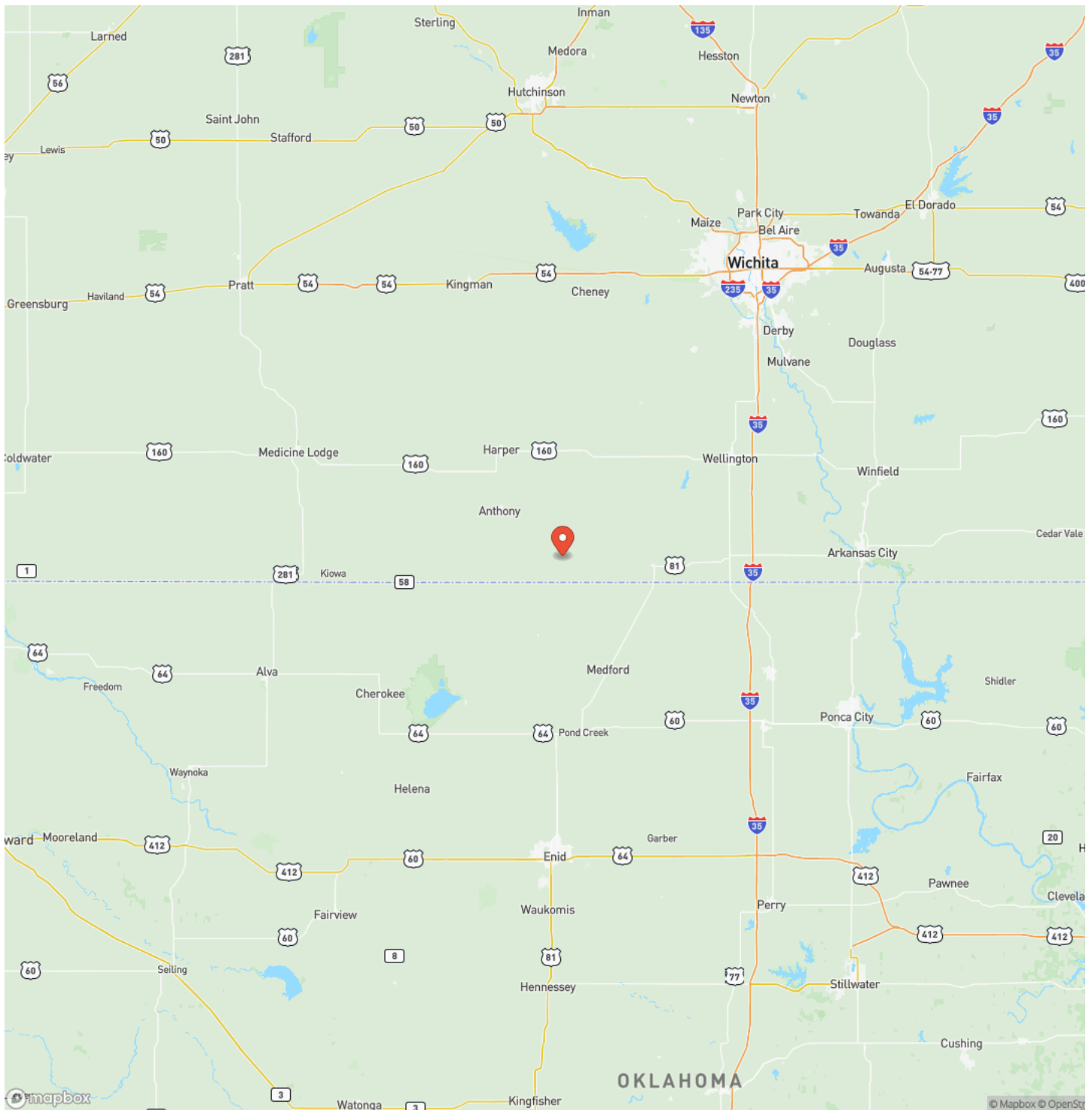
---



# Locator Map



## Locator Map





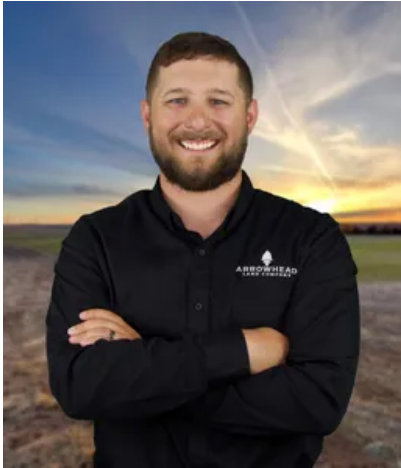
## Satellite Map



## Ultimate Recreational Haven Bluff City, KS / Harper County

## LISTING REPRESENTATIVE

**For more information contact:**



### Representative

Jacob Lemons

## Mobile

(580) 727-5019

## Office

(620) 501-3688

## Email

jacob.lemons@arrowheadlandcompany.com

**Address**

## City / State / Zip

Laverne, OK 73848

## NOTES

[illegible]



[illegible]

## **DISCLAIMERS**

Information in this brochure is provided solely for information purposes and does not constitute an offer to sell or advertise real estate outside the states in which broker or agent licensed. The information presented has been obtained from sources deemed to be reliable, but is not guaranteed or warranted by the agent, broker, or the sellers of these properties. This offering is subject to errors, omissions, prior sale, price change, correction or withdrawal from the market without notice. All references to age, square footage, income, expenses, acreage, carrying capacity, and land classification, etc. are approximate. Prospective buyers are chargeable with and expected to conduct their own independent investigation of the information and the property and to rely only on those results. Sellers reserve the right to accept or reject any and all offers without liability to any buyer or cooperating broker.

Maps are provided for illustration purposes only, the accuracy is not warranted. Parcels on interactive maps are not adjusted to match aerial backgrounds. This information is for reference purposes only and is not a legal document. Data maps contain errors. The seller and seller's agent are making known to all potential buyers that there may be variations between the location of the existing fence lines and the legal description of the deeded property. Seller and seller's agent make no warranties with regard to the location of the fence lines in relationship to the deeded property lines, nor does the Seller make any warranties or representations with regard to the specific acreage contained within the fenced property lines. Seller is selling the property in an "as is" condition, which includes the location of the fences as they exist. Boundaries shown on the accompanying maps are approximate, based on county parcel data. The maps are not to scale. The accuracy of the maps is not guaranteed. Prospective buyers are encouraged to verify fence lines, deeded property lines and acreages using a licensed surveyor at their own expense.

---

**Arrowhead Land Company**  
205 E Dewey Ave  
Sapulpa, OK 74066  
(833) 873-2452  
[www.arrowheadlandcompany.com](http://www.arrowheadlandcompany.com)

---

