

Lyman County, SD 160 Acres
300th Avenue
Presho, SD 57568

\$800,000
160± Acres
Lyman County



Lyman County, SD 160 Acres
Presho, SD / Lyman County

SUMMARY

Address

300th Avenue

City, State Zip

Presho, SD 57568

County

Lyman County

Type

Farms

Latitude / Longitude

43.735135 / -100.165004

Acreage

160

Price

\$800,000

Property Website

<https://talltinesproperties.com/property/lyman-county-sd-160-acres-lyman-south-dakota/85974/>



Lyman County, SD 160 Acres Presho, SD / Lyman County

PROPERTY DESCRIPTION

Presenting a rare opportunity to own highly productive South Dakota farmland in the heart of Lyman County. This 160-acre tract offers a strong balance of productivity, accessibility, and income potential, making it a valuable addition to any farm operation or investment portfolio.

With a Soil Productivity Index (CPI) of 78.44, this property features fertile, tillable acres well-suited for row crop production. The soil quality supports strong yields and consistent income generation, whether you farm it yourself or lease it out.

An income-producing asset, this farm comes with the option for a lease-back agreement with the current owner, providing a seamless transition and potential for immediate ROI. Whether you're looking to expand your existing operation or secure a reliable land investment, this offering checks all the boxes.

Located approximately 17 miles southwest of Presho, the property boasts excellent gravel road access off 300th Avenue, ensuring easy year-round entry for farm equipment and grain hauling. Its rural location offers both privacy and productivity without sacrificing accessibility.

Farmland in this region rarely comes to market, and when it does, it moves quickly. Don't miss this chance to invest in proven ground with built-in income and long-term upside.

Contact Tall Tines Trophy Properties today to schedule a private showing or request additional details.

Features

- Highly productive farmland
- 78.44 CPI (Soil Productivity)
- Income-producing property
- Lease-back option with the seller
- Approximately 17 miles southwest of Presho
- Excellent gravel road access off 300th Avenue

Area Information

[South Dakota Game Fish and Parks](#)

[Lyman County](#)

[City of Presho](#)

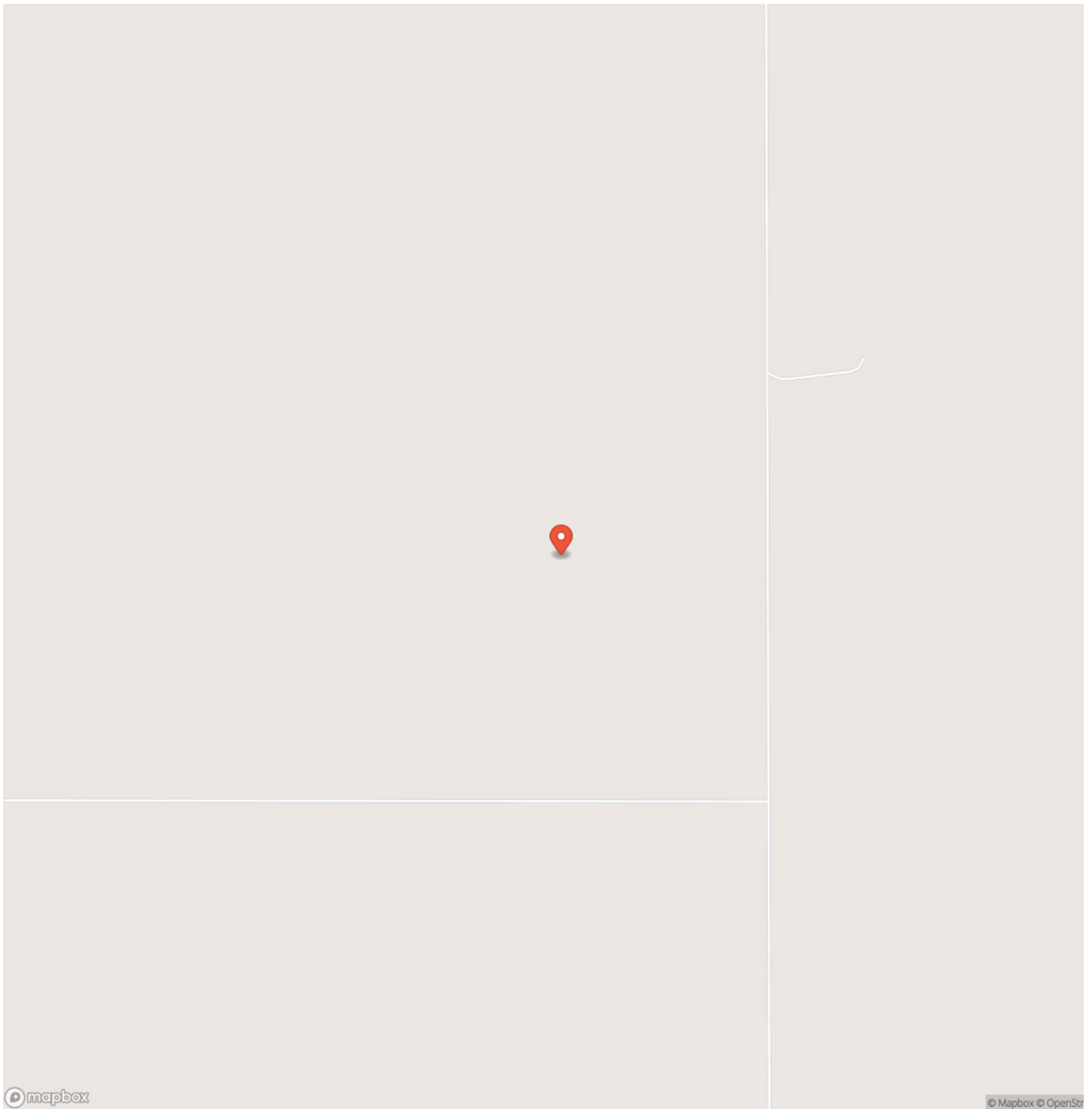
[Lyman School District](#)



Lyman County, SD 160 Acres
Presho, SD / Lyman County



Locator Map

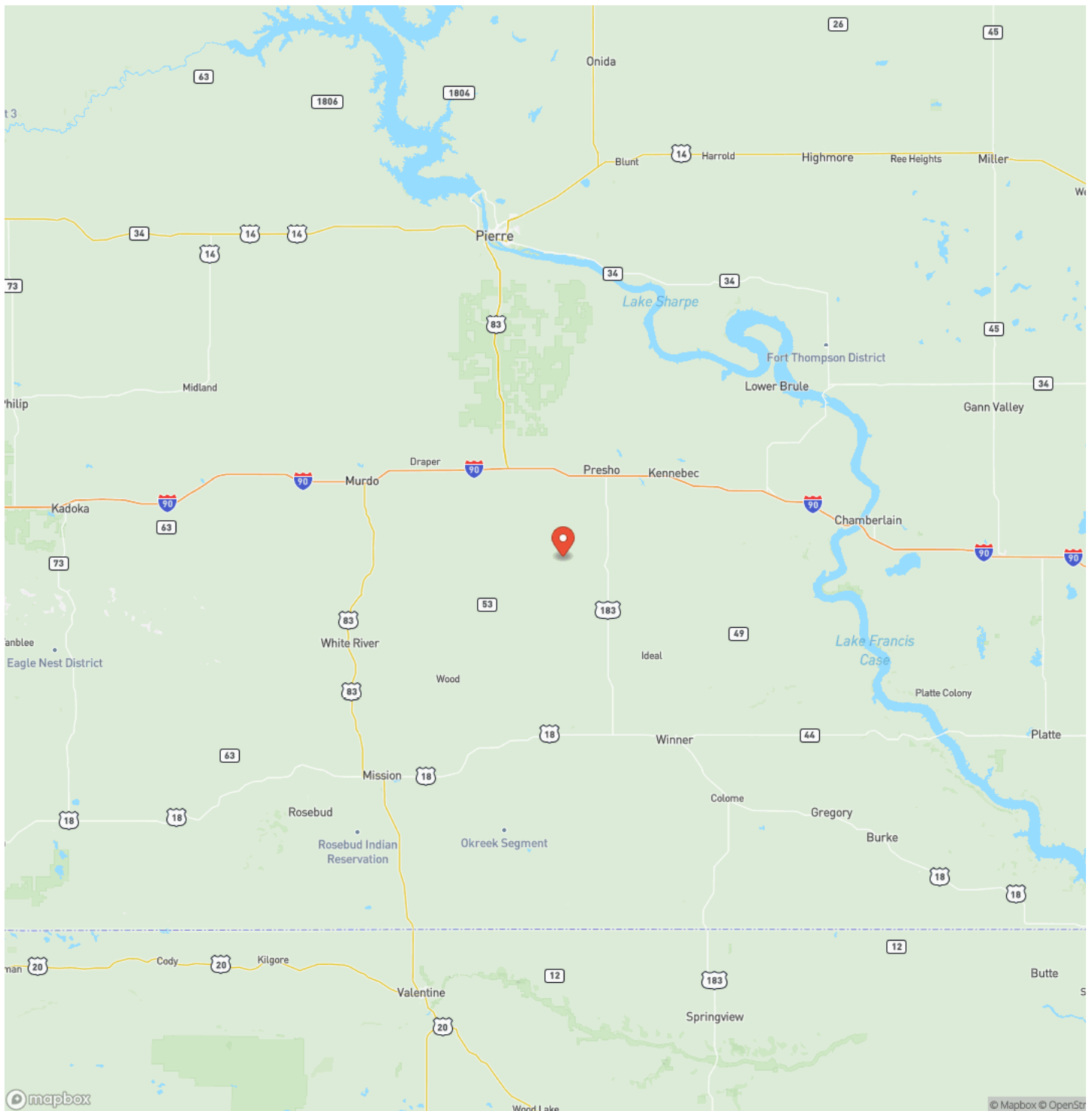


© mapbox

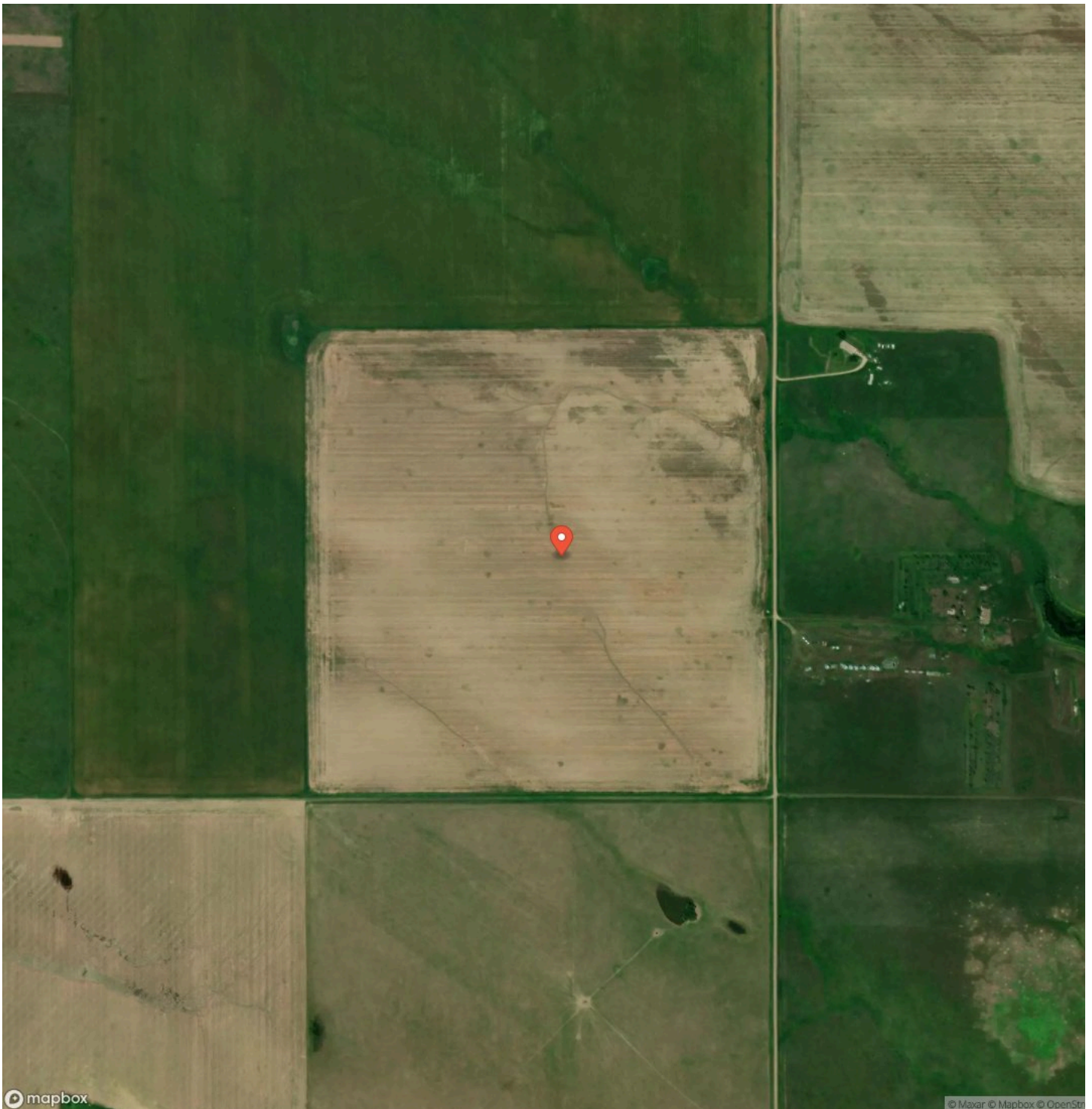
© Mapbox © OpenStr



Locator Map



Satellite Map



LISTING REPRESENTATIVE

For more information contact:



Representative

Mark Schweigert

Mobile

(605) 840-9578

Office

(605) 840-9578

Email

mark.schweigert@talldinesproperties.com

Address

208 S Main Street

City / State / Zip

NOTES

[illegible]

This image shows a single sheet of white paper with horizontal ruling lines. The lines are evenly spaced and run across the width of the page. There are no margins, text, or other markings on the paper.



<https://talitinesproperties.com/>

DISCLAIMERS

When buying a property listed by Tall Tines Trophy Properties, the broker who represents the buyer must be identified at the first point of contact and must be present at all showings unless prior arrangements have been made with Tall Tines Trophy Properties to qualify for compensation. If these requirements are not followed, the selling broker may lose any compensation, as decided solely by Tall Tines Trophy Properties.



Tall Tines Trophy Properties
208 S Main Street
Winner, SD 57580
(605) 840-9578
<https://talltinesproperties.com/>

