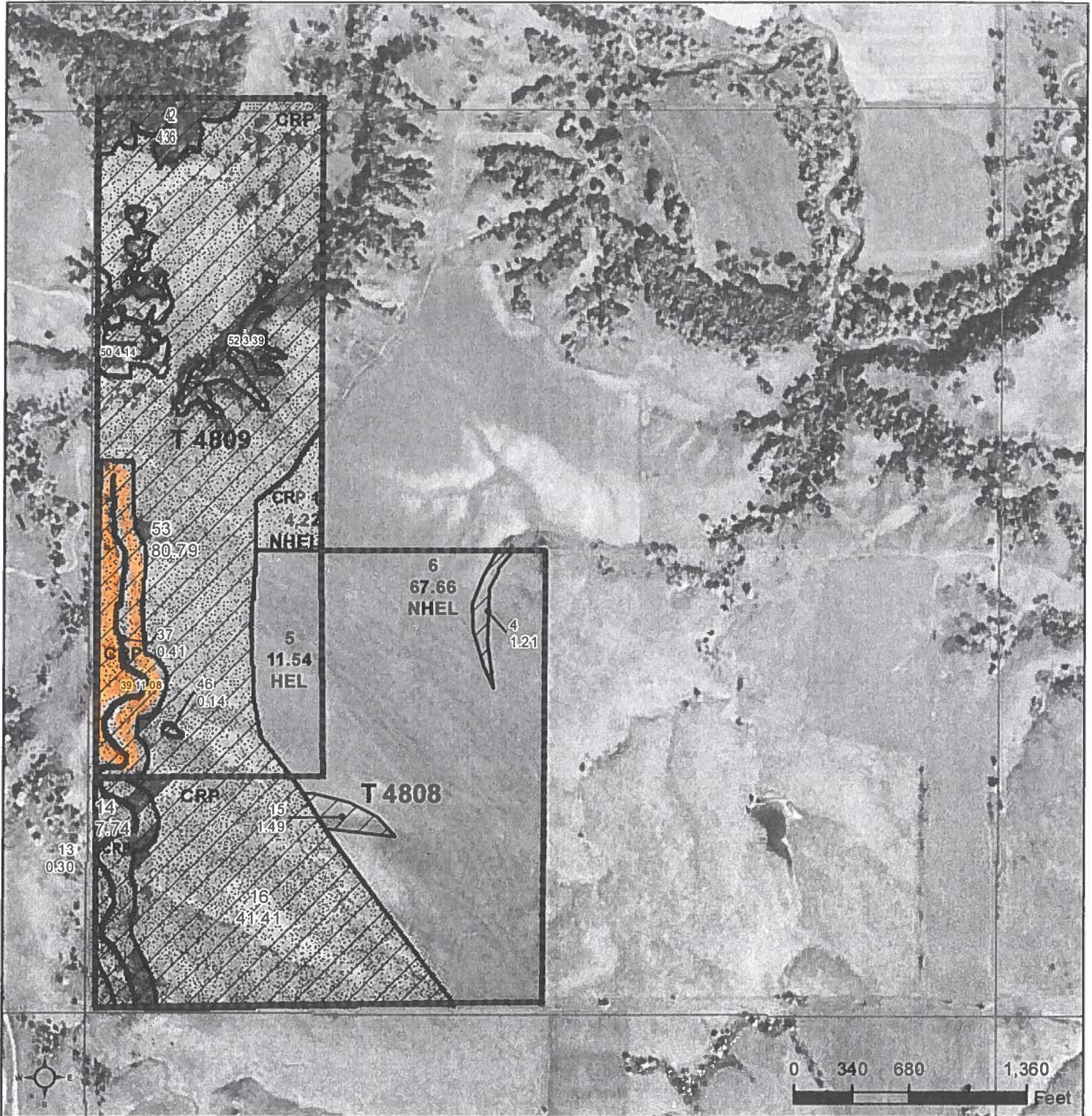




United States
Department of
Agriculture

Gregory County, South Dakota



- Common Land Unit**
- Non-Cropland
 - Cropland
 - CRP
 - Tract Boundary
 - PLSS

- Wetland Determination Identifiers**
- Restricted Use
 - Limited Restrictions
 - Exempt from Conservation
 - Compliance Provisions

Unless otherwise noted,
crops listed below are:
Non-irrigated
Intended for Grain
Corn = Yellow
Soybeans = Common
Wheat - HRS or HRW
Sunflowers = Oil or Non

Producer initial _____
Date _____

2025 Program Year

Map Created April 14, 2025

Farm 5191

13-95N-71W-Gregory

United States Department of Agriculture (USDA) Farm Service Agency (FSA) maps are for FSA Program administration only. This map does not represent a legal survey or reflect actual ownership; rather it depicts the information provided directly from the producer and/or National Agricultural Imagery Program (NAIP) imagery. The producer accepts the data 'as is' and assumes all risks associated with its use. USDA-FSA assumes no responsibility for actual or consequential damage incurred as a result of any user's reliance on this data outside FSA Programs. Wetland identifiers do not represent the size, shape, or specific determination of the area. Refer to your original determination (CPA-026 and attached maps) for exact boundaries and determinations or contact USDA Natural Resources Conservation Service (NRCS).