

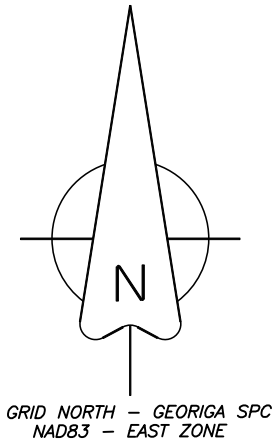
SURVEYORS CERTIFICATE:

As required by subsection (d) of O.C.G.A. Section 15-6-67, this plat has been prepared by a land surveyor and approved by all applicable local jurisdictions for recording as evidenced by approval certificates, signatures, stamps, or statements hereon. Such approvals or affirmations should be confirmed with the appropriate governmental bodies by any purchaser or user of this plat as to intended use of any parcel. Furthermore, the undersigned land surveyor certifies that this plat complies with the minimum technical standards for property surveys in Georgia as set forth in the rules and regulations of the Georgia Board of Registration for Professional Engineers and Land Surveyors and as set forth in O.C.G.A. Section 15-6-67.

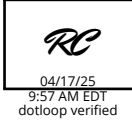
Everett Tomberlin
 EVERETT TOMBERLIN RLS#2922

4/3/2025

DATE:



N:583599.466
 E:568713.012



RESERVED FOR THE CLERK OF COURT

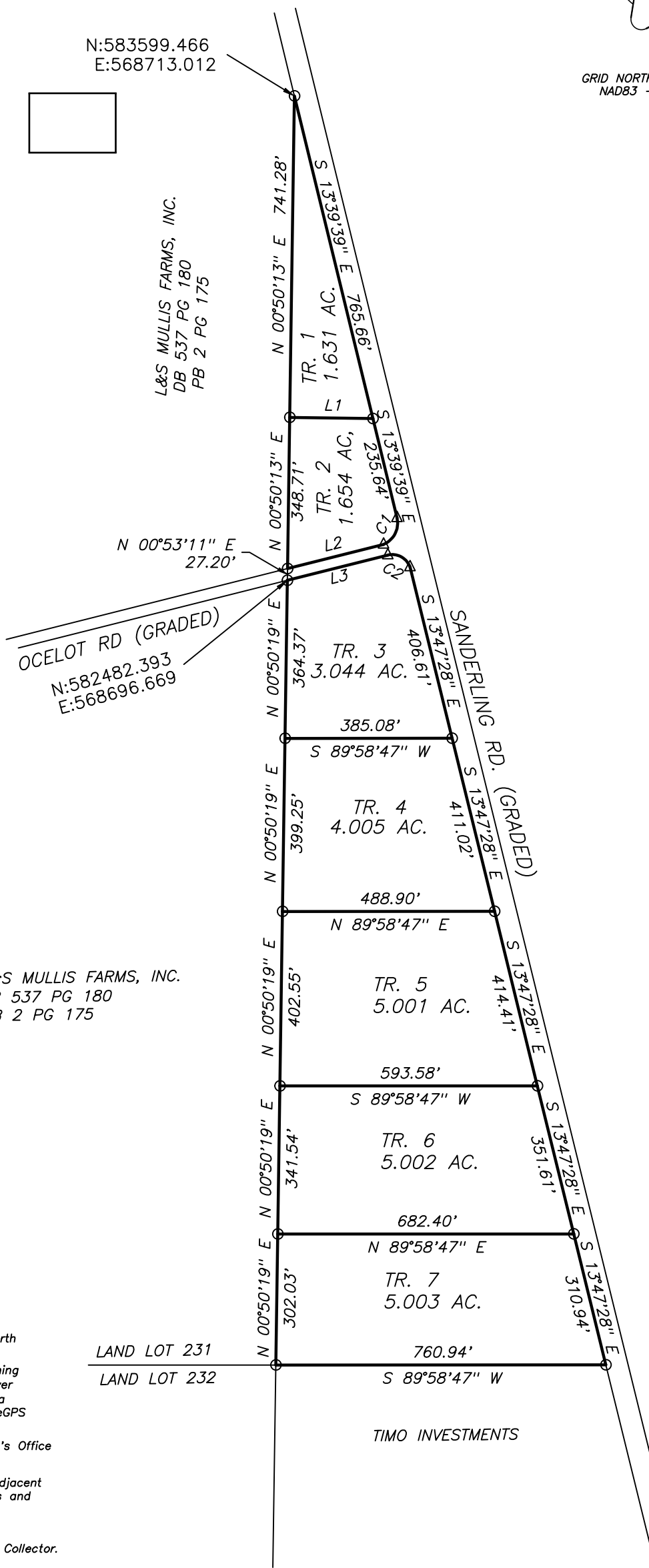
Field Precision: This entire survey was completed using GPS Base and Rover, Real Time Kinematic, surveying methods using multi-frequency receivers. The field data for this boundary survey has a Relative Positional Accuracy of 0.05 feet or less, horizontally at the 95% confidence level.

LEGEND:

- △ COMPUTED POINT
- IRON ROD FOUND
- IRON ROD SET
- CONCRETE MONUMENT FOUND

CURVE	ARC LENGTH	RADIUS	CHORD BEARING	CHORD LENGTH
C1	74.55'	53.45'	S 26°54'56" W	68.65'
C2	63.76'	43.04'	S 61°38'04" E	58.09'

LINE	BEARING	DISTANCE
L1	S 89°09'47" E	191.68'
L2	S 75°52'41" W	228.22'
L3	N 75°52'39" E	238.92'

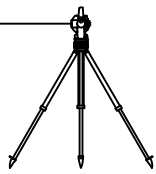


L&S MULLIS FARMS, INC.
 DB 537 PG 180
 PB 2 PG 175

SURVEY NOTES

1. Horizontal Datum is Georgia State Plane Coordinate System of 1985, East Zone, North America Datum of 1983 (NAD83.)
2. Basis of Bearings and Horizontal Control were obtained utilizing GPS (global positioning systems.) The equipment used to obtain this data was a Carlson BRx7 GNSS receiver [RTK Accuracy (Horizontal: 8mm +1ppm RMS) (Vertical: 15mm+ 1ppm RMS)] with a Carlson RT4 data collector receiving RTK corrections via Verizon Network from the eGPS Solutions Real Time Network.
3. All deed book references shown hereon are recorded in the Clerk of Superior Court's Office of Bacon County, Georgia.
4. This survey was prepared without the benefit of an abstract of title. Subject and adjacent property owners' deed references were provided by Everett Tomberlin and Associates and are not guaranteed as to accuracy or completeness.
5. The equipment used in obtaining the linear and angular measurements used in the preparation of this plat was: Carlson BRX 7 Base and Rover, and Carlson RT4 Data Collector.
6. Error of closure field: GPS
 Error of closure plat: 1' in 326,556'

**EVERETT
 TOMBERLIN**



LAND SURVEYING

EVERETT TOMBERLIN REGISTERED LAND SURVEYOR #2922
 1144 RADIO STATION ROAD
 ALMA, GEORGIA 31510
 PH. 912-288-7416

SURVEY FOR
 TIMO INVESTMENTS

LOCATED IN LAND LOT 231 OF
 THE 5TH LAND DISTRICT
 OF
 BACON COUNTY, GEORGIA.



SURVEY DATE: 4/4/2025 CHECKED BY: ET
 DATE DRAWN: 4/3/2025 JOB REF: BACONSPILT
 DRAWN BY: EVERETT CRD REF: RYKERBACON