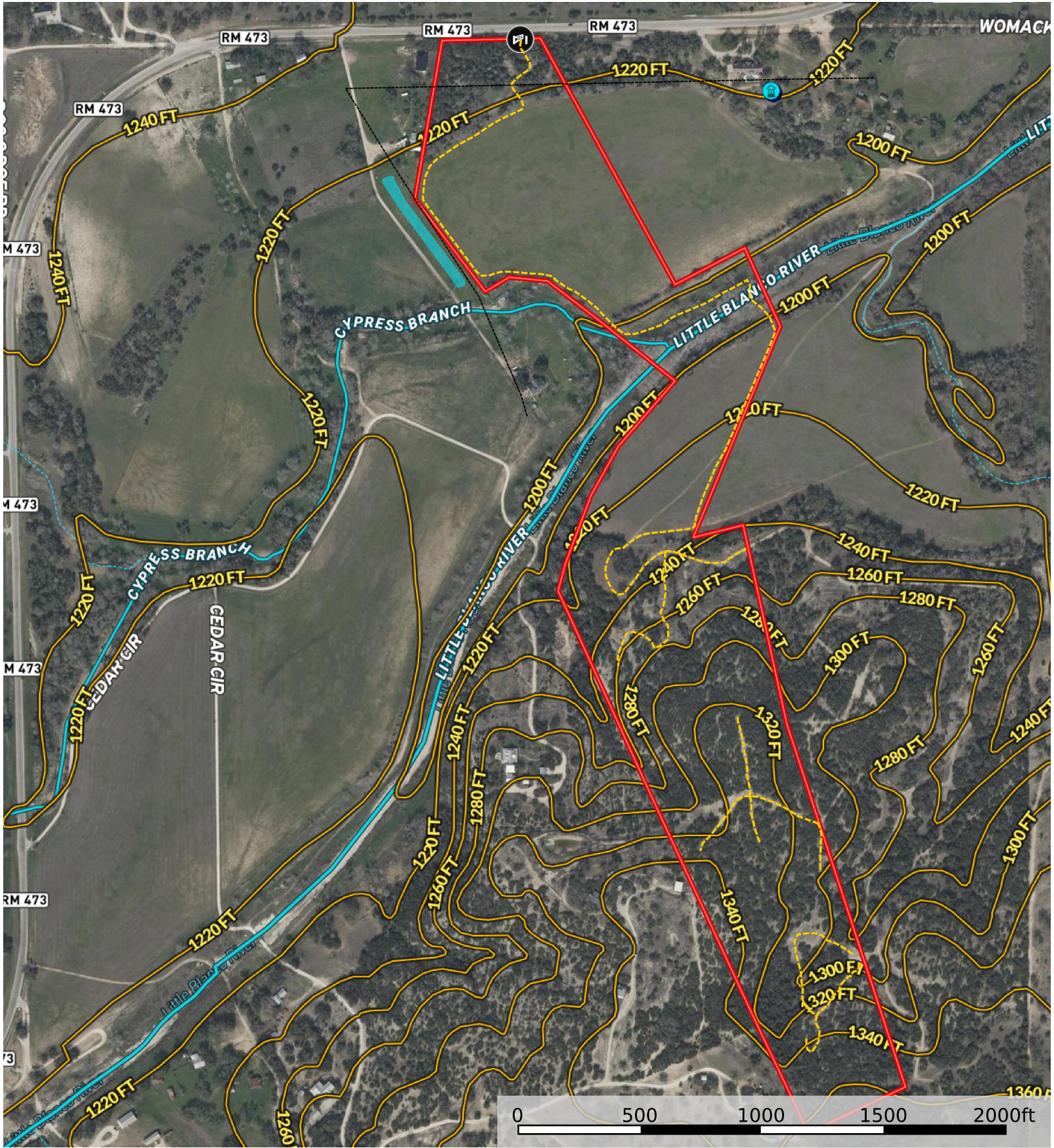


Blanco 63 - Little Blanco River

Texas, AC +/-



Gate

Road / Trail

Transmission Line

Boundary

Stream, Intermittent

River/Creek

Water Body

Water Wells

Voltage Unavailable

Voltage 0 - 99 KV

Voltage 100 - 161 KV

Voltage 220 - 287 KV

Voltage 345 KV

Voltage 500 KV

Voltage 735 KV+