

**Duck Camp at Bayou Meto Long Pond Access**  
23 Greenhead Ln  
Altheimer, AR 72004

**\$135,000**  
0.940± Acres  
Arkansas County



**MORE INFO ONLINE:**

**[ArkansasLandForSale.com](http://ArkansasLandForSale.com)**





**Duck Camp at Bayou Meto Long Pond Access**  
**Altheimer, AR / Arkansas County**

---

**SUMMARY**

**Address**

23 Greenhead Ln

**City, State Zip**

Altheimer, AR 72004

**County**

Arkansas County

**Type**

Hunting Land, Residential Property, Recreational Land, Single Family, Lot, Business Opportunity

**Latitude / Longitude**

34.236632 / -91.667146

**Dwelling Square Feet**

2320

**Bedrooms / Bathrooms**

3 / 2

**Acreage**

0.940

**Price**

\$135,000

**Property Website**

<https://arkansaslandforsale.com/property/duck-camp-at-bayou-meto-long-pond-access-arkansas-arkansas/51272/>



**MORE INFO ONLINE:**

**ArkansasLandForSale.com**



## Duck Camp at Bayou Meto Long Pond Access Altheimer, AR / Arkansas County

---

### **PROPERTY DESCRIPTION**

Duck Camp for sale located on Greenhead Ln in Altheimer Ar at the Long Pond Access at Bayou Meto. This camp is sitting on just under an acre lot and is 1724 sf of living space with an additional 596 sf of covered deck area. There are 3 beds and 2 bathrooms with a large living area added on with plenty of room added on for you and all your buddies to hang out after a morning of killing ducks. There is a large boat shed that can easily fit 5 boats to keep all your gear dry and out of the weather. If theres not enough room for all of your friends inside the camp dont worry, there are 4 camper hookups ready to be used.

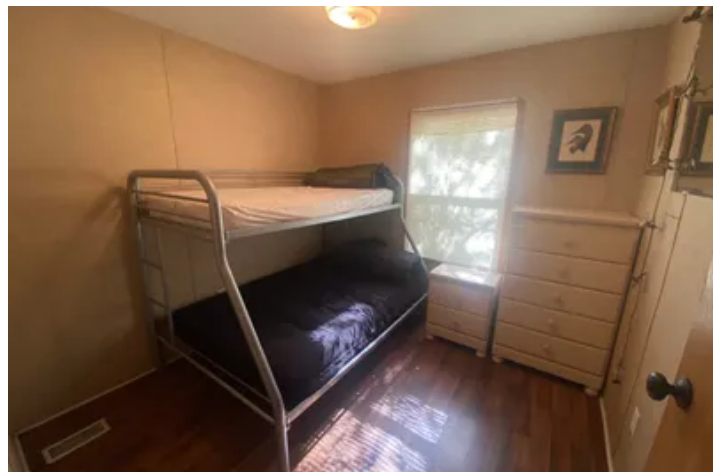
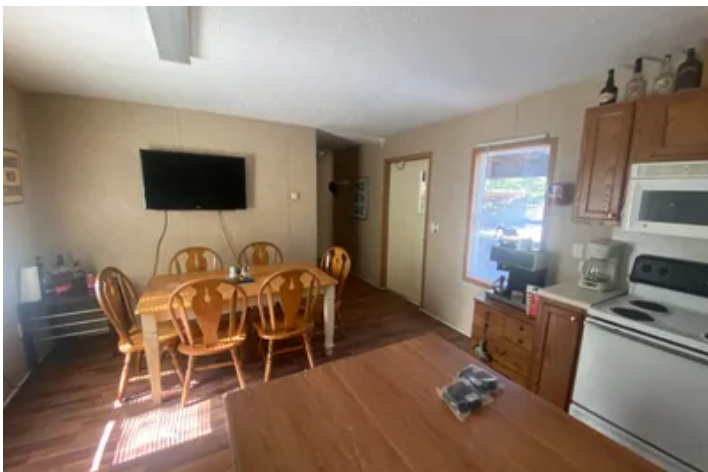
For more information or to schedule a tour call listing agent Nick Newton at [501-276-8409](tel:501-276-8409) .





**Duck Camp at Bayou Meto Long Pond Access  
Altheimer, AR / Arkansas County**

---



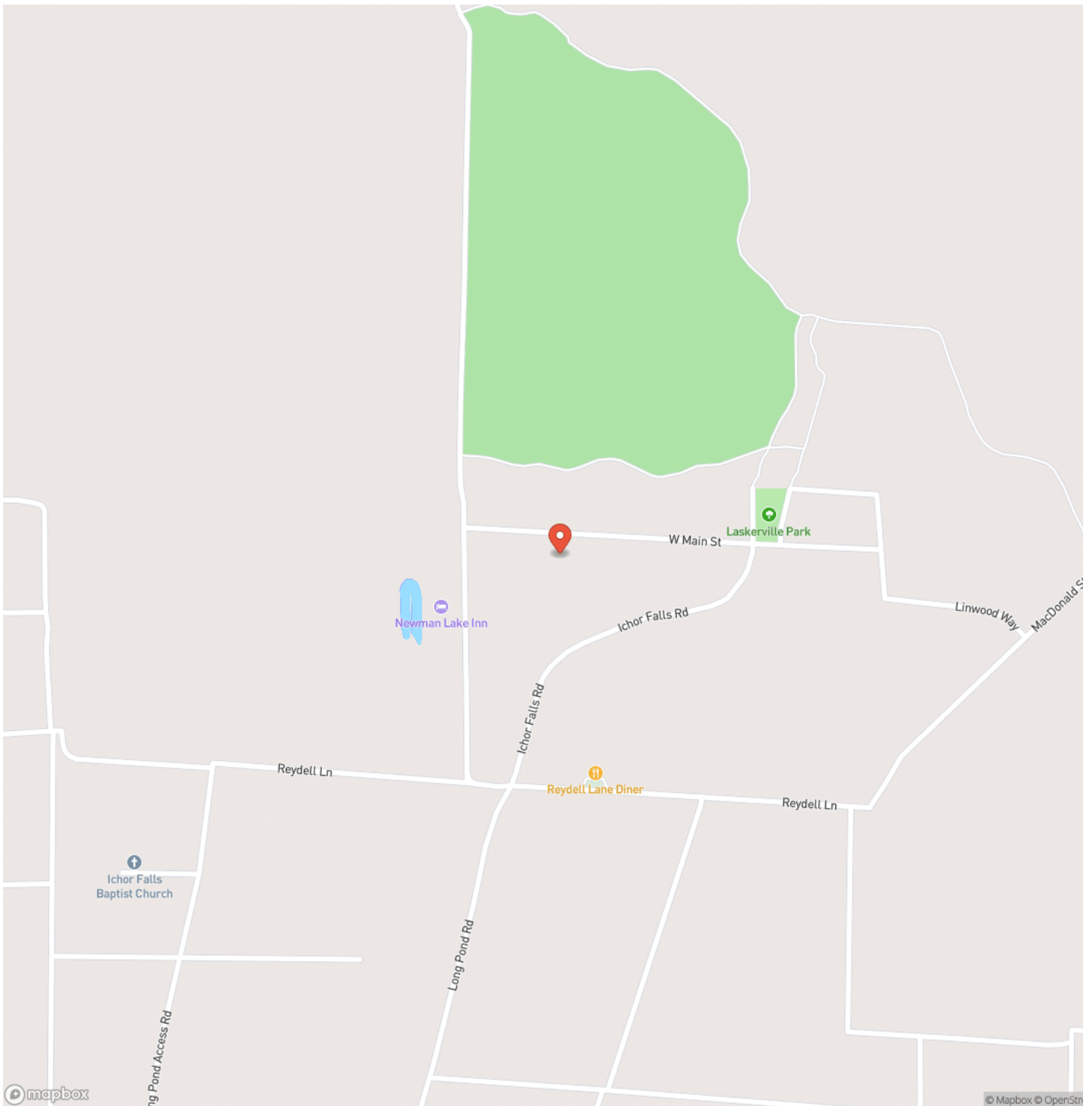
**MORE INFO ONLINE:**

**[ArkansasLandForSale.com](http://ArkansasLandForSale.com)**

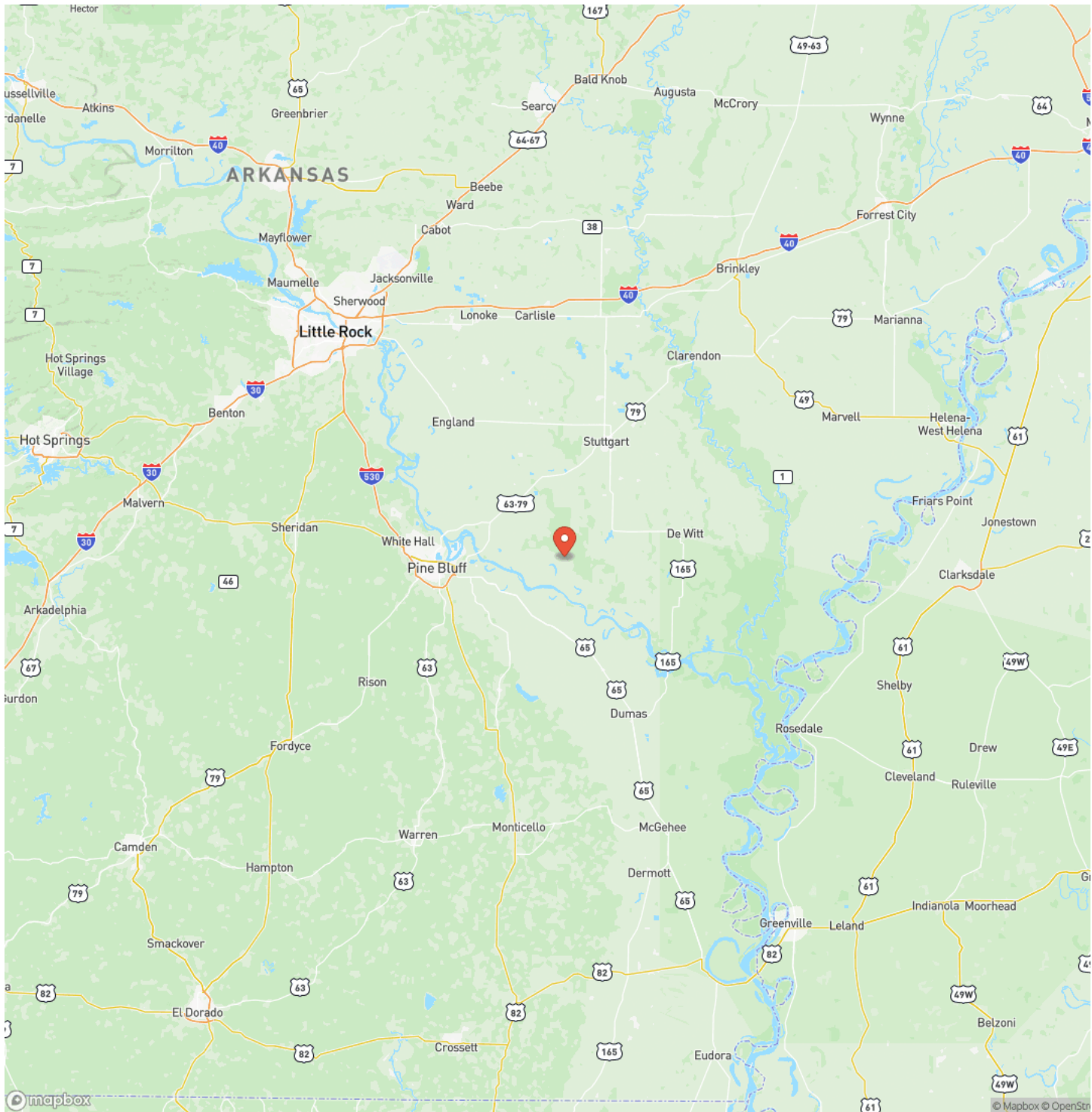




## Locator Map



## Locator Map





## Satellite Map



## Duck Camp at Bayou Meto Long Pond Access Altheimer, AR / Arkansas County

## LISTING REPRESENTATIVE

**For more information contact:**



### Representative

Nick Newton

## Mobile

(501) 276-8409

## Email

nick@arkansas.land

**Address**

## City / State / Zip

Hot Springs, AR 71913

## NOTES

[illegible]



## This image shows a single sheet of white paper with horizontal ruling lines. The lines are evenly spaced and run across the width of the page. There are no margins, text, or other markings on the paper.



**MORE INFO ONLINE:**

**ArkansasLandForSale.com**

## **DISCLAIMERS**

Information in this brochure is provided solely for information purposes and does not constitute an offer to sell or advertise real estate outside the states in which broker or agent licensed. The information presented has been obtained from sources deemed to be reliable, but is not guaranteed or warranted by the agent, broker, or the sellers of these properties. This offering is subject to errors, omissions, prior sale, price change, correction or withdrawal from the market without notice. All references to age, square footage, income, expenses, acreage, carrying capacity, and land classification, etc. are approximate. Prospective buyers are chargeable with and expected to conduct their own independent investigation of the information and the property and to rely only on those results. Sellers reserve the right to accept or reject any and all offers without liability to any buyer or cooperating broker.

Maps are provided for illustration purposes only, the accuracy is not warranted. Parcels on interactive maps are not adjusted to match aerial backgrounds. This information is for reference purposes only and is not a legal document. Data maps contain errors. The seller and seller's agent are making known to all potential buyers that there may be variations between the location of the existing fence lines and the legal description of the deeded property. Seller and seller's agent make no warranties with regard to the location of the fence lines in relationship to the deeded property lines, nor does the Seller make any warranties or representations with regard to the specific acreage contained within the fenced property lines. Seller is selling the property in an "as is" condition, which includes the location of the fences as they exist. Boundaries shown on the accompanying maps are approximate, based on county parcel data. The maps are not to scale. The accuracy of the maps is not guaranteed. Prospective buyers are encouraged to verify fence lines, deeded property lines and acreages using a licensed surveyor at their own expense.





---

**Arkansas Land Company**  
2024 North Main Street  
North Little Rock, AR 72114  
(501) 604-4565  
[ArkansasLandForSale.com](http://ArkansasLandForSale.com)

---

