

47 +/- Acres with large pond in Polk Co Ar
300 Polk Co Rd 22
Cove, AR 71937

\$315,000
47± Acres
Polk County



47 +/- Acres with large pond in Polk Co Ar Cove, AR / Polk County

SUMMARY

Address

300 Polk Co Rd 22

City, State Zip

Cove, AR 71937

County

Polk County

Type

Hunting Land, Recreational Land, Timberland, Undeveloped Land, Ranches

Latitude / Longitude

34.413995 / -94.423084

Acreage

47

Price

\$315,000

Property Website

<https://arkansaslandforsale.com/property/47-acres-with-large-pond-in-polk-co-ar-polk-arkansas/56485/>



47 +/- Acres with large pond in Polk Co Ar Cove, AR / Polk County

PROPERTY DESCRIPTION

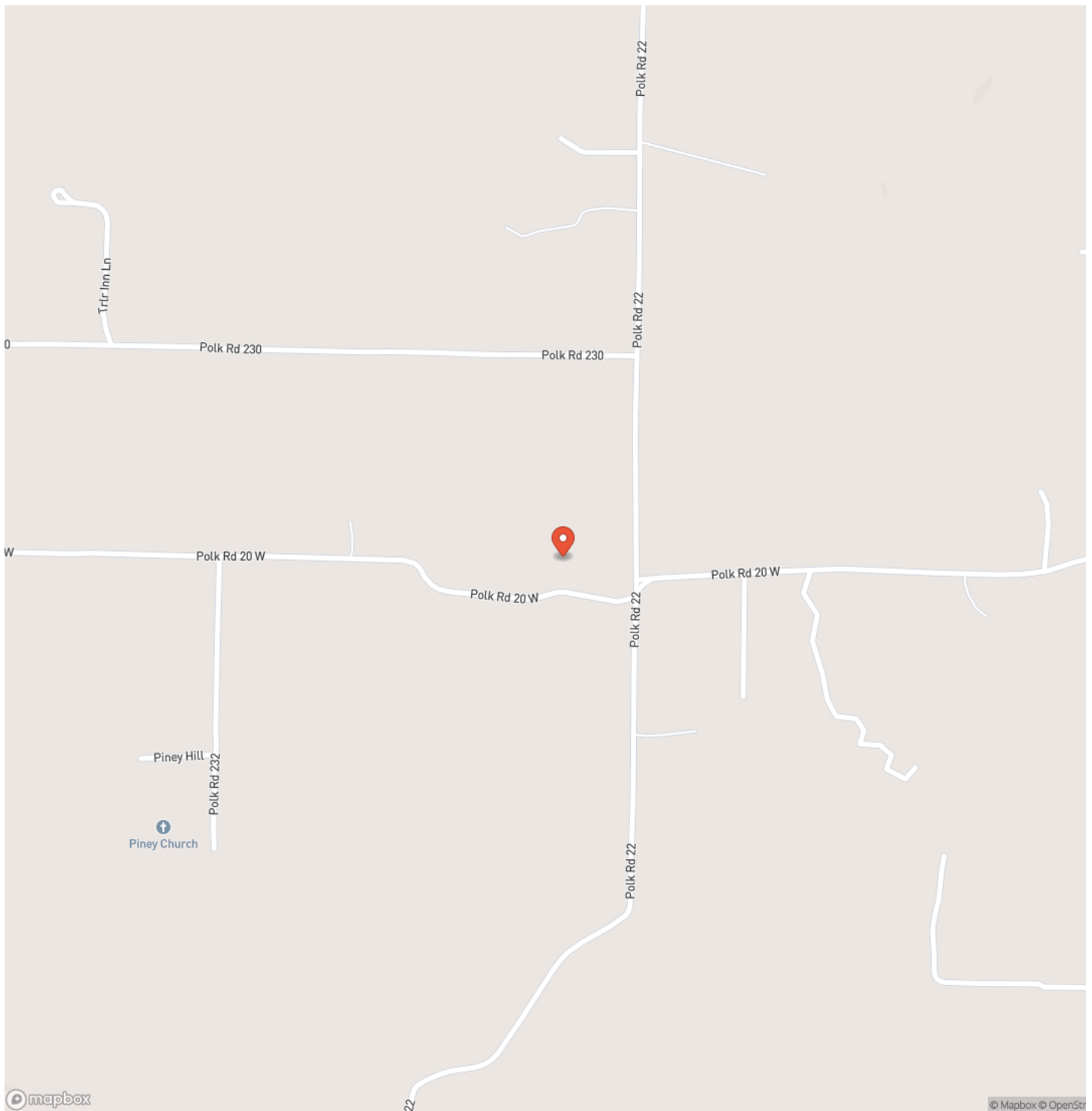
This 47 +/- Acres in Polk Co near Cove, Ar offers beautiful landscapes for someone looking for the right place to build their forever home. As you drive into one of the four gated entrances you will be met with an area of just over 4 acres of pasture that is surrounded by mature, towering hardwood trees looking down over the pond. There is a large barn that sits on the edge where you can store tractors, implements or any other equipment. The property has been well maintained with atv trails allowing access to every corner. As you take the trails across the pond to the northern side of the property, you will find younger hardwoods with mixed pines passing by deer at almost every turn. One of the nicest features of this property is having paved road access on three sides, so no need to worry about dust from the few vehicles that pass by this quiet, secluded property. With power and a well already in place there are endless opportunities here. Not to mention you are only 15 minutes to the nearest Ouachita National Forest access and 25 minutes from the Cossatot River State Park Natural Area. For more information or to schedule your private tour, call Listing Agent Nick Newton at [501-276-8409](tel:501-276-8409).



47 +/- Acres with large pond in Polk Co Ar
Cove, AR / Polk County

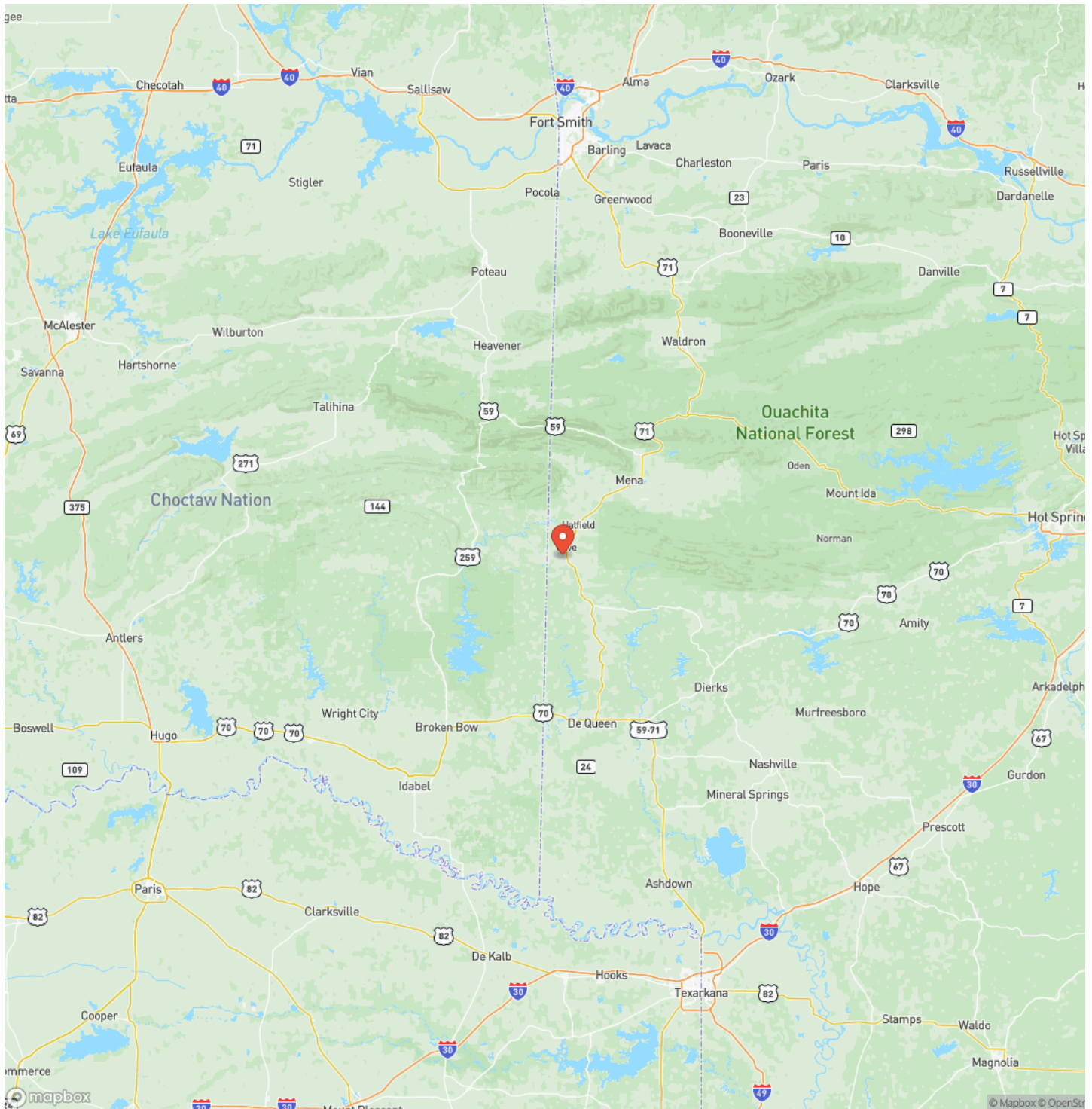


Locator Map



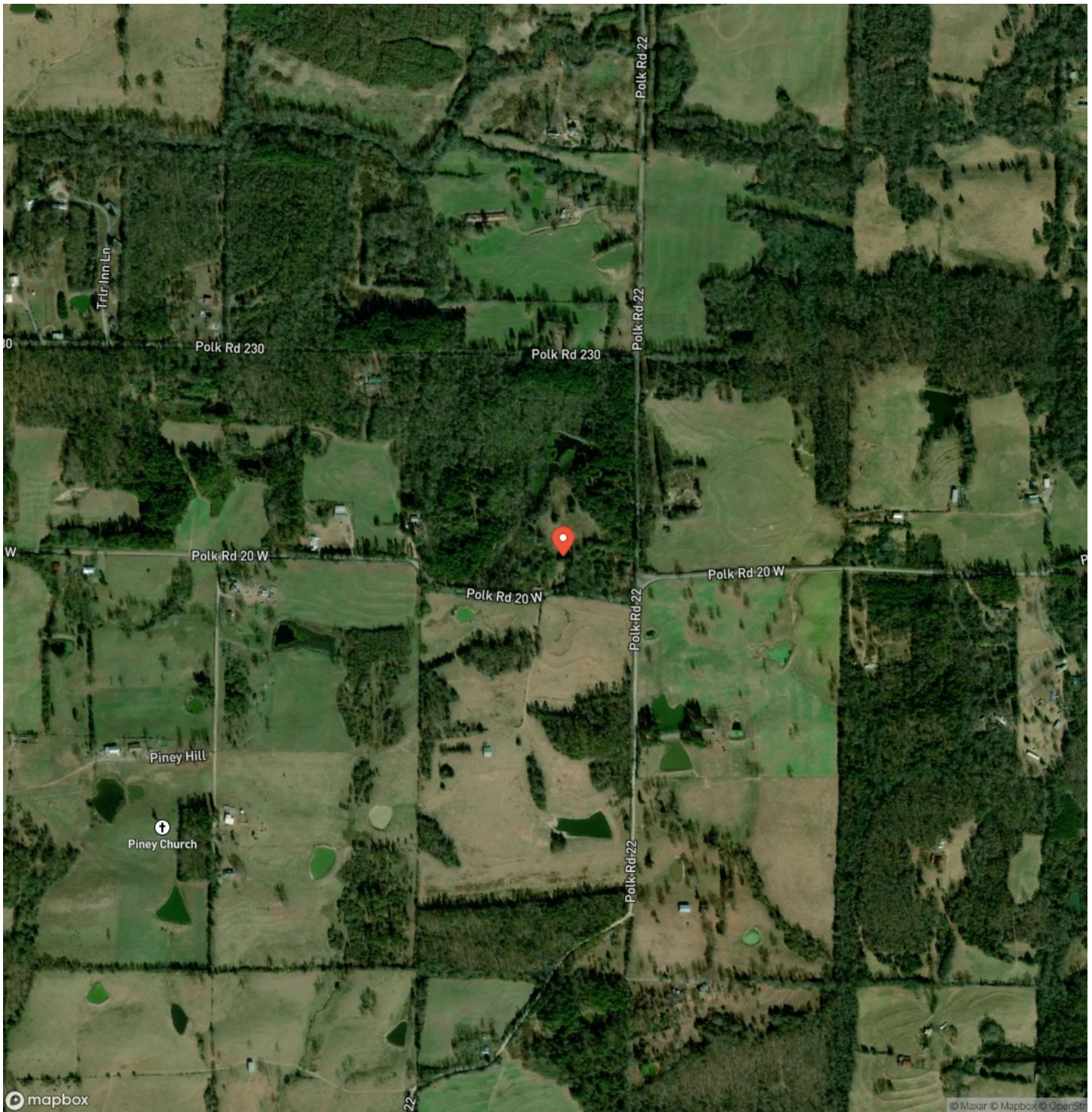
47 +/- Acres with large pond in Polk Co Ar
Cove, AR / Polk County

Locator Map



47 +/- Acres with large pond in Polk Co Ar
Cove, AR / Polk County

Satellite Map



**47 +/- Acres with large pond in Polk Co Ar
Cove, AR / Polk County**

LISTING REPRESENTATIVE

For more information contact:



Representative

Nick Newton

Mobile

(501) 276-8409

Email

nick@arkansas.land

Address

City / State / Zip

Hot Springs, AR 71913

NOTES

This image shows a blank sheet of white paper with horizontal ruling lines. The lines are evenly spaced and run across the width of the page. There are no margins, text, or other markings on the paper.

This image shows a single sheet of white paper with horizontal blue ruling lines. The lines are evenly spaced and run across the width of the page. There are no margins, text, or other markings on the paper.



MORE INFO ONLINE:
ArkansasLandForSale.com

DISCLAIMERS

Information in this brochure is provided solely for information purposes and does not constitute an offer to sell or advertise real estate outside the states in which broker or agent licensed. The information presented has been obtained from sources deemed to be reliable, but is not guaranteed or warranted by the agent, broker, or the sellers of these properties. This offering is subject to errors, omissions, prior sale, price change, correction or withdrawal from the market without notice. All references to age, square footage, income, expenses, acreage, carrying capacity, and land classification, etc. are approximate. Prospective buyers are chargeable with and expected to conduct their own independent investigation of the information and the property and to rely only on those results. Sellers reserve the right to accept or reject any and all offers without liability to any buyer or cooperating broker.

Maps are provided for illustration purposes only, the accuracy is not warranted. Parcels on interactive maps are not adjusted to match aerial backgrounds. This information is for reference purposes only and is not a legal document. Data maps contain errors. The seller and seller's agent are making known to all potential buyers that there may be variations between the location of the existing fence lines and the legal description of the deeded property. Seller and seller's agent make no warranties with regard to the location of the fence lines in relationship to the deeded property lines, nor does the Seller make any warranties or representations with regard to the specific acreage contained within the fenced property lines. Seller is selling the property in an "as is" condition, which includes the location of the fences as they exist. Boundaries shown on the accompanying maps are approximate, based on county parcel data. The maps are not to scale. The accuracy of the maps is not guaranteed. Prospective buyers are encouraged to verify fence lines, deeded property lines and acreages using a licensed surveyor at their own expense.



Arkansas Land Company
2024 North Main Street
North Little Rock, AR 72114
(501) 604-4565
ArkansasLandForSale.com

