

12.8 +/- Acres Near Quitman, Arkansas
000 Old Springfield Rd.
Quitman, AR 72114

\$96,000
12.800± Acres
Faulkner County



12.8 +/- Acres Near Quitman, Arkansas
Quitman, AR / Faulkner County

SUMMARY

Address

000 Old Springfield Rd.

City, State Zip

Quitman, AR 72114

County

Faulkner County

Type

Hunting Land, Recreational Land, Lot

Latitude / Longitude

35.324672 / -92.180802

Taxes (Annually)

15

Acreage

12.800

Price

\$96,000

Property Website

<https://arkansaslandforsale.com/property/12-8-acres-near-quitman-arkansas-faulkner-arkansas/50863/>



MORE INFO ONLINE:

[ArkansasLandForSale.com](https://arkansaslandforsale.com)



12.8 +/- Acres Near Quitman, Arkansas
Quitman, AR / Faulkner County

PROPERTY DESCRIPTION

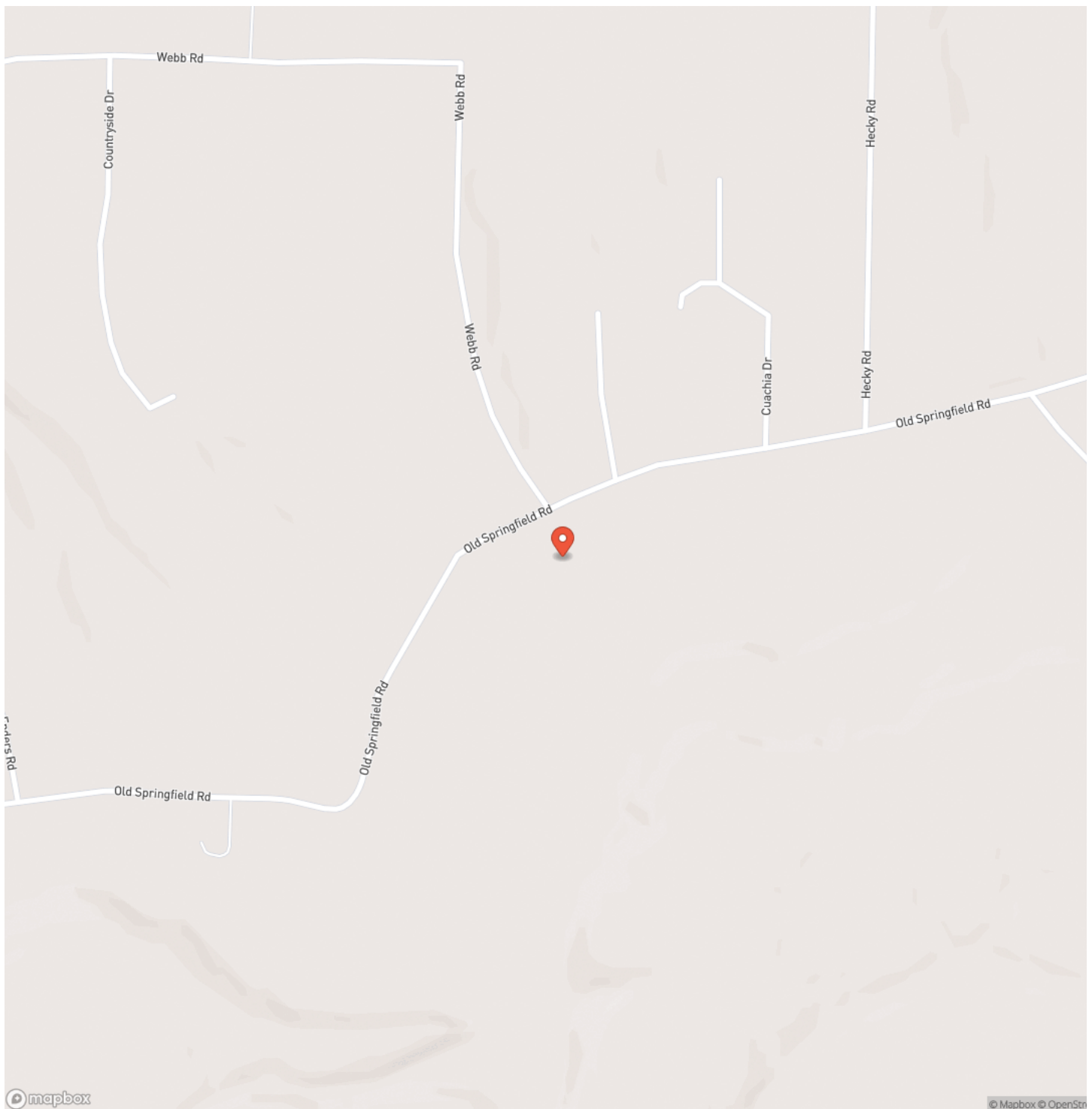
Excellent versatile property in a conveniently remote location. Quiet living not too far from modern conveniences. 10 minutes from Quitman, 30 minutes from Greers Ferry Lake or Heber Springs, and 30-35 minutes from Conway! Creek frontage on two borders, including Clear Creek to the south. Large River Birch and Oaks line the creeks and make for excellent shade and habitat. Property also includes a pond! Deer and small game are abundant. Municipal utilities available at the road frontage. Call today!



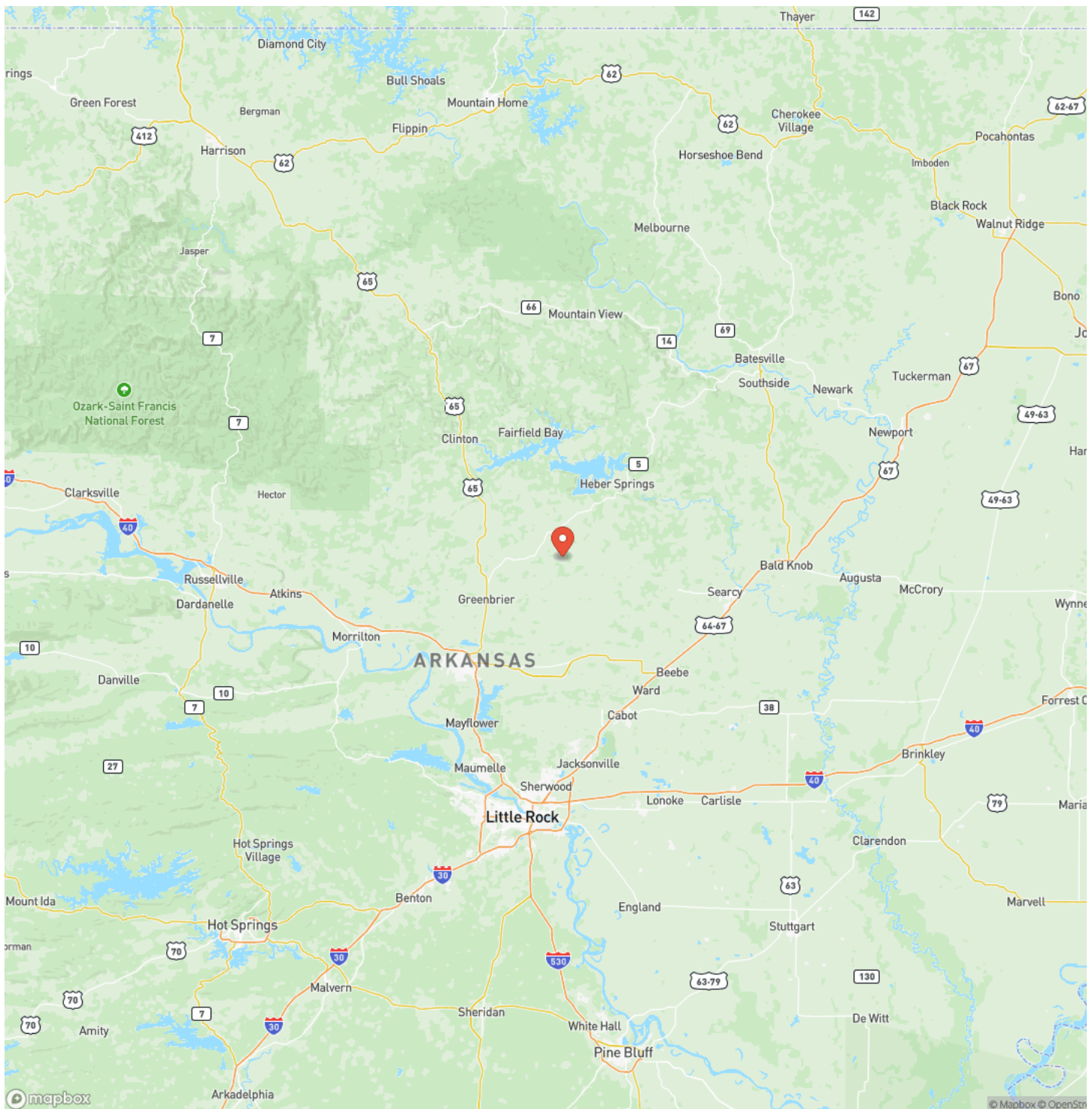
12.8 +/- Acres Near Quitman, Arkansas
Quitman, AR / Faulkner County



Locator Map



Locator Map

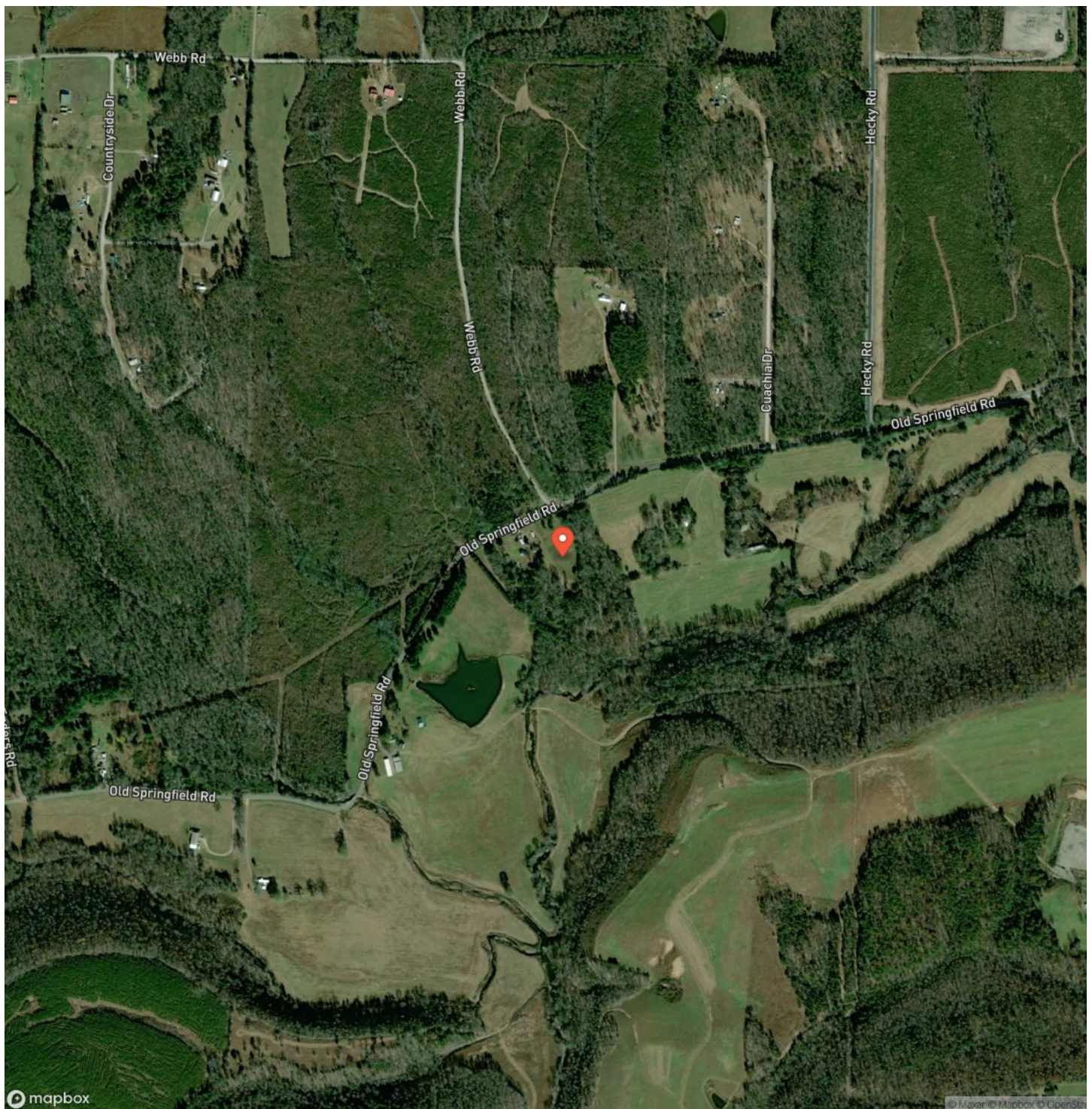


MORE INFO ONLINE:

ArkansasLandForSale.com



Satellite Map



12.8 +/- Acres Near Quitman, Arkansas
Quitman, AR / Faulkner County

LISTING REPRESENTATIVE

For more information contact:



Representative

Troy Weatherley

Mobile

(479) 957-5858

Email

troy@arkansas.land

Address

City / State / Zip

Enola, AR 72047

NOTES



This image shows a single sheet of white paper with horizontal ruling lines. The lines are evenly spaced and run across the width of the page. There are no margins, text, or other markings on the paper.



DISCLAIMERS

Information in this brochure is provided solely for information purposes and does not constitute an offer to sell or advertise real estate outside the states in which broker or agent licensed. The information presented has been obtained from sources deemed to be reliable, but is not guaranteed or warranted by the agent, broker, or the sellers of these properties. This offering is subject to errors, omissions, prior sale, price change, correction or withdrawal from the market without notice. All references to age, square footage, income, expenses, acreage, carrying capacity, and land classification, etc. are approximate. Prospective buyers are chargeable with and expected to conduct their own independent investigation of the information and the property and to rely only on those results. Sellers reserve the right to accept or reject any and all offers without liability to any buyer or cooperating broker.

Maps are provided for illustration purposes only, the accuracy is not warranted. Parcels on interactive maps are not adjusted to match aerial backgrounds. This information is for reference purposes only and is not a legal document. Data maps contain errors. The seller and seller's agent are making known to all potential buyers that there may be variations between the location of the existing fence lines and the legal description of the deeded property. Seller and seller's agent make no warranties with regard to the location of the fence lines in relationship to the deeded property lines, nor does the Seller make any warranties or representations with regard to the specific acreage contained within the fenced property lines. Seller is selling the property in an "as is" condition, which includes the location of the fences as they exist. Boundaries shown on the accompanying maps are approximate, based on county parcel data. The maps are not to scale. The accuracy of the maps is not guaranteed. Prospective buyers are encouraged to verify fence lines, deeded property lines and acreages using a licensed surveyor at their own expense.

MORE INFO ONLINE:

ArkansasLandForSale.com



Arkansas Land Company
2024 North Main Street
North Little Rock, AR 72114
(501) 604-4565
ArkansasLandForSale.com

