

83.17 +/- Acres in Greenbrier, AR
000 Brannon Rd.
Greenbrier, AR 72058

\$2,079,250
83.170± Acres
Faulkner County



83.17 +/- Acres in Greenbrier, AR
Greenbrier, AR / Faulkner County

SUMMARY

Address

000 Brannon Rd.

City, State Zip

Greenbrier, AR 72058

County

Faulkner County

Type

Undeveloped Land, Hunting Land, Recreational Land

Latitude / Longitude

35.186684 / -92.420284

Acreage

83.170

Price

\$2,079,250

Property Website

<https://arkansaslandforsale.com/property/83-17-acres-in-greenbrier-ar-faulkner-arkansas/81766/>



83.17 +/- Acres in Greenbrier, AR Greenbrier, AR / Faulkner County

PROPERTY DESCRIPTION

83.17 +/- Acres of Prime Vacant Land – Greenbrier School District

Discover the perfect blend of opportunity and natural beauty with this expansive tract of vacant land located in the highly sought-after Greenbrier School District. Whether you're looking to build your dream home, develop a private retreat, or invest in future growth, this versatile property offers endless possibilities.

Key Features:

- 83.17 +/- Acres of Rolling Terrain – A rare large parcel with a mix of open spaces, wooded areas, and gentle slopes, ideal for a variety of uses.
- Top-Rated School District – Zoned for the Greenbrier School District, one of the most respected educational systems in central Arkansas.
- Utilities Nearby – Power and water available at Brannon Road, simplifying the path to potential development.
- Prime Location – Just minutes from downtown Greenbrier and a short drive to Conway and Highway 65, offering easy access while maintaining privacy and seclusion.
- Abundant Wildlife & Natural Beauty – Enjoy the peace and quiet of the countryside with plenty of room for hiking, hunting, or simply relaxing in nature.

Whether you're a developer, investor, or someone looking for a private escape, this 80-acre gem is a rare find in a growing and desirable area. Don't miss your chance to own a piece of the Greenbrier countryside with exceptional potential.

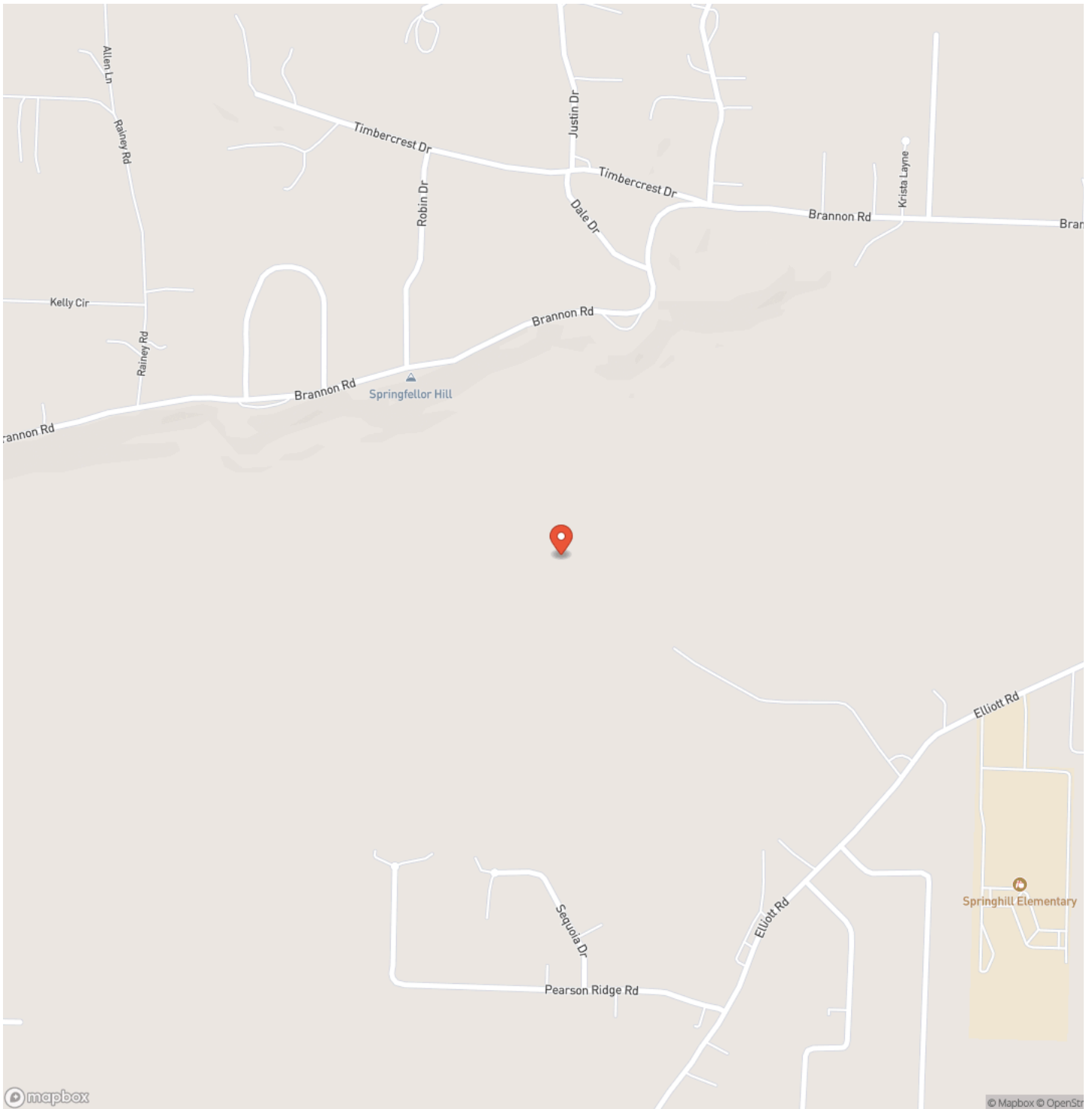
Agents See remarks.



83.17 +/- Acres in Greenbrier, AR
Greenbrier, AR / Faulkner County

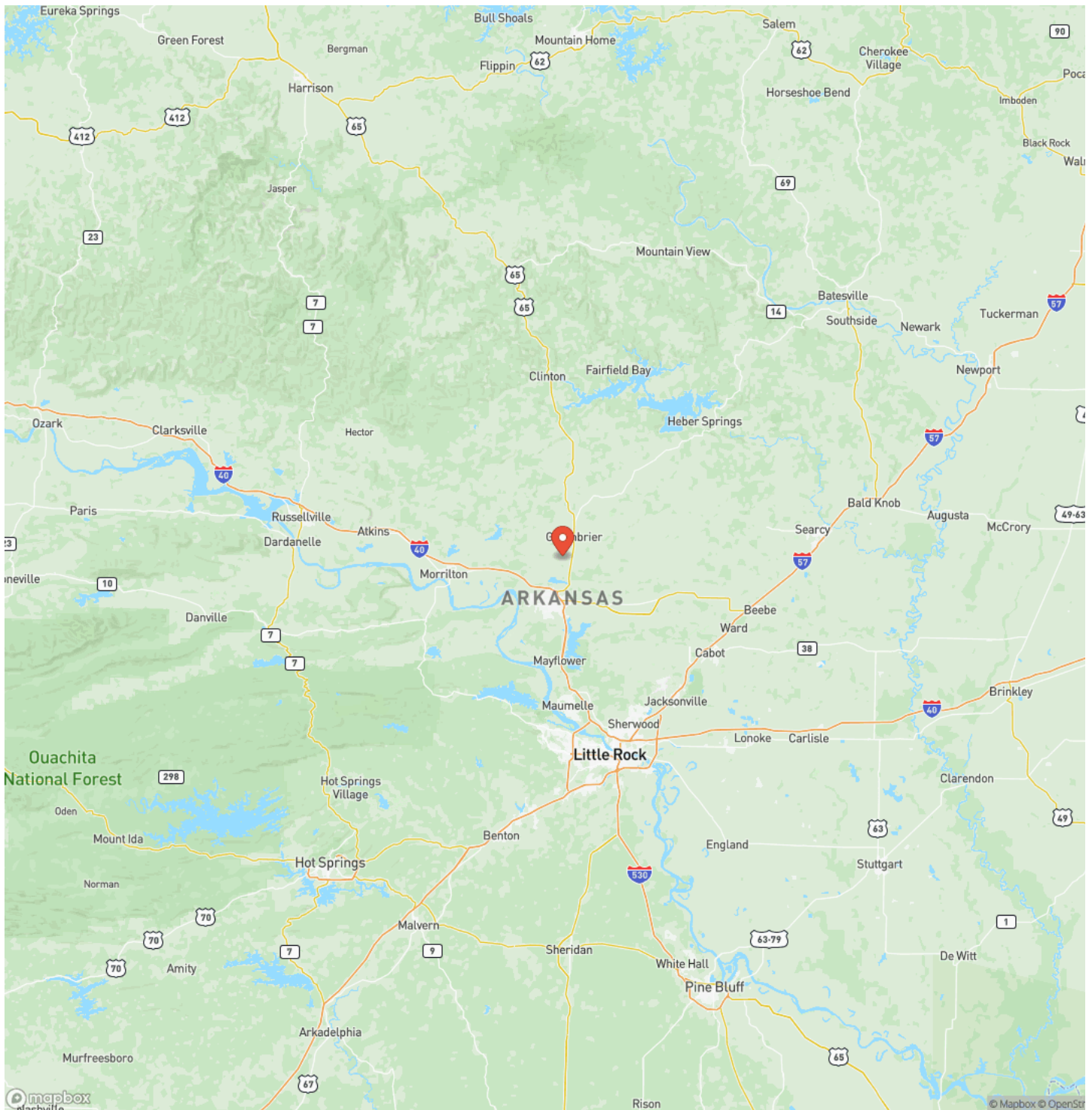


Locator Map



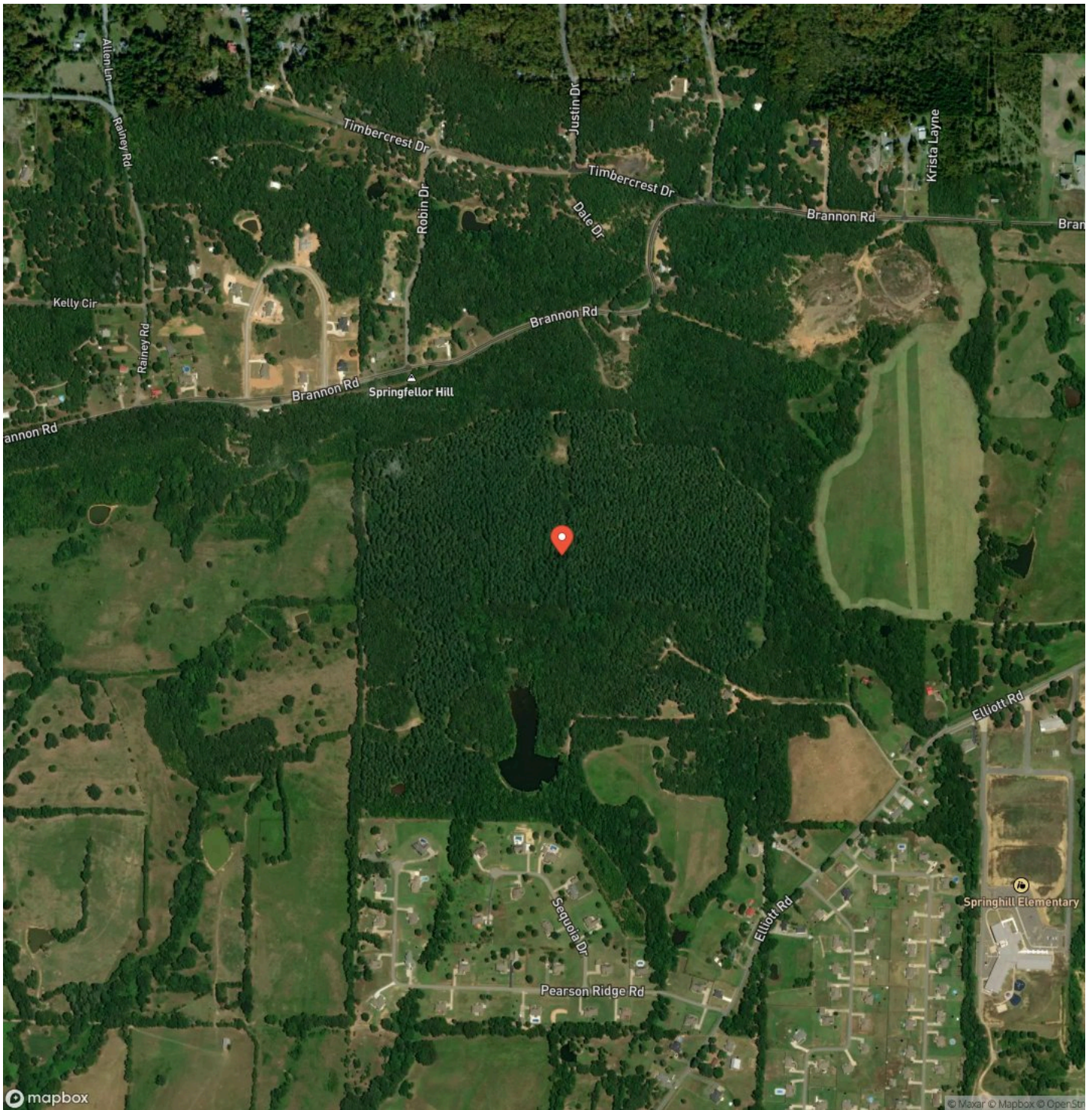
83.17 +/- Acres in Greenbrier, AR
Greenbrier, AR / Faulkner County

Locator Map



83.17 +/- Acres in Greenbrier, AR
Greenbrier, AR / Faulkner County

Satellite Map



83.17 +/- Acres in Greenbrier, AR
Greenbrier, AR / Faulkner County

LISTING REPRESENTATIVE

For more information contact:



Representative

Troy Weatherley

Mobile

(479) 957-5858

Email

troy@arkansas.land

Address

City / State / Zip

NOTES

[illegible]

MORE INFO ONLINE:

ArkansasLandForSale.com

[illegible]

MORE INFO ONLINE:
ArkansasLandForSale.com

DISCLAIMERS

Information in this brochure is provided solely for information purposes and does not constitute an offer to sell or advertise real estate outside the states in which broker or agent licensed. The information presented has been obtained from sources deemed to be reliable, but is not guaranteed or warranted by the agent, broker, or the sellers of these properties. This offering is subject to errors, omissions, prior sale, price change, correction or withdrawal from the market without notice. All references to age, square footage, income, expenses, acreage, carrying capacity, and land classification, etc. are approximate. Prospective buyers are chargeable with and expected to conduct their own independent investigation of the information and the property and to rely only on those results. Sellers reserve the right to accept or reject any and all offers without liability to any buyer or cooperating broker.

Maps are provided for illustration purposes only, the accuracy is not warranted. Parcels on interactive maps are not adjusted to match aerial backgrounds. This information is for reference purposes only and is not a legal document. Data maps contain errors. The seller and seller's agent are making known to all potential buyers that there may be variations between the location of the existing fence lines and the legal description of the deeded property. Seller and seller's agent make no warranties with regard to the location of the fence lines in relationship to the deeded property lines, nor does the Seller make any warranties or representations with regard to the specific acreage contained within the fenced property lines. Seller is selling the property in an "as is" condition, which includes the location of the fences as they exist. Boundaries shown on the accompanying maps are approximate, based on county parcel data. The maps are not to scale. The accuracy of the maps is not guaranteed. Prospective buyers are encouraged to verify fence lines, deeded property lines and acreages using a licensed surveyor at their own expense.



Arkansas Land Company
2024 North Main Street
North Little Rock, AR 72114
(501) 604-4565
ArkansasLandForSale.com

