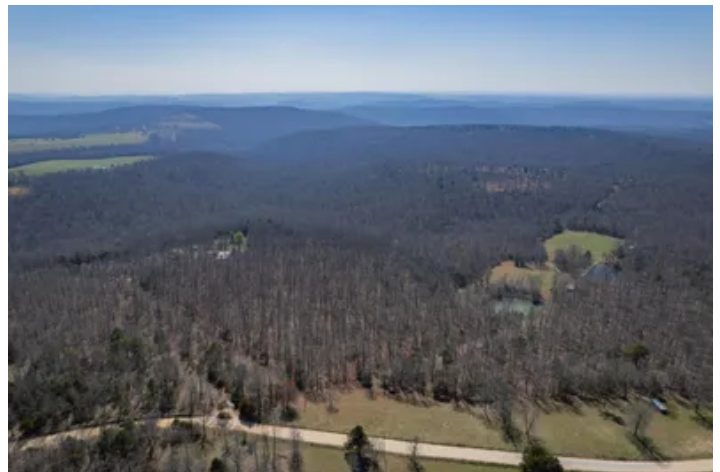


ESCAPE TO THE OZARK MOUNTAINS!!!
Sunnyland Rd
Mountain View, AR 72560

\$47,900
15.500± Acres
Stone County



MORE INFO ONLINE:

ArkansasLandForSale.com



ESCAPE TO THE OZARK MOUNTAINS!!!

Mountain View, AR / Stone County

SUMMARY

Address

Sunnyland Rd

City, State Zip

Mountain View, AR 72560

County

Stone County

Type

Hunting Land, Recreational Land, Undeveloped Land, Timberland

Latitude / Longitude

35.798344 / -92.191003

Acreage

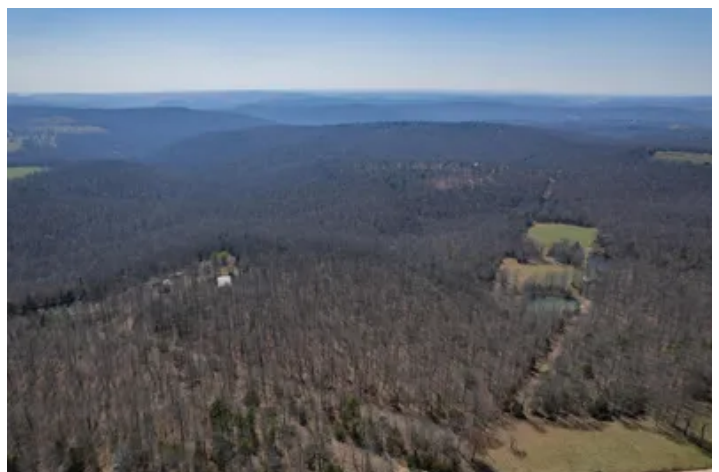
15.500

Price

\$47,900

Property Website

<https://arkansaslandforsale.com/property/escape-to-the-ozark-mountains-stone-arkansas/55318/>



MORE INFO ONLINE:

[ArkansasLandForSale.com](https://arkansaslandforsale.com)



ESCAPE TO THE OZARK MOUNTAINS!!!

Mountain View, AR / Stone County

PROPERTY DESCRIPTION

ESCAPE TO THE OZARK MOUNTAINS!!! 15.5 +/- acres of recreational, timberland, hunting land. This property offers many possibilities. It would be a great place for that get away cabin or your forever home. Only 10.2 miles to the square in Mountain View where you can enjoy the various shops the town has to offer. With a music rich tradition in the area you can enjoy musicians playing around the town square on Saturday nights. The season is from mid-April to late November. For the avid fisherman The White River which is world-renowned for trout fishing is also nearby. Fairfield Bay Marina which is on Greers Ferry Lake is only 23 miles away where you can enjoy fishing, boating, camping, and watersports. The property offers an abundance of wildlife for the avid hunter consisting of whitetail deer, turkey, bear, and numerous small game animals. Also nearby is the Sylamore National Forest offering hunting, hiking trails, atv trails, horse back trails, and camping. Come escape to the peace, tranquility, and beauty the Ozarks has to offer. To set up a private showing call Exclusive Listing Agent David Wallis [870-448-7280](tel:870-448-7280) DON'T MISS OUT!!!

MORE INFO ONLINE:

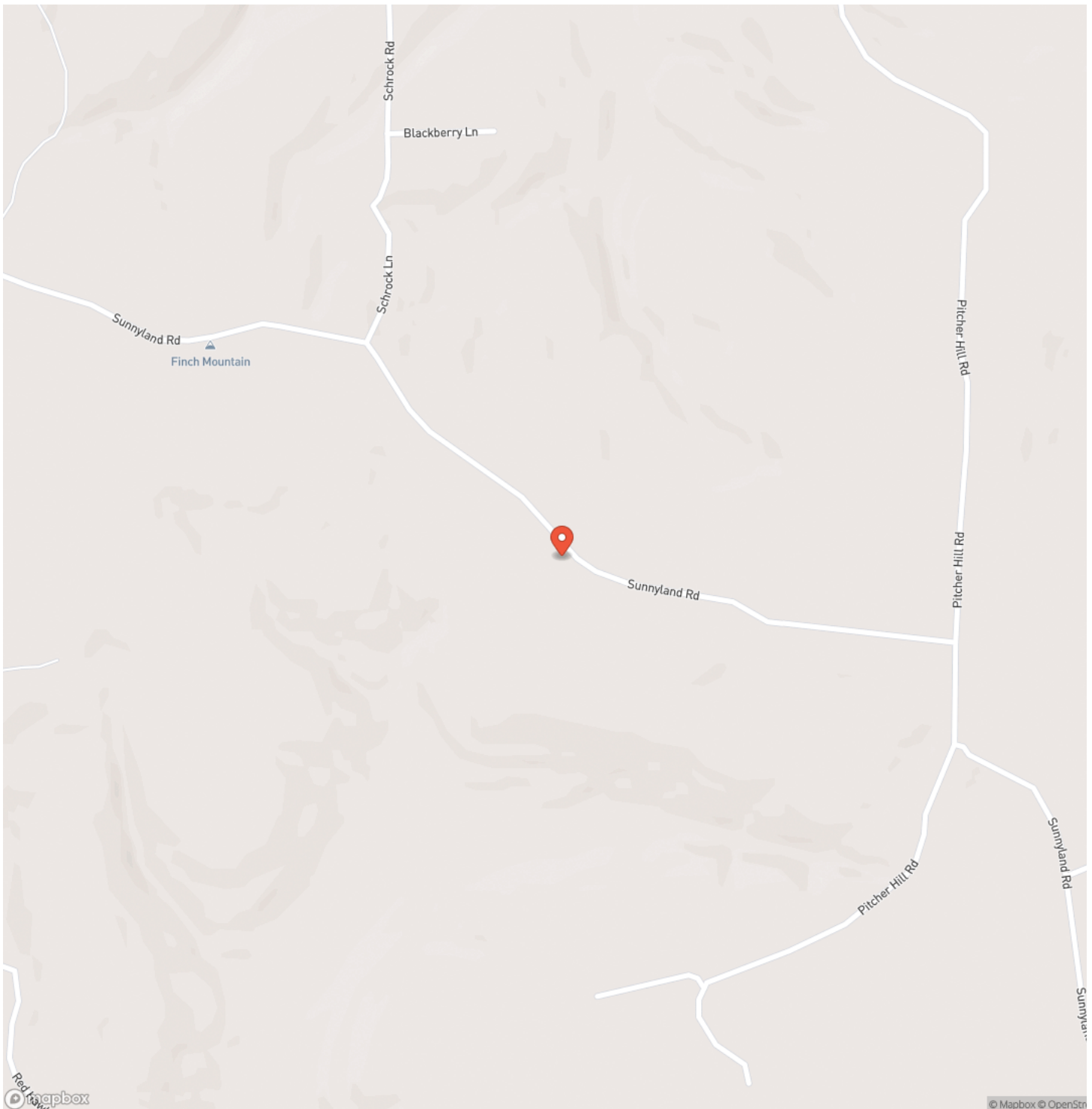
ArkansasLandForSale.com



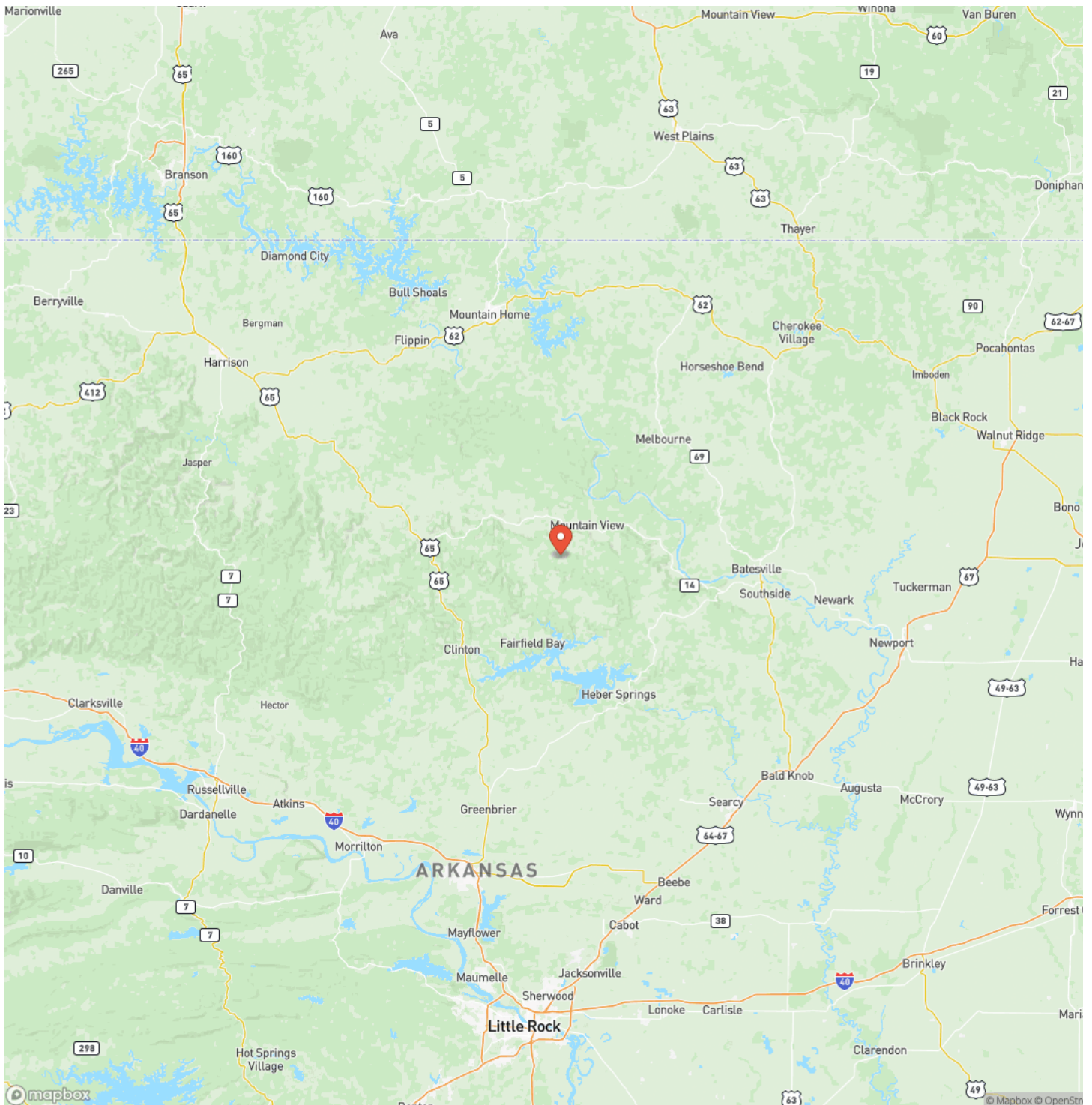
ESCAPE TO THE OZARK MOUNTAINS!!!
Mountain View, AR / Stone County



Locator Map



Locator Map



MORE INFO ONLINE:

ArkansasLandForSale.com



Satellite Map



Mountain View, AR / Stone County

For more information contact:



David Wallis

(870) 448-7280

(870) 448-7280

david@arkansas.land

City / State / Zip

Leslie, AR 72645

[illegible]

This image shows a single sheet of white paper with horizontal ruling lines. The lines are evenly spaced and run across the width of the page. There are no margins, text, or other markings on the paper.



MORE INFO ONLINE:
ArkansasLandForSale.com

DISCLAIMERS

Information in this brochure is provided solely for information purposes and does not constitute an offer to sell or advertise real estate outside the states in which broker or agent licensed. The information presented has been obtained from sources deemed to be reliable, but is not guaranteed or warranted by the agent, broker, or the sellers of these properties. This offering is subject to errors, omissions, prior sale, price change, correction or withdrawal from the market without notice. All references to age, square footage, income, expenses, acreage, carrying capacity, and land classification, etc. are approximate. Prospective buyers are chargeable with and expected to conduct their own independent investigation of the information and the property and to rely only on those results. Sellers reserve the right to accept or reject any and all offers without liability to any buyer or cooperating broker.

Maps are provided for illustration purposes only, the accuracy is not warranted. Parcels on interactive maps are not adjusted to match aerial backgrounds. This information is for reference purposes only and is not a legal document. Data maps contain errors. The seller and seller's agent are making known to all potential buyers that there may be variations between the location of the existing fence lines and the legal description of the deeded property. Seller and seller's agent make no warranties with regard to the location of the fence lines in relationship to the deeded property lines, nor does the Seller make any warranties or representations with regard to the specific acreage contained within the fenced property lines. Seller is selling the property in an "as is" condition, which includes the location of the fences as they exist. Boundaries shown on the accompanying maps are approximate, based on county parcel data. The maps are not to scale. The accuracy of the maps is not guaranteed. Prospective buyers are encouraged to verify fence lines, deeded property lines and acreages using a licensed surveyor at their own expense.



Arkansas Land Company
2024 North Main Street
North Little Rock, AR 72114
(501) 604-4565
ArkansasLandForSale.com

MORE INFO ONLINE:

ArkansasLandForSale.com

