

Howard Vacant lots
233 S Wabash
Howard, KS 67349

\$17,000
0.410± Acres
Elk County



Howard Vacant lots
Howard, KS / Elk County

SUMMARY

Address

233 S Wabash

City, State Zip

Howard, KS 67349

County

Elk County

Type

Undeveloped Land

Latitude / Longitude

37.467241 / -96.263164

Acreage

0.410

Price

\$17,000

Property Website

<https://l2realtyinc.com/property/howard-vacant-lots-elk-kansas/75264/>



Howard Vacant lots

Howard, KS / Elk County

PROPERTY DESCRIPTION

***Rare Development Opportunity: Prime Lots in Howard, Kansas

Unlock the potential of five expansive vacant lots in the heart of Howard, Kansas, located just one block south of downtown on Southern Main Street (Wabash). The lots span 125x143 feet, offering ample space for a variety of development options.

With utilities—water, gas, sewer, and electricity—already available, these properties are primed for single-family homes, duplexes, or even commercial projects. There are no zoning restrictions.

Take advantage of Elk County's neighborhood revitalization plan, which includes a five-year property tax refund for qualifying properties. For more information about this valuable incentive, please reach out to the Elk County appraiser's office.

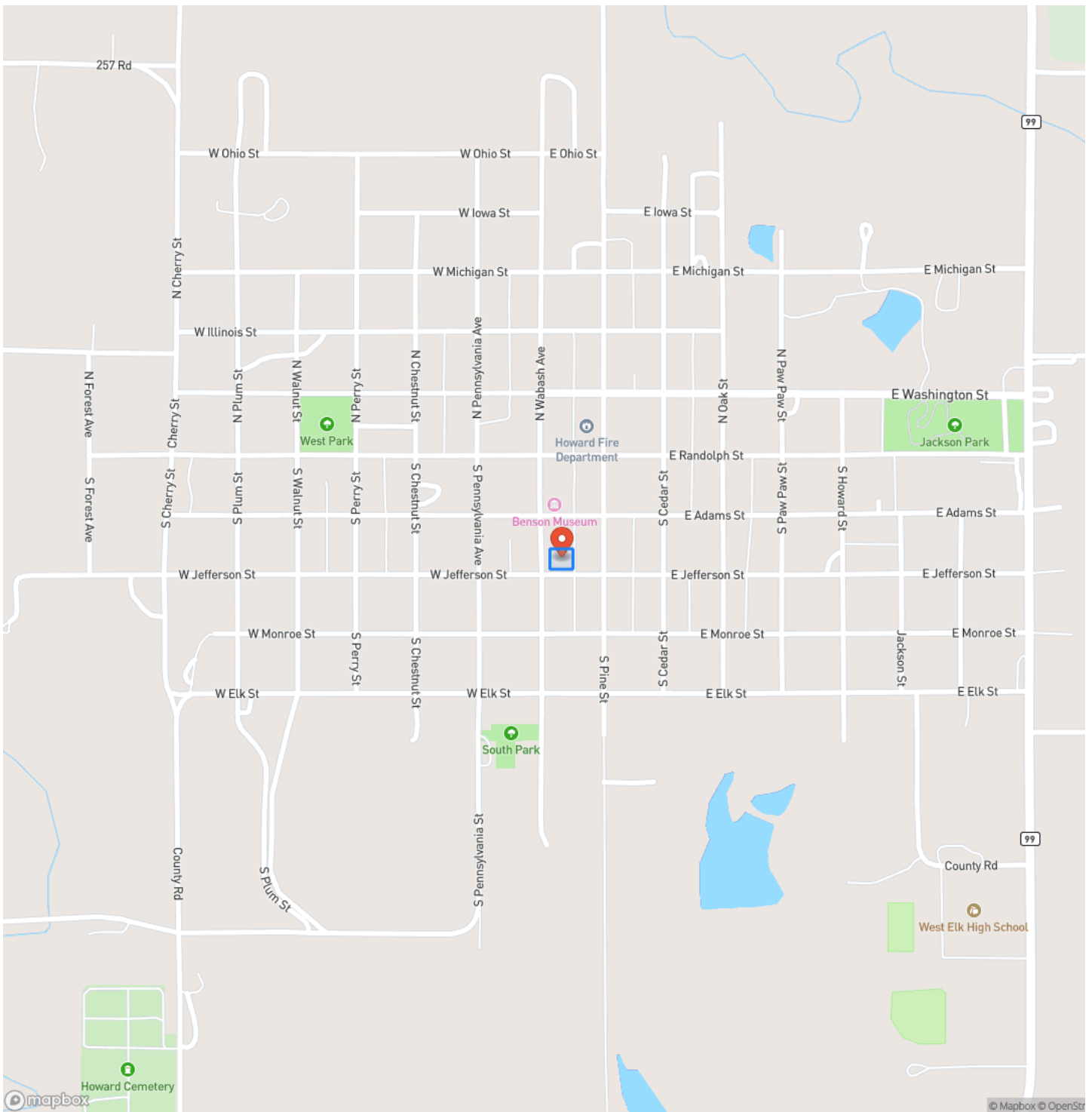
This is a rare opportunity - contact me at [620-330-2438](tel:620-330-2438) today for more information or to set up your showing!



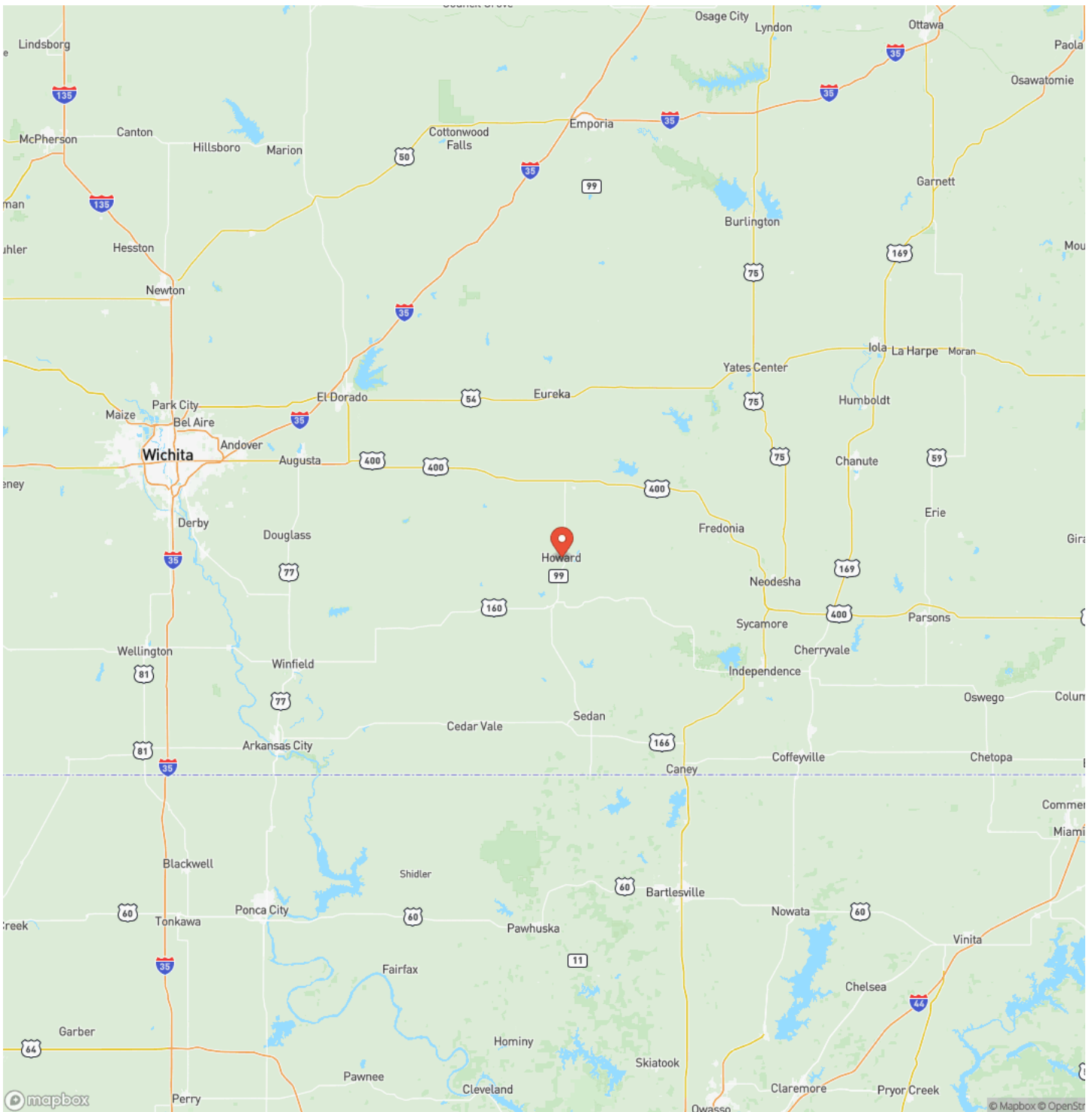
Howard Vacant lots
Howard, KS / Elk County



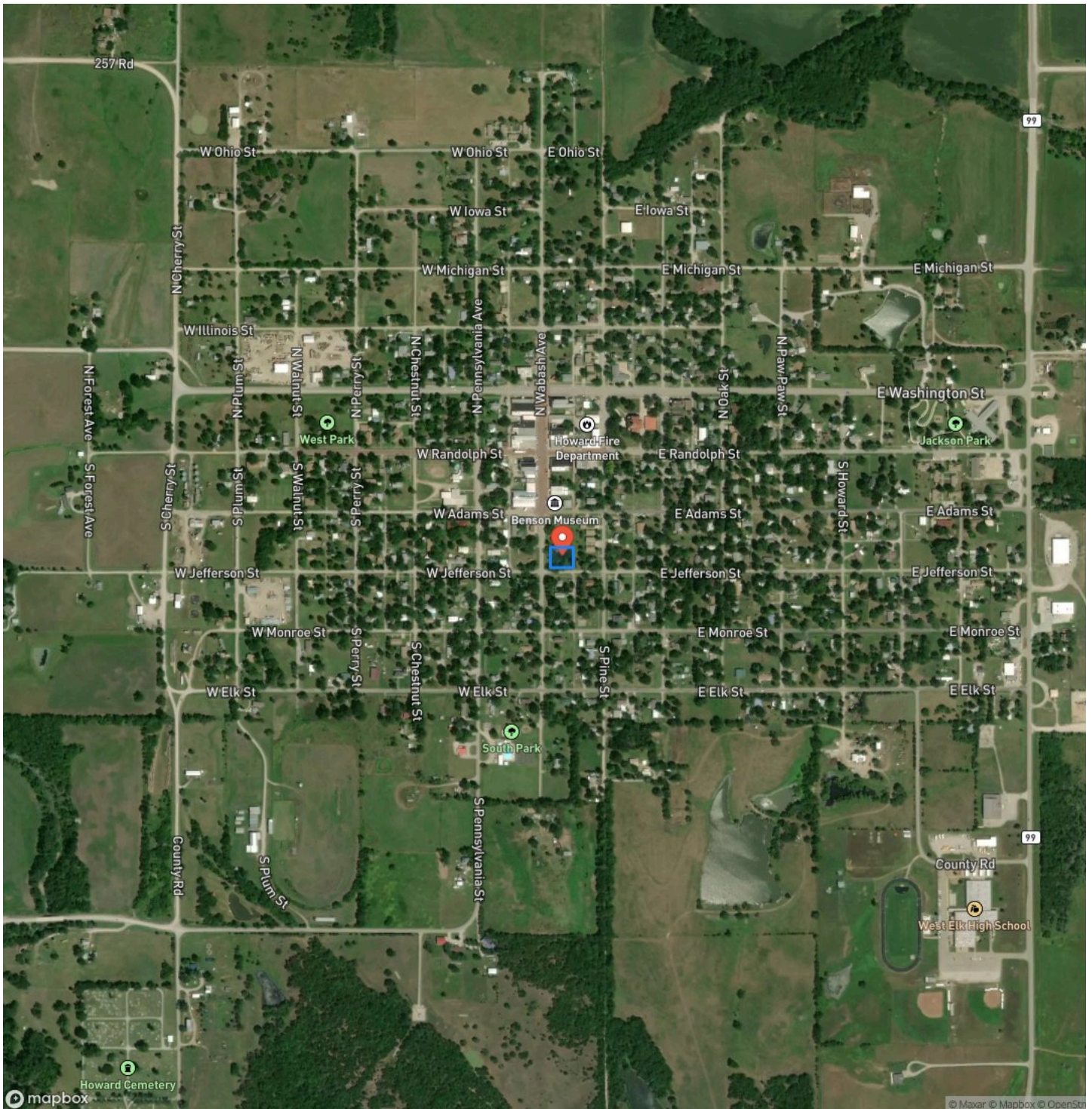
Locator Map



Locator Map



Satellite Map



Howard Vacant lots

Howard, KS / Elk County

LISTING REPRESENTATIVE

For more information contact:



Representative

Liz Hendricks

Mobile

(620) 330-2438

Email

EHendricks@L2realtyinc.com

Address

City / State / Zip

Howard, KS 67301

NOTES

[illegible]

This image shows a single sheet of white paper with horizontal ruling lines. The lines are evenly spaced and run across the width of the page. There are no margins, text, or other markings on the paper.



L2realtyinc.com

DISCLAIMERS

Information in this brochure is provided solely for information purposes and does not constitute an offer to sell or advertise real estate outside the states in which broker or agent licensed. The information presented has been obtained from sources deemed to be reliable, but is not guaranteed or warranted by the agent, broker, or the sellers of these properties. This offering is subject to errors, omissions, prior sale, price change, correction or withdrawal from the market without notice. All references to age, square footage, income, expenses, acreage, carrying capacity, and land classification, etc. are approximate. Prospective buyers are chargeable with and expected to conduct their own independent investigation of the information and the property and to rely only on those results. Sellers reserve the right to accept or reject any and all offers without liability to any buyer or cooperating broker.

Maps are provided for illustration purposes only, the accuracy is not warranted. Parcels on interactive maps are not adjusted to match aerial backgrounds. This information is for reference purposes only and is not a legal document. Data maps contain errors. The seller and seller's agent are making known to all potential buyers that there may be variations between the location of the existing fence lines and the legal description of the deeded property. Seller and seller's agent make no warranties with regard to the location of the fence lines in relationship to the deeded property lines, nor does the Seller make any warranties or representations with regard to the specific acreage contained within the fenced property lines. Seller is selling the property in an "as is" condition, which includes the location of the fences as they exist. Boundaries shown on the accompanying maps are approximate, based on county parcel data. The maps are not to scale. The accuracy of the maps is not guaranteed. Prospective buyers are encouraged to verify fence lines, deeded property lines and acreages using a licensed surveyor at their own expense.



L2 Realty, Inc - Land and Lifestyle Properties
4045B CR 3900
Independence, KS 67301
(620) 577-4487
L2realtyinc.com

