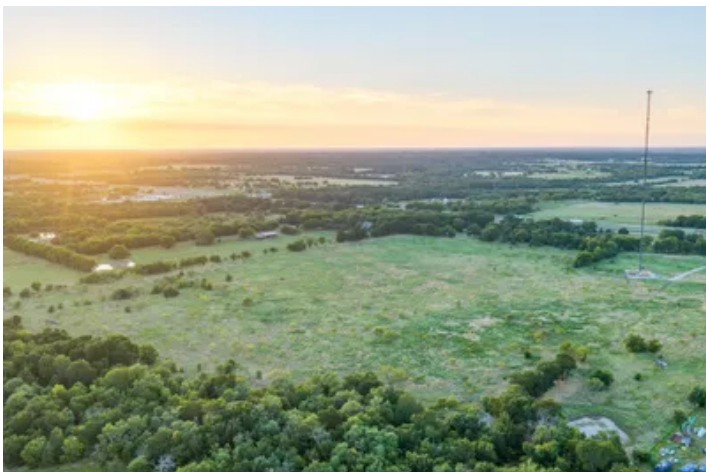


I-30 Frontage Farm
5715 E I-30
Campbell, TX 75422

\$2,079,700
59.420± Acres
Hunt County



I-30 Frontage Farm
Campbell, TX / Hunt County

SUMMARY

Address

5715 E I-30

City, State Zip

Campbell, TX 75422

County

Hunt County

Type

Farms, Hunting Land, Ranches, Recreational Land, Undeveloped Land

Latitude / Longitude

33.1311 / -95.9272

Acreage

59.420

Price

\$2,079,700

Property Website

<https://arrowheadlandcompany.com/property/i-30-frontage-farm-hunt-texas/111795/>



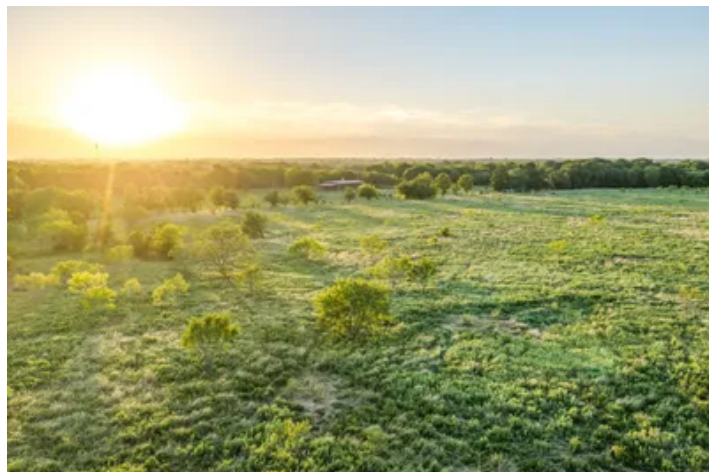
I-30 Frontage Farm Campbell, TX / Hunt County

PROPERTY DESCRIPTION

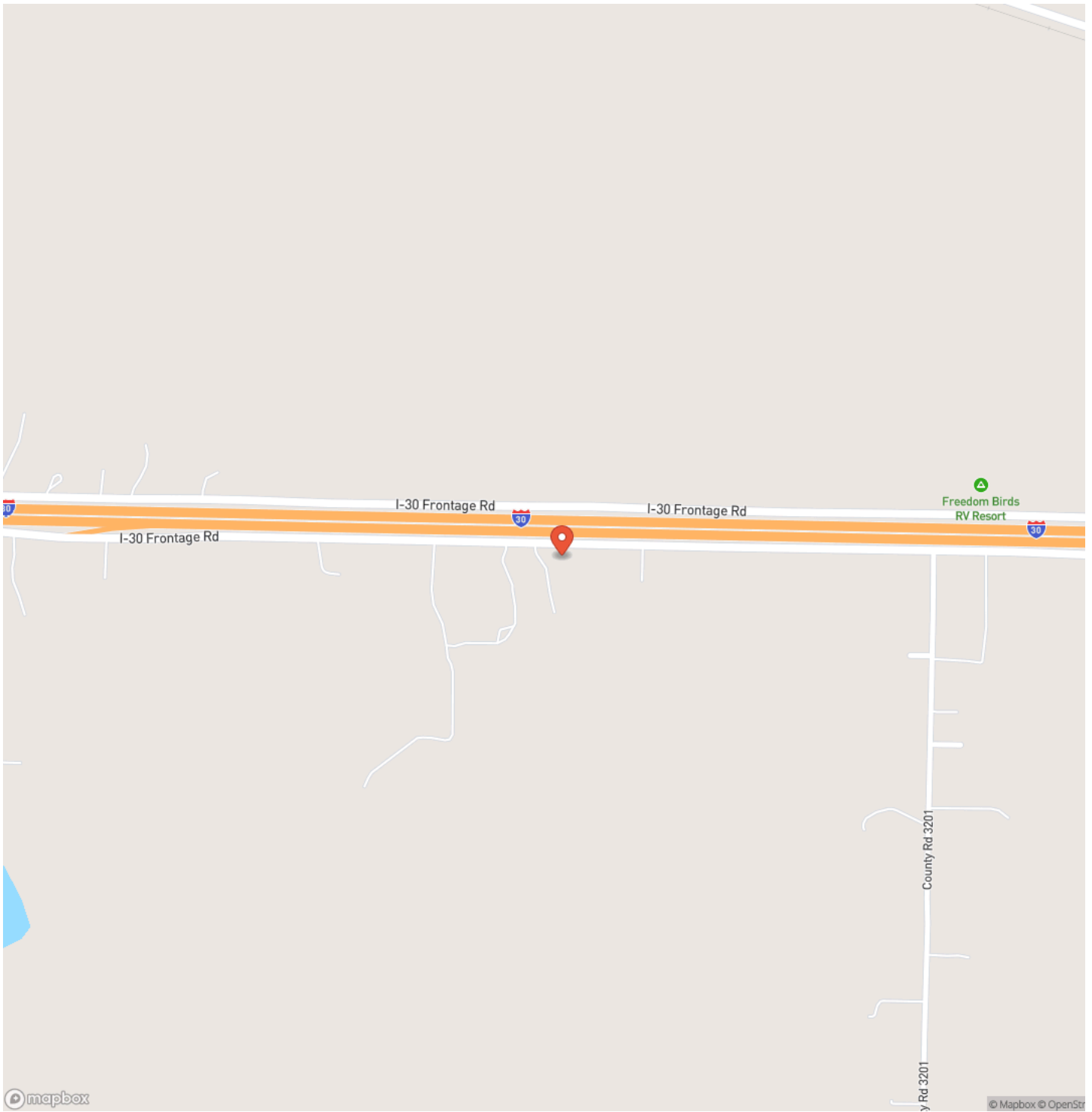
Introducing the I-30 Frontage Farm, a truly great Central Texas investment and homesite property! This 59.42± acre tract in eastern Hunt County offers an outstanding combination of productive pasture and future potential! With approximately 0.15 miles of I-30 road frontage, the property offers excellent year-round access, making it easy to move equipment in and out. The property features gently rolling, mostly open pasture with scattered hardwoods that provide natural shade while making the land well suited for livestock, hay production, a future homesite, or investment. It also includes a seasonal creek and pond providing water for livestock and wildlife. Whitetail deer and small game call the land home, providing the opportunity for hunting and enjoying the outdoors. The farm is currently ag exempt, helping keep ownership costs low. Electricity is already on the property and a water line runs along the road frontage, making future improvements convenient. The farm is located just 8± miles from Commerce, 10± miles from Greenville, 20± miles from Sulphur Springs, and approximately 55± miles from Dallas. Whether you're looking for a place to build, expand your agricultural operation, or invest in a growing area along the I-30 corridor, this property offers the versatility and location to make it a great opportunity! All showings are by appointment only. For more information or to schedule a private showing, please contact Joe Marzahl at [\(469\) 596-9016](tel:4695969016).

Disclaimer: The boundary lines shown are approximate and are provided for general reference only. Arrowhead Land Company makes no representations or warranties, express or implied, as to the accuracy, completeness, or reliability of those property lines. Buyers are advised to obtain an independent survey to verify exact property boundaries.

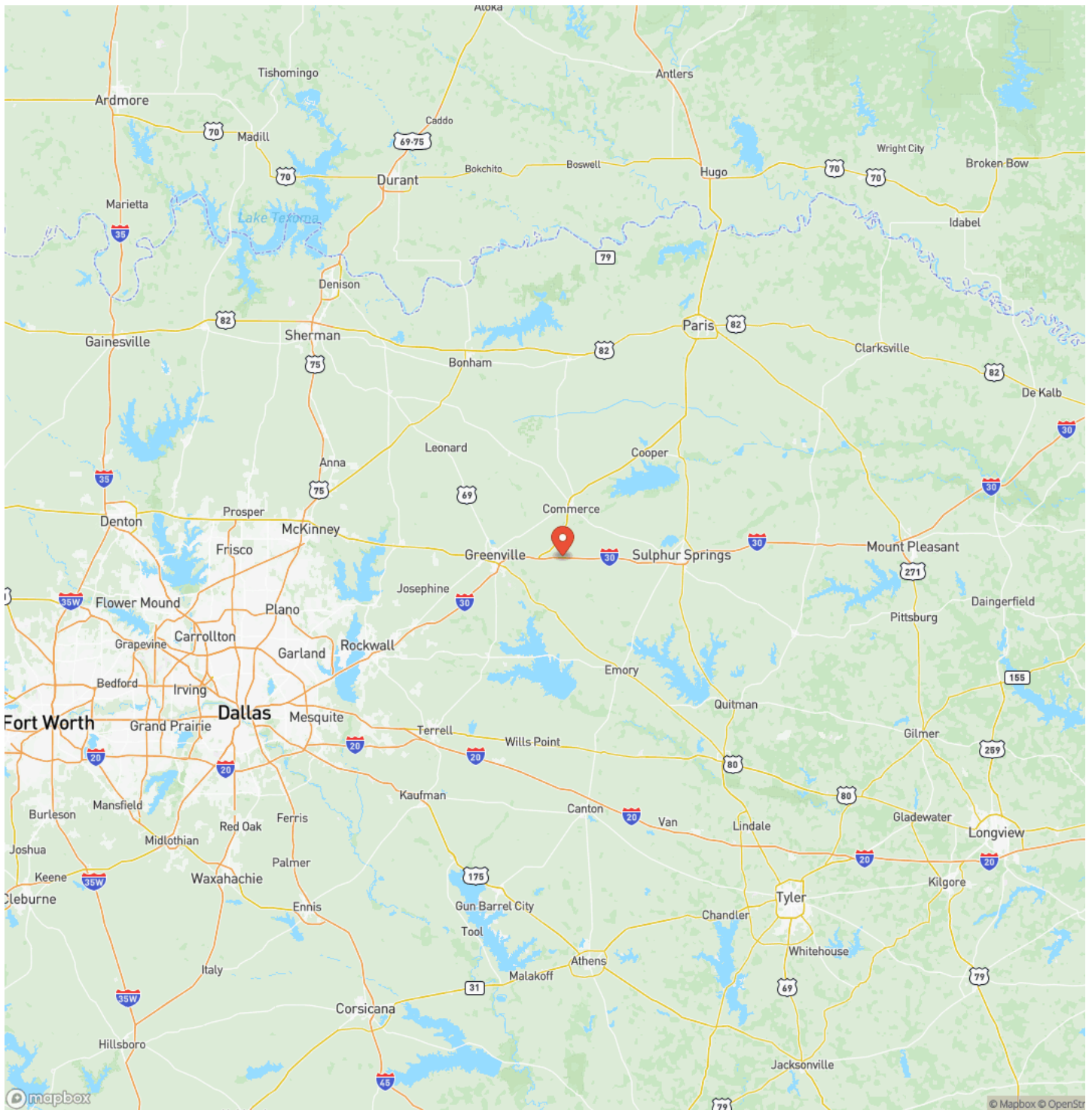
**I-30 Frontage Farm
Campbell, TX / Hunt County**



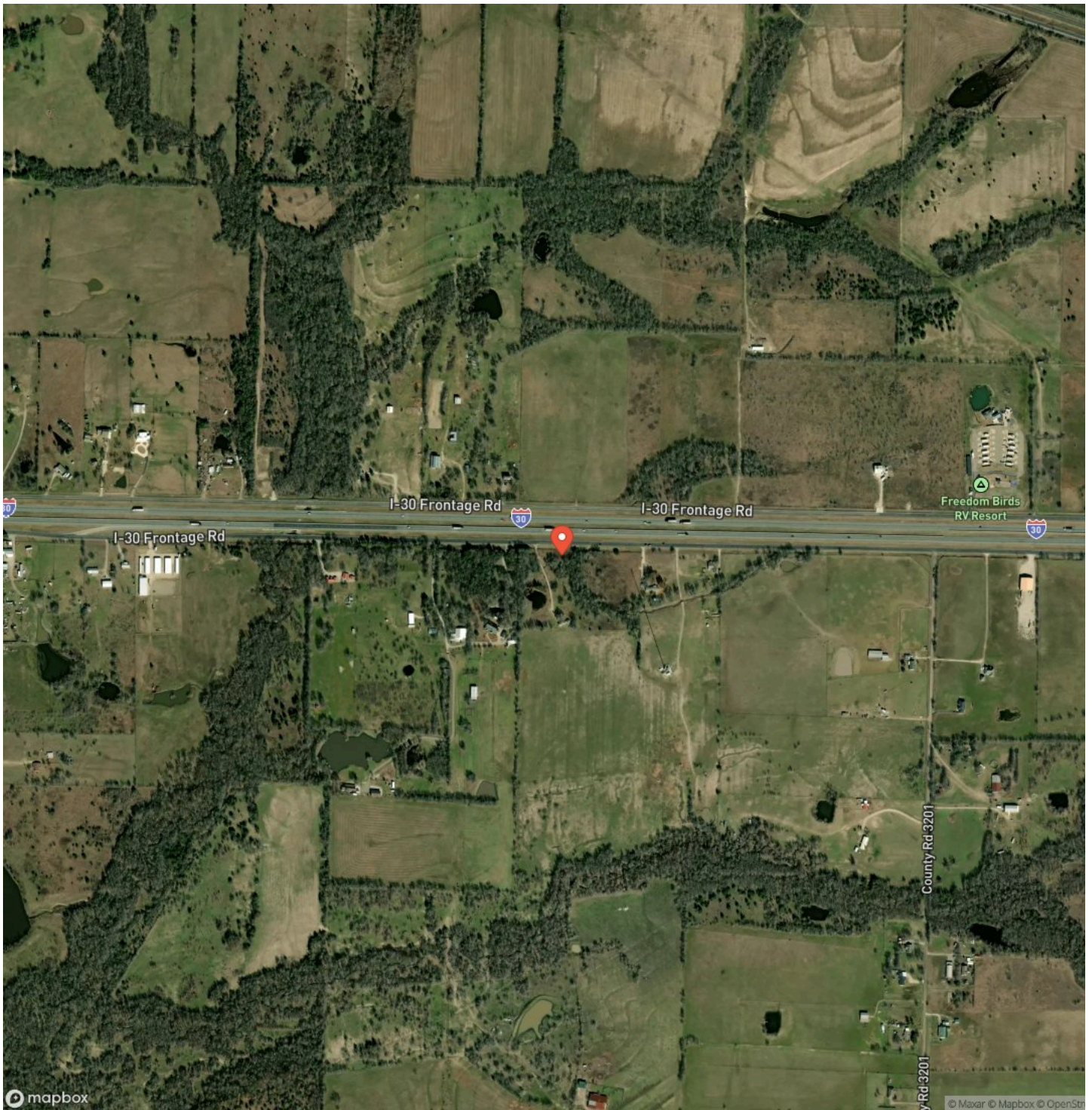
Locator Map



Locator Map



Satellite Map



DISCLAIMERS

Information in this brochure is provided solely for information purposes and does not constitute an offer to sell or advertise real estate outside the states in which broker or agent licensed. The information presented has been obtained from sources deemed to be reliable, but is not guaranteed or warranted by the agent, broker, or the sellers of these properties. This offering is subject to errors, omissions, prior sale, price change, correction or withdrawal from the market without notice. All references to age, square footage, income, expenses, acreage, carrying capacity, and land classification, etc. are approximate. Prospective buyers are chargeable with and expected to conduct their own independent investigation of the information and the property and to rely only on those results. Sellers reserve the right to accept or reject any and all offers without liability to any buyer or cooperating broker.

Maps are provided for illustration purposes only, the accuracy is not warranted. Parcels on interactive maps are not adjusted to match aerial backgrounds. This information is for reference purposes only and is not a legal document. Data maps contain errors. The seller and seller's agent are making known to all potential buyers that there may be variations between the location of the existing fence lines and the legal description of the deeded property. Seller and seller's agent make no warranties with regard to the location of the fence lines in relationship to the deeded property lines, nor does the Seller make any warranties or representations with regard to the specific acreage contained within the fenced property lines. Seller is selling the property in an "as is" condition, which includes the location of the fences as they exist. Boundaries shown on the accompanying maps are approximate, based on county parcel data. The maps are not to scale. The accuracy of the maps is not guaranteed. Prospective buyers are encouraged to verify fence lines, deeded property lines and acreages using a licensed surveyor at their own expense.

Arrowhead Land Company
205 E Dewey Ave
Sapulpa, OK 74066
(833) 873-2452
<https://arrowheadlandcompany.com/>

