

**153 +/- Acres of Tillable and Great Hunting in Rice  
County, Kansas.**  
Ave S / 9th Rd  
Alden, KS 67512

**\$451,350**  
153± Acres  
Rice County



**153 +/- Acres of Tillable and Great Hunting in Rice County, Kansas.**  
**Alden, KS / Rice County**

---

**SUMMARY**

**Address**

Ave S / 9th Rd

**City, State Zip**

Alden, KS 67512

**County**

Rice County

**Type**

Farms, Hunting Land, Recreational Land

**Latitude / Longitude**

38.25696 / -98.330684

**Taxes (Annually)**

1195

**Acreage**

153

**Price**

\$451,350

**Property Website**

<https://redcedarland.com/detail/153-acres-of-tillable-and-great-hunting-in-rice-county-kansas-rice-kansas/70336/>





## 153 +/- Acres of Tillable and Great Hunting in Rice County, Kansas. Alden, KS / Rice County

---

### **PROPERTY DESCRIPTION**

#### **153 +/- Acres of Tillable and Great Hunting in Rice County, Kansas.**

**Driving Directions:** From the town of Alden Ks, travel west on avenue T 3/4 of a mile. Turn north on 9th Road half a mile. Property starts on west side of the road and run north half a mile.

**Legals:** S5-T21S-R9W

**Taxes:** \$1,195

**Property Description:** This farm is a great mix farm that consists of tillable income and hunting opportunities. The farm consists of 135+/- acres in tillable with the remainder of the farm in tree rows and tree cover. The farmland is on a share crop year to year basis. Located in deer unit 5, the tree cover and tree rows allow for great travel corridors during the whitetail rut. There is also great opportunity for early deer season hunting when planted to soybeans and milo. It has Canadian fine sandy loam soils and has produced good yields in past years. This tract has great deer hunting opportunities with quail and turkey as a bonus.

**To schedule a showing contact agent Konnor Hickel at [620-992-7075](tel:620-992-7075)**

#### **Key Features:**

Great Hunting

Alden / Sterling / Lyons

Flat Tillable Dryland

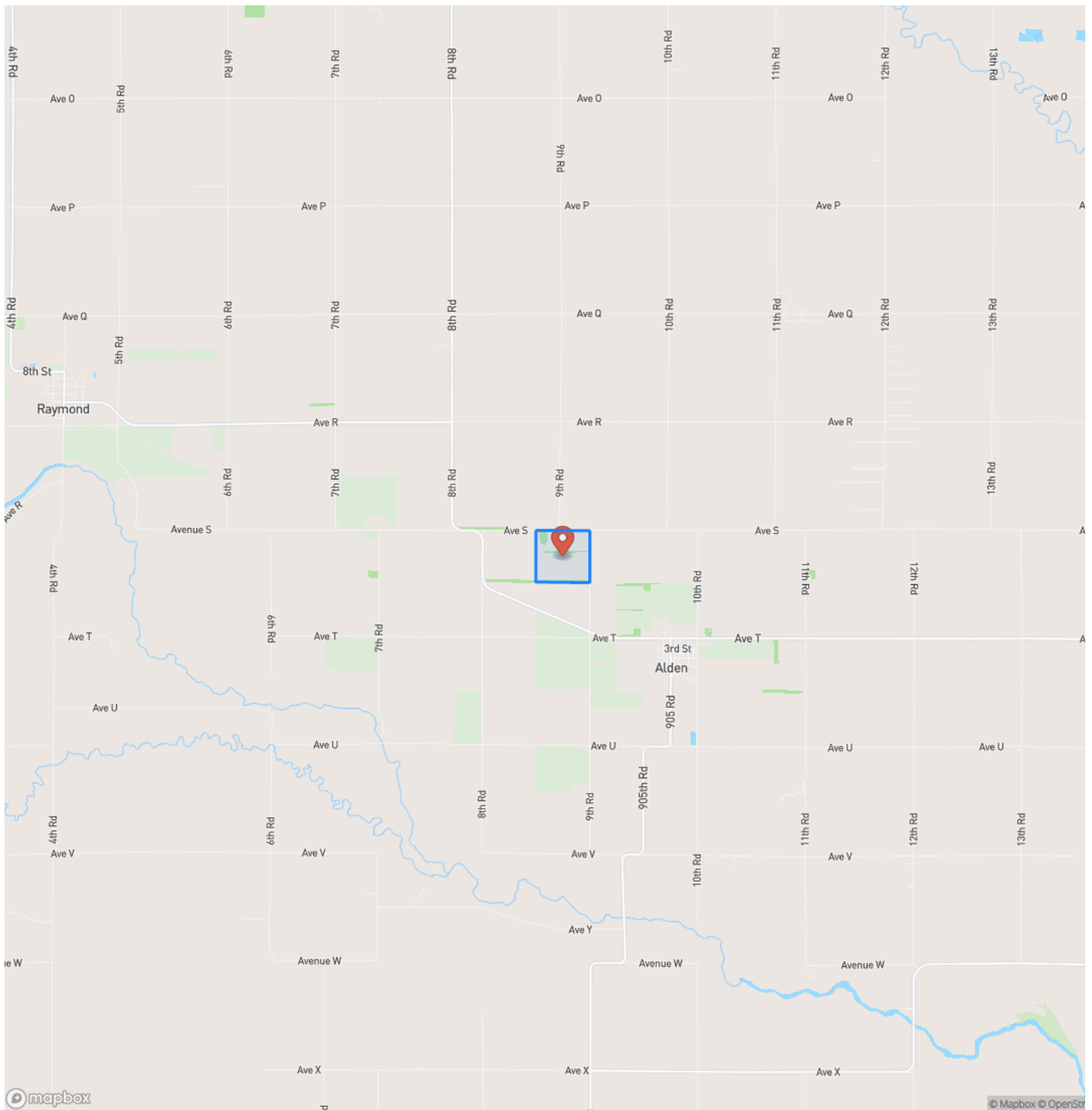
Crop Share

Hunting Lease

Close to Blacktop

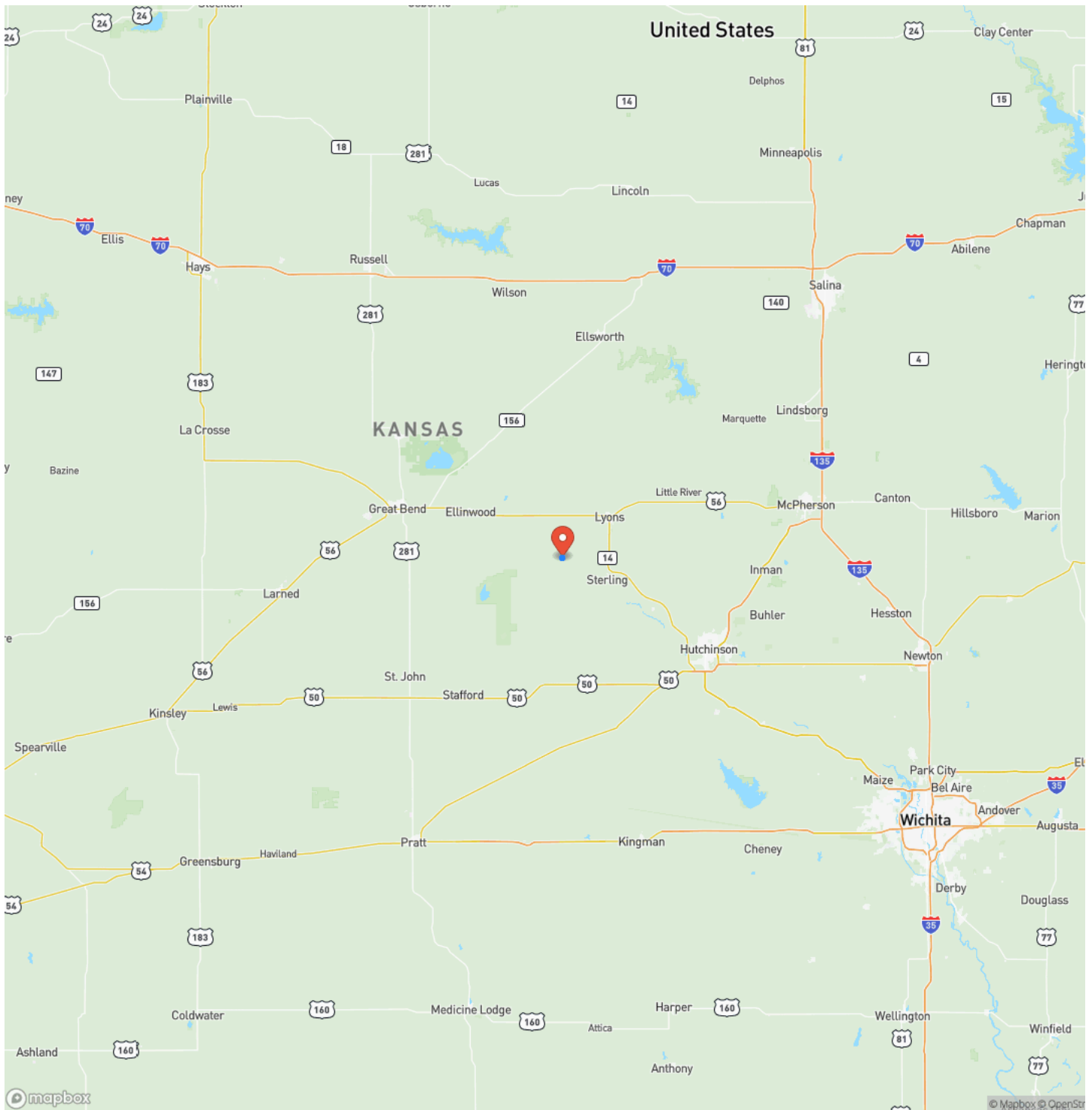


## Locator Map



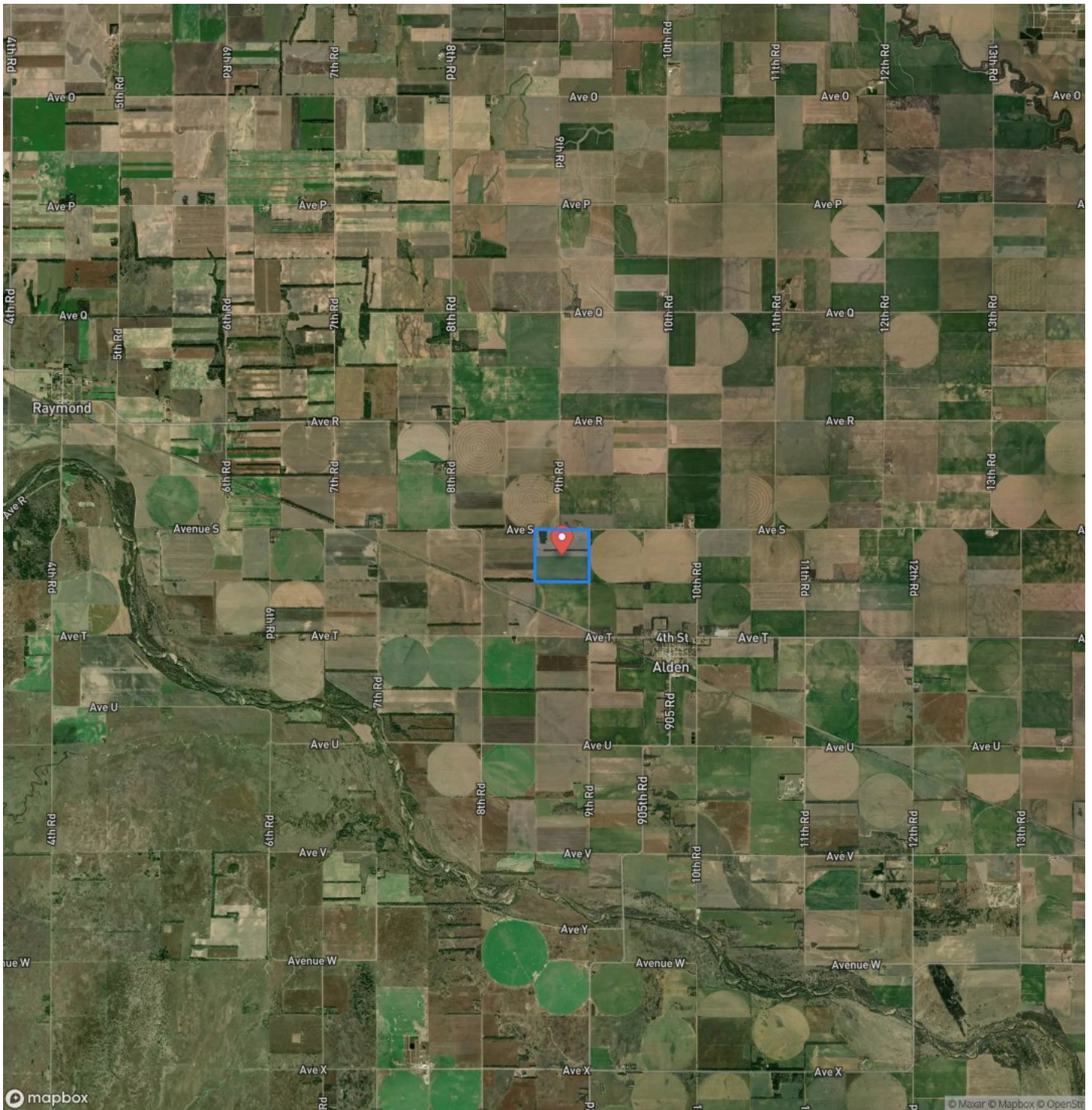
153 +/- Acres of Tillable and Great Hunting in Rice County, Kansas.  
Alden, KS / Rice County

## Locator Map



153 +/- Acres of Tillable and Great Hunting in Rice County, Kansas.  
Alden, KS / Rice County

## Satellite Map





153 +/- Acres of Tillable and Great Hunting in Rice County, Kansas.  
Alden, KS / Rice County

LISTING REPRESENTATIVE  
For more information contact:



**Representative**  
Konnor Hickel  
**Mobile**  
(620) 992-7075  
**Email**  
konnor@redcedarland.com  
**Address**  
**City / State / Zip**  
Geneseo, KS 67444

NOTES

Notes section with multiple horizontal lines for text entry.



## This image shows a single sheet of white paper with horizontal ruling lines. The lines are evenly spaced and run across the width of the page. There are no margins, text, or other markings on the paper.



**redcedarland.com**



## **DISCLAIMERS**

Information in this brochure is provided solely for information purposes and does not constitute an offer to sell or advertise real estate outside the states in which broker or agent licensed. The information presented has been obtained from sources deemed to be reliable, but is not guaranteed or warranted by the agent, broker, or the sellers of these properties. This offering is subject to errors, omissions, prior sale, price change, correction or withdrawal from the market without notice. All references to age, square footage, income, expenses, acreage, carrying capacity, and land classification, etc. are approximate. Prospective buyers are chargeable with and expected to conduct their own independent investigation of the information and the property and to rely only on those results. Sellers reserve the right to accept or reject any and all offers without liability to any buyer or cooperating broker.

Maps are provided for illustration purposes only, the accuracy is not warranted. Parcels on interactive maps are not adjusted to match aerial backgrounds. This information is for reference purposes only and is not a legal document. Data maps contain errors. The seller and seller's agent are making known to all potential buyers that there may be variations between the location of the existing fence lines and the legal description of the deeded property. Seller and seller's agent make no warranties with regard to the location of the fence lines in relationship to the deeded property lines, nor does the Seller make any warranties or representations with regard to the specific acreage contained within the fenced property lines. Seller is selling the property in an "as is" condition, which includes the location of the fences as they exist. Boundaries shown on the accompanying maps are approximate, based on county parcel data. The maps are not to scale. The accuracy of the maps is not guaranteed. Prospective buyers are encouraged to verify fence lines, deeded property lines and acreages using a licensed surveyor at their own expense.



---

**Red Cedar Land Co.**  
2 NE 10th ave  
Saint John, KS 67576  
(620) 546-3746  
[redcedarland.com](http://redcedarland.com)

---

