

Appalachian Overlook: 98+/- Unrestricted Acres
Bordering Jefferson National Forest in Wythe County,
VA
Dry Gulch Rd
Wytheville, VA 24382

\$289,000
98± Acres
Wythe County



Appalachian Overlook: 98+/- Unrestricted Acres Bordering Jefferson National Forest in Wythe County, VA Wytheville, VA / Wythe County

SUMMARY

Address

Dry Gulch Rd

City, State Zip

Wytheville, VA 24382

County

Wythe County

Type

Hunting Land, Recreational Land, Undeveloped Land

Latitude / Longitude

37.003908 / -81.204072

Acreage

98

Price

\$289,000

Property Website

<https://www.mossyoakproperties.com/property/appalachian-overlook-98-unrestricted-acres-bordering-jefferson-national-forest-in-wythe-county-va-wythe-virginia/90051/>



Appalachian Overlook: 98+/- Unrestricted Acres Bordering Jefferson National Forest in Wythe County, VA Wytheville, VA / Wythe County

PROPERTY DESCRIPTION

Nestled toward the end of Dry Gulch Road in Wytheville, Virginia, this 98+/- acre tract of raw, unrestricted land offers an unrivaled opportunity for those seeking true seclusion and outdoor adventure. Surrounded by the breathtaking beauty of Wythe County, the property borders the expansive Jefferson National Forest – more than 200,000 acres of protected wilderness in Southwest Virginia – providing direct access to endless hiking, hunting, and recreational opportunities right from your backyard. With elevations up to 3,600 feet, the land features rolling wooded terrain with white pine, oak, hemlock, cherry, rhododendron, and mountain laurel, creating a diverse and vibrant mountain landscape. Seasonal long-range views to the east can be enjoyed from multiple vantage points, with the potential for year-round panoramas through selective clearing.

An established ATV/UTV trail system winds through the heart of the property, making it easy to explore the ridges and hollows that define this tract. A couple of treestands are already in place, and the heavy deer activity throughout makes it ideal for serious hunters or those looking to enjoy the abundant wildlife. Near the entrance, a flat area provides an excellent base camp location or could be transformed into a food plot to further enhance the habitat. Higher up, several potential building sites offer the perfect setting for a rustic cabin or off-grid retreat, where you could capture incredible views while maintaining complete privacy.

Whether you envision building a log cabin “down in the holler” as a base camp, or clearing a ridgetop for a panoramic pavilion overlooking thousands of untouched acres, this property offers the space and freedom to create your dream escape. Imagine hosting friends and family for mountain-to-table dinners, evenings around the campfire under an endless canopy of stars, and weekends filled with hunting, hiking, and riding trails deep into the mountains of Appalachia. Opportunities like this – directly bordering Jefferson National Forest – are rare and highly sought after, making this 98+/- acre tract in Wythe County an exceptional find for anyone looking to own a private slice of the Blue Ridge Mountains.

Conveniently located just outside the town of Wytheville, this property offers direct access to endless outdoor recreation while still being close to the region’s most popular attractions.

- 10 minutes to Big Walker Lookout, the gateway to the Big Walker Mountain Scenic Byway, with artisan shops and breathtaking views
- 15 minutes to downtown Wytheville for dining, shopping, and healthcare, including the iconic “Big Pencil” landmark and annual Chautauqua Festival
- ~30 minutes to the New River and New River Trail State Park for hiking, biking, kayaking, and fishing along 57 miles of scenic trails
- ~35 minutes to Hungry Mother State Park in Marion, VA – one of Southwest Virginia’s top family destinations with camping, swimming, hiking, and boating
- ~1 hour to Blacksburg, VA (Virginia Tech) and Bluefield, WV for additional amenities, events, and entertainment
- Just over 1 hour to Grayson Highlands State Park, famous for its wild ponies, high-elevation hiking, and Appalachian Trail access

Whether you’re an avid hunter, outdoorsman, or family searching for a private mountain retreat, this 98+/- acres bordering Jefferson National Forest places you within easy reach of some of Southwest Virginia’s most treasured natural wonders, wineries, and cultural attractions. Schedule your private tour today and explore the possibilities!

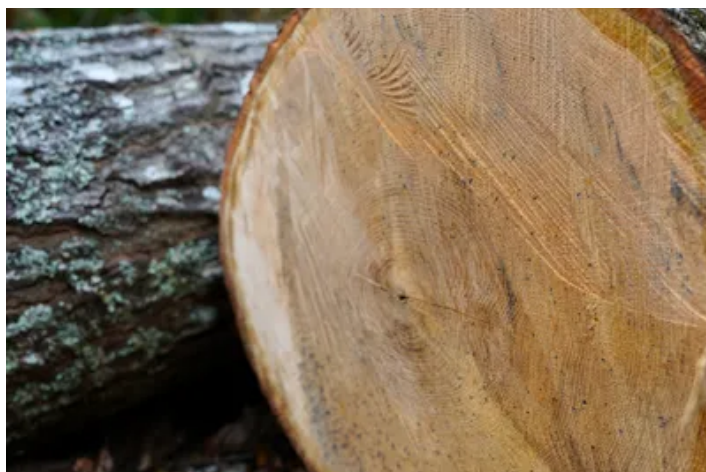
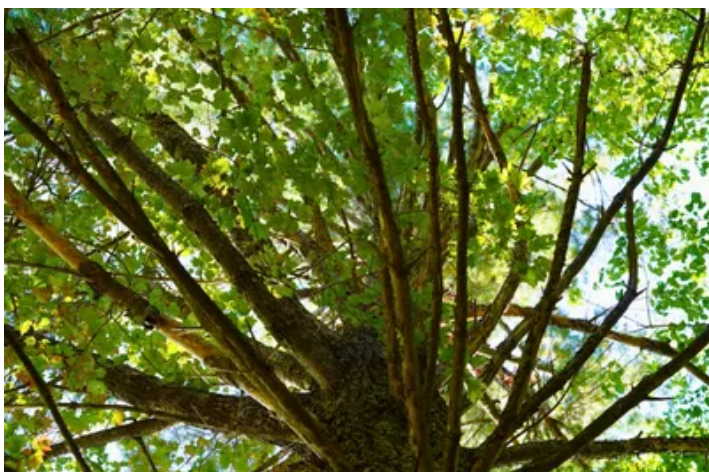
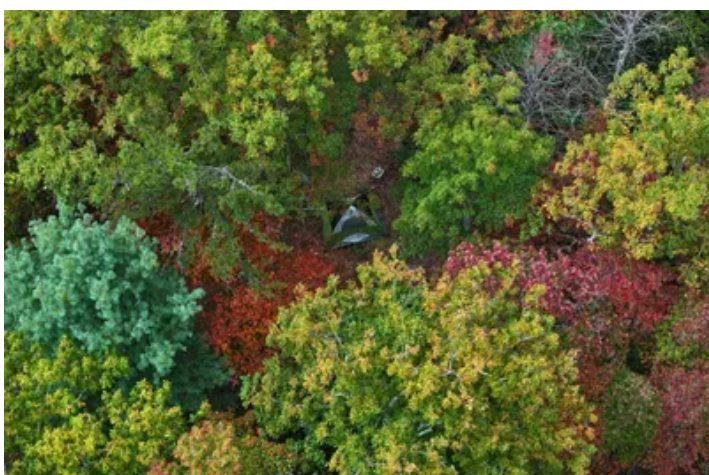
To schedule a showing or inquire about the property, please contact **Justin Rolfe** at [540-299-7238](tel:540-299-7238) / jrolfe@landandluxury.com.

Get To Know the Area:

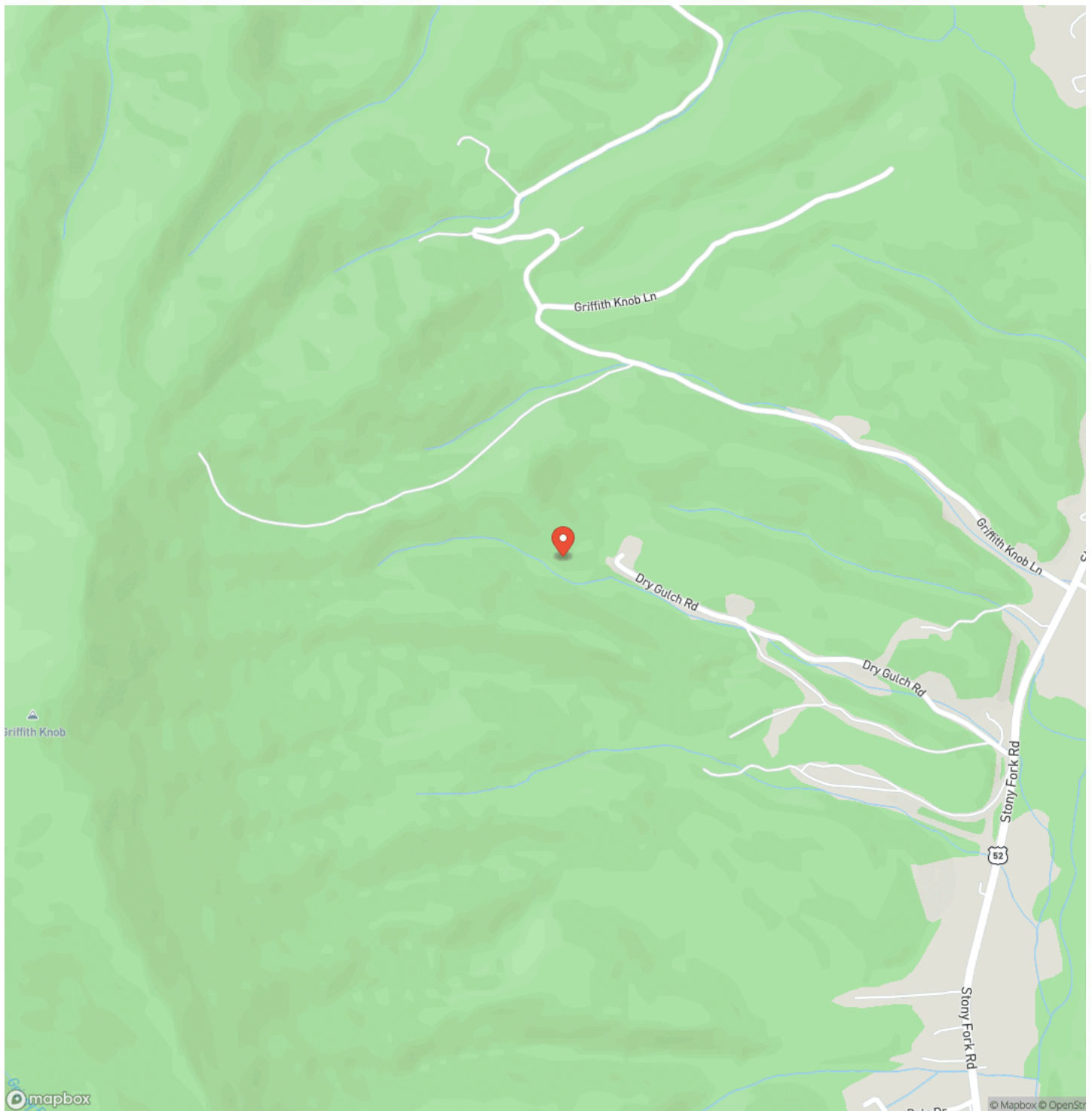
- Take in the Views at [Big Walker Lookout](#): Big Walker Lookout stands as the gateway to the Big Walker Mountain Scenic Byway. Climb the 100-foot tower for sweeping 360-degree views of the Appalachian Mountains, browse the Country Store for local crafts, and soak in the history and beauty of Southwest Virginia.
- Raise a Glass at [Davis Valley Winery & Distillery](#): Located just outside Wytheville, Davis Valley combines vineyards and a craft distillery on the rolling mountain slopes. With wine tastings, small-batch spirits, and panoramic views, it’s a perfect spot to unwind after a day of exploring.
- Adventure at [Hungry Mother State Park](#): Hungry Mother is one of Virginia’s premier family-friendly state parks, offering camping, a sandy beach for swimming, paddle boating, hiking, and fishing in a pristine mountain lake setting.

- Hike with Wild Ponies at [Grayson Highlands State Park](#): Known for its free-roaming wild ponies, high-elevation hiking trails, and direct access to the Appalachian Trail, Grayson Highlands showcases some of the most rugged and breathtaking views in the Blue Ridge Mountains.
- Discover [Downtown Wytheville](#): Enjoy local restaurants, craft breweries, boutique shopping, and cultural events, including the annual Chautauqua Festival. Don't miss snapping a photo with the famous "Big Pencil" landmark downtown!

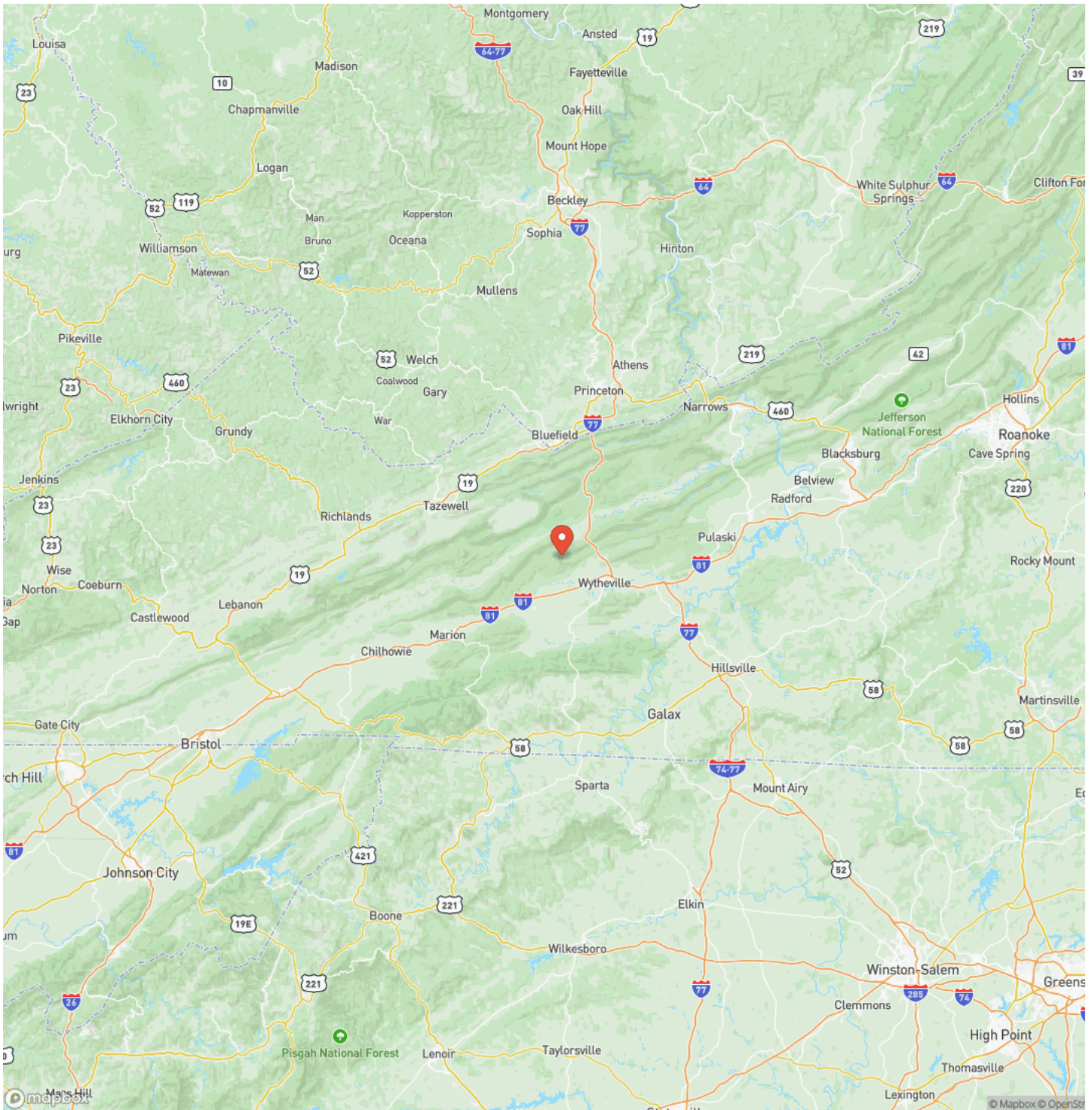
**Appalachian Overlook: 98+/- Unrestricted Acres Bordering Jefferson National Forest in Wythe County, VA
Wytheville, VA / Wythe County**



Locator Map



Locator Map



Satellite Map



**Appalachian Overlook: 98+/- Unrestricted Acres Bordering Jefferson National Forest in Wythe County, VA
Wytheville, VA / Wythe County**

LISTING REPRESENTATIVE

For more information contact:



Representative

Justin Rolfe - VA Principal Broker

Mobile

(540) 299-7238

Email

jrolfe@mossyoakproperties.com

Address

City / State / Zip

NOTES

[illegible]

This image shows a blank sheet of white paper with horizontal ruling lines. The lines are evenly spaced and run across the width of the page. There are no margins, text, or other markings on the paper.



DISCLAIMERS

Pictured vehicles and personal property are not part of the sale; they are used for marketing purposes only. Information shown on these drawings/maps/charts is compiled from numerous sources and may not be complete or accurate. Buyer to verify all information. Seller and Mossy Oak Properties Land & Luxury are not liable for any persons entering the property. All persons entering the property assume all risks and liabilities and agree to indemnify, defend, and hold harmless the seller, along with Mossy Oak Properties Land & Luxury, its affiliates, officers, directors, managers, agents, and representatives.



Mossy Oak Properties Land and Luxury
114 Morlake Drive Suite 103
Mooresville, NC 28117
(800) 287-1523
MossyOakProperties.com

