

Nine Mile Creek Acreage
330871 COUNTY ROAD G
Minatare, NE 69356

\$749,900
78.540± Acres
Scotts Bluff County



Nine Mile Creek Acreage
Minatare, NE / Scotts Bluff County

SUMMARY

Address

330871 COUNTY ROAD G

City, State Zip

Minatare, NE 69356

County

Scotts Bluff County

Type

Hunting Land, Ranches, Recreational Land, Residential Property,
Horse Property, Single Family

Latitude / Longitude

41.917281 / -103.423551

Taxes (Annually)

3250

Dwelling Square Feet

2807

Bedrooms / Bathrooms

3 / 3

Acreage

78.540

Price

\$749,900

Property Website

<https://www.ranchandrecreation.com/property/nine-mile-creek-acreage-scotts-bluff-nebraska/90261/>



PROPERTY DESCRIPTION

Nine Mile Creek Acreage

78.54± Acres - Western Nebraska - Offered at \$749,000

Tract 1: Home & Improvements on **3.34± Acres - \$599,000**

Tract 2: Grassland & Open Ground on **75.2± Acres - \$150,000**

Total Property: 78.54± Acres

Exact acres to be determined by survey.

Location & Setting

The Nine Mile Creek Acreage sits just east of Minatare, Nebraska, in Scotts Bluff County, offering a rare combination of productive grazing land, a beautifully renovated log home, and excellent access to regional amenities. The property lies just **3 miles east of Lake Minatare**, a popular destination for boating, fishing, and recreation, and within short driving distance of Scottsbluff and Chimney Rock National Historic Site.

The property is bordered along the north by the low-line irrigation canal, and a gravel county road provides convenient year-round access to the homeplace while maintaining privacy.

TRACT 1 - Home & Improvements (3.34± Acres)

Offered at \$599,000

Residence

The residence features a 2-story log home originally built in 1908 with extensive remodeling and modern updates throughout.

- **Living Space:** 1,716 sq ft main level, 2,807 sq ft total finished area
- **Bedrooms/Bathrooms:** 3 bedrooms, 3 bathrooms
- **Basement:** 832 sq ft
- **Exterior:** Wood log siding with stone veneer accents
- **Roof:** Composition shingles
- **Heating/Cooling:** Forced air with dual-zone control (2 updated units)

Interior Features

- Wood and tile flooring throughout
- Renovated kitchen with granite countertops, stainless steel appliances, and custom cabinetry
- Gas fireplace with full stone surround plus an additional wood stove
- Wood-finished ceilings enhancing the log-home character
- Spacious master suite with walk-in closet, tiled shower, and antique-style soaking tub
- Rustic lower level finished with reclaimed barnwood and tin accents

Exterior & Improvements

- Stamped concrete patio ideal for entertaining
- Mature landscaping, shade trees, fruit trees, and established windbreaks

- Attached insulated garage (525 sq ft)
- Covered wood deck (464 sq ft)
- Utility building (423 sq ft, concrete floor & metal construction)
- Chicken coop, storage shed, paved areas, fencing, and garden space

This tract is well suited for comfortable country living, hobby ranching, or a rural lifestyle with modern conveniences.

TRACT 2 - Grassland & Future Homesite (75.2± Acres)

Offered at \$150,000

This 75.2± acre tract offers an outstanding opportunity for buyers seeking a combination of **grazing income potential, recreational use, and an ideal future homesite location** just minutes from Lake Minatare.

Situated only **approximately 3 miles from Lake Minatare**, this property provides convenient access to boating, fishing, camping, and year-round outdoor recreation while maintaining the privacy and wide-open space of rural western Nebraska living.

The smooth terrain features productive native grasses and excellent soils, making it well suited for livestock grazing. Historically, the acreage has supported approximately **40 cow/calf pairs during the summer grazing season**, offering immediate agricultural utility and income potential.

In addition to its grazing value, the tract presents an attractive **future building site opportunity**, with multiple elevated locations that would provide scenic views of the surrounding countryside. Its proximity to paved roads, utilities in the area, and nearby recreational amenities makes this a highly desirable location for a rural residence, hobby ranch, or weekend getaway property.

Land Highlights

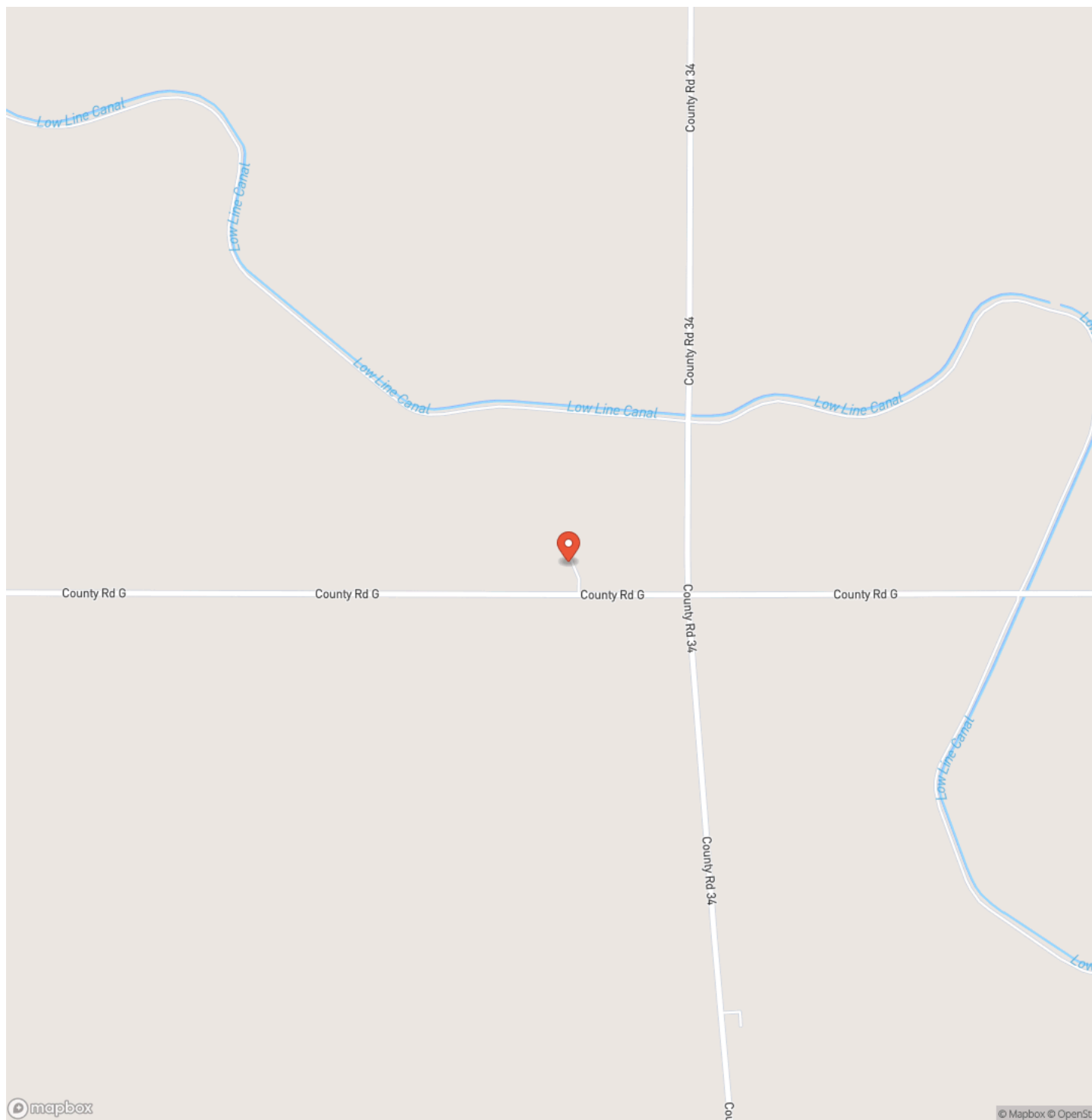
- 75.2± acres of productive native grassland
- Located just minutes from Lake Minatare
- Excellent potential for a future rural homesite
- Supports seasonal grazing operations
- Gently rolling terrain with quality soils
- Easy access from county roads
- Strong long-term investment potential

Whether used for grazing, recreation, or as a future homesite, this tract offers a rare combination of **location, usability, and affordability** in a highly sought-after area of Scotts Bluff County.

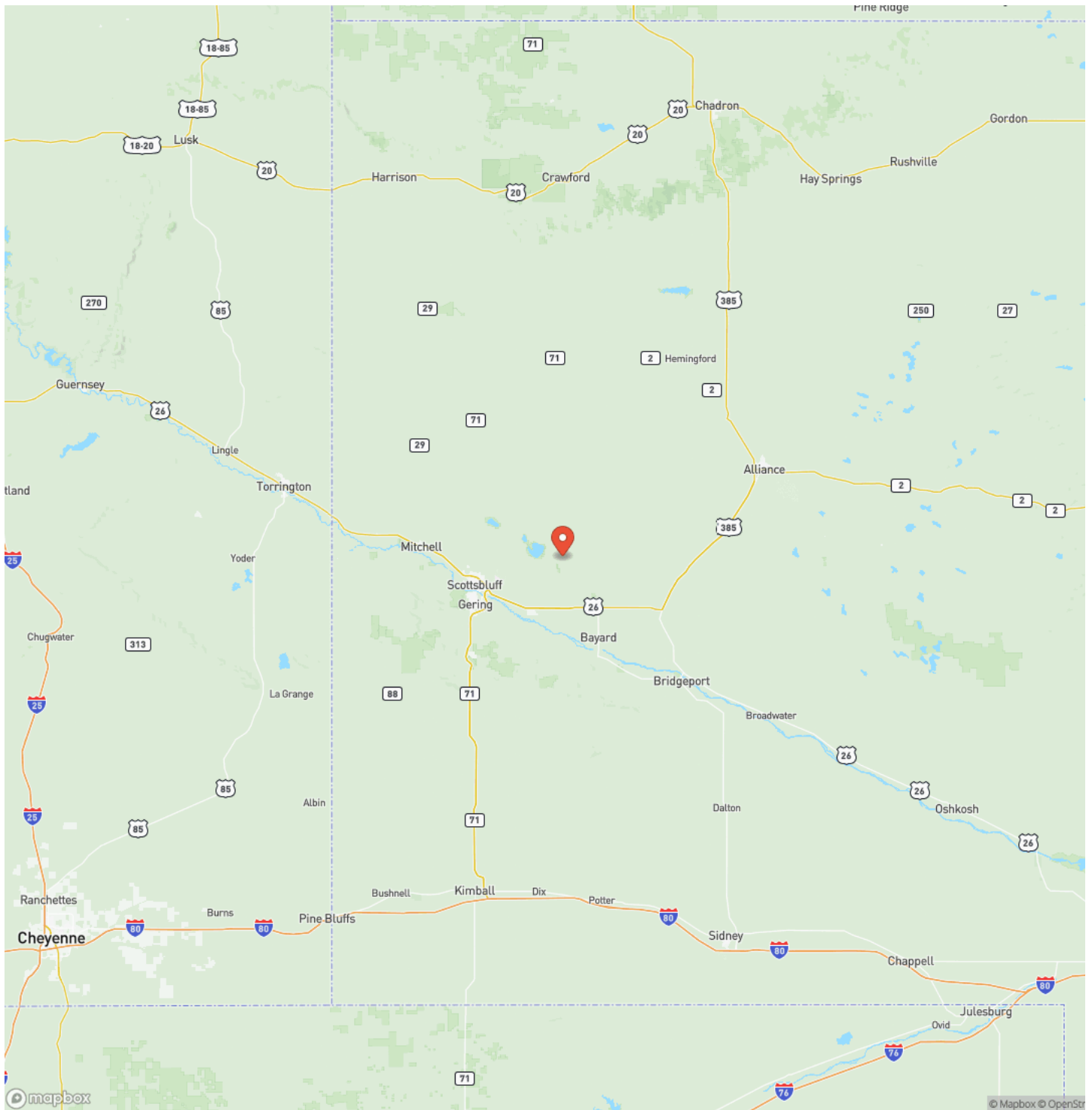
Nine Mile Creek Acreage
Minatare, NE / Scotts Bluff County



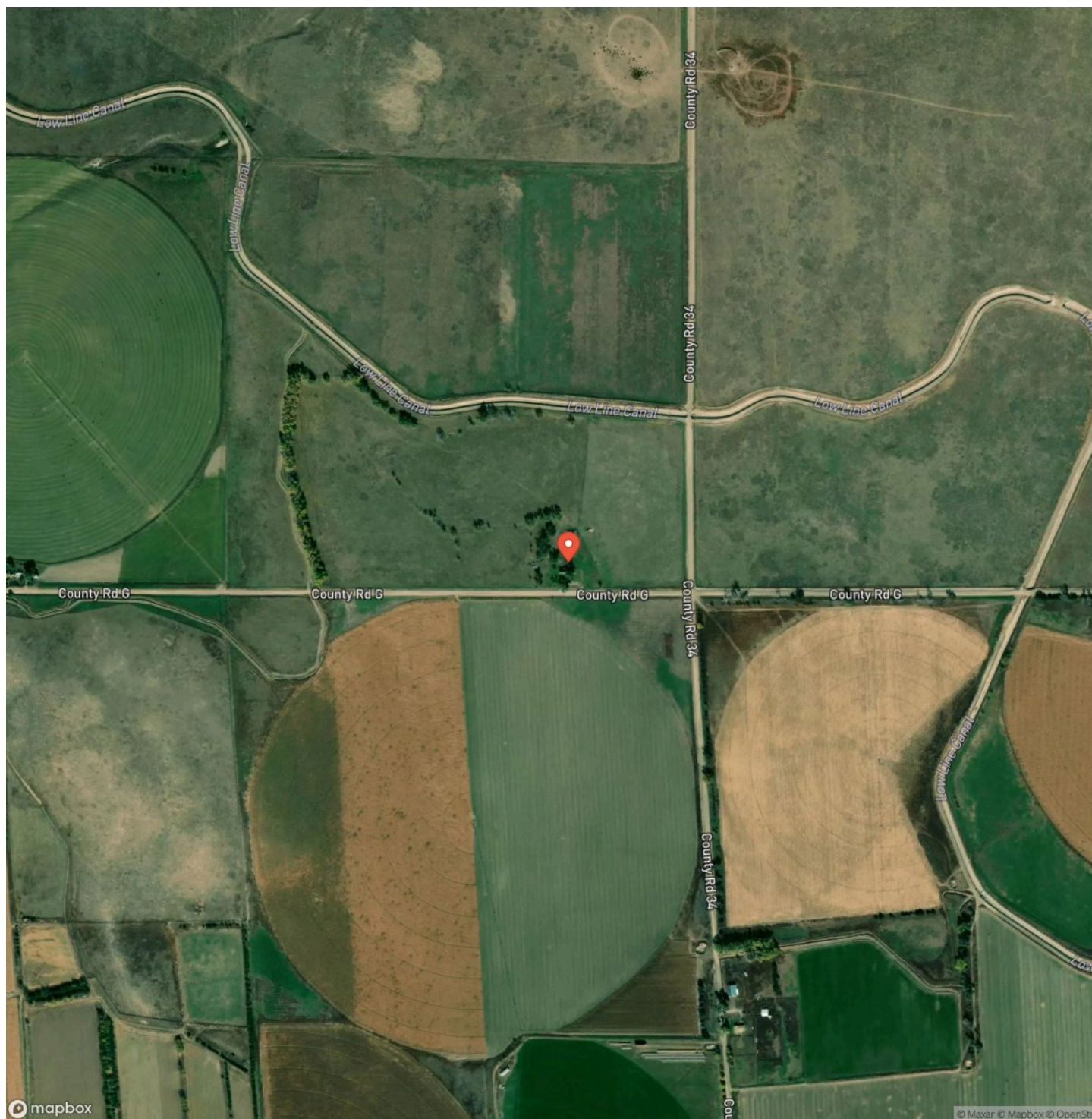
Locator Map



Locator Map



Satellite Map



Nine Mile Creek Acreage

Minatare, NE / Scotts Bluff County

LISTING REPRESENTATIVE

For more information contact:



Representative

Tommy Wiles

Mobile

(308) 360-2030

Email

tommy@ranchandrecreation.com

Address

915 east 8th st

City / State / Zip

NOTES

[illegible]

This image shows a blank sheet of white paper with horizontal ruling lines. The lines are evenly spaced and run across the width of the page. There are no margins, text, or other markings on the paper.

DISCLAIMERS

#1 Properties Ranch & Recreation LLC uses reasonable efforts in collecting and preparing materials and information regarding properties. While the information is believed to be reliable, due to the rapidly changing nature of the real estate market and our reliance on information provided by outside resources, the information is not guaranteed. Information is also subject to change, withdrawal, or correction.

Potential purchasers should independently verify any information and conduct their own due diligence. #1 Properties Ranch & Recreation LLC makes no representations or warranties about the property or the accuracy or completeness of the information concerning the property, including, but not limited to, each of the following: (a) acreage counts and legal descriptions, (b) distances, sizes, square footage, and other measurements, (c) water and mineral rights information, and (d) soil types, production, carrying capacity, or income potential.

Information is only provided for the purpose of assisting potential purchasers in identifying prospective properties they may be interested in purchasing. #1 Properties Ranch & Recreation LLC is not liable for any inaccuracies, errors, or omissions regarding information about the property or losses that result from the use of this information. Potential purchasers should conduct their own due diligence, including, but not limited to, a legal and financial review, before purchasing.

#1 Properties Ranch & Recreation
6106 Yellowstone Rd
Cheyenne, WY 82009
(307) 236-8299
ranchandrecreation.com
