

**10 acres of Multi Use Land for Sale in Wayne County,
NC!**
Off Hwy 70 W
Goldsboro, NC 27530

\$450,000
9.950± Acres
Wayne County



10 acres of Multi Use Land for Sale in Wayne County, NC! Goldsboro, NC / Wayne County

SUMMARY

Address

Off Hwy 70 W

City, State Zip

Goldsboro, NC 27530

County

Wayne County

Type

Farms, Recreational Land, Undeveloped Land, Business Opportunity

Latitude / Longitude

35.42612 / -78.05812

Acreage

9.950

Price

\$450,000

Property Website

<https://www.mossyoakproperties.com/property/10-acres-of-multi-use-land-for-sale-in-wayne-county-nc-wayne-north-carolina/84765/>



10 acres of Multi Use Land for Sale in Wayne County, NC! Goldsboro, NC / Wayne County

PROPERTY DESCRIPTION

For immediate assistance with this listing call Morgan Ingram at [919-429-1139](tel:919-429-1139).

Prime 10-Acre Tract with Highway 70 Frontage – Goldsboro, NC! Call Morgan Ingram at [919-429-1139](tel:919-429-1139) to schedule a showing today!

Opportunity awaits with this exceptional 10±/- acre parcel located in the heart of Wayne County, just minutes from everything that Goldsboro, NC has to offer!

Boasting approximately 180 feet of direct frontage on Highway 70, this property offers outstanding visibility and access—perfect for future development, a commercial location, or even a private estate.

Approximately 7 acres are cleared, level farmland, ideal for building whatever your dreams have been waiting to unfold! The remaining acreage is wooded, with a peaceful creek meandering along the west property line in the woods.

This property has immediate access to the Rosewood community which is well loved in Wayne County!

Restaurants, Shopping, Grocery Stores, Gas Stations, & whatever else you may need is within 5-15 minutes of this property!

With this location you are minutes and easy commutes to wherever you may need to go!

- 12 minutes to UNC Health Care and Medical Offices
- 10 minutes to downtown Goldsboro
- 23 minutes to Smithfield, NC
- 35 minutes to Clayton, NC
- 50 minutes to Raleigh, NC
- 60 minutes to Greenville, NC

This tract is not located in a FEMA floodplain, giving you added peace of mind and development flexibility.

With prime soils throughout, the possibilities are wide open—whether you're looking for your next investment opportunity, a commercial build site, or a multi-use property with room to grow. You have so many options with this parcel!

Don't miss your chance to own a highly visible and versatile piece of land in Goldsboro and desirable areas!!

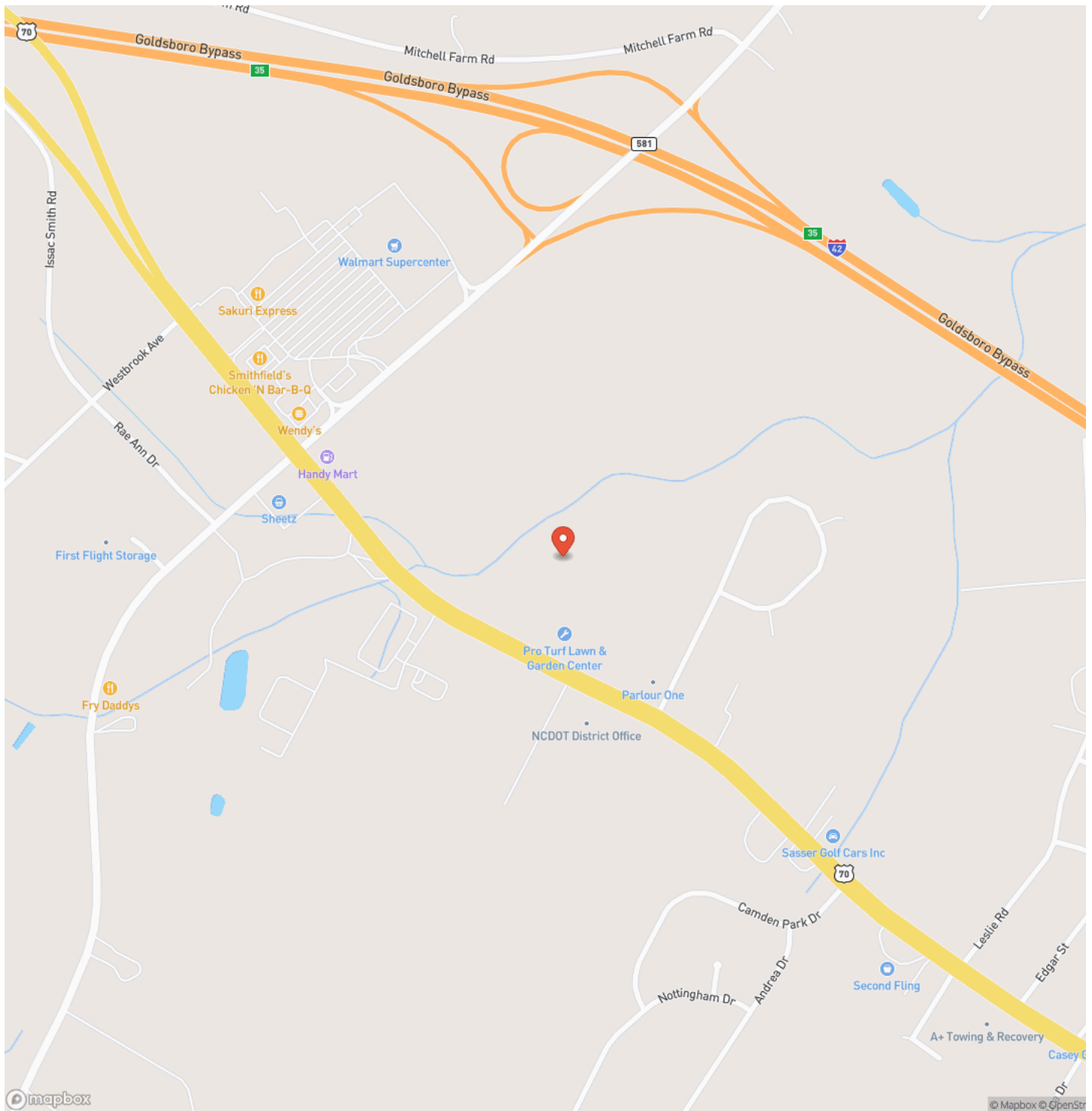
For more information on this and other land for sale in Wayne County, contact Morgan Ingram at [919-429-1139](tel:919-429-1139) or by email at mingram@mossyoakproperties.com, or visit landandfarmsrealty.com.

**10 acres of Multi Use Land for Sale in Wayne County, NC!
Goldsboro, NC / Wayne County**



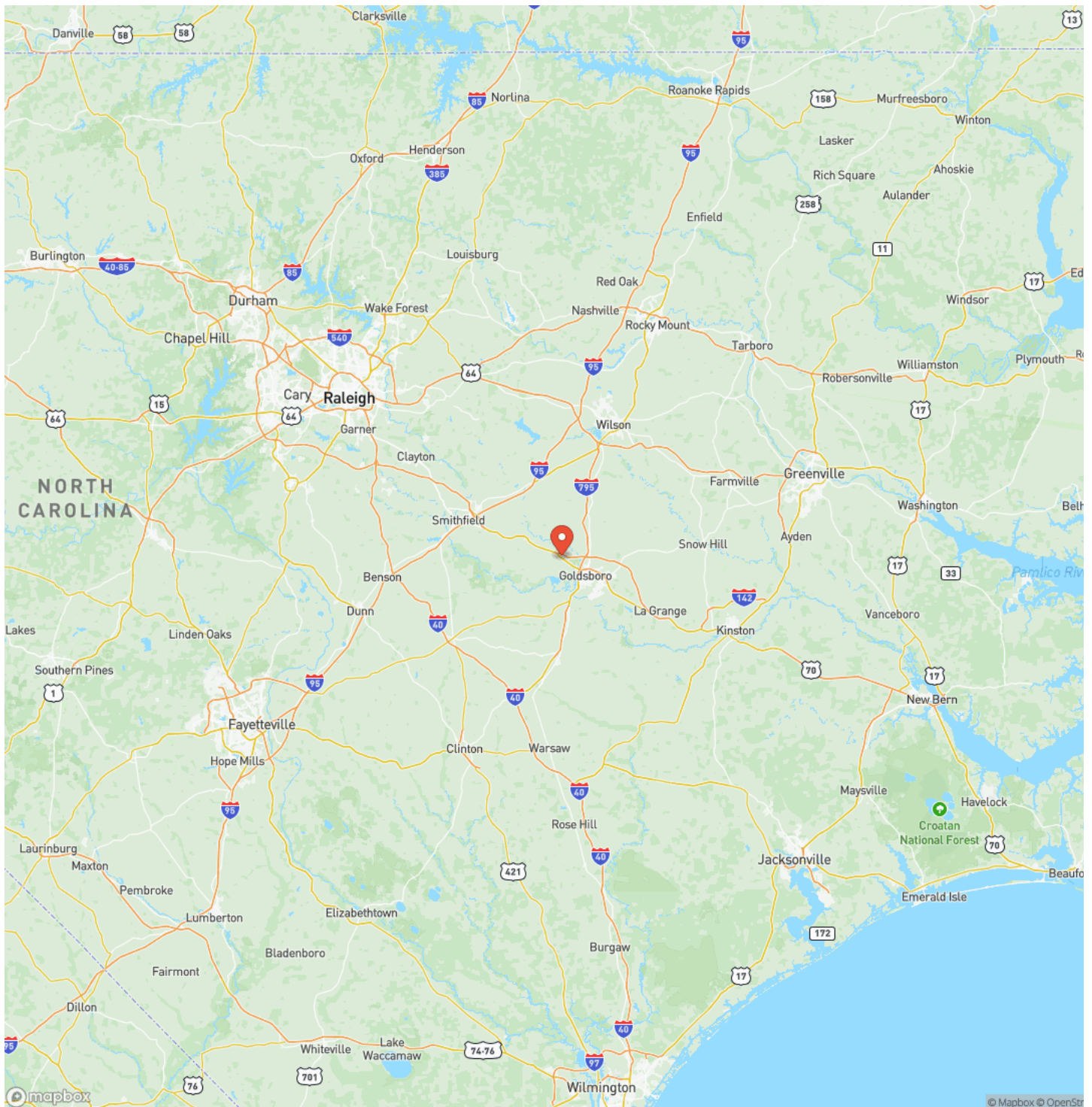
10 acres of Multi Use Land for Sale in Wayne County, NC!
Goldsboro, NC / Wayne County

Locator Map



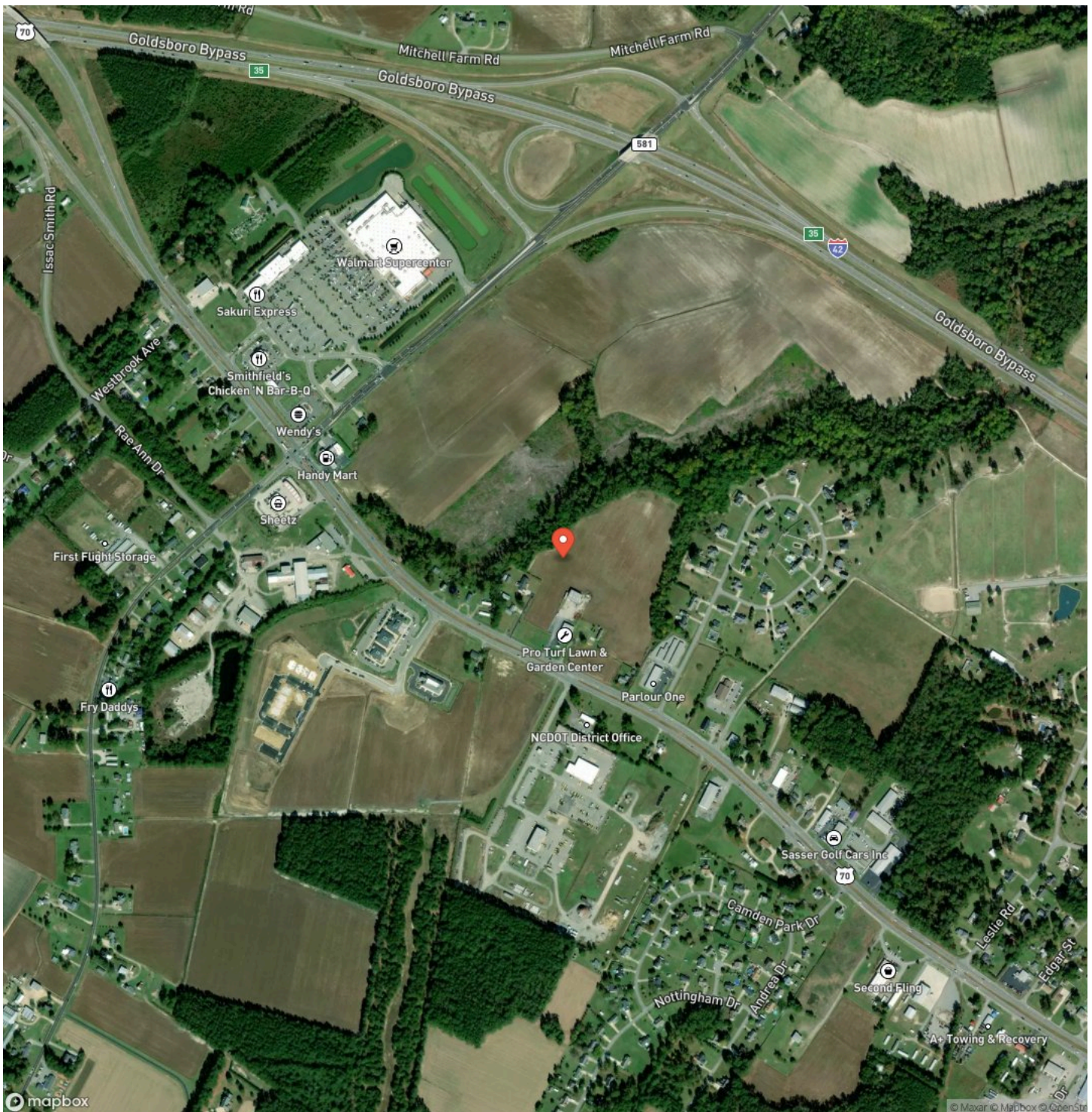
**10 acres of Multi Use Land for Sale in Wayne County, NC!
Goldsboro, NC / Wayne County**

Locator Map



10 acres of Multi Use Land for Sale in Wayne County, NC!
Goldsboro, NC / Wayne County

Satellite Map



10 acres of Multi Use Land for Sale in Wayne County, NC! Goldsboro, NC / Wayne County

LISTING REPRESENTATIVE

For more information contact:



Representative

Morgan Ingram

Mobile

(919) 429-1139

Office

(844) 480-5263

Email

mingram@mossyoakproperties.com

Address

626 Lewis Road

City / State / Zip

NOTES

[illegible]

This image shows a blank sheet of white paper with horizontal ruling lines. The lines are evenly spaced and run across the width of the page. There are no margins, text, or other markings on the paper.



DISCLAIMERS

Information in this brochure is provided solely for information purposes and does not constitute an offer to sell or advertise real estate outside the states in which broker or agent licensed. The information presented has been obtained from sources deemed to be reliable, but is not guaranteed or warranted by the agent, broker, or the sellers of these properties. This offering is subject to errors, omissions, prior sale, price change, correction or withdrawal from the market without notice. All references to age, square footage, income, expenses, acreage, carrying capacity, and land classification, etc. are approximate. Prospective buyers are chargeable with and expected to conduct their own independent investigation of the information and the property and to rely only on those results. Sellers reserve the right to accept or reject any and all offers without liability to any buyer or cooperating broker.

Maps are provided for illustration purposes only, the accuracy is not warranted. Parcels on interactive maps are not adjusted to match aerial backgrounds. This information is for reference purposes only and is not a legal document. Data maps contain errors. The seller and seller's agent are making known to all potential buyers that there may be variations between the location of the existing fence lines and the legal description of the deeded property. Seller and seller's agent make no warranties with regard to the location of the fence lines in relationship to the deeded property lines, nor does the Seller make any warranties or representations with regard to the specific acreage contained within the fenced property lines. Seller is selling the property in an "as is" condition, which includes the location of the fences as they exist. Boundaries shown on the accompanying maps are approximate, based on county parcel data. The maps are not to scale. The accuracy of the maps is not guaranteed. Prospective buyers are encouraged to verify fence lines, deeded property lines and acreages using a licensed surveyor at their own expense.

Mossy Oak Properties Land and Farms Realty
101 Budleigh Street, Suite F
Manteo, NC 27954
(844) 480-5263
www.landandfarmsrealty.com

