

**UPDATED!! 0.54 Acre Residential Lot for Sale in Duplin
County, NC!**
196 Cypress Pt
Wallace, NC 28466

\$23,900
0.540± Acres
Duplin County



UPDATED!! 0.54 Acre Residential Lot for Sale in Duplin County, NC!
Wallace, NC / Duplin County

SUMMARY

Address

196 Cypress Pt

City, State Zip

Wallace, NC 28466

County

Duplin County

Type

Undeveloped Land, Lot

Latitude / Longitude

34.73171 / -77.92999

Acreage

0.540

Price

\$23,900

Property Website

<https://www.mossyoakproperties.com/property/updated-0-54-acre-residential-lot-for-sale-in-duplin-county-nc-duplin-north-carolina/70296/>



UPDATED!! 0.54 Acre Residential Lot for Sale in Duplin County, NC! Wallace, NC / Duplin County

PROPERTY DESCRIPTION

For immediate assistance with this listing call Morgan Ingram at [919-429-1139](tel:919-429-1139).

Beautiful 0.54 acre Estate Homesite lot located in the Bluffs at River Landing! Call Morgan Ingram at [919-429-1139](tel:919-429-1139) to schedule a showing today!

Looking to build your dream home? Look no further than in desired gated community of River Landing, located in Wallace, North Carolina. With its stunning landscapes, unique water features, and tons of ammentities- this residential lot is a gem waiting to be yours!

This 0.54 acre Estate Homesite lot is located in the Bluffs of the River Landing Community. When entering into this community you will see the beautiful grand clubhouse and golf courses, along with stunning landscapes.

For this particular lot the minimum heated square footage for this lot is 2200-2500 square feet, along with restrictions in place for the subdivision.

There is an endless amount of perks for this community, River Landing is renowned for its award-winning golf courses, meticulously designed by nationally acclaimed architect Clyde Johnston. Whether you're a seasoned golfer or just starting out, these courses are sure to impress.

For those seeking an active lifestyle, the community features a fitness center offering a variety of fitness classes, for those who like to stay active- you will enjoy it's incredible facilities! Also- when it's time to relax, take a dip in the heated outdoor pool, perfect for after a long week!

The grand clubhouse is a hub of activity, providing opportunities for casual and fine dining. Live music and events are also held here, adding a touch of entertainment and socialization to your life at River Landing.

Nature enthusiasts will appreciate the walking and bike trails scattered throughout the neighborhood, inviting you to explore and enjoy the outdoors. Additionally, there are playgrounds, tennis courts, indoor and outdoor pickleball courts, and a basketball court for members to enjoy!

What truly sets River Landing apart is the sense of community. With numerous events held throughout the year, you'll have plenty of opportunities to network with others in your community!

None of this property is encompassed in a FEMA floodplain.

Conveniently located just 40 minutes from Wilmington, NC, famous for its beautiful beaches, shopping, and dining, you'll have easy access to what North Carolina's coast has to offer. Additionally, the property is a mere 90-minute commute to Raleigh, NC, opening up even more possibilities for work and entertainment.

This residential lot at River Landing offers a unique opportunity to become part of a remarkable community. With its stunning surroundings, impressive amenities, and convenient location, it's the perfect place to build your dream home and embrace a life of luxury and tranquility.

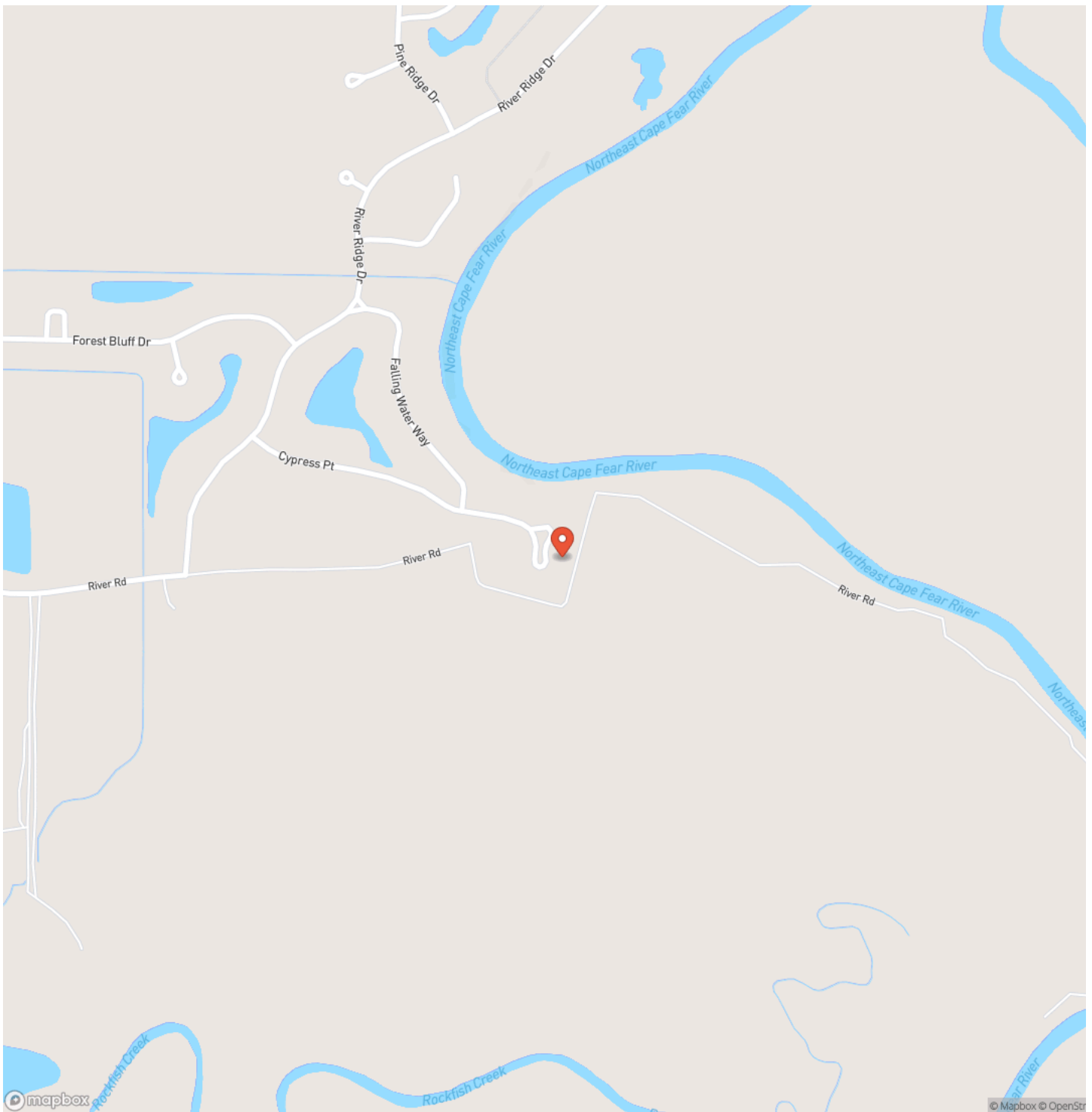
For more information on this and other land for sale in Duplin County, contact Morgan Ingram at [919-429-1139](tel:919-429-1139) or by email at mingram@mossyoakproperties.com, or visit landandfarmsrealty.com.



UPDATED!! 0.54 Acre Residential Lot for Sale in Duplin County, NC!
Wallace, NC / Duplin County

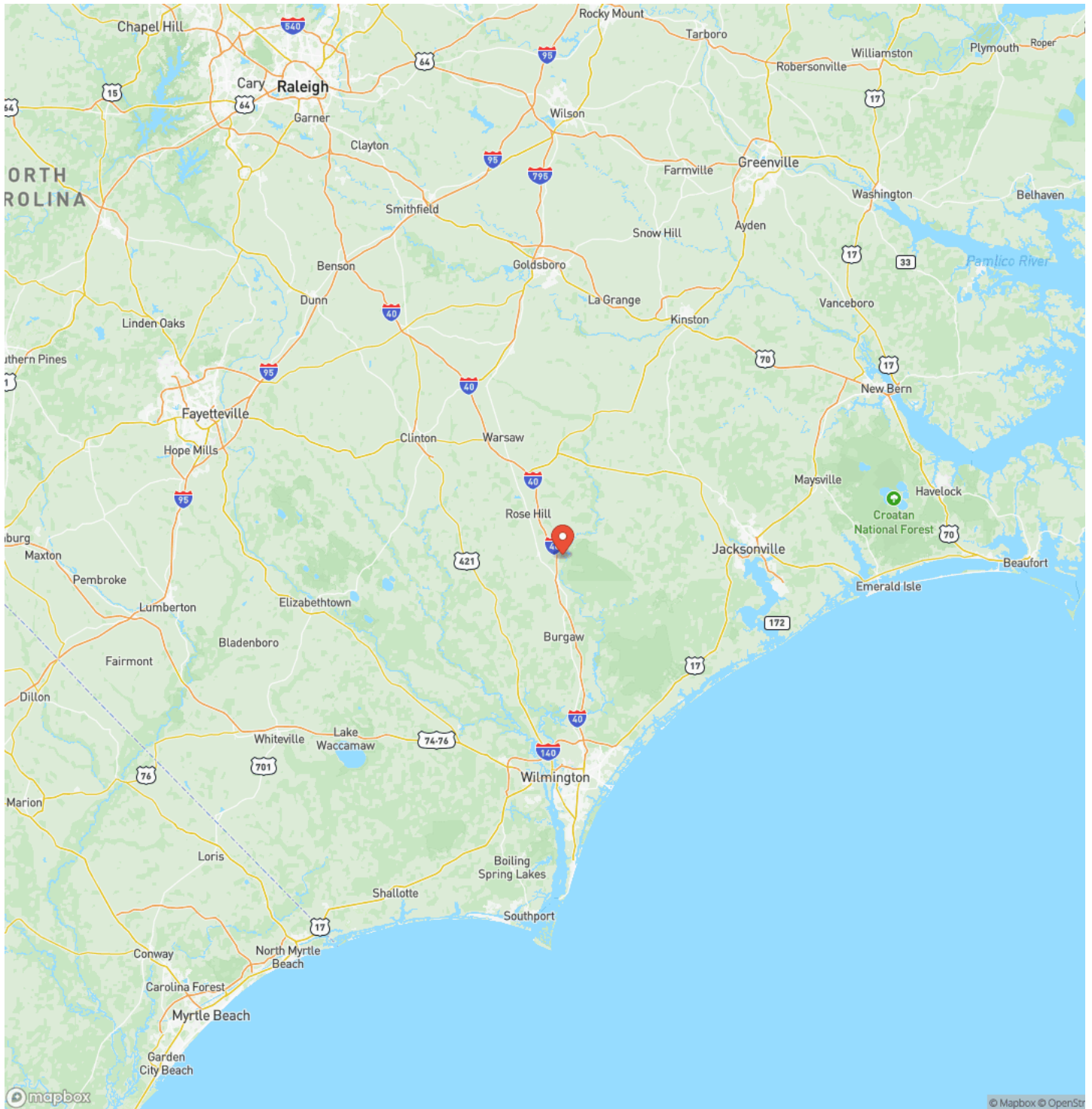


Locator Map



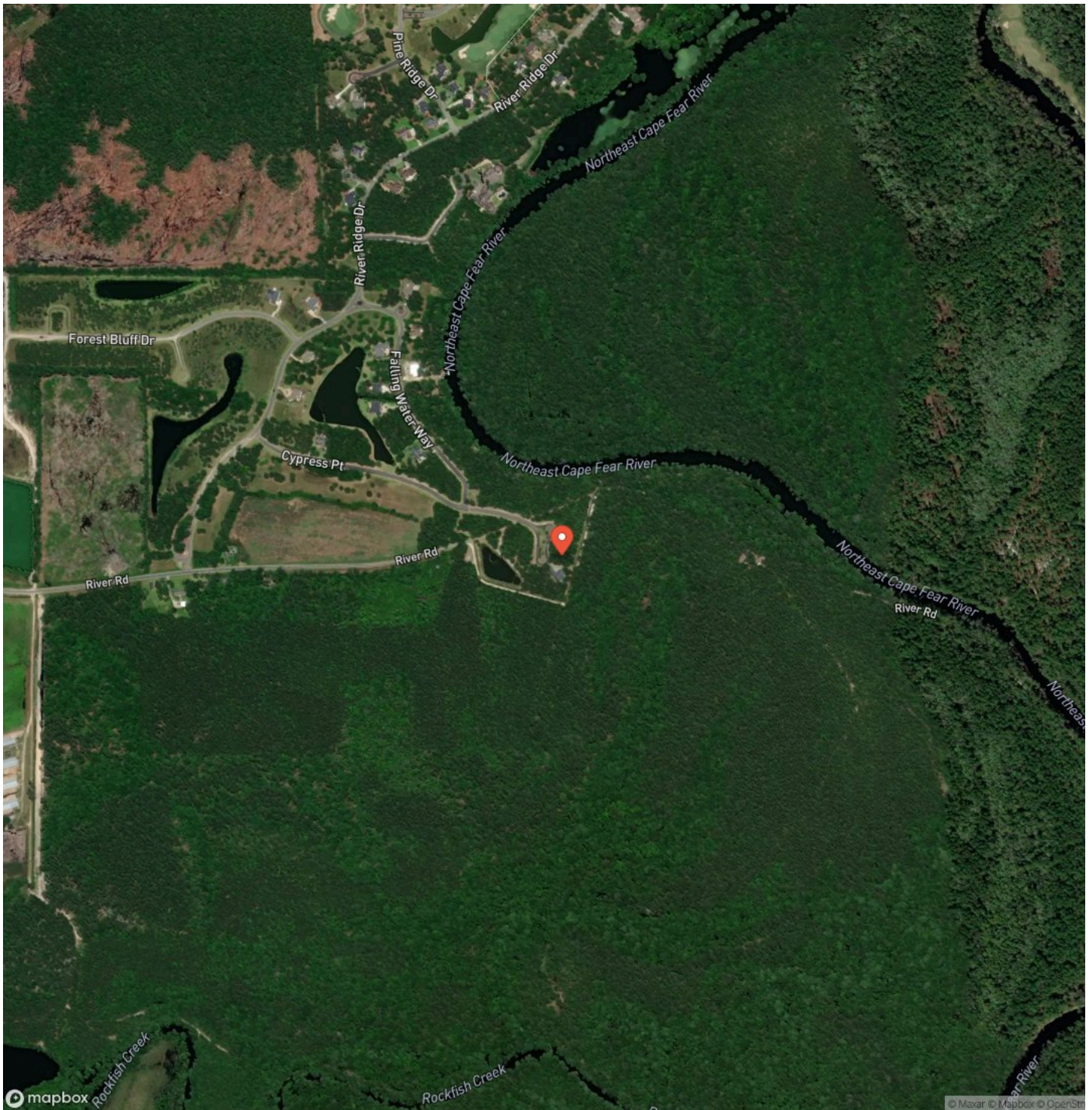
UPDATED!! 0.54 Acre Residential Lot for Sale in Duplin County, NC!
Wallace, NC / Duplin County

Locator Map



UPDATED!! 0.54 Acre Residential Lot for Sale in Duplin County, NC!
Wallace, NC / Duplin County

Satellite Map



UPDATED!! 0.54 Acre Residential Lot for Sale in Duplin County, NC! Wallace, NC / Duplin County

LISTING REPRESENTATIVE

For more information contact:



Representative

Morgan Ingram

Mobile

(919) 429-1139

Office

(844) 480-5263

Email

mingram@mossyoakproperties.com

Address

626 Lewis Road

City / State / Zip

NOTES

This image shows a blank sheet of white paper with horizontal ruling lines. The lines are evenly spaced and extend across the width of the page. There are no margins, text, or other markings on the paper.

This image shows a blank sheet of white paper with horizontal ruling lines. The lines are evenly spaced and run across the width of the page. There are no margins, text, or other markings on the paper.



MORE INFO ONLINE:
www.landandfarmsrealty.com

DISCLAIMERS

Information in this brochure is provided solely for information purposes and does not constitute an offer to sell or advertise real estate outside the states in which broker or agent licensed. The information presented has been obtained from sources deemed to be reliable, but is not guaranteed or warranted by the agent, broker, or the sellers of these properties. This offering is subject to errors, omissions, prior sale, price change, correction or withdrawal from the market without notice. All references to age, square footage, income, expenses, acreage, carrying capacity, and land classification, etc. are approximate. Prospective buyers are chargeable with and expected to conduct their own independent investigation of the information and the property and to rely only on those results. Sellers reserve the right to accept or reject any and all offers without liability to any buyer or cooperating broker.

Maps are provided for illustration purposes only, the accuracy is not warranted. Parcels on interactive maps are not adjusted to match aerial backgrounds. This information is for reference purposes only and is not a legal document. Data maps contain errors. The seller and seller's agent are making known to all potential buyers that there may be variations between the location of the existing fence lines and the legal description of the deeded property. Seller and seller's agent make no warranties with regard to the location of the fence lines in relationship to the deeded property lines, nor does the Seller make any warranties or representations with regard to the specific acreage contained within the fenced property lines. Seller is selling the property in an "as is" condition, which includes the location of the fences as they exist. Boundaries shown on the accompanying maps are approximate, based on county parcel data. The maps are not to scale. The accuracy of the maps is not guaranteed. Prospective buyers are encouraged to verify fence lines, deeded property lines and acreages using a licensed surveyor at their own expense.

Mossy Oak Properties Land and Farms Realty
101 Budleigh Street, Suite F
Manteo, NC 27954
(844) 480-5263
www.landandfarmsrealty.com

