

UPDATED!! 12.61 acres of Recreational Timberland for Sale in Lee County NC!
Off T Tarpey Ln
Sanford, NC 27330

\$224,999
12.610± Acres
Lee County



**UPDATED!! 12.61 acres of Recreational Timberland for Sale in Lee County NC!
Sanford, NC / Lee County**

SUMMARY

Address

Off T Tarpey Ln

City, State Zip

Sanford, NC 27330

County

Lee County

Type

Hunting Land, Timberland, Recreational Land, Undeveloped Land

Latitude / Longitude

35.53022 / -79.1458

Acreage

12.610

Price

\$224,999

Property Website

<https://www.mossoakproperties.com/property/updated-12-61-acres-of-recreational-timberland-for-sale-in-lee-county-nc-lee-north-carolina/94070/>



UPDATED!! 12.61 acres of Recreational Timberland for Sale in Lee County NC! Sanford, NC / Lee County

PROPERTY DESCRIPTION

This 12.61 acre Sanford tract offers strong long-term timber investment potential with a healthy mix of hardwoods and pines. The property shows plenty of wildlife activity making it a great spot for deer, turkey and a variety of small game hunting. If you're after a property that offers strong value, quiet surroundings, and plenty of space for outdoor recreation, this is for you!

Discover 12.61 acres of unrestricted timberland in a quiet and secluded area of Sanford, NC. This property consists of two adjoining parcels (8.17 acres and 4.44 acres) that together create a private retreat surrounded by mature timber and abundant wildlife. With railroad tracks running along both sides, the property offers an exceptional sense of privacy and seclusion.

The land features a healthy mix of hardwoods and planted pines at varying stages of growth, providing both scenic appeal and potential long-term timber value. A walk through the property reveals significant deer and other wildlife activity, making it a great option for hunters, outdoor enthusiasts, or anyone looking for a weekend escape.

With no deed restrictions or HOA, the possibilities are wide open. The property could serve as a recreational tract, hunting property, or long-term timber investment, and it also offers the flexibility to create your own private homesite or cabin in the woods.

Conveniently located just minutes from downtown Sanford, U.S. Hwy 1, and surrounding amenities, this tract offers the ideal balance of privacy and accessibility.

Property Highlights:

- 12.61 acres total (two parcels: 8.17 ac + 4.44 ac)
- Access off T Tarpey Ln
- Electric utilities nearby
- Outside FEMA Floodplain and no wetlands present
- Extremely level topography (290'-300') throughout
- Unrestricted land - no HOA or deed restrictions
- Mixture of hardwoods and planted pines
- Excellent hunting and wildlife habitat
- Railroad frontage on both sides creating exceptional privacy
- Potential for long-term timber investment
- Easy access to Sanford, U.S. Hwy 1, and surrounding areas

Approximate Distances:

(5 miles to Sanford, 10 miles to Moncure, 17 miles to Pittsboro, 25 miles to Siler City, and 39 miles to Raleigh)

Don't miss your chance to own a beautiful piece of Lee County.

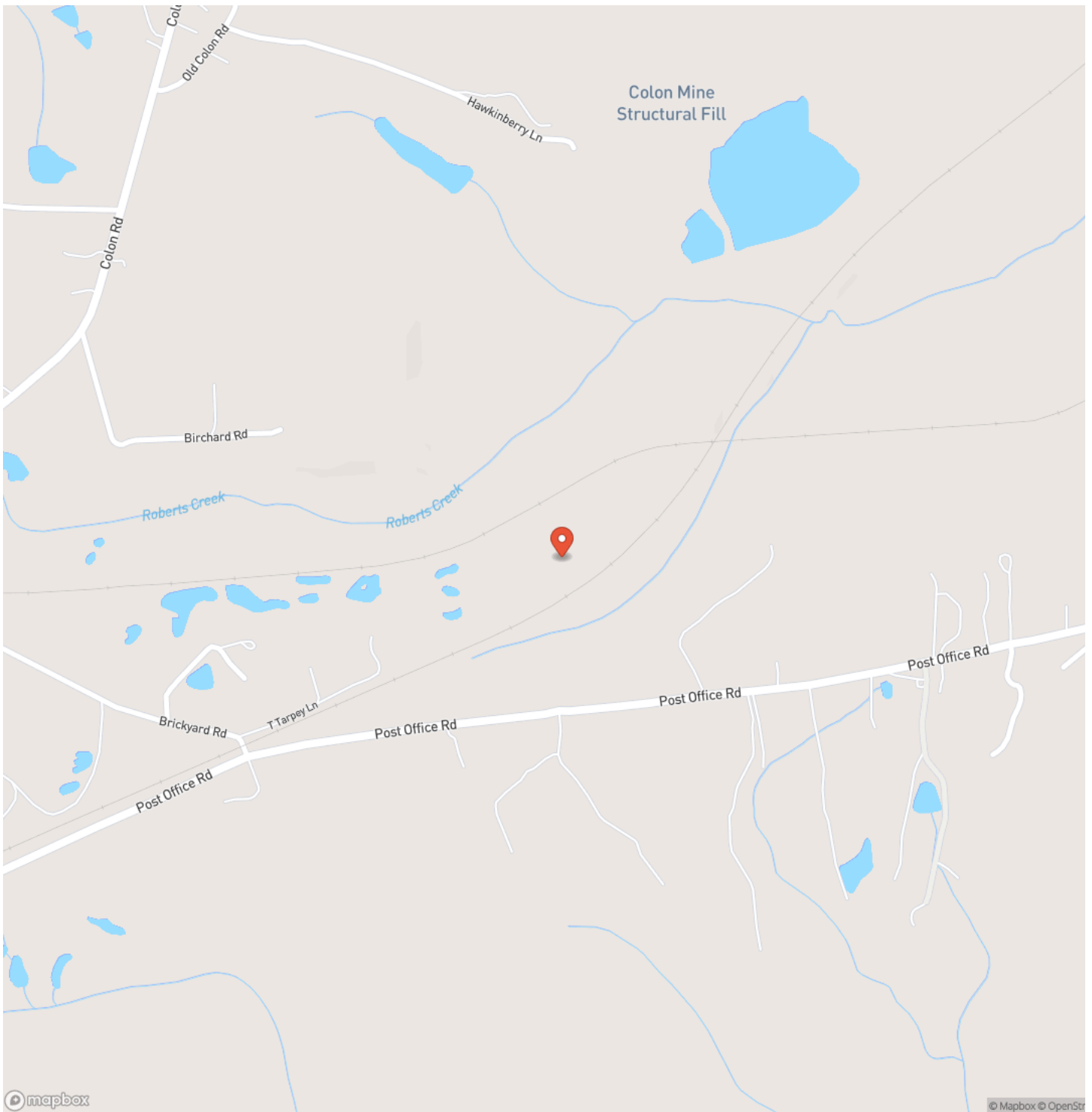
For more information on this and other land for sale in Lee County, contact Jackson Sobocinski at [\(984\) 229-8739](tel:9842298739) or by email at jsobocinski@mossyoakproperties.com, or visit landandfarmsrealty.com.



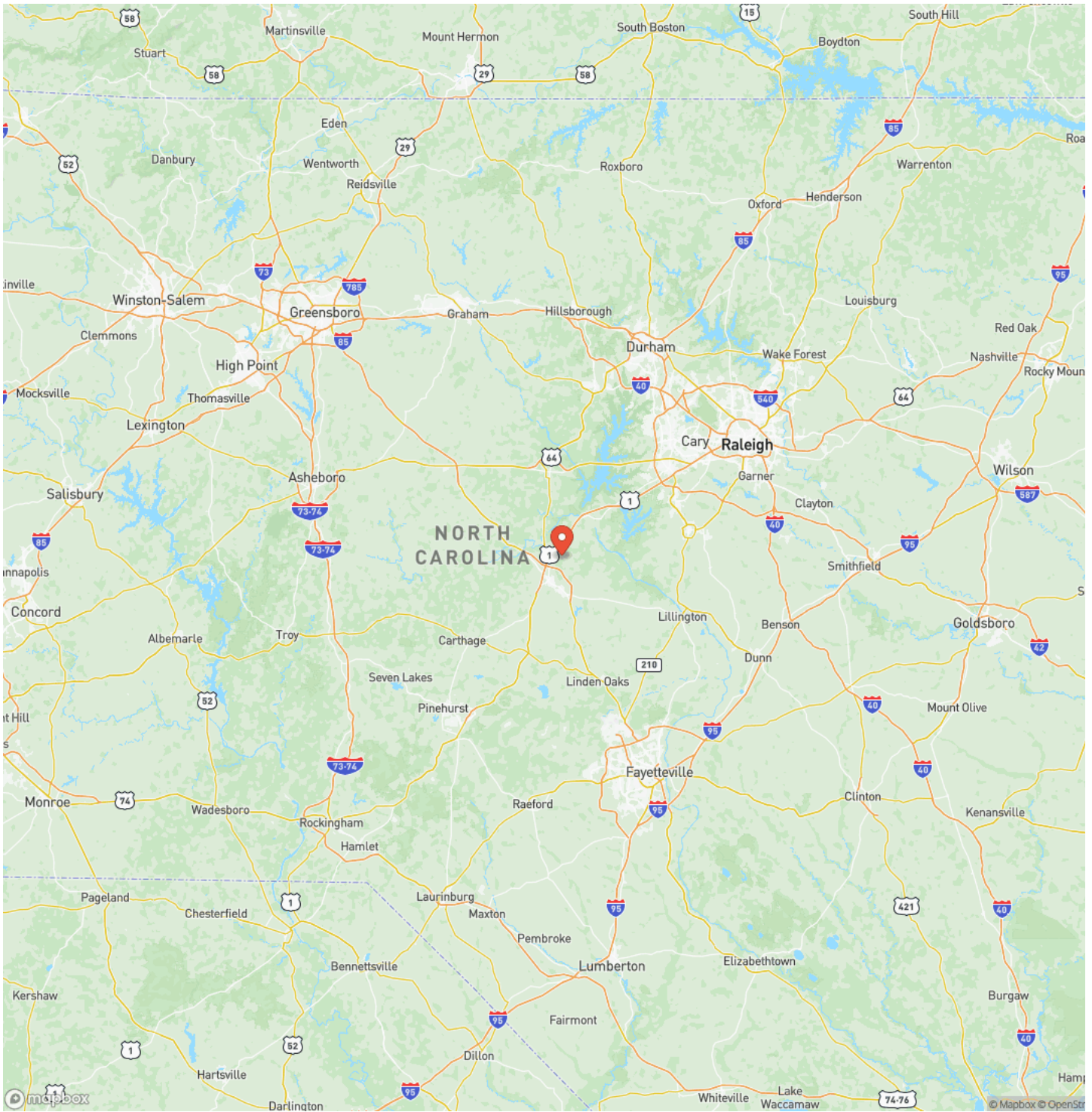
**UPDATED!! 12.61 acres of Recreational Timberland for Sale in Lee County NC!
Sanford, NC / Lee County**



Locator Map

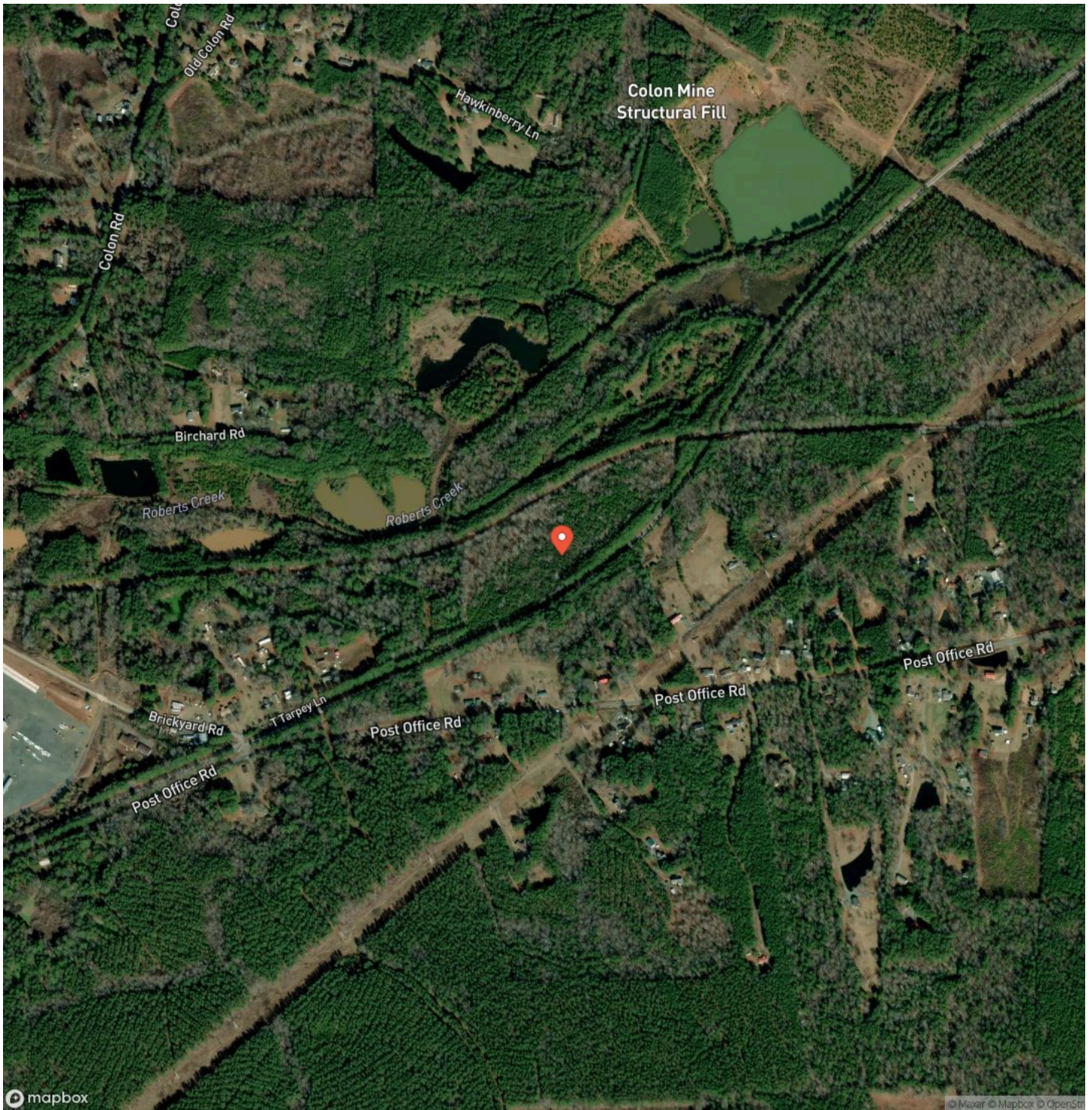


Locator Map



UPDATED!! 12.61 acres of Recreational Timberland for Sale in Lee County NC!
Sanford, NC / Lee County

Satellite Map



mapbox

Maxar © Mapbox © OpenStr

DISCLAIMERS

Information in this brochure is provided solely for information purposes and does not constitute an offer to sell or advertise real estate outside the states in which broker or agent licensed. The information presented has been obtained from sources deemed to be reliable, but is not guaranteed or warranted by the agent, broker, or the sellers of these properties. This offering is subject to errors, omissions, prior sale, price change, correction or withdrawal from the market without notice. All references to age, square footage, income, expenses, acreage, carrying capacity, and land classification, etc. are approximate. Prospective buyers are chargeable with and expected to conduct their own independent investigation of the information and the property and to rely only on those results. Sellers reserve the right to accept or reject any and all offers without liability to any buyer or cooperating broker.

Maps are provided for illustration purposes only, the accuracy is not warranted. Parcels on interactive maps are not adjusted to match aerial backgrounds. This information is for reference purposes only and is not a legal document. Data maps contain errors. The seller and seller's agent are making known to all potential buyers that there may be variations between the location of the existing fence lines and the legal description of the deeded property. Seller and seller's agent make no warranties with regard to the location of the fence lines in relationship to the deeded property lines, nor does the Seller make any warranties or representations with regard to the specific acreage contained within the fenced property lines. Seller is selling the property in an "as is" condition, which includes the location of the fences as they exist. Boundaries shown on the accompanying maps are approximate, based on county parcel data. The maps are not to scale. The accuracy of the maps is not guaranteed. Prospective buyers are encouraged to verify fence lines, deeded property lines and acreages using a licensed surveyor at their own expense.



Mossy Oak Properties Land and Farms Realty
101 Budleigh Street, Suite F
Manteo, NC 27954
(844) 480-5263
<https://www.mossoakproperties.com/>

