

**Hunter's Paradise — 13 Acres of Prime North Florida  
Land in Madison, FL**  
651 NW Flowers  
Madison, FL 32340

**\$130,000**  
13± Acres  
Madison County



**Hunter's Paradise — 13 Acres of Prime North Florida Land in Madison, FL  
Madison, FL / Madison County**

---

**SUMMARY**

**Address**

651 NW Flowers

**City, State Zip**

Madison, FL 32340

**County**

Madison County

**Type**

Recreational Land

**Latitude / Longitude**

30.530827 / -83.483258

**Acreage**

13

**Price**

\$130,000



## Hunter's Paradise — 13 Acres of Prime North Florida Land in Madison, FL Madison, FL / Madison County

---

### PROPERTY DESCRIPTION

#### Hunter's Paradise - 13 Acres of Prime North Florida Land in Madison, FL

Escape to the quiet woods of Madison County, where 13 acres of pristine Florida land are waiting for your next outdoor adventure. Tucked away off a peaceful country road, this property offers **privacy, wildlife, and endless opportunity** - the perfect mix for hunters, campers, and nature lovers alike.

Deer, turkey, and small game roam freely across this acreage, surrounded by a mix of hardwoods, pines, and open areas ideal for food plots or trails. Whether you're setting up a **hunting camp**, carving out **ATV paths**, or planning your **dream country getaway**, this land gives you the space and freedom to make it your own.

Located just a short drive from downtown Madison, you'll enjoy the peace of rural living without being too far from small-town conveniences.

#### Property Highlights:

- **13 acres** of prime hunting and recreation land
- Beautiful mix of woods and clearings
- Ideal for hunting, camping, or building your weekend retreat
- Easy access via county-maintained road
- Plenty of space for food plots, trails, or future improvements
- Private and peaceful location near Madison, FL

If you've been searching for a **true North Florida hunting property**, this one checks all the boxes - room to roam, abundant wildlife, and that hard-to-find feeling of complete escape.

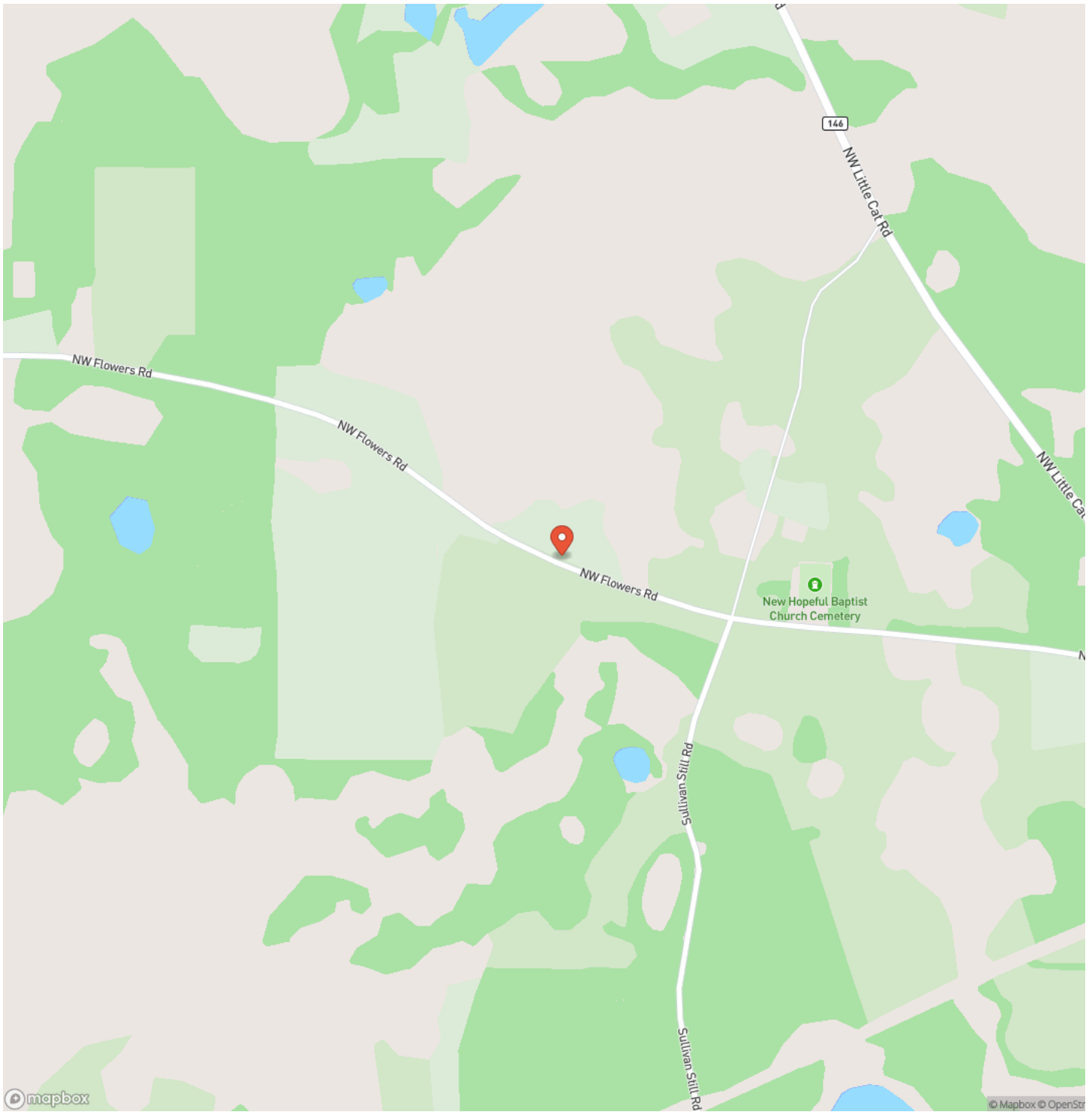
**Location:** Madison, FL

**Acreage:** 13 acres

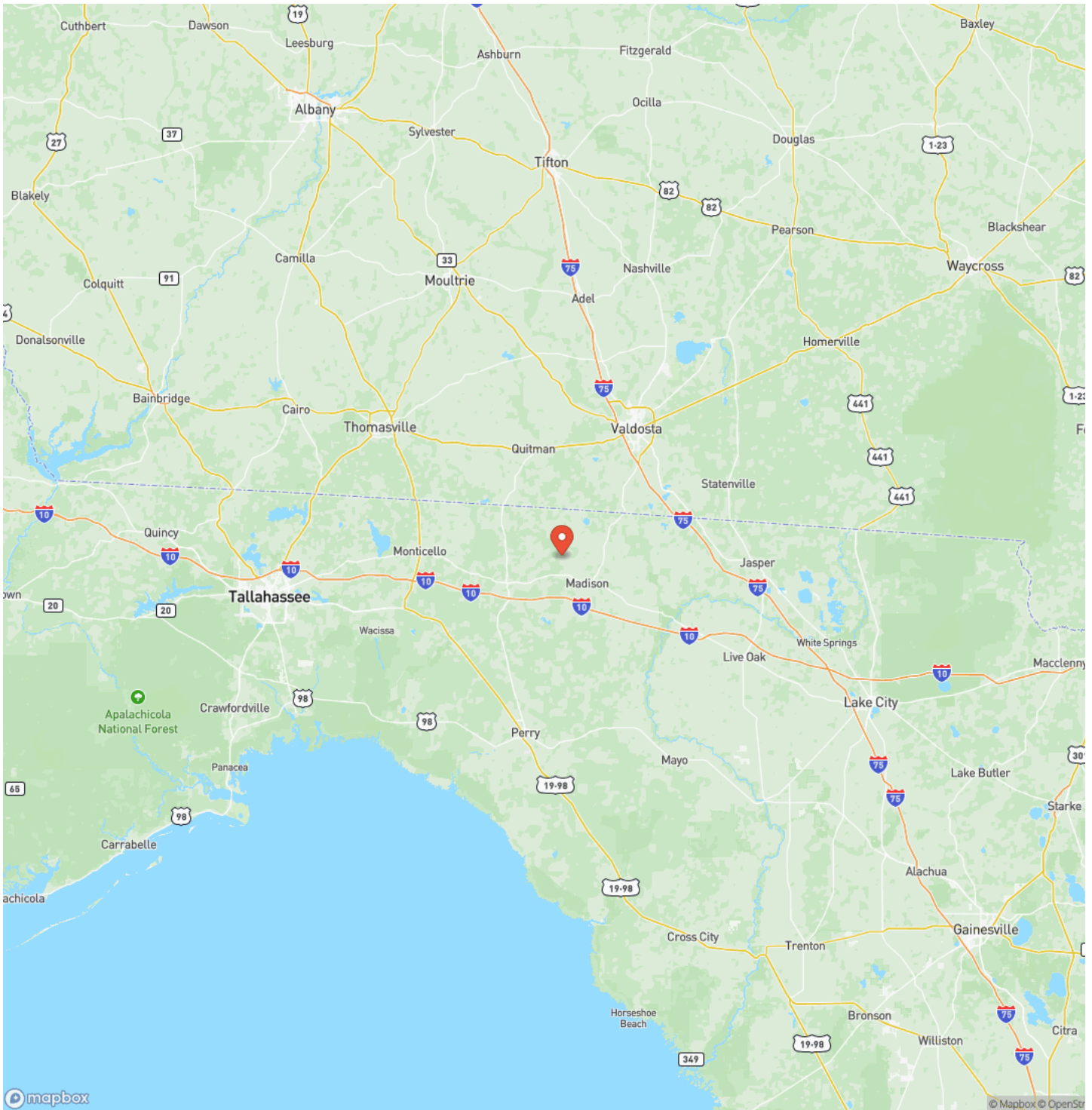
Hunter's Paradise — 13 Acres of Prime North Florida Land in Madison, FL  
Madison, FL / Madison County



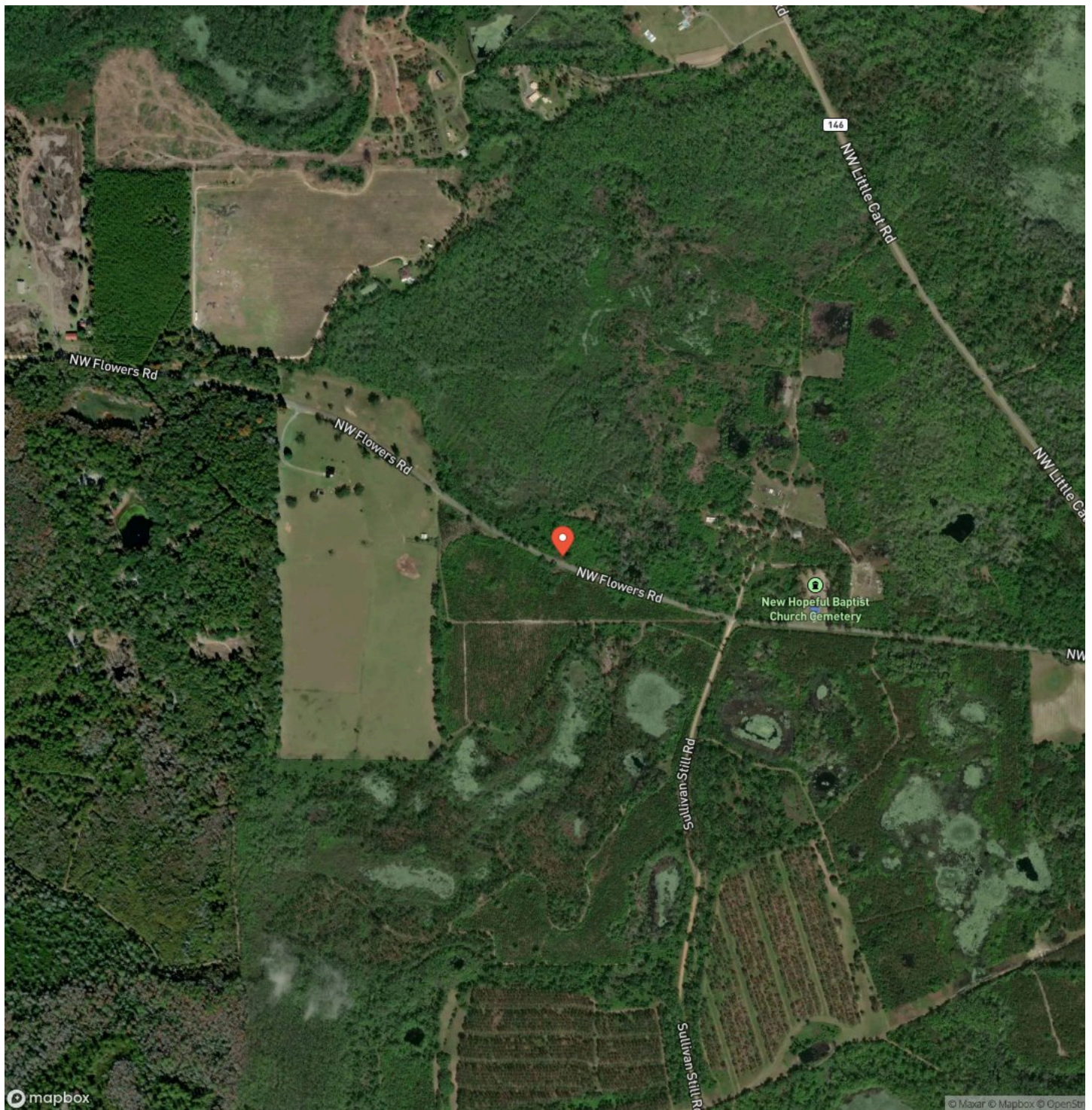
## Locator Map



# Locator Map



## Satellite Map







## **DISCLAIMERS**

Information in this brochure is provided solely for information purposes and does not constitute an offer to sell or advertise real estate outside the states in which broker or agent licensed. The information presented has been obtained from sources deemed to be reliable, but is not guaranteed or warranted by the agent, broker, or the sellers of these properties. This offering is subject to errors, omissions, prior sale, price change, correction or withdrawal from the market without notice. All references to age, square footage, income, expenses, acreage, carrying capacity, and land classification, etc. are approximate. Prospective buyers are chargeable with and expected to conduct their own independent investigation of the information and the property and to rely only on those results. Sellers reserve the right to accept or reject any and all offers without liability to any buyer or cooperating broker.

Maps are provided for illustration purposes only, the accuracy is not warranted. Parcels on interactive maps are not adjusted to match aerial backgrounds. This information is for reference purposes only and is not a legal document. Data maps contain errors. The seller and seller's agent are making known to all potential buyers that there may be variations between the location of the existing fence lines and the legal description of the deeded property. Seller and seller's agent make no warranties with regard to the location of the fence lines in relationship to the deeded property lines, nor does the Seller make any warranties or representations with regard to the specific acreage contained within the fenced property lines. Seller is selling the property in an "as is" condition, which includes the location of the fences as they exist. Boundaries shown on the accompanying maps are approximate, based on county parcel data. The maps are not to scale. The accuracy of the maps is not guaranteed. Prospective buyers are encouraged to verify fence lines, deeded property lines and acreages using a licensed surveyor at their own expense.

---

**Benjamin Jones**  
190 SW RANGE AVE  
Madison, FL 32340  
(850) 673-7888  
<https://mossyoakproperties.com/>

---