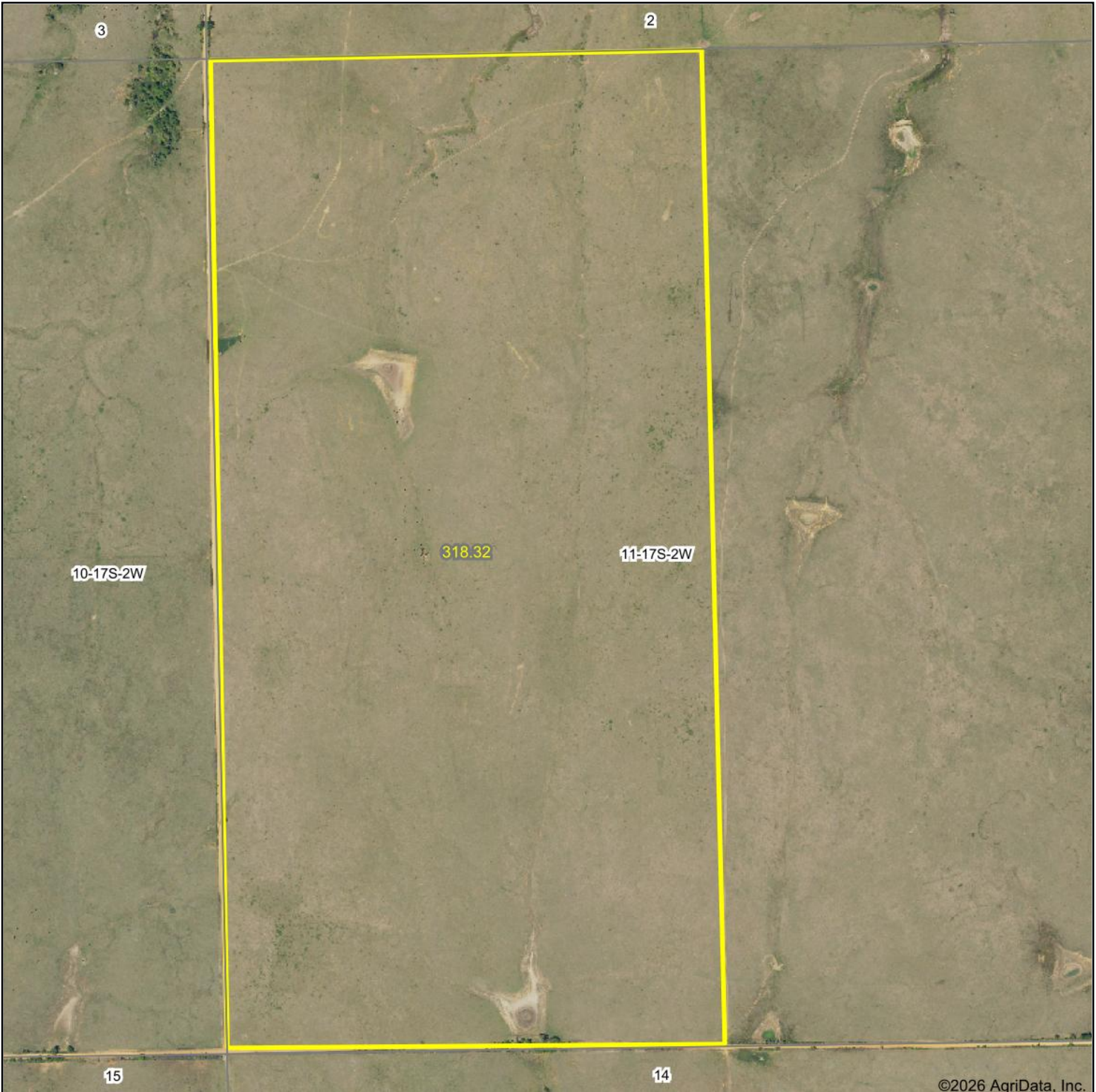
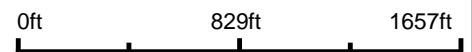


Aerial Map



©2026 AgriData, Inc.

Boundary Center: 38° 35' 14.31, -97° 30' 53.46



11-17S-2W
McPherson County
Kansas



Maps Provided By:
surety
CUSTOMIZED ONLINE MAPPING
© AgriData, Inc. 2025 www.AgriDataInc.com

2/23/2026