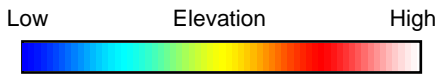
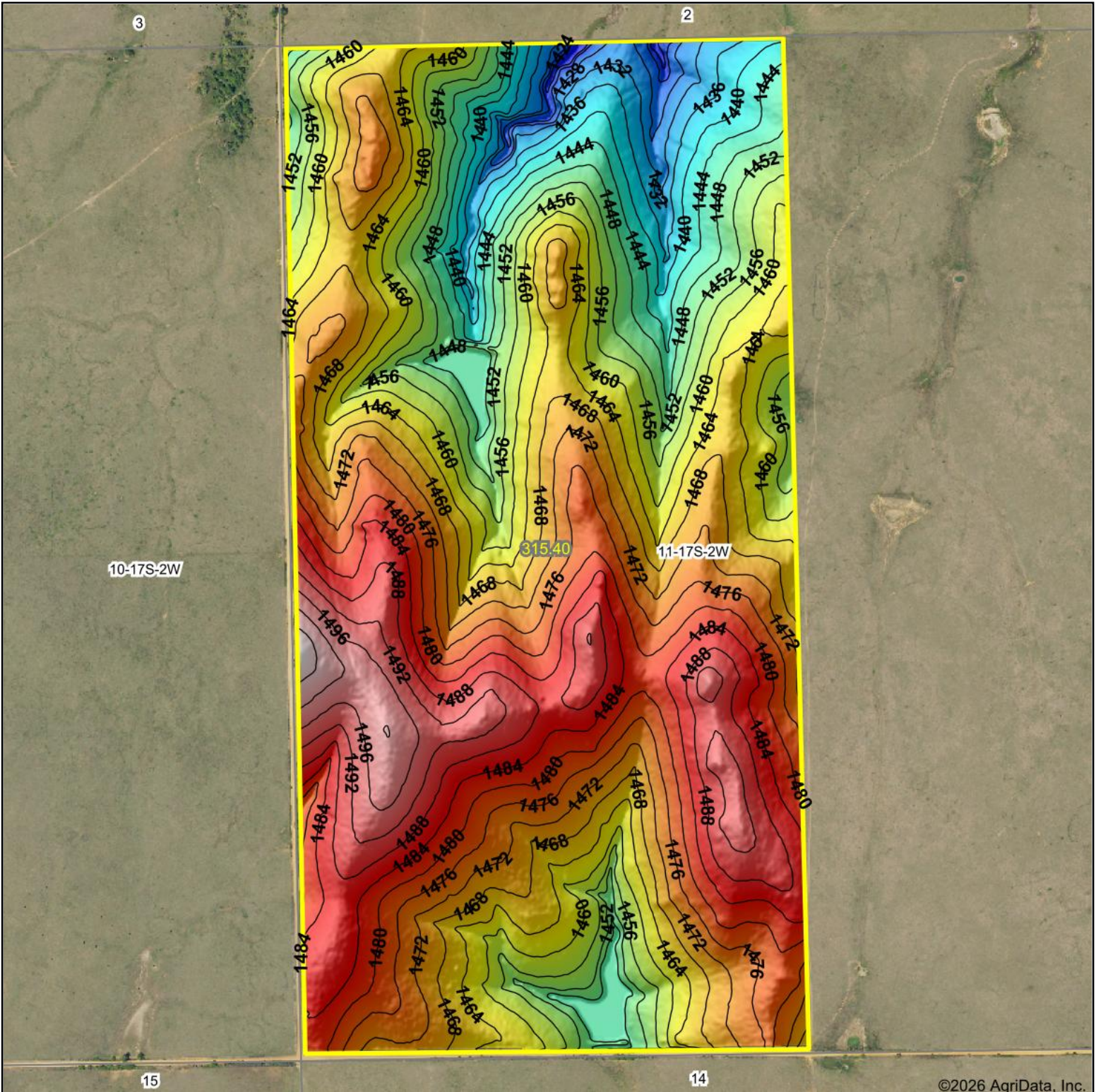


# Topography Hillshade



RED CEDAR LAND CO.

Maps Provided By:



© AgriData, Inc. 2025

www.AgriDataInc.com

Source: USGS 3 meter dem

Interval(ft): 4

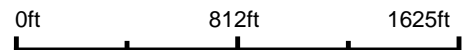
Min: 1,416.0

Max: 1,506.4

Range: 90.4

Average: 1,465.9

Standard Deviation: 16.57 ft



3/11/2026

**11-17S-2W**  
**McPherson County**  
**Kansas**

Boundary Center: 38° 35' 14.33, -97° 30' 53.42