



TX Real Estate Group Farm & Ranch Division

Residential | Farm & Ranch | Commercial



324± Acres De Baca County

YESO, NM

LISTED AT: \$243,042(\$750/ACRE)

We are pleased to present the exclusive listing of this 324± acres of grazing land, located just off of HWY 60 and County Road 1-35 between Vaughn and Fort Sumner, NM.

324± Acres De Baca County | Yeso, NM

Location: Located in De Baca County, New Mexico, between Vaughn and Fort Sumner, this tract offers a great opportunity for grazing, or recreation. The property sits just $\frac{1}{4}$ mile off pavement and is accessed by a well-maintained county road, providing reliable year-round access.

Land: The land features strong native grass, making it well-suited for livestock grazing.

Water: No water infrastructure is currently in place.

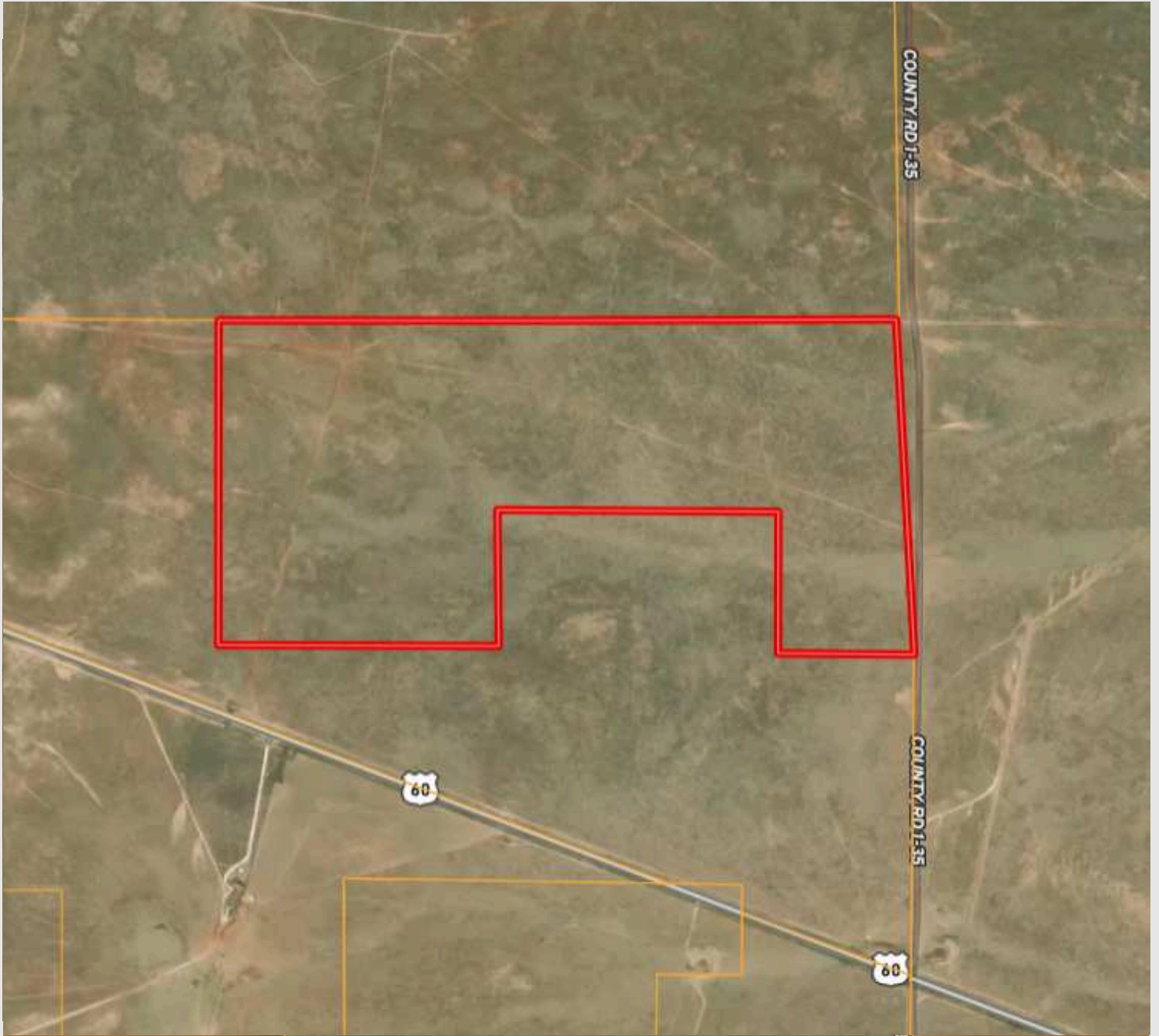
Hunting: Wildlife native to this area includes mule deer, antelope, and native predators, offering potential for recreational use and hunting opportunities.

Minerals: No

Price: \$243,042 or \$750 per acre

Notes: Buyer is encouraged to conduct their own due diligence prior to purchasing. All info listed above is according to the best knowledge of the seller and other relevant sources. The TX Real Estate Group will not be held liable for any information found to be inaccurate during or after closing the buying process. All buyers agents must be identified on first contact and accompany buyers on all showings in order to be given full participation fee. If these requirements are not met, participation fee will be at the sole discretion of the TX Real Estate Group.

324± Acres De Baca County | Yeso, NM



Presented By:

Jude Solileau, Listing Agent

806-801-2030

jude@txrealestategroup.com

10917 Wayne Ave, Lubbock, TX 79424