

Trophy Mountain Ranch
US-270
Stuart, OK 74570

\$3,500,000
711± Acres
Pittsburg County



Trophy Mountain Ranch
Stuart, OK / Pittsburg County

SUMMARY

Address

US-270

City, State Zip

Stuart, OK 74570

County

Pittsburg County

Type

Hunting Land, Recreational Land, Ranches, Undeveloped Land

Latitude / Longitude

34.932296 / -96.051446

Dwelling Square Feet

3800

Bedrooms / Bathrooms

3 / 3

Acreage

711

Price

\$3,500,000

Property Website

<https://legendary.land/property/trophy-mountain-ranch-pittsburg-oklahoma/95266/>



Trophy Mountain Ranch Stuart, OK / Pittsburg County

PROPERTY DESCRIPTION

This 711± acre mountain ranch in Southeast Oklahoma near Stuart offers premier hunting land, fishing, and a turnkey lodge-style barndominium with direct Hwy 270 frontage. Featuring nearly 300 feet of elevation change, the property combines rolling pasture, scenic ridgelines, wooded draws, and multiple water sources including ponds, seasonal creeks, and a recently constructed 8+/- acre lake supporting bass, catfish, and bluegill. With a balance of open pasture, native grasses, and reliable water, the ranch is well-equipped to support a productive cow-calf operation, while the 3,800± sq ft home provides an ideal space for entertaining, recreation, or a private getaway.

Location:

- *Stuart, OK - 3 miles
- *McAlester, OK - 17 miles
- *Tulsa, OK - 100 miles
- *Oklahoma City, OK - 110 miles
- *DFW - 185 miles

Access:

- *Access along Hwy OK-270
- *Over 1/2 a mile of graveled interior ranch roads

Water:

- * 3 seasonal creeks
- * 3 ponds
- * 8 +/- acre lake

Utilities:

- *Rural water
- *Electric
- *Septic System at the home

Climate:

- *Approximately +/- 47.1 inches of annual precipitation

Minerals:

- *Surface Only

Wildlife:

- *Whitetail Deer
- *Wild Turkey
- *Waterfowl
- *Dove
- *Wild Hogs

Fishing:

- *Bass
- *Bluegill
- *Catfish

Terrain:

- *Elevation ranges from 720' to 990'
- *Rolling pasture along Hwy 270 that transitions to more rugged and wooded terrain

Carrying Capacity:



Approximately 5-10 acres per cow/calf pair depending on pasture quality, management, and timber to grass percentage. The Seller has recently been utilizing the wooded areas for grazing in addition to the open pastures below the ridge so we cannot provide an accurate number of AU's this property has historically supported.

Improvements:

- *Barndominium 3,800+/- sqft (per Data Scout Pro) and 20' covered porch with concrete patio
 - *3 Bed 3 Full Baths downstairs plus loft which includes built-in beds and 1 additional full bath.
 - *Loft square footage was not specified in 3rd party sources and is believed to be in addition to the total footage.
 - *Garage Portion...30x50 and includes a 12x18 roll-up door along with a self-closing man door
- *Shop 30x72 with a 16x16 roll-up door & a man door and 25' overhangs with gutters on each side that also extend 24' past the back of the shop and include a 24x30 covered concrete pad.
 - *Wired with 110 & 220 electric and has LED lights inside the shop
- *Loafing Shed 20x100
- *Recently built corrals with load-out

Equipment:

- *NA

General Description:

Trophy Mountain Ranch is a 711± acre recreational and working ranch located in Pittsburg County, Oklahoma, just minutes from Stuart with direct frontage along Hwy 270. Conveniently positioned within easy driving distance of McAlester, Tulsa, Oklahoma City, and the Dallas-Fort Worth metroplex, the property offers both accessibility and privacy in a highly desirable region of Southeast Oklahoma.

This ranch is defined by its exceptional topographic diversity, with elevations ranging from approximately 720 feet to nearly 1,000 feet. The terrain features a dynamic blend of rolling pasture, scenic ridgelines, and heavily wooded draws that create both visual appeal and functional land use. The southern portion of the property offers more gently sloping pastureland ideal for grazing and accessibility, while the northern and eastern portions transition into more rugged terrain that provides outstanding wildlife habitat, natural drainage, and elevated views across the surrounding landscape.

The diverse terrain and layout make this property especially attractive for hunting and recreation. Natural funnels, travel corridors, and bedding areas support strong populations of whitetail deer, wild turkey, waterfowl, dove, and wild hogs. An established internal trail system allows for efficient access throughout the ranch, making it easy to navigate for both recreational use and day-to-day operations. The Seller has utilized a rolling 40+/- acre field just north of the main ridge as a soybean food plot that has drawn mature bucks from miles around.

Water is abundant and well distributed across the property, including three ponds, three seasonal creeks, and an 8+/- acre lake that offers excellent fishing for bass, bluegill, and catfish. These water features enhance both the recreational appeal and the long-term sustainability of the ranch for livestock and wildlife.

With a combination of open pasture, native grasses, and reliable water sources throughout the property, the ranch is well-equipped to support a productive cow-calf operation. The region's favorable rainfall and growing conditions contribute to consistent forage production, making this a strong candidate for both livestock and recreational use.

Improvements are thoughtfully designed to support both comfort and functionality. The 3,800± square foot barndominium offers a lodge-style living experience with an open-concept layout, elevated ceilings, and large windows that provide abundant natural light and views of the surrounding landscape. The home is well-suited for entertaining guests, hosting hunting groups, or serving as a full-time residence or weekend retreat. Attached is a 30x50 garage space that adds practicality and storage.

Additional improvements include a 30x72 shop equipped with 110 and 220 electric, LED lighting, and generous covered workspace, along with a 20x100 loafing shed and recently constructed cattle pens with load-out. These features make the property a turnkey opportunity for a working cattle operation.



Utilities are in place, including rural water, electric, and septic. The area receives approximately 47 inches of annual rainfall, supporting healthy forage production and long-term land sustainability.

Trophy Mountain Ranch offers a rare combination of scale, water, topographic diversity, and high-quality improvements. Whether you are seeking a premier hunting property, a productive cattle ranch, or a private recreational retreat with a comfortable lodge-style home, this property is well-positioned to meet a wide range of uses.

****If you are not already on the Legendary Land Company website, please follow the "Property Website" link.*

****When purchasing a property listed by Legendary Land Company, a Buyer's Broker, if applicable, must be identified on first contact and must be present at the initial showing of the property in order to participate in a real estate commission. If these conditions are not met, compensation, if any, will be at the sole discretion of Legendary Land Company.*

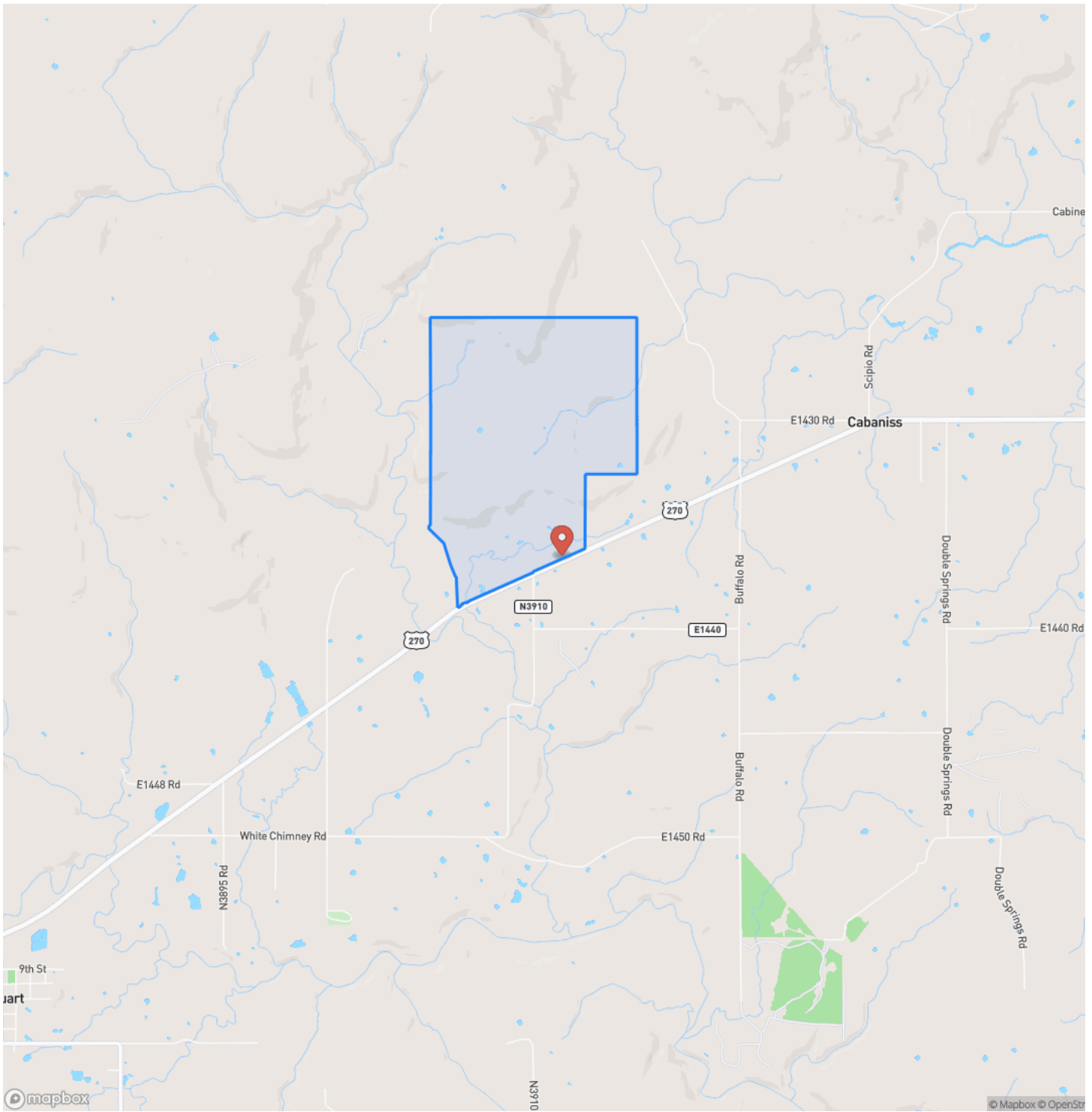
****Information contained in this listing is believed to be reliable but is not guaranteed by the broker or its agents. No representation or warranty is made as to its accuracy or completeness, and all information is subject to errors, omissions, prior sale, price changes, or withdrawal without notice. Buyers are responsible for independently verifying all information and conducting their own due diligence prior to purchase.*



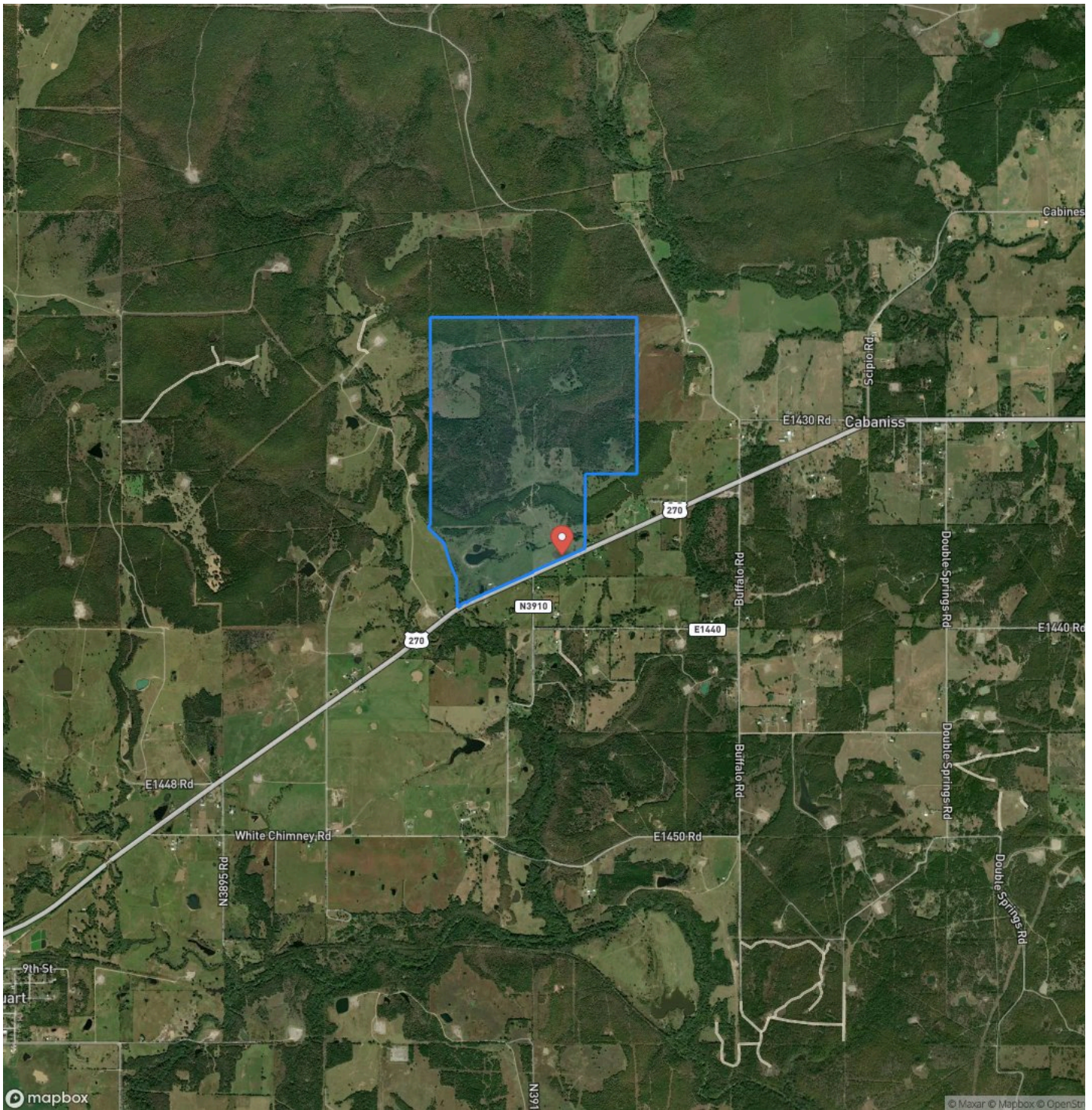
Trophy Mountain Ranch
Stuart, OK / Pittsburg County



Locator Map



Satellite Map



DISCLAIMERS

Information in this brochure is provided solely for information purposes and does not constitute an offer to sell or advertise real estate outside the states in which broker or agent licensed. The information presented has been obtained from sources deemed to be reliable, but is not guaranteed or warranted by the agent, broker, or the sellers of these properties. This offering is subject to errors, omissions, prior sale, price change, correction or withdrawal from the market without notice. All references to age, square footage, income, expenses, acreage, carrying capacity, and land classification, etc. are approximate. Prospective buyers are chargeable with and expected to conduct their own independent investigation of the information and the property and to rely only on those results. Sellers reserve the right to accept or reject any and all offers without liability to any buyer or cooperating broker.

Maps are provided for illustration purposes only, the accuracy is not warranted. Parcels on interactive maps are not adjusted to match aerial backgrounds. This information is for reference purposes only and is not a legal document. Data maps contain errors. The seller and seller's agent are making known to all potential buyers that there may be variations between the location of the existing fence lines and the legal description of the deeded property. Seller and seller's agent make no warranties with regard to the location of the fence lines in relationship to the deeded property lines, nor does the Seller make any warranties or representations with regard to the specific acreage contained within the fenced property lines. Seller is selling the property in an "as is" condition, which includes the location of the fences as they exist. Boundaries shown on the accompanying maps are approximate, based on county parcel data. The maps are not to scale. The accuracy of the maps is not guaranteed. Prospective buyers are encouraged to verify fence lines, deeded property lines and acreages using a licensed surveyor at their own expense.



Legendary Land Co
1021 Regal Rd
Yukon, OK 73099
(405) 206-0914
<https://legendary.land/>

