

10.47 +/- Ac Land for Sale in Wayne County, GA
0 Hwy 341
Odum, GA 31555

\$75,900
10.47± Acres
Wayne County



**10.47 +/- Ac Land for Sale in Wayne County, GA
Odum, GA / Wayne County**

SUMMARY

Address

0 Hwy 341 null

City, State Zip

Odum, GA 31555

County

Wayne County

Type

Recreational Land, Undeveloped Land

Latitude / Longitude

31.673547 / -82.064215

Acreage

10.47

Price

\$75,900



10.47 +/- Ac Land for Sale in Wayne County, GA Odum, GA / Wayne County

PROPERTY DESCRIPTION

10.47 +/- ACRES FOR SALE IN WAYNE COUNTY, GA

Excellent homesite, recreational, or investment tract located in Wayne County, GA on Bennett Mill Road. This 10.47 +/- acre property offers paved road frontage, power available at the road, and conveniently located near several surrounding communities.

Whether you're looking to build a home, establish a private getaway, or invest in land in a growing area, this tract offers a great opportunity. The property's setting and convenient location make it well suited for a variety of uses.

Property Features:

- 10.47 +/- Acres in Wayne County, GA
- Located on Hwy 341
- Paved Road Frontage
- Power Available at the Road
- Excellent Homesite Opportunity
- Recreational or Investment Potential
- Convenient Access to Nearby Towns

Location:

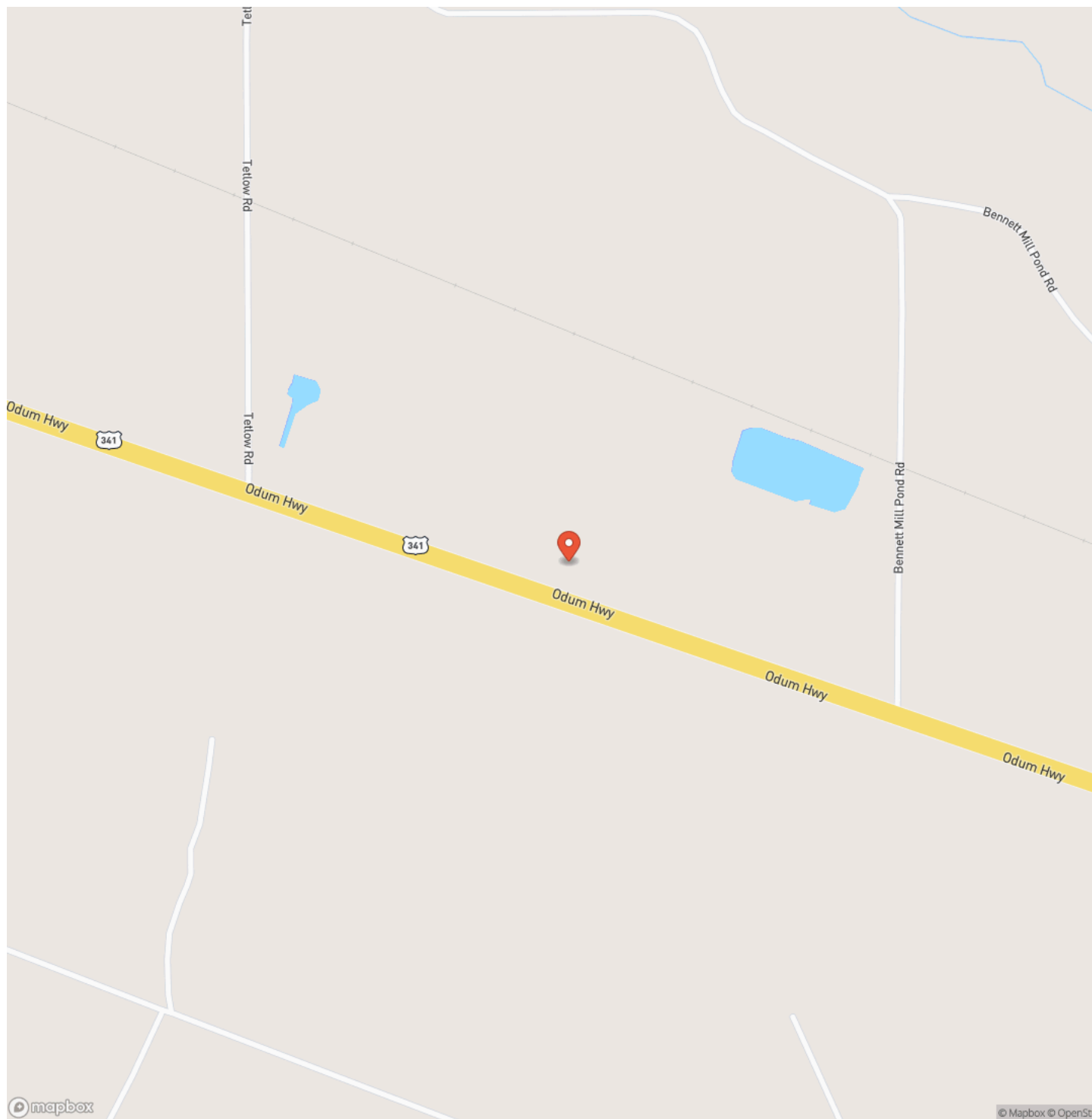
- 16 Minutes to Jesup, GA
- 22 Minutes to Baxley, GA
- 42 Minutes to Blackshear, GA
- 41 Minutes to Alma, GA
- 48 Minutes to Nahunta, GA
- 1 Hour 4 Minutes to Brunswick, GA
- 1 Hour 23 Minutes to Kingsland, GA

Contact Brogan Napier (Cell: [904-814-9737](tel:904-814-9737)) with Mossy Oak Properties for more information or to schedule a showing.

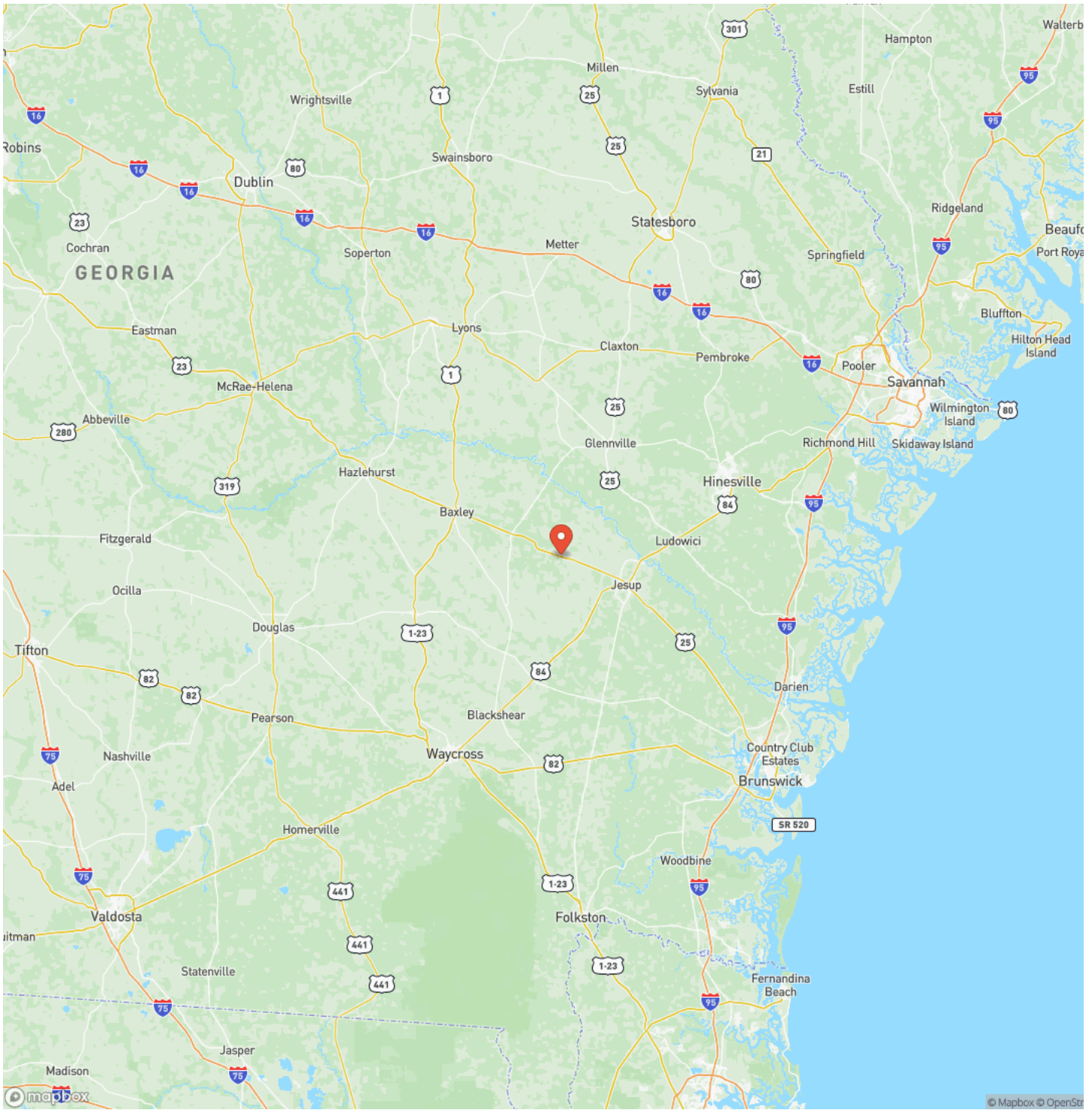
10.47 +/- Ac Land for Sale in Wayne County, GA
Odum, GA / Wayne County



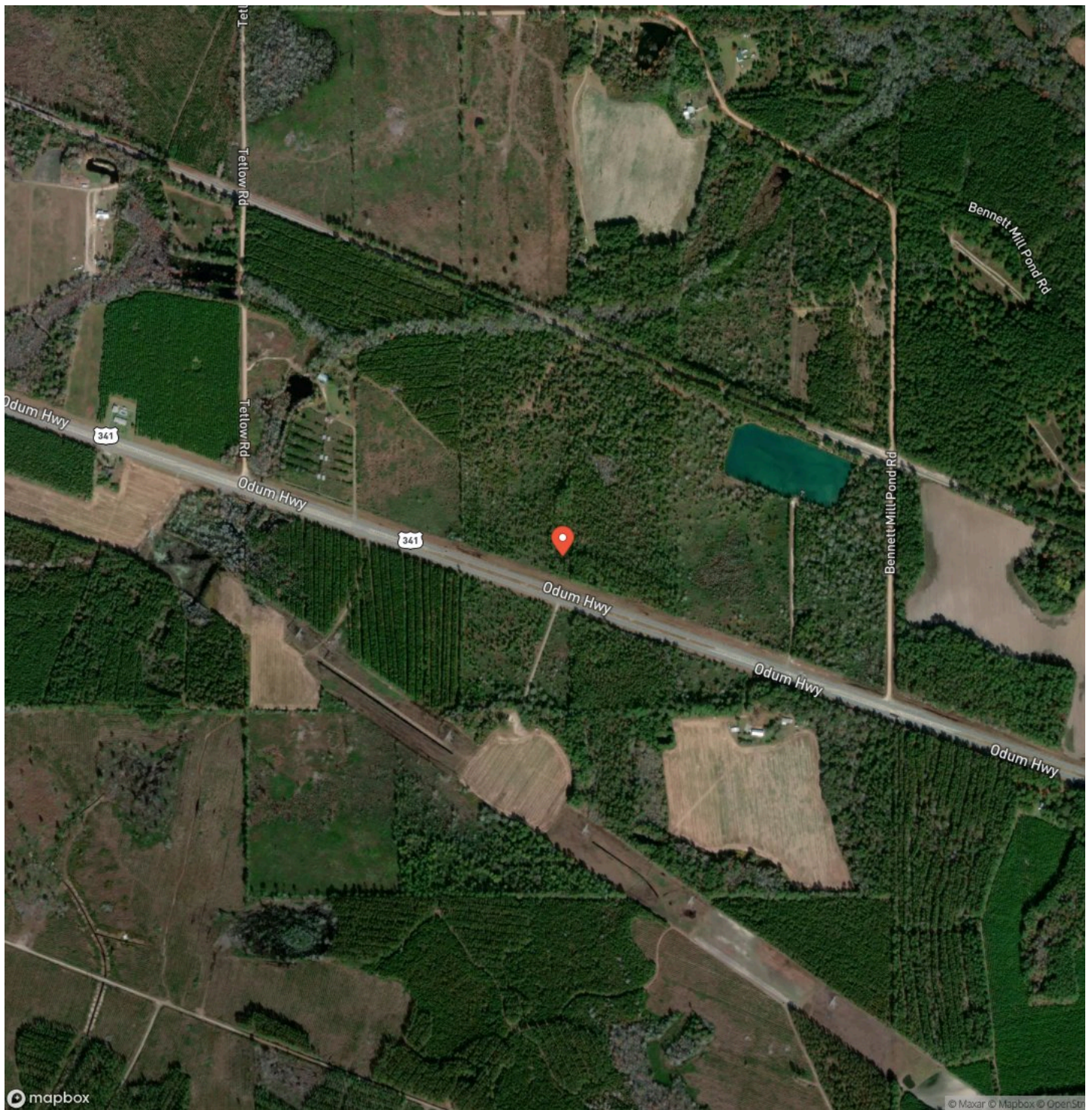
Locator Map



Locator Map



Satellite Map



DISCLAIMERS

Information in this brochure is provided solely for information purposes and does not constitute an offer to sell or advertise real estate outside the states in which broker or agent licensed. The information presented has been obtained from sources deemed to be reliable, but is not guaranteed or warranted by the agent, broker, or the sellers of these properties. This offering is subject to errors, omissions, prior sale, price change, correction or withdrawal from the market without notice. All references to age, square footage, income, expenses, acreage, carrying capacity, and land classification, etc. are approximate. Prospective buyers are chargeable with and expected to conduct their own independent investigation of the information and the property and to rely only on those results. Sellers reserve the right to accept or reject any and all offers without liability to any buyer or cooperating broker.

Maps are provided for illustration purposes only, the accuracy is not warranted. Parcels on interactive maps are not adjusted to match aerial backgrounds. This information is for reference purposes only and is not a legal document. Data maps contain errors. The seller and seller's agent are making known to all potential buyers that there may be variations between the location of the existing fence lines and the legal description of the deeded property. Seller and seller's agent make no warranties with regard to the location of the fence lines in relationship to the deeded property lines, nor does the Seller make any warranties or representations with regard to the specific acreage contained within the fenced property lines. Seller is selling the property in an "as is" condition, which includes the location of the fences as they exist. Boundaries shown on the accompanying maps are approximate, based on county parcel data. The maps are not to scale. The accuracy of the maps is not guaranteed. Prospective buyers are encouraged to verify fence lines, deeded property lines and acreages using a licensed surveyor at their own expense.

Mossy Oak Properties Coastal Land and Real Estate
309 Arnow Court
Saint Marys, GA 31558
(912) 674-2700
<https://mossyoakproperties.com/>

