

.61 Acres Camden County, GA
0 Tar Flower Trl
Waverly, GA 31565

\$30,000
0.610± Acres
Camden County



.61 Acres Camden County, GA
Waverly, GA / Camden County

SUMMARY

Address

0 Tar Flower Trl

City, State Zip

Waverly, GA 31565

County

Camden County

Type

Lot

Latitude / Longitude

31.065304 / -81.57638

Acreage

0.610

Price

\$30,000

Property Website

<https://www.mossyoakproperties.com/property/61-acres-camden-county-ga-camden-georgia/86711/>



.61 Acres Camden County, GA
Waverly, GA / Camden County

PROPERTY DESCRIPTION

Buildable Homesite – 0.61 Acres in Creek Side Oaks, White Oak, GA

This 0.61-acre lot is located in the private, gated community of Creek Side Oaks in White Oak, GA. Tucked away in the peaceful countryside of Camden County, this parcel offers the perfect opportunity to build your dream home or a relaxing weekend getaway. With paved road access and a \$300/year HOA, Creek Side Oaks provides security, privacy for residents.

Whether you're looking for a great homestead location or a smart investment in a growing area, this tract offers the charm of rural Georgia living.

Property Features:

- 0.61 Acres in a Gated Community
- Paved Road Access on Tar Flower Trail
- Peaceful Country Setting
- Ideal for a Homesite

Conveniently Located:

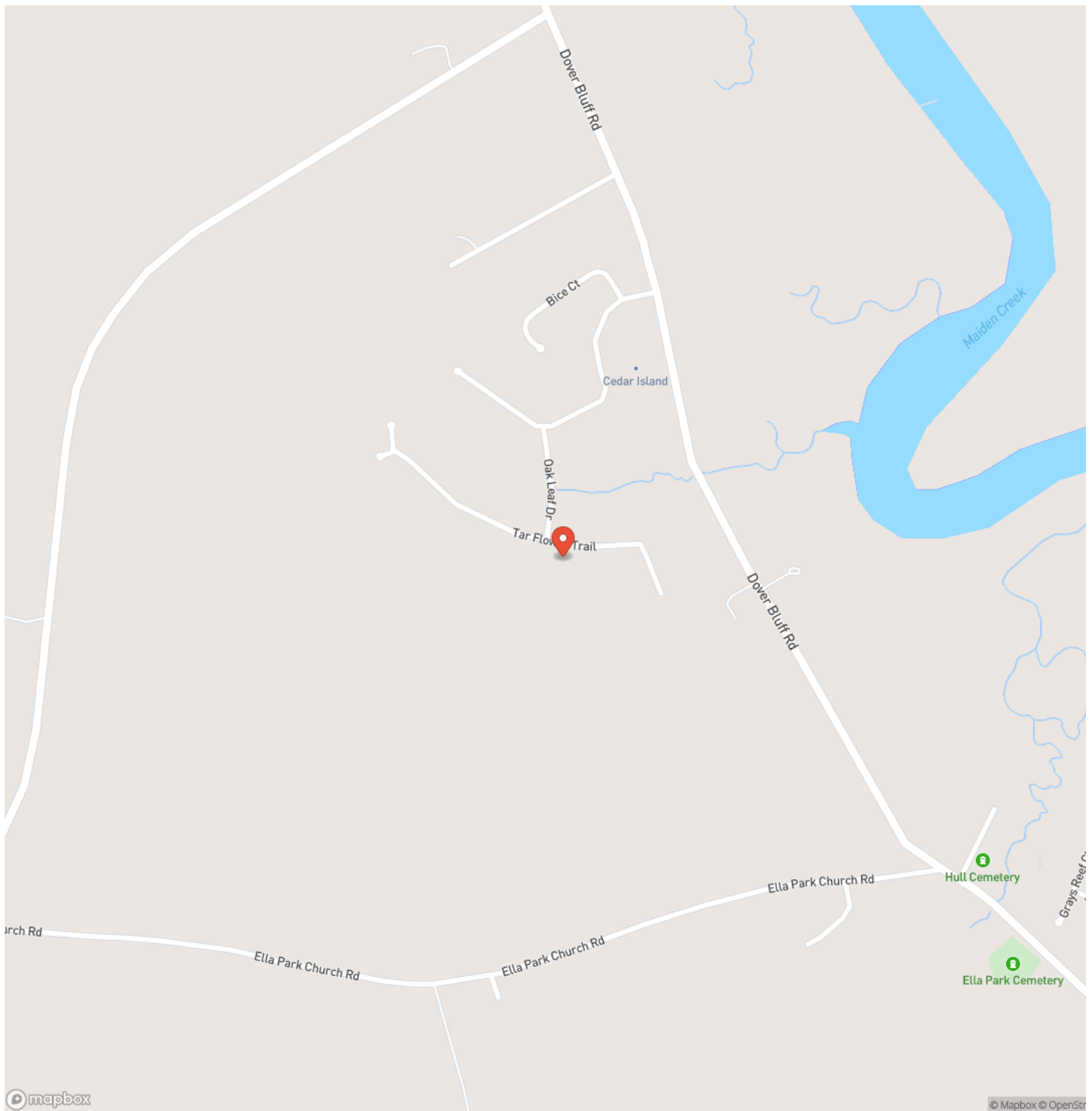
- 15 minutes to Waverly, GA
- 6 minutes to I-95
- 30 minutes to Kingsland or Brunswick, GA
- 55 minutes to Jacksonville, FL

Contact **Brogan Napier** (Cell: [904-814-9737](tel:904-814-9737)) with **Mossy Oak Properties** for more information on this property or others like it.

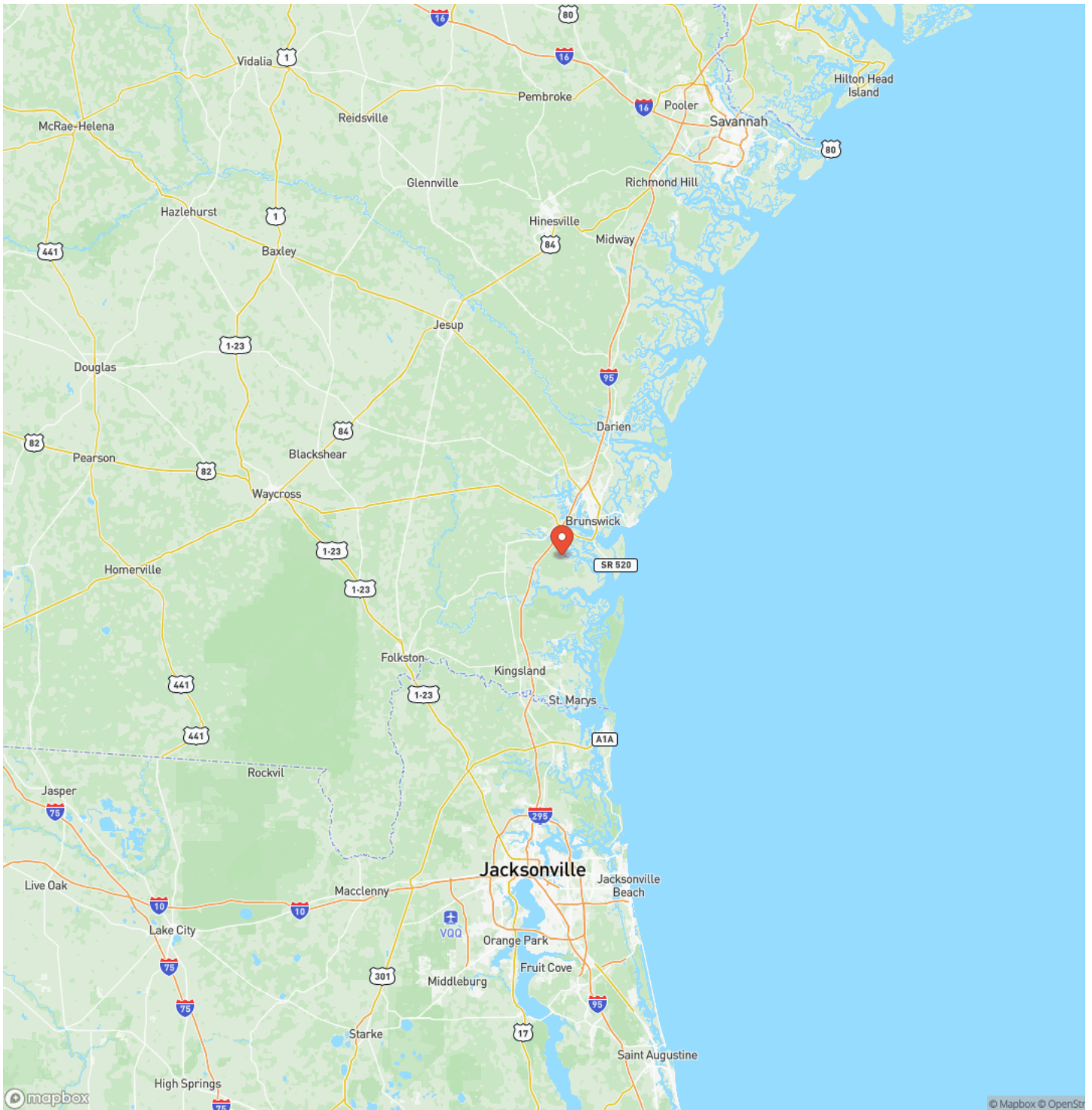
.61 Acres Camden County, GA
Waverly, GA / Camden County



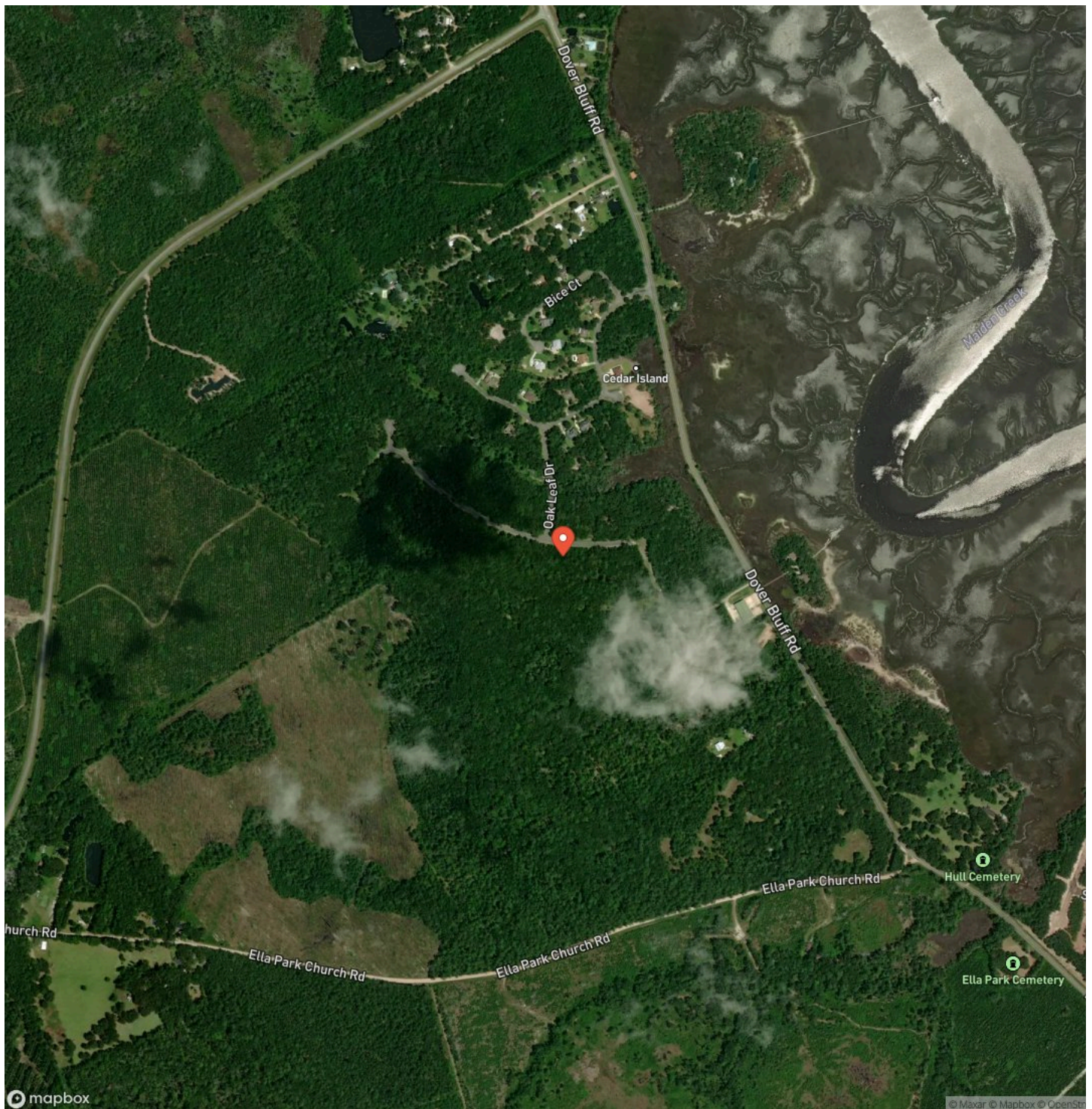
Locator Map



Locator Map



Satellite Map



.61 Acres Camden County, GA
Waverly, GA / Camden County

LISTING REPRESENTATIVE

For more information contact:



Representative

Brogan Napier

Mobile

(904) 814-9737

Office

(912) 674-2700

Email

bnapier@mossyoakproperties.com

Address

309 Arnov Court

City / State / Zip

NOTES

This image shows a single sheet of white paper with horizontal ruling lines. The lines are evenly spaced and run across the width of the page. There are no margins or other markings visible.

This image shows a full page of blank white paper with horizontal ruling lines. The lines are evenly spaced and run across the width of the page, providing a template for writing or drawing. There are no margins, text, or other markings present.



MossyOakProperties.com

DISCLAIMERS

Information in this brochure is provided solely for information purposes and does not constitute an offer to sell or advertise real estate outside the states in which broker or agent licensed. The information presented has been obtained from sources deemed to be reliable, but is not guaranteed or warranted by the agent, broker, or the sellers of these properties. This offering is subject to errors, omissions, prior sale, price change, correction or withdrawal from the market without notice. All references to age, square footage, income, expenses, acreage, carrying capacity, and land classification, etc. are approximate. Prospective buyers are chargeable with and expected to conduct their own independent investigation of the information and the property and to rely only on those results. Sellers reserve the right to accept or reject any and all offers without liability to any buyer or cooperating broker.

Maps are provided for illustration purposes only, the accuracy is not warranted. Parcels on interactive maps are not adjusted to match aerial backgrounds. This information is for reference purposes only and is not a legal document. Data maps contain errors. The seller and seller's agent are making known to all potential buyers that there may be variations between the location of the existing fence lines and the legal description of the deeded property. Seller and seller's agent make no warranties with regard to the location of the fence lines in relationship to the deeded property lines, nor does the Seller make any warranties or representations with regard to the specific acreage contained within the fenced property lines. Seller is selling the property in an "as is" condition, which includes the location of the fences as they exist. Boundaries shown on the accompanying maps are approximate, based on county parcel data. The maps are not to scale. The accuracy of the maps is not guaranteed. Prospective buyers are encouraged to verify fence lines, deeded property lines and acreages using a licensed surveyor at their own expense.

Mossy Oak Properties Coastal Land and Real Estate
309 Arnow Court
Saint Marys, GA 31558
(912) 674-2700
MossyOakProperties.com

