

**31.81 +/- Acres Recreational Land for Sale in Ware
County, GA**
0 S Farms Edge Rd
Manor, GA 31550

\$117,000
31.81± Acres
Ware County



**31.81 +/- Acres Recreational Land for Sale in Ware County, GA
Manor, GA / Ware County**

SUMMARY

Address

0 S Farms Edge Rd

City, State Zip

Manor, GA 31550

County

Ware County

Type

Recreational Land, Undeveloped Land, Timberland

Latitude / Longitude

31.182047 / -82.589137

Taxes (Annually)

\$550

HOA (Annually)

\$500

Acreage

31.81

Price

\$117,000



31.81 +/- Acres Recreational Land for Sale in Ware County, GA Manor, GA / Ware County

PROPERTY DESCRIPTION

31.81 +/- ACRES RECREATIONAL LAND FOR SALE IN WARE COUNTY, GA

Excellent recreational, hunting, and homesite tract located in the Millwood Plantation community in Ware County, GA. This 31.81 +/- acre property features approximately 19.5 +/- acres of planted pine, providing excellent wildlife habitat. With dirt road frontage and located just 0.28 miles from a paved road, this tract offers convenient access while maintaining privacy and seclusion.

Whether you're looking to build your dream home, establish a weekend getaway, or create a private hunting camp, this property offers the perfect setting. Deer, turkey, and other wildlife are in the area, making it an excellent recreational investment.

Property Features:

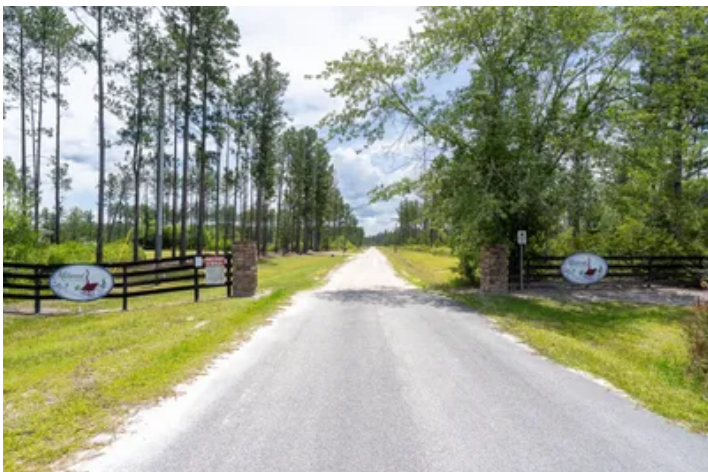
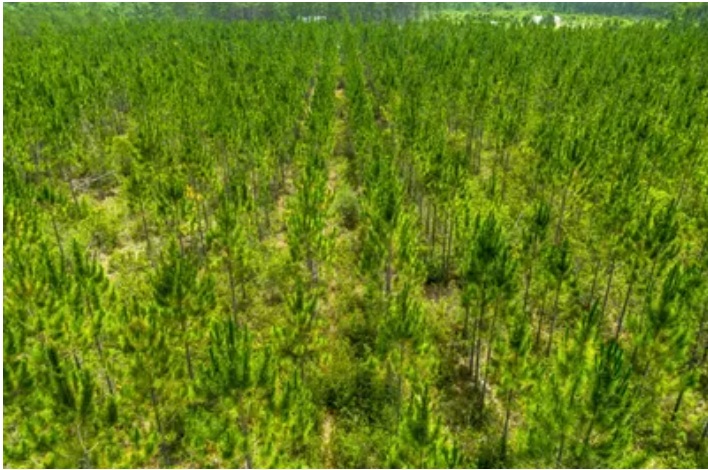
- 31.81 +/- Acres in Ware County, GA
- Located in Millwood Plantation
- Approximately 19.5 +/- Acres of Planted Pine
- Power Available at Road
- Great Homesite Opportunity
- Ideal Weekend Getaway or Hunting Camp
- Dirt Road Frontage
- Only 0.28 Miles from Paved Road Access
- Private and Peaceful Setting

Location:

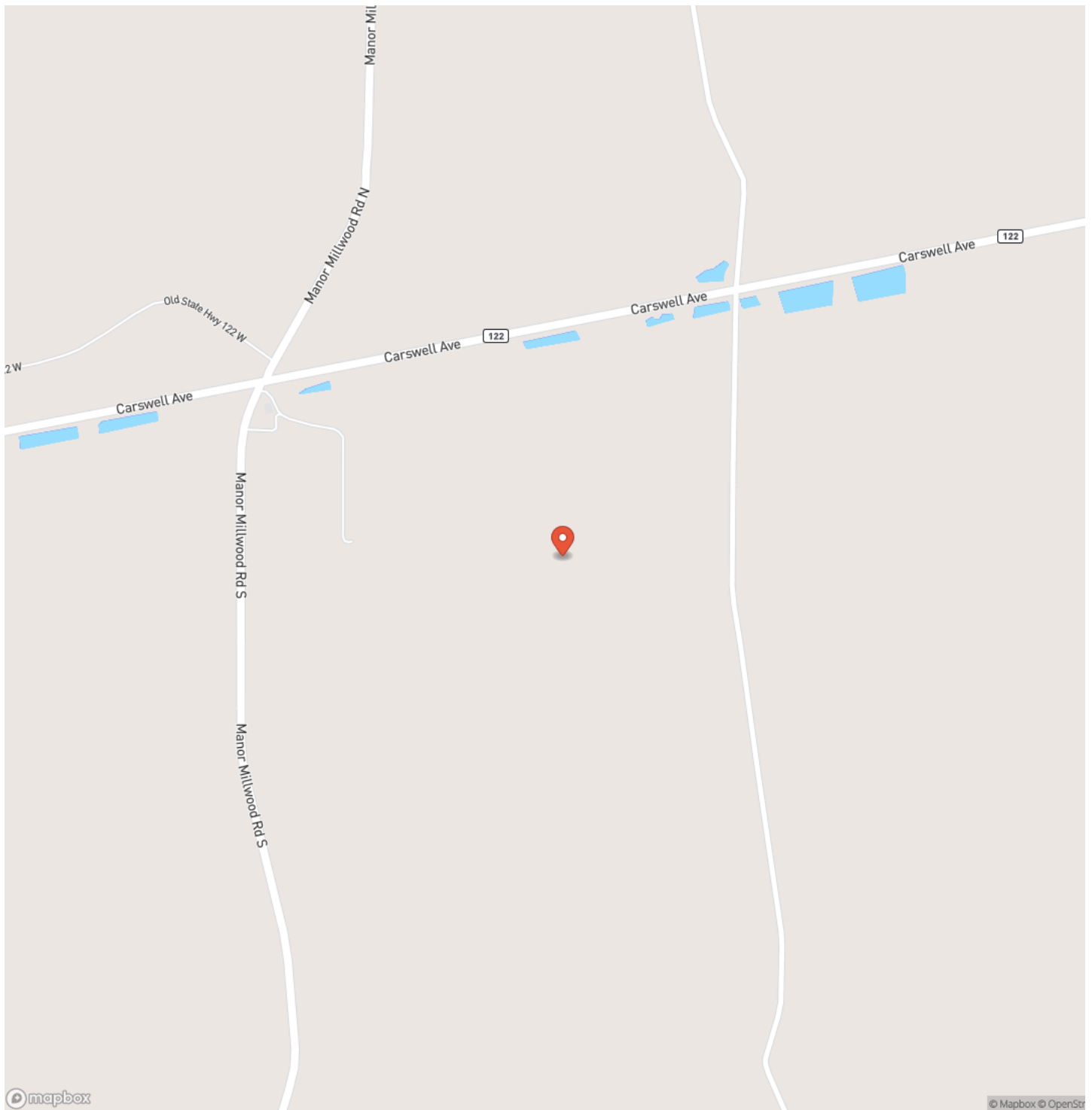
- 18 Minutes to Waycross, GA
- 31 Minutes to Blackshear, GA
- 42 Minutes to Douglas, GA
- 53 Minutes to Folkston, GA
- 58 Minutes to Valdosta, GA
- 1 Hour 14 Minutes to Kingsland, GA
- 1 Hour 45 Minutes to Jacksonville, FL

Contact Brogan Napier (Cell: [904-814-9737](tel:904-814-9737)) with Mossy Oak Properties for more information or to schedule a showing.

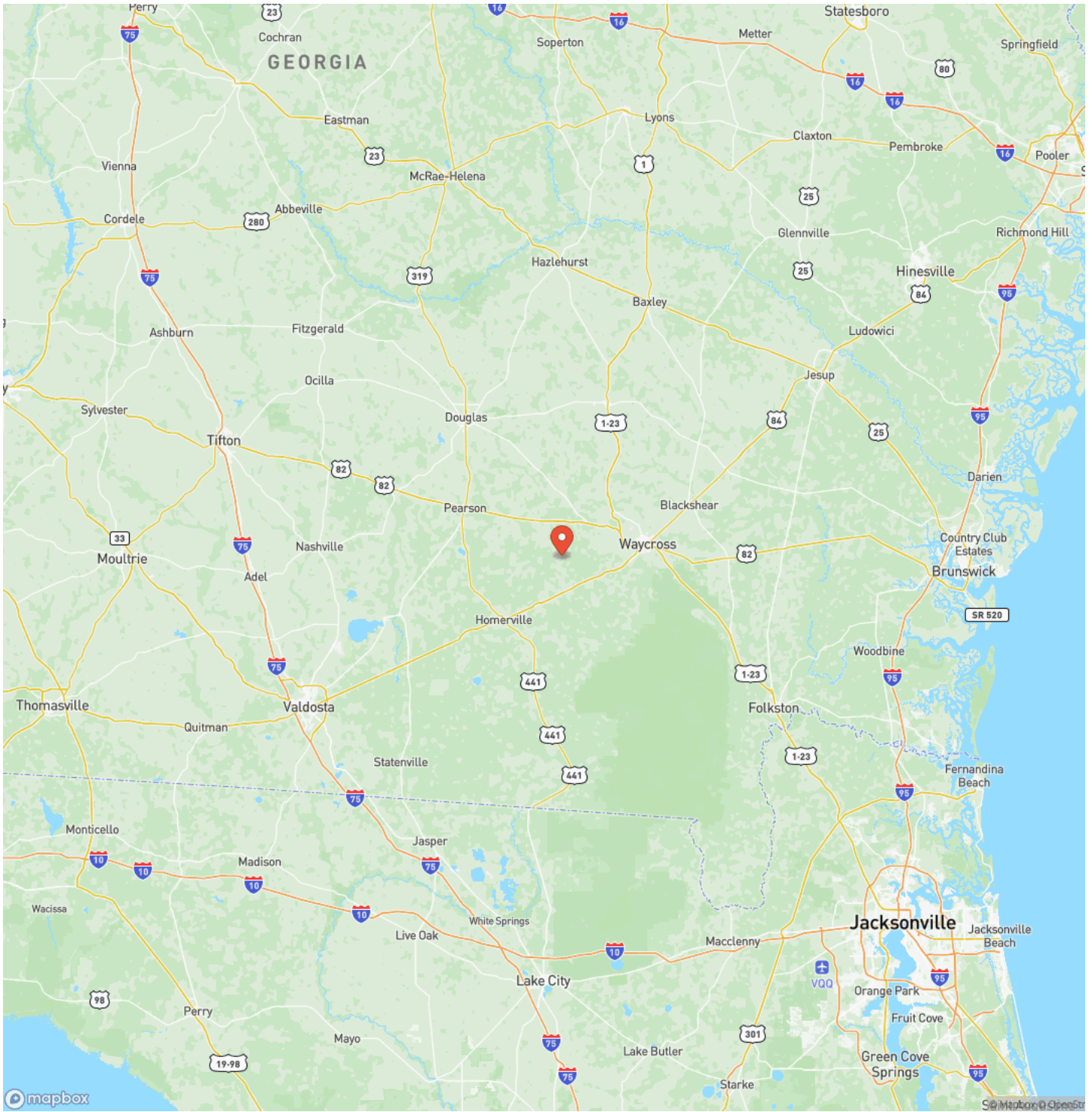
31.81 +/- Acres Recreational Land for Sale in Ware County, GA
Manor, GA / Ware County



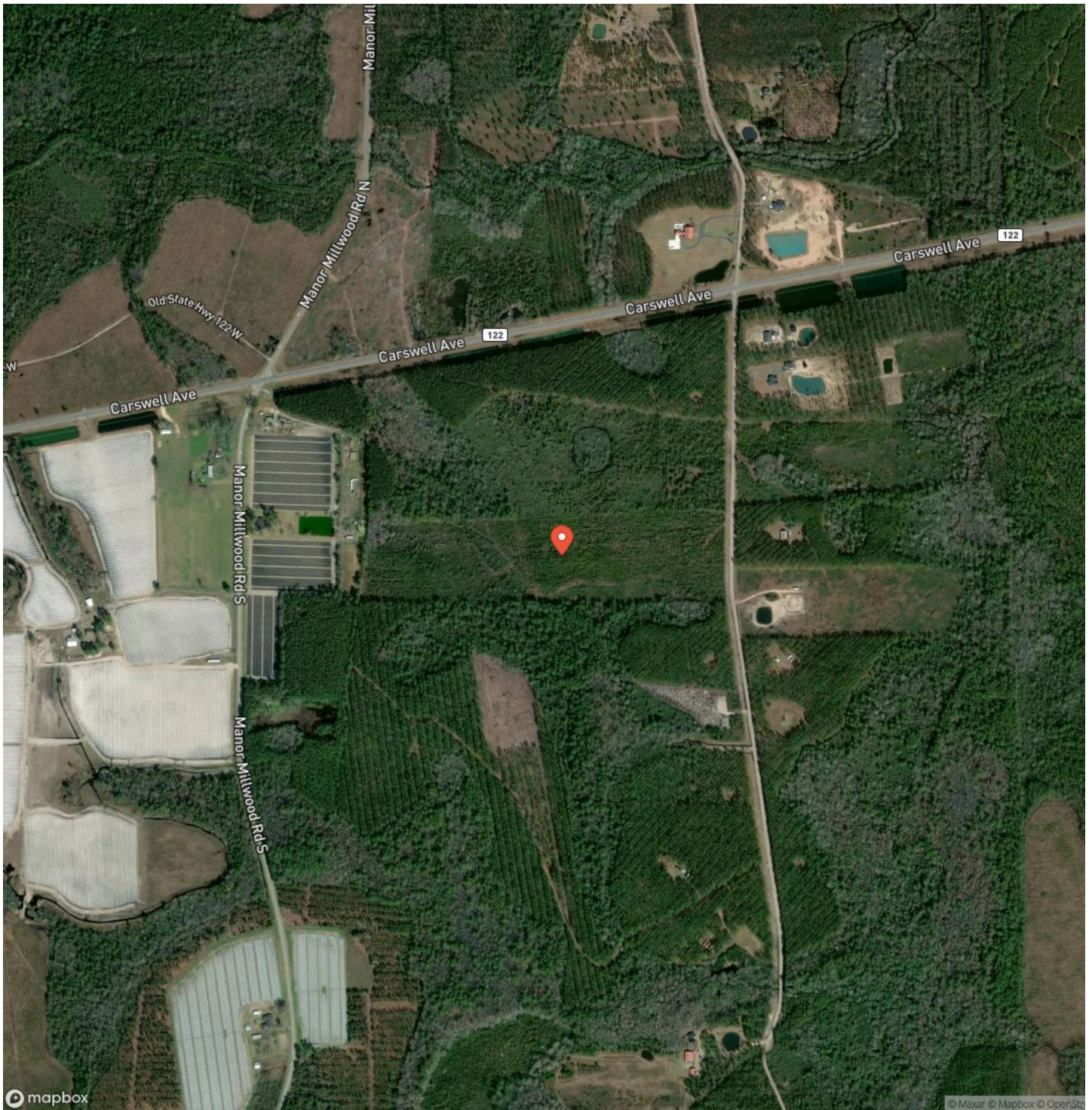
Locator Map



Locator Map



Satellite Map



DISCLAIMERS

Information in this brochure is provided solely for information purposes and does not constitute an offer to sell or advertise real estate outside the states in which broker or agent licensed. The information presented has been obtained from sources deemed to be reliable, but is not guaranteed or warranted by the agent, broker, or the sellers of these properties. This offering is subject to errors, omissions, prior sale, price change, correction or withdrawal from the market without notice. All references to age, square footage, income, expenses, acreage, carrying capacity, and land classification, etc. are approximate. Prospective buyers are chargeable with and expected to conduct their own independent investigation of the information and the property and to rely only on those results. Sellers reserve the right to accept or reject any and all offers without liability to any buyer or cooperating broker.

Maps are provided for illustration purposes only, the accuracy is not warranted. Parcels on interactive maps are not adjusted to match aerial backgrounds. This information is for reference purposes only and is not a legal document. Data maps contain errors. The seller and seller's agent are making known to all potential buyers that there may be variations between the location of the existing fence lines and the legal description of the deeded property. Seller and seller's agent make no warranties with regard to the location of the fence lines in relationship to the deeded property lines, nor does the Seller make any warranties or representations with regard to the specific acreage contained within the fenced property lines. Seller is selling the property in an "as is" condition, which includes the location of the fences as they exist. Boundaries shown on the accompanying maps are approximate, based on county parcel data. The maps are not to scale. The accuracy of the maps is not guaranteed. Prospective buyers are encouraged to verify fence lines, deeded property lines and acreages using a licensed surveyor at their own expense.

Mossy Oak Properties Coastal Land and Real Estate
309 Arnow Court
Saint Marys, GA 31558
(912) 674-2700
<https://mossyoakproperties.com/>

