

25.10 +/- Ac Land for Sale in Camden County, GA
0 Owens Ferry Rd
White Oak, GA 31568

\$199,900
25.100± Acres
Camden County



25.10 +/- Ac Land for Sale in Camden County, GA
White Oak, GA / Camden County

SUMMARY

Address

0 Owens Ferry Rd

City, State Zip

White Oak, GA 31568

County

Camden County

Type

Recreational Land, Undeveloped Land, Timberland

Latitude / Longitude

30.993774 / -81.802686

Acreage

25.100

Price

\$199,900

Property Website

<https://www.mossoakproperties.com/property/25-10-ac-land-for-sale-in-camden-county-ga-camden-georgia/101843/>



25.10 +/- Ac Land for Sale in Camden County, GA White Oak, GA / Camden County

PROPERTY DESCRIPTION

25.10 +/- Acres in Camden County, GA

This 25.10 +/- acre tract in Camden County, GA offers an excellent opportunity for a homesite, recreational retreat, or long-term investment. With county-maintained dirt road frontage and power available at the road, the property is well-positioned for immediate use or future development.

The layout provides plenty of usable space for building, enjoying the outdoors, or creating a private getaway, all in a quiet setting with convenient access to surrounding areas.

Property Features:

- 25.10 +/- Acres in Camden County, GA
- County Maintained Dirt Road Frontage
- Power at the Road
- Ideal for a Homesite
- Excellent Recreational Opportunity

Location:

- 10 Minutes to Woodbine, GA
- 23 Minutes to Kingsland, GA
- 25 Minutes to Folkston, GA
- 35 Minutes to Brunswick, GA
- 54 Minutes to Jacksonville, FL

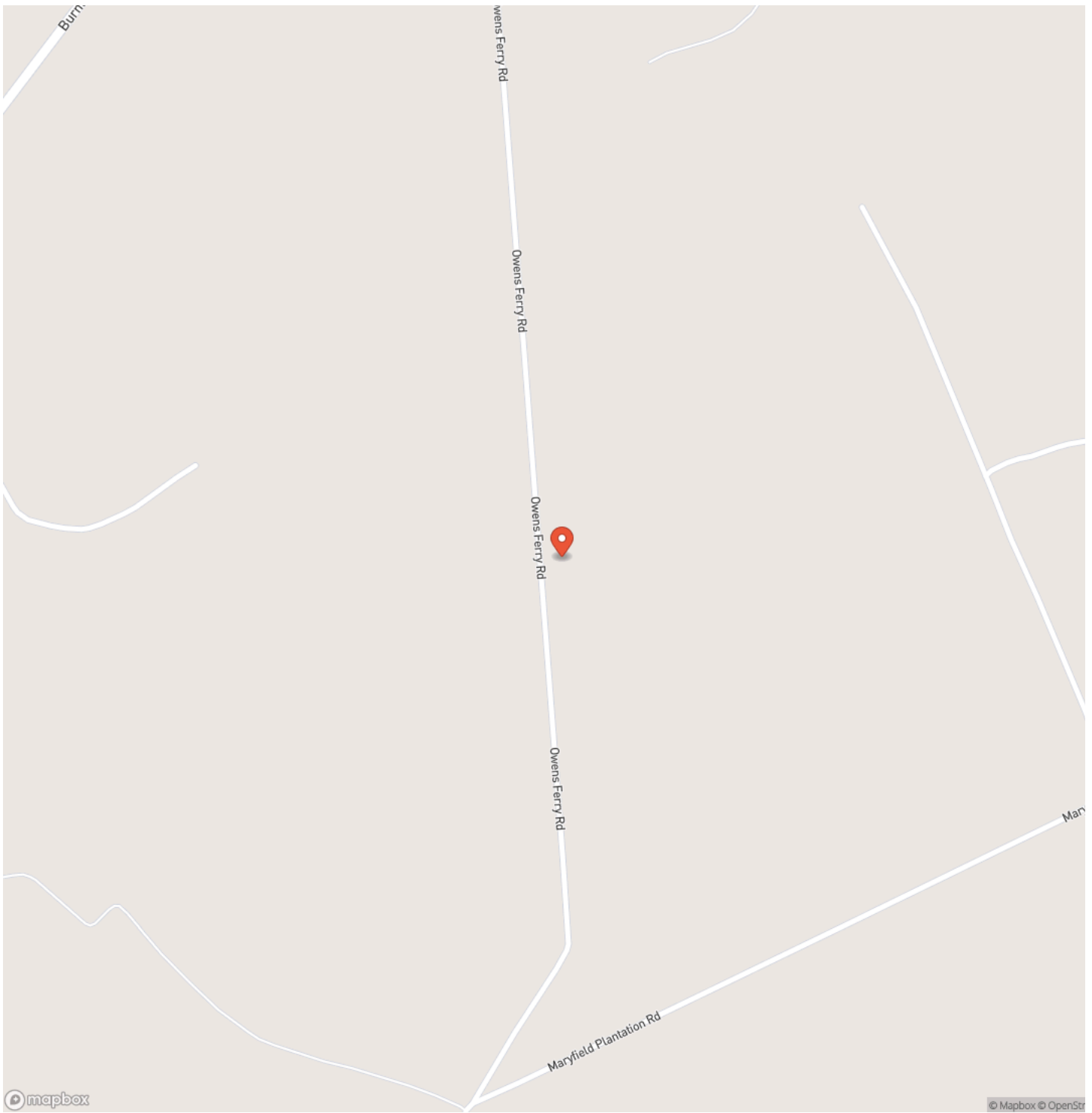
Owner holds a GA Real Estate license

Contact Brogan Napier (Cell: [904-814-9737](tel:904-814-9737)) with Mossy Oak Properties for more information on this property or others like it.

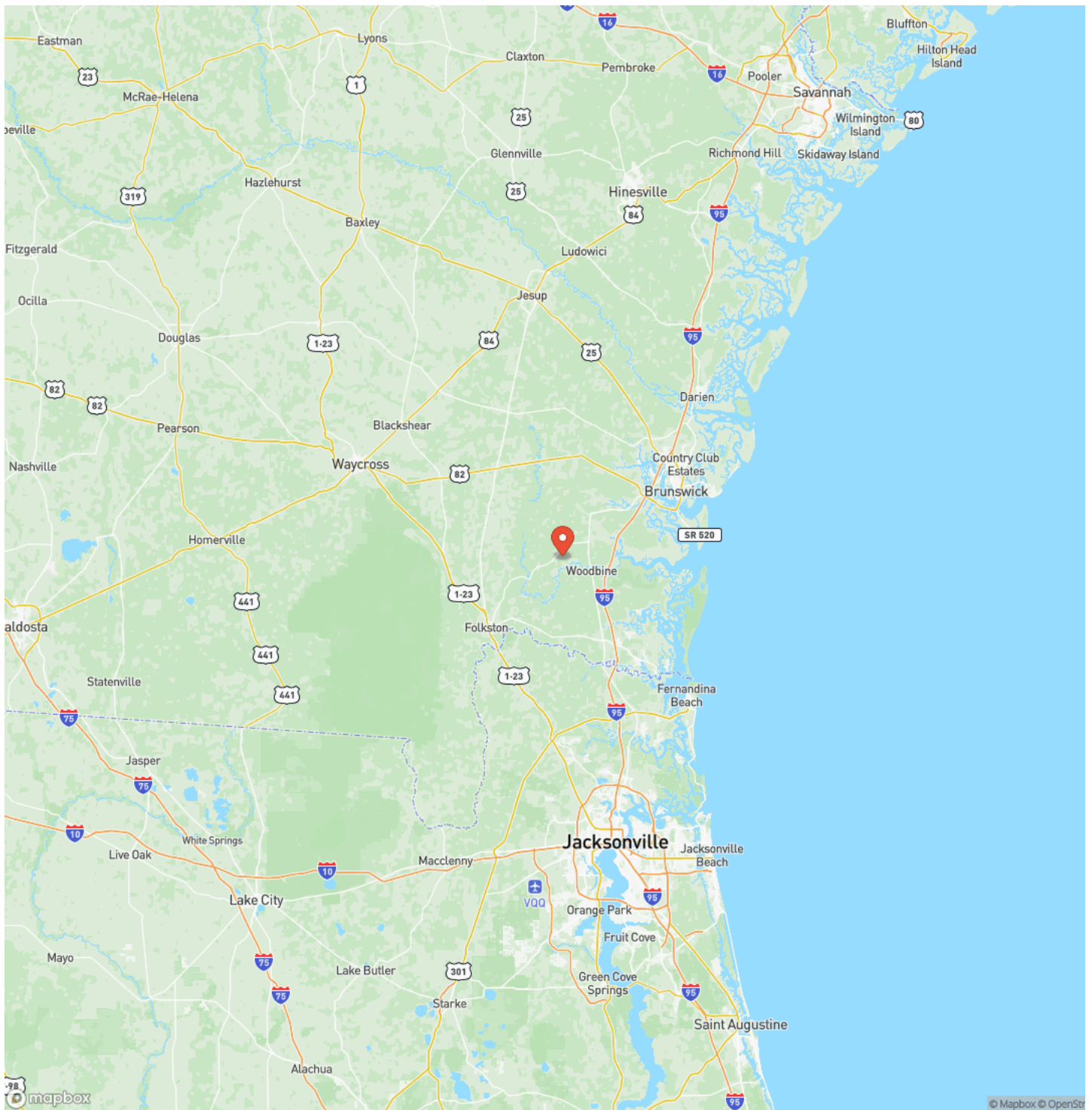
25.10 +/- Ac Land for Sale in Camden County, GA
White Oak, GA / Camden County



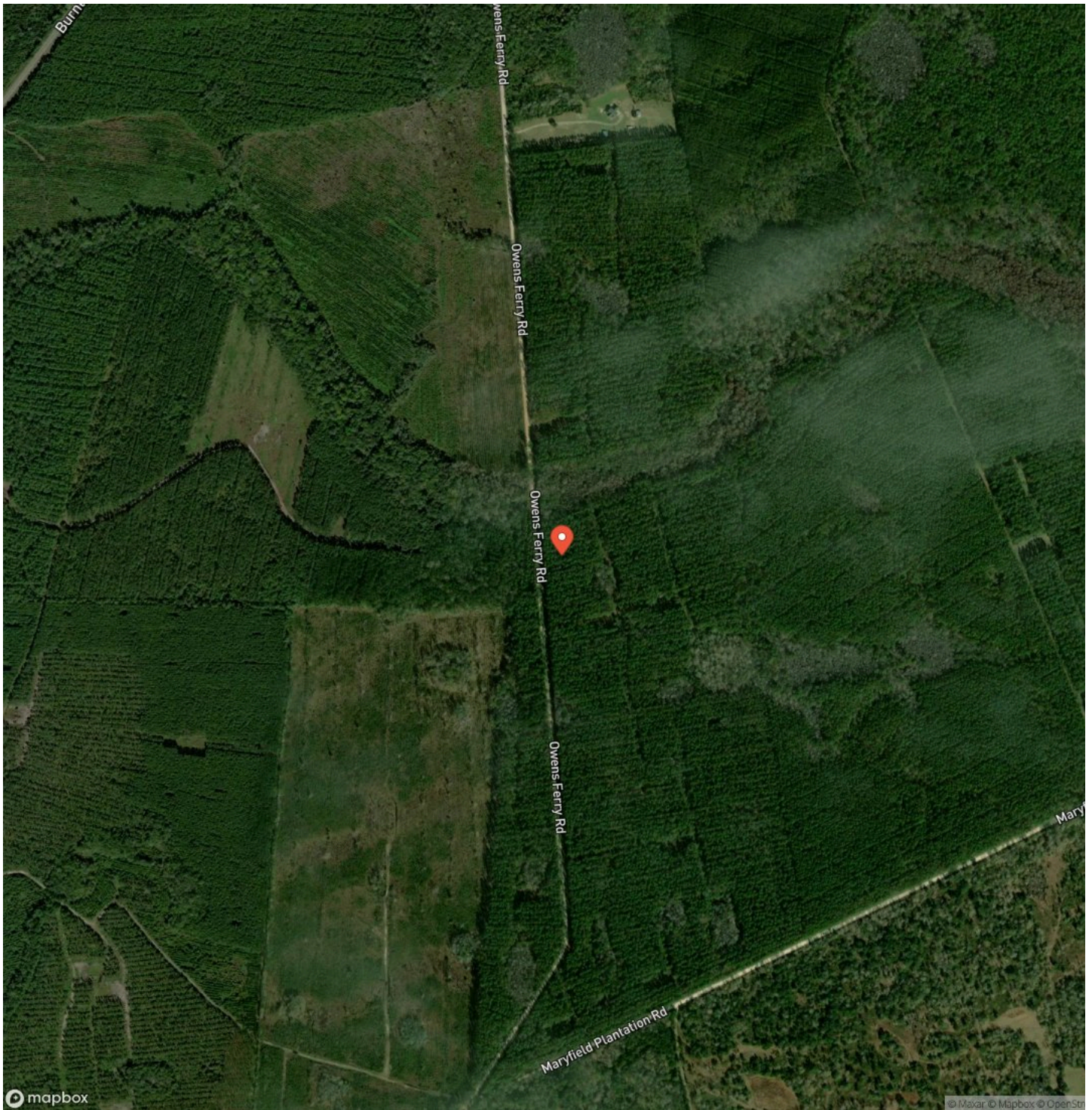
Locator Map



Locator Map



Satellite Map



DISCLAIMERS

Information in this brochure is provided solely for information purposes and does not constitute an offer to sell or advertise real estate outside the states in which broker or agent licensed. The information presented has been obtained from sources deemed to be reliable, but is not guaranteed or warranted by the agent, broker, or the sellers of these properties. This offering is subject to errors, omissions, prior sale, price change, correction or withdrawal from the market without notice. All references to age, square footage, income, expenses, acreage, carrying capacity, and land classification, etc. are approximate. Prospective buyers are chargeable with and expected to conduct their own independent investigation of the information and the property and to rely only on those results. Sellers reserve the right to accept or reject any and all offers without liability to any buyer or cooperating broker.

Maps are provided for illustration purposes only, the accuracy is not warranted. Parcels on interactive maps are not adjusted to match aerial backgrounds. This information is for reference purposes only and is not a legal document. Data maps contain errors. The seller and seller's agent are making known to all potential buyers that there may be variations between the location of the existing fence lines and the legal description of the deeded property. Seller and seller's agent make no warranties with regard to the location of the fence lines in relationship to the deeded property lines, nor does the Seller make any warranties or representations with regard to the specific acreage contained within the fenced property lines. Seller is selling the property in an "as is" condition, which includes the location of the fences as they exist. Boundaries shown on the accompanying maps are approximate, based on county parcel data. The maps are not to scale. The accuracy of the maps is not guaranteed. Prospective buyers are encouraged to verify fence lines, deeded property lines and acreages using a licensed surveyor at their own expense.

Mossy Oak Properties Coastal Land and Real Estate
309 Arnow Court
Saint Marys, GA 31558
(912) 674-2700
MossyOakProperties.com

