

3 +/- Ac Land for Sale in Camden County, GA
0 Josephs Way
Kingsland, GA 31548

\$72,500
3± Acres
Camden County



**3 +/- Ac Land for Sale in Camden County, GA
Kingsland, GA / Camden County**

SUMMARY

Address

0 Josephs Way

City, State Zip

Kingsland, GA 31548

County

Camden County

Type

Undeveloped Land

Latitude / Longitude

30.782067 / -81.716514

Acreage

3

Price

\$72,500

Property Website

<https://www.mossoakproperties.com/property/3-ac-land-for-sale-in-camden-county-ga-camden-georgia/105564/>



3 +/- Ac Land for Sale in Camden County, GA Kingsland, GA / Camden County

PROPERTY DESCRIPTION

Description

Homesite - 3 +/- Acres in Camden County, GA

This 3 +/- acre tract located on Josephs Way in Camden County, GA offers an excellent opportunity for a homesite in a quiet rural setting with convenient access to nearby towns and major highways. With no restrictions, the property provides the flexibility to build your dream home, create a private getaway, or hold as an investment in one of Southeast Georgia's growing areas.

Enjoy the balance of peaceful country living while still being just minutes from Kingsland, I-95, and the Florida state line.

Property Features:

- 3 +/- Acres in Camden County, GA
- Located on Josephs Way
- No Restrictions
- Excellent Homesite Opportunity
- Convenient Access to I-95

Location:

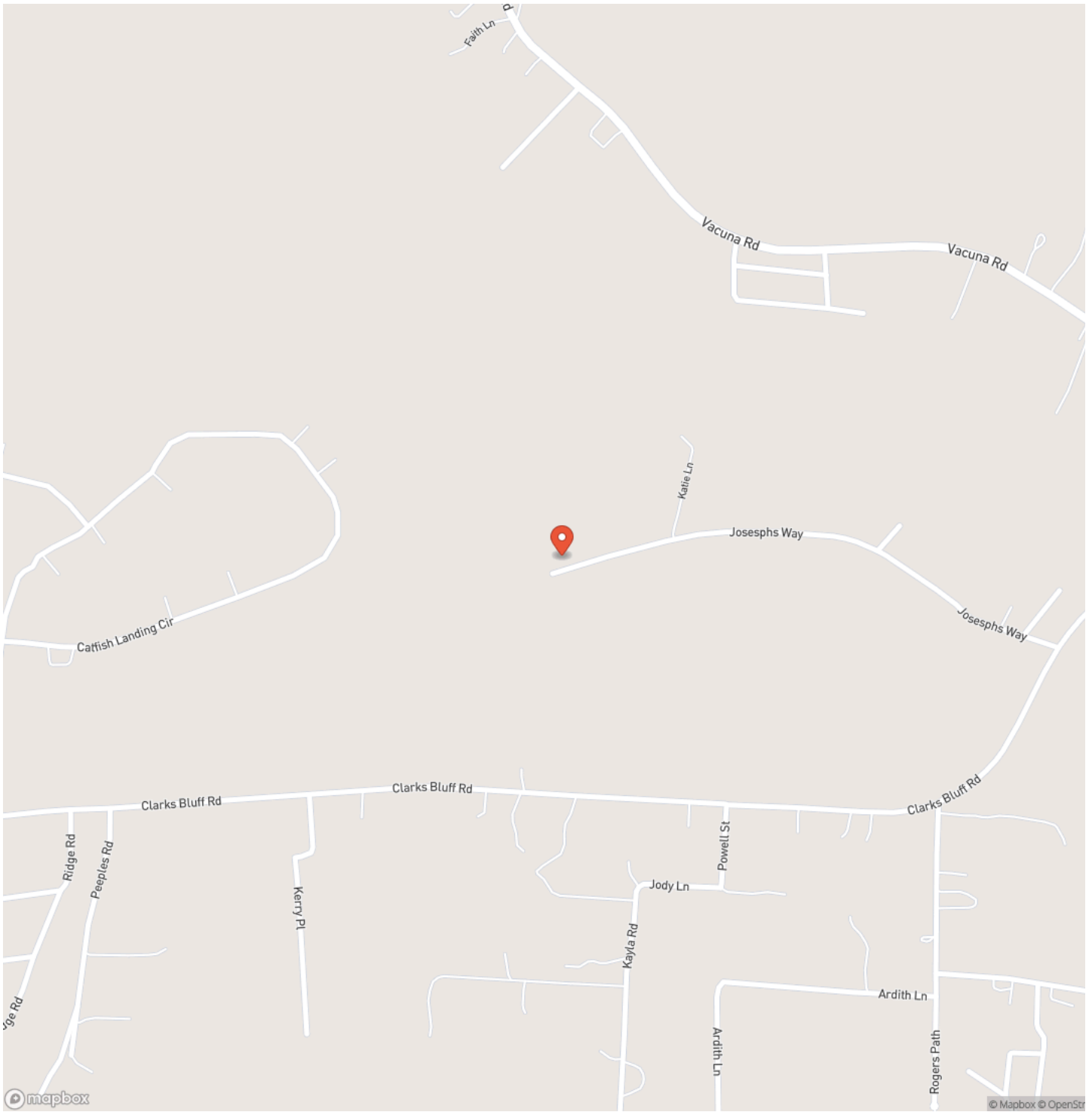
- 6 Minutes to Kingsland
- 16 Minutes to St. Marys
- 10 Minutes to I-95
- 17 Minutes to Kings Bay Naval Base
- 26 Minutes to Folkston
- 36 Minutes to Jacksonville
- 42 Minutes to Brunswick

Contact Brogan Napier (Cell: [904-814-9737](tel:904-814-9737)) with Mossy Oak Properties for more information on this property or others like it.

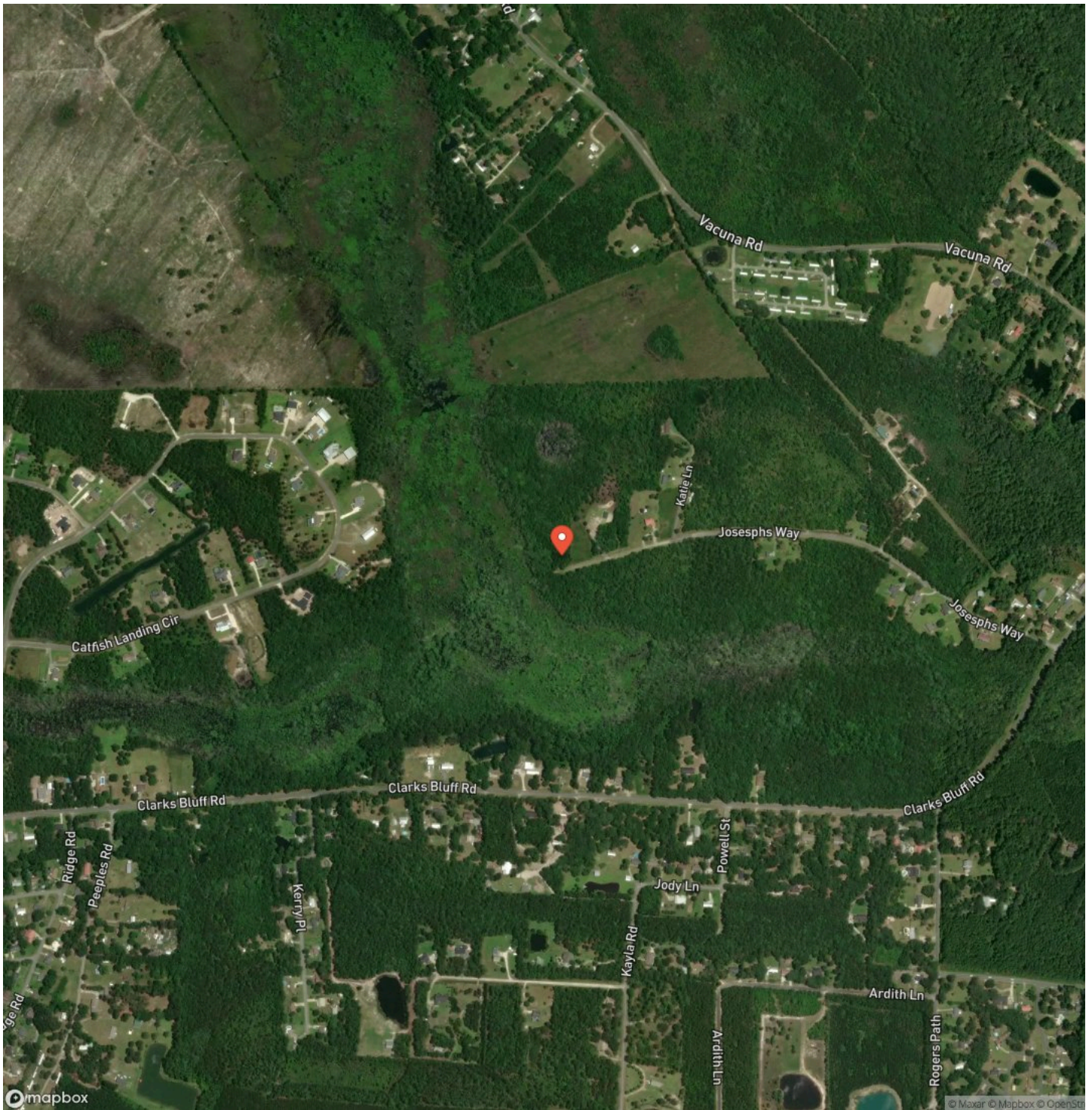
3 +/- Ac Land for Sale in Camden County, GA
Kingsland, GA / Camden County



Locator Map



Satellite Map



DISCLAIMERS

Information in this brochure is provided solely for information purposes and does not constitute an offer to sell or advertise real estate outside the states in which broker or agent licensed. The information presented has been obtained from sources deemed to be reliable, but is not guaranteed or warranted by the agent, broker, or the sellers of these properties. This offering is subject to errors, omissions, prior sale, price change, correction or withdrawal from the market without notice. All references to age, square footage, income, expenses, acreage, carrying capacity, and land classification, etc. are approximate. Prospective buyers are chargeable with and expected to conduct their own independent investigation of the information and the property and to rely only on those results. Sellers reserve the right to accept or reject any and all offers without liability to any buyer or cooperating broker.

Maps are provided for illustration purposes only, the accuracy is not warranted. Parcels on interactive maps are not adjusted to match aerial backgrounds. This information is for reference purposes only and is not a legal document. Data maps contain errors. The seller and seller's agent are making known to all potential buyers that there may be variations between the location of the existing fence lines and the legal description of the deeded property. Seller and seller's agent make no warranties with regard to the location of the fence lines in relationship to the deeded property lines, nor does the Seller make any warranties or representations with regard to the specific acreage contained within the fenced property lines. Seller is selling the property in an "as is" condition, which includes the location of the fences as they exist. Boundaries shown on the accompanying maps are approximate, based on county parcel data. The maps are not to scale. The accuracy of the maps is not guaranteed. Prospective buyers are encouraged to verify fence lines, deeded property lines and acreages using a licensed surveyor at their own expense.

Mossy Oak Properties Coastal Land and Real Estate
309 Arnow Court
Saint Marys, GA 31558
(912) 674-2700
<https://mossyoakproperties.com/>

